

DEC 08 '87

APPLICATION FOR PERMIT TO DRILL, DEEPEN, OR PLUG BACK. C. D.

23.

CONDITIONS OF APPROVAL, IF ANY:

DEC 9 1987

**NEW MEXICO OIL CONSERVATION COMMISSION
WELL LOCATION AND ACREAGE DEDICATION PLAT**

Form C-102
Supersedes C-128
Effective 1-1-65

All distances must be from the outer boundaries of the Section.

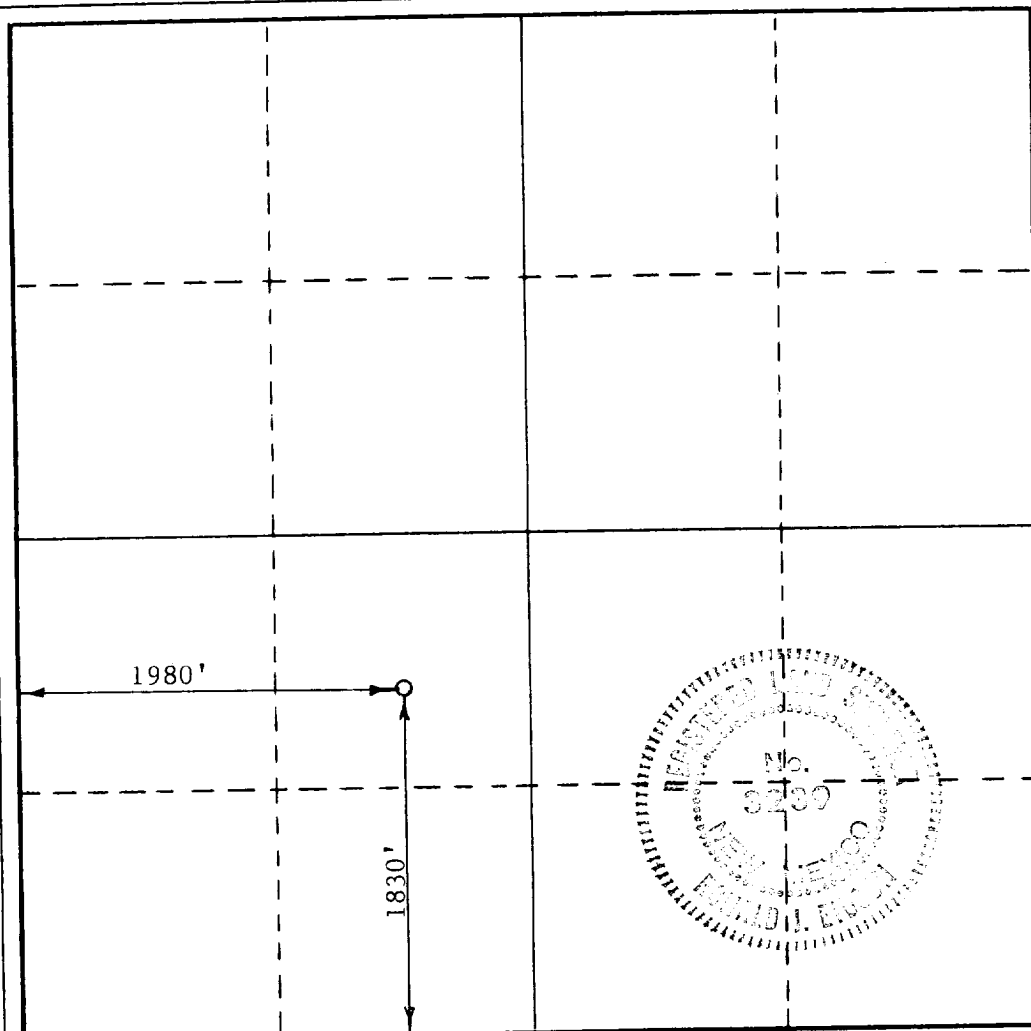
Operator Reading & Bates Petroleum Company			Lease South Culebra Bluff 23		Well No. 1
Unit Letter K	Section 23	Township 23 South	Range 28 East	County Eddy	
Actual Footage Location of Well: <div style="display: flex; justify-content: space-between;"> 1830 feet from the South line and 1980 feet from the West line </div>					
Ground Level Elev. 2999.3	Producing Formation Bone Spring	Pool South Culebra Bluff (Bone Spring)		Dedicated Acreage: 80 Acres	

1. Outline the acreage dedicated to the subject well by colored pencil or hachure marks on the plat below.
2. If more than one lease is dedicated to the well, outline each and identify the ownership thereof (both as to working interest and royalty).
3. If more than one lease of different ownership is dedicated to the well, have the interests of all owners been consolidated by communitization, unitization, force-pooling, etc?

☐ Yes ☐ No If answer is "yes," type of consolidation _____

If answer is "no," list the owners and tract descriptions which have actually been consolidated. (Use reverse side of this form if necessary.) _____

No allowable will be assigned to the well until all interests have been consolidated (by communitization, unitization, forced-pooling, or otherwise) or until a non-standard unit, eliminating such interests, has been approved by the Commission.



CERTIFICATION

I hereby certify that the information contained herein is true and complete to the best of my knowledge and belief.

Name *Ronald J. Eidson*
 Position _____
 Production Supt. _____
 Company
Reading & Bates Petr. Corp.
 Date
December 3, 1987

I hereby certify that the well location shown on this plat was plotted from field notes of actual surveys made by me or under my supervision, and that the same is true and correct to the best of my knowledge and belief.

Date Surveyed
December 3, 1987
 Registered Professional Engineer
 and/or Land Surveyor
Ronald J. Eidson
 Certificate No. JOHN W. WEST, 676
RONALD J. EIDSON, 3239

BOP STACK

