

NEW MEXICO OIL CONSERVATION COMMISSION  
WELL LOCATION AND ACREAGE DEDICATION PLAT

Form C-102  
Supersedes C-128  
Effective 1-1-65

All distances must be from the outer boundaries of the Section

|   |                               |  |                                 |               |
|---|-------------------------------|--|---------------------------------|---------------|
| Operator<br>Santa Fe Operating Partners, L.P. |                               | Lease<br>Sterling Silver 32                  |                                 | Well No.<br>1 |
| Section<br>32                                 | Township<br>23 South          | Range<br>31 East                             | County<br>Eddy                  |               |
| Actual Well Location of Well:                 |                               |  |                                 |               |
| 1980 feet from the South line and             |                               | 1980 feet from the East line                 |                                 |               |
| Ground Level Elev.<br>3370.5                  | Producing Formation<br>Morrow | Pool<br>Undes. West Sand Dunes <i>MORROW</i> | Dedicated Acreage:<br>320 Acres |               |

1. Outline the acreage dedicated to the subject well by colored pencil or hachure marks on the plat below.
2. If more than one lease is dedicated to the well, outline each and identify the ownership thereof (both as to working interest and royalty).
3. If more than one lease of different ownership is dedicated to the well, have the interests of all owners been consolidated by communitization, unitization, force-pooling, etc?

☐ Yes ☒ No If answer is "yes," type of consolidation \_\_\_\_\_

If answer is "no," list the owners and tract descriptions which have actually been consolidated. (Use reverse side of this form if necessary.) One lease - see reverse side

No allowable will be assigned to the well until all interests have been consolidated (by communitization, unitization, forced-pooling, or otherwise) or until a non-standard unit, eliminating such interests, has been approved by the Commission.

State of New Mexico Lease No. LG-8478  
Santa Fe Energy Operating Partners, L.P. - 100% W.I.  
State of New Mexico - 12.5% Royalty



CERTIFICATION

I hereby certify that the information contained herein is true and complete to the best of my knowledge and belief.

Name  
*Michael R. Burton*  
Position  
*District Drilling Engineer*  
Company  
*Santa Fe Energy Operating Partners, L.P.*  
Date  
1-20-88

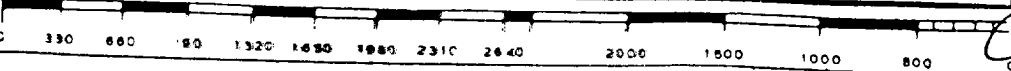
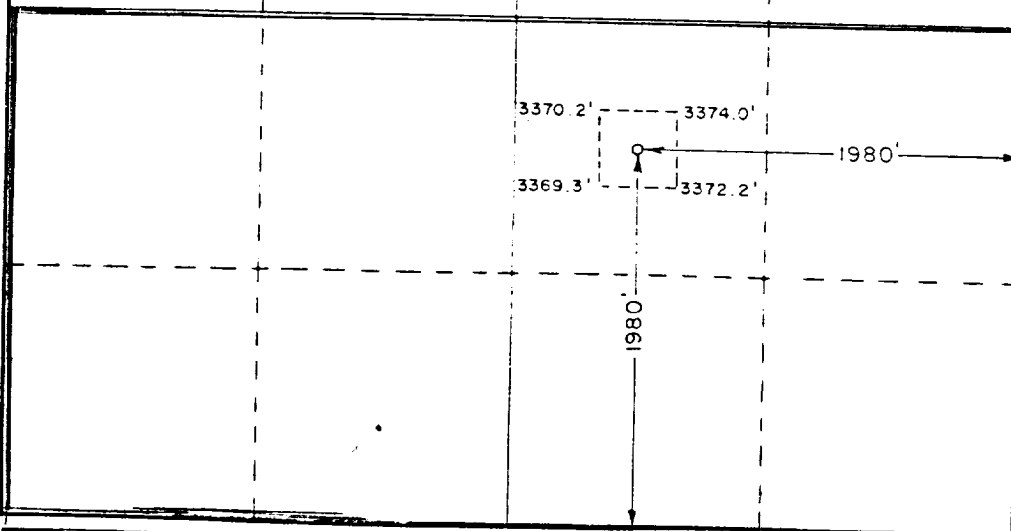
I hereby certify that the well location shown on this plat was plotted from field notes of actual surveys made by me or under my supervision, and that the same is true and correct to the best of my knowledge and belief.

Date Surveyed  
January 13, 1988

Registered Professional Engineer  
and/or Land Surveyor

*John W. West*

Certificate No. JOHN W. WEST, 676  
RONALD J. EIDSON 3219



T-23-S, R-31-E, Eddy County, New Mexico  
Section 32: S/2

WI  
Santa Fe Energy Operating Partners, L.P. - 100%

Royalty  
State of New Mexico - 12.5%