

NEW MEXICO OIL CONSERVATION COMMISSION
WELL LOCATION AND ACREAGE DEDICATION PLAT

Form C-102
Supersedes C-128
Effective 1-1-65

All distances must be from the outer boundaries of the Section

Operator Santa Fe Operating Partners, L.P.		Lease Sterling Silver 32		Well No. 1
Tract Letter J	Section 32	Township 13 South	Range 31 East	County Eddy
Actual Well Location of Well: 1980 feet from the South line and 1980 feet from the East line				
Ground Level Elev. 3370.5	Producing Formation Morrow	Pool Undes. West Sand Dunes	Dedicated Acreage: 320 Acres	

1. Outline the acreage dedicated to the subject well by colored pencil or hachure marks on the plat below.
2. If more than one lease is dedicated to the well, outline each and identify the ownership thereof (both as to working interest and royalty).
3. If more than one lease of different ownership is dedicated to the well, have the interests of all owners been consolidated by communitization, unitization, force-pooling, etc?

☐ Yes ☒ No If answer is "yes," type of consolidation _____

If answer is "no," list the owners and tract descriptions which have actually been consolidated. (Use reverse side of this form if necessary.) One lease - see reverse side

No allowable will be assigned to the well until all interests have been consolidated (by communitization, unitization, forced-pooling, or otherwise) or until a non-standard unit, eliminating such interests, has been approved by the Commission.

State of New Mexico Lease No. LG-8478
Santa Fe Energy Operating Partners, L.P. - 100% W.I.
State of New Mexico - 12.5% Royalty



CERTIFICATION

I hereby certify that the information contained herein is true and complete to the best of my knowledge and belief.

Name
Michael R. Bunker
Position
District Drilling Engineer
Company
Santa Fe Energy Operating Partners, L.P.
Date
1-20-88

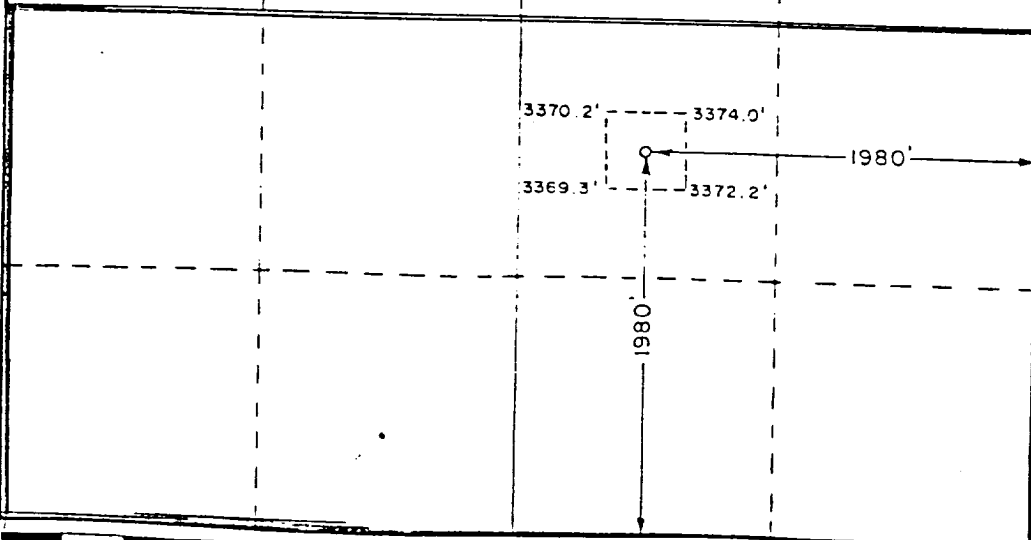
I hereby certify that the well location shown on this plat was plotted from field notes of actual surveys made by me or under my supervision, and that the same is true and correct to the best of my knowledge and belief.

Date Surveyed
January 13, 1988

Registered Professional Engineer
and/or Land Surveyor

John W. West

Certificate No. JOHN W. WEST, 676
RONALD J. EIDSON, 3239



96560