

NEW MEXICO OIL CONSERVATION COMMISSION  
WELL LOCATION AND ACREAGE DEDICATION PLAT

Form C-102  
Supersedes C-128  
Effective 1-1-65

All distances must be from the outer boundaries of the Section.

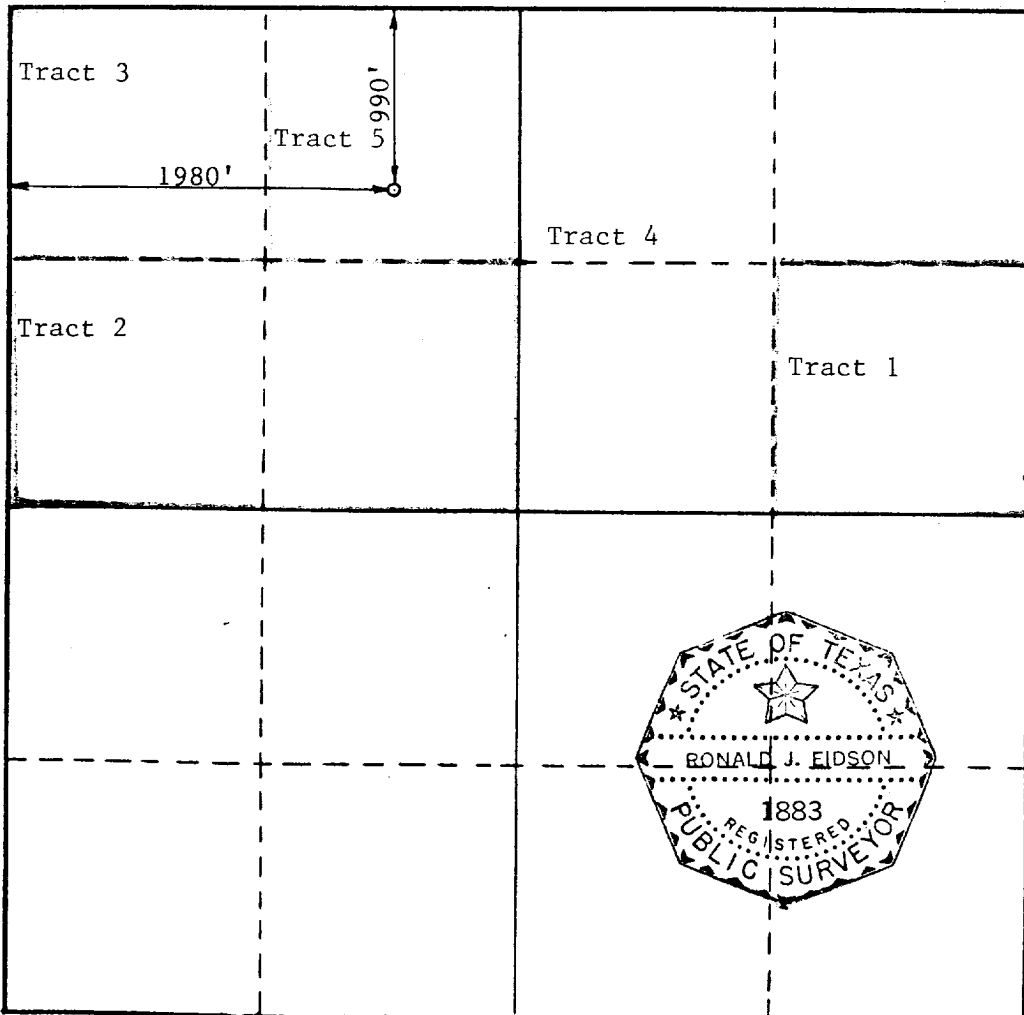
Operator SANTA FE ENERGY OPERATING PARTNERS LP			Lease MULE FOOT 5-STATE COM.		Well No. #1
Unit Letter C	Section 5	Township 24-SOUTH	Range 25-EAST	County EDDY	
Actual Footage Location of Well: 990 feet from the NORTH line and 1980 feet from the WEST line					
Ground Level Elev. 3811'	Producing Formation Morrow	Pool Undes. Baldrige Canyon		Dedicated Acreage: 319.62 Acres	

1. Outline the acreage dedicated to the subject well by colored pencil or hachure marks on the plat below.
2. If more than one lease is dedicated to the well, outline each and identify the ownership thereof (both as to working interest and royalty).
3. If more than one lease of different ownership is dedicated to the well, have the interests of all owners been consolidated by communitization, unitization, force-pooling, etc?

☒ Yes ☐ No If answer is "yes," type of consolidation Communitization Agreement

If answer is "no," list the owners and tract descriptions which have actually been consolidated. (Use reverse side of this form if necessary.)

No allowable will be assigned to the well until all interests have been consolidated (by communitization, unitization, forced-pooling, or otherwise) or until a non-standard unit, eliminating such interests, has been approved by the Commission.



CERTIFICATION

I hereby certify that the information contained herein is true and complete to the best of my knowledge and belief.

Name  
Michael R. Bunker  
Position  
District Drilling Eng.  
Company  
SANTA FE ENERGY OPERATING PARTNERS, L.P.  
Date  
12/9/88

I hereby certify that the well location shown on this plat was plotted from field notes of actual surveys made by me or under my supervision, and that the same is true and correct to the best of my knowledge and belief.

DECEMBER 7, 1988

Date Surveyed  
Ronald J. Eidson  
Registered Professional Engineer  
and/or Land Surveyor

Certificate No. JOHN W. WEST, 676  
RONALD J. EIDSON, 3239

Ownership:

Tract 1 - O'Brien Goins Simpson Exploration Company	- 100% Working Interest
Michael W. Gates	- 1.625% Overriding Royalty Interest
John H. White, et al	- 18.75% Royalty Interest
Tract 2 - O'Brien Goins Simpson Exploration Company	- 100% Working Interest
Michael W. Gates	- 1.625% Overriding Royalty Interest
State of New Mexico	- 16.6667% Royalty Interest
Tract 3 - Santa Fe Energy Operating Partners. L.P.	- 100% Working Interest
State of New Mexico	- 16.6667% Royalty Interest
Tract 4 - Yates Petroleum Corporation	- 100% Working Interest
State of New Mexico	- 16.6667% Royalty Interest
Tract 5 - Amoco Production Company	- 100% Working Interest
State of New Mexico	- 16.6667% Royalty Interest