

Submit to Appropriate  
District Office  
State Lease - 6 copies  
Fee Lease - 5 copies

State of New Mexico  
Energy, Minerals and Natural Resources Department

Form C-101  
Revised 1-1-89

OIL CONSERVATION DIVISION

P.O. Box 2088  
Santa Fe, New Mexico 87504-2088  
MAR 29 1989

DISTRICT I  
P.O. Box 1980, Hobbs, NM 88240

DISTRICT II  
P.O. Drawer DD, Artesia, NM 88210

DISTRICT III  
1000 Rio Brazos Rd., Aztec, NM 87410

API NO. (assigned by OCD on New Wells)

30-015-26122

5. Indicate Type of Lease

STATE ☐

FEE ☒

6. State Oil & Gas Lease No.

7. Lease Name or Unit Agreement Name

Pardue Farms 27

8. Well No.

8-~~1~~

9. Pool name or Wildcat

Delaware (Bell Canyon)

APPLICATION FOR PERMIT TO DRILL, DEEPEN, OR PLUG BACK

1a. Type of Work:

DRILL ☒

RE-ENTER ☐

DEEPEN ☐

PLUG BACK ☐

b. Type of Well:

OIL  
WELL ☐

GAS  
WELL ☐

OTHER ☐

SWD

SINGLE  
ZONE ☒

MULTIPLE  
ZONE ☐

2. Name of Operator

Parker & Parsley Petroleum Company

3. Address of Operator

P. O. Box 3178, Midland, Texas 79702

4. Well Location

Unit Letter H : 2069 Feet From The North Line and 632 Feet From The East Line

Section 27 Township 23S Range 28E NMPM Eddy County

10. Proposed Depth

4800

11. Formation

Bell Canyon

12. Rotary or C.T.

Rotary

13. Elevations (Show whether DF, RT, GR, etc.)

3033.1 GR

14. Kind & Status Plug. Bond

Blanket-Active

15. Drilling Contractor

Capstarr

16. Approx. Date Work will start

4-1-89

17. PROPOSED CASING AND CEMENT PROGRAM

SIZE OF HOLE	SIZE OF CASING	WEIGHT PER FOOT	SETTING DEPTH	SACKS OF CEMENT	EST. TOP
12 1/4 17 1/2	9 5/8 13 3/8	36 1/2 # 88.2	500'	500	Surf.
8 3/4 9 7/8	7"	24 29 # 32	4800' 4850	800 1500 s.k.	Surf.

BOP's - 500-4800'

10" 3000 psi double ram preventers, nearest resistance  
approximately 400'.

APPROVAL VALID FOR 180 DAYS  
PERMIT EXPIRES 11/16/89  
UNLESS DRILLING UNDERWAY

IN ABOVE SPACE DESCRIBE PROPOSED PROGRAM: IF PROPOSAL IS TO DEEPEN OR PLUG BACK, GIVE DATA ON PRESENT PRODUCTIVE ZONE AND PROPOSED NEW PRODUCTIVE ZONE. GIVE BLOWOUT PREVENTER PROGRAM, IF ANY.

I hereby certify that the information above is true and complete to the best of my knowledge and belief.

SIGNATURE Randy B. Johnson TITLE Operations Engineer DATE 3-27-89

TYPE OR PRINT NAME Randy Johnson TELEPHONE NO. 915 683 4768

(This space for State Use)

Original Signed By  
Mike Williams

APPROVED BY DATE

CONDITIONS OF APPROVAL, IF ANY:

Jointly with O.C.C. in sufficient

time to witness cementing

the 13 3/8" casing

MAY 19 1989

SWD R-8930  
APPC 5-10-89

Submit to Appropriate  
District Office  
State Lease - 4 copies  
Fee Lease - 3 copies

State of New Mexico  
Energy, Minerals and Natural Resources Department

Form C-102  
Revised 1-1-89

OIL CONSERVATION DIVISION

P.O. Box 2088  
Santa Fe, New Mexico 87504-2088

DISTRICT I  
P.O. Box 1980, Hobbs, NM 88240

DISTRICT II  
P.O. Drawer DD, Artesia, NM 88210

DISTRICT III  
1000 Rio Brazos Rd., Aztec, NM 87410

WELL LOCATION AND ACREAGE DEDICATION PLAT

All Distances must be from the outer boundaries of the section

Operator Parker & Parsley			Lease Pardue Farms 27		Well No. 8-D
Unit Letter H	Section 27	Township 23 South	Range 28 East	County Eddy	
Actual Footage Location of Well: 2069 feet from the north line and 632 feet from the east line					
Ground level Elev. 3033.1		Producing Formation Bell Canyon	Pool UDD, Delaware (Bell Canyon)	Dedicated Acreage: 40 Acres	

1. Outline the acreage dedicated to the subject well by colored pencil or hatchure marks on the plat below.

2. If more than one lease is dedicated to the well, outline each and identify the ownership thereof (both as to working interest and royalty).

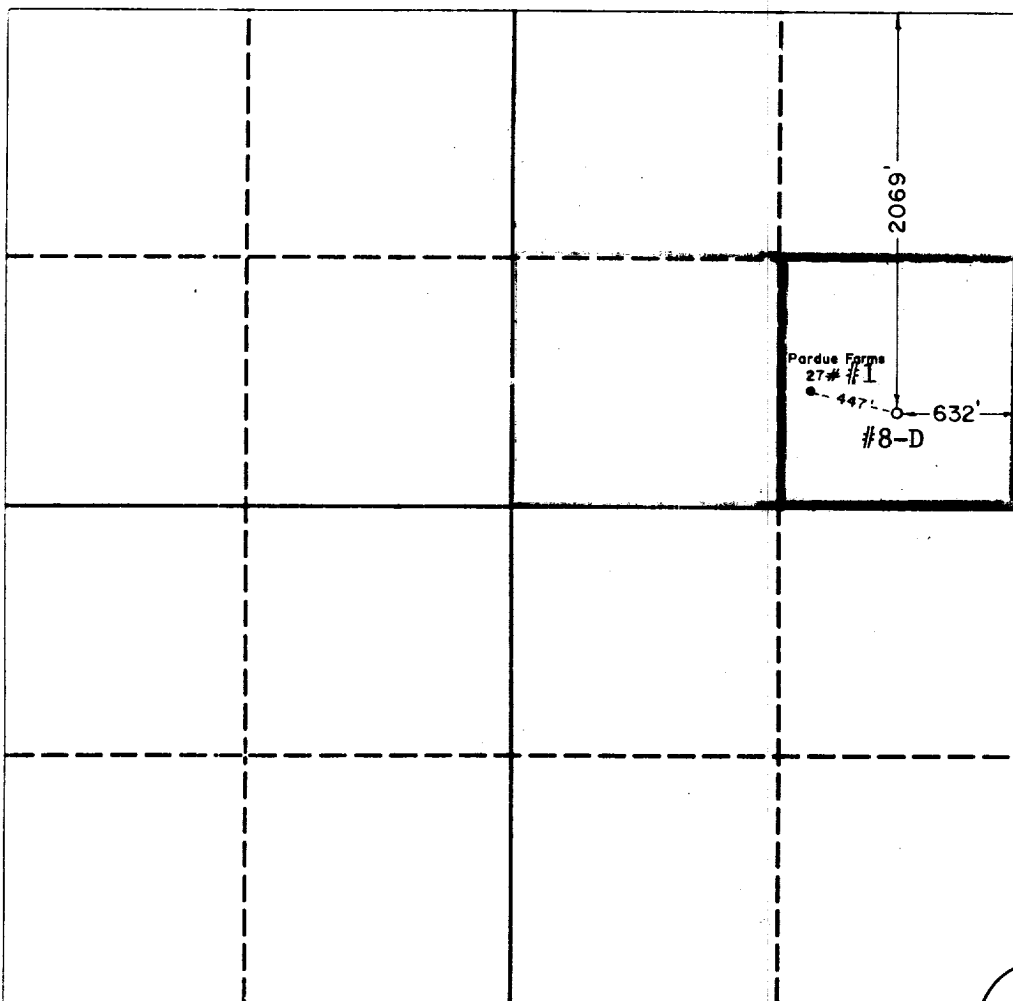
3. If more than one lease of different ownership is dedicated to the well, have the interest of all owners been consolidated by communitization, unitization, force-pooling, etc.?

☒ Yes ☐ No

If answer is "yes" type of consolidation Designation of pooled or unitized area

If answer is "no" list the owners and tract descriptions which have actually been consolidated. (Use reverse side of this form if necessary.)

No allowable will be assigned to the well until all interests have been consolidated (by communitization, unitization, forced-pooling, or otherwise) or until a non-standard unit, eliminating such interest, has been approved by the Division.



OPERATOR CERTIFICATION

I hereby certify that the information contained herein is true and complete to the best of my knowledge and belief.

*Randy P. Johnson*  
Signature

Randy Johnson

Printed Name

Operations Engineer

Position

Parker & Parsley Petr. Co.  
Company

3-27-89

Date

SURVEYOR CERTIFICATION

I hereby certify that the well location shown on this plat was plotted from field notes of actual surveys made by me or under my supervision, and that the same is true and correct to the best of my knowledge and belief.

Date Surveyed

March 21, 1989

Signature & Seal of  
Professional Surveyor

*[Signature]*  
REGISTERED PROFESSIONAL LAND SURVEYOR  
NEW MEXICO  
JOHN W. WEST  
Certificate No. 676  
676  
3239



RECEIVED

MAR 30 '89

O. C. D.  
ARTESIA, OFFICE

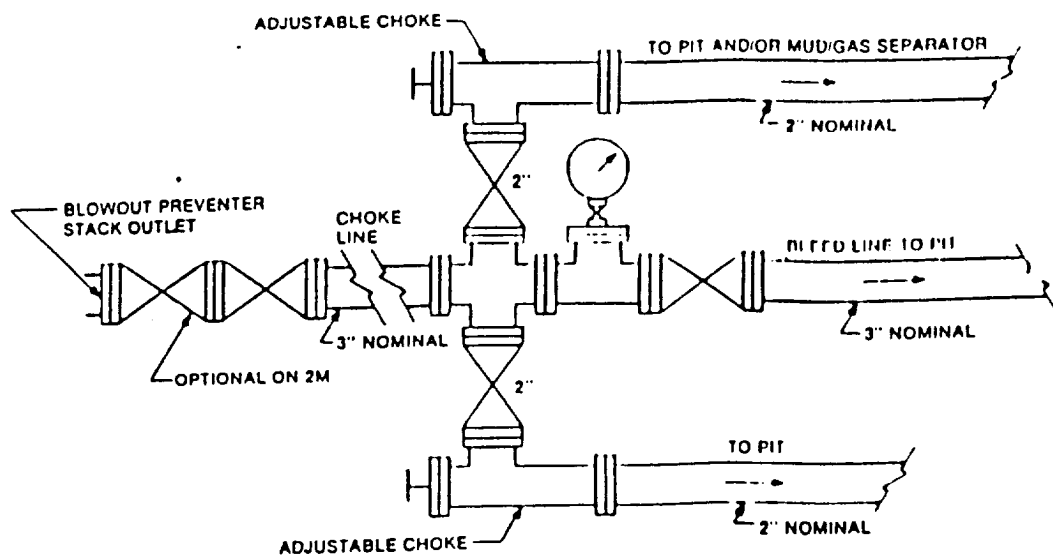


FIGURE K4-1. Typical choke manifold assembly for 3M rated working pressure service — surface installation.

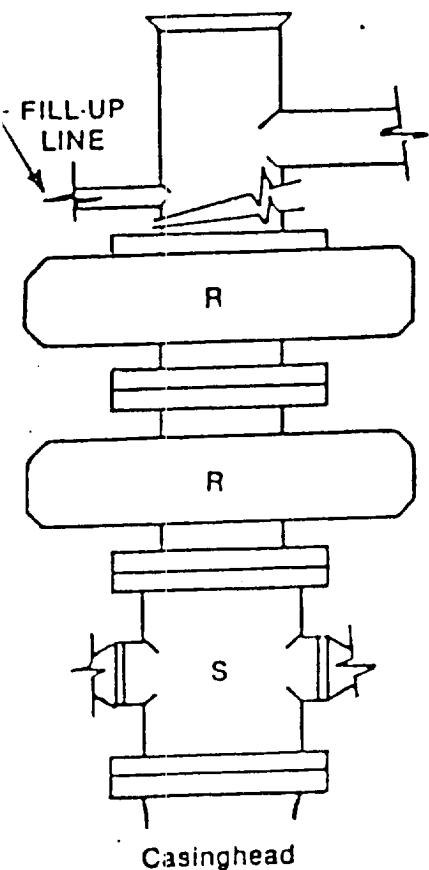


FIGURE K1-1. Recommended IADC Class 2 BOP stack; 3000 psi WP. Either SRd (left) or SA (right) arrangement is acceptable and drilling spool is optional.