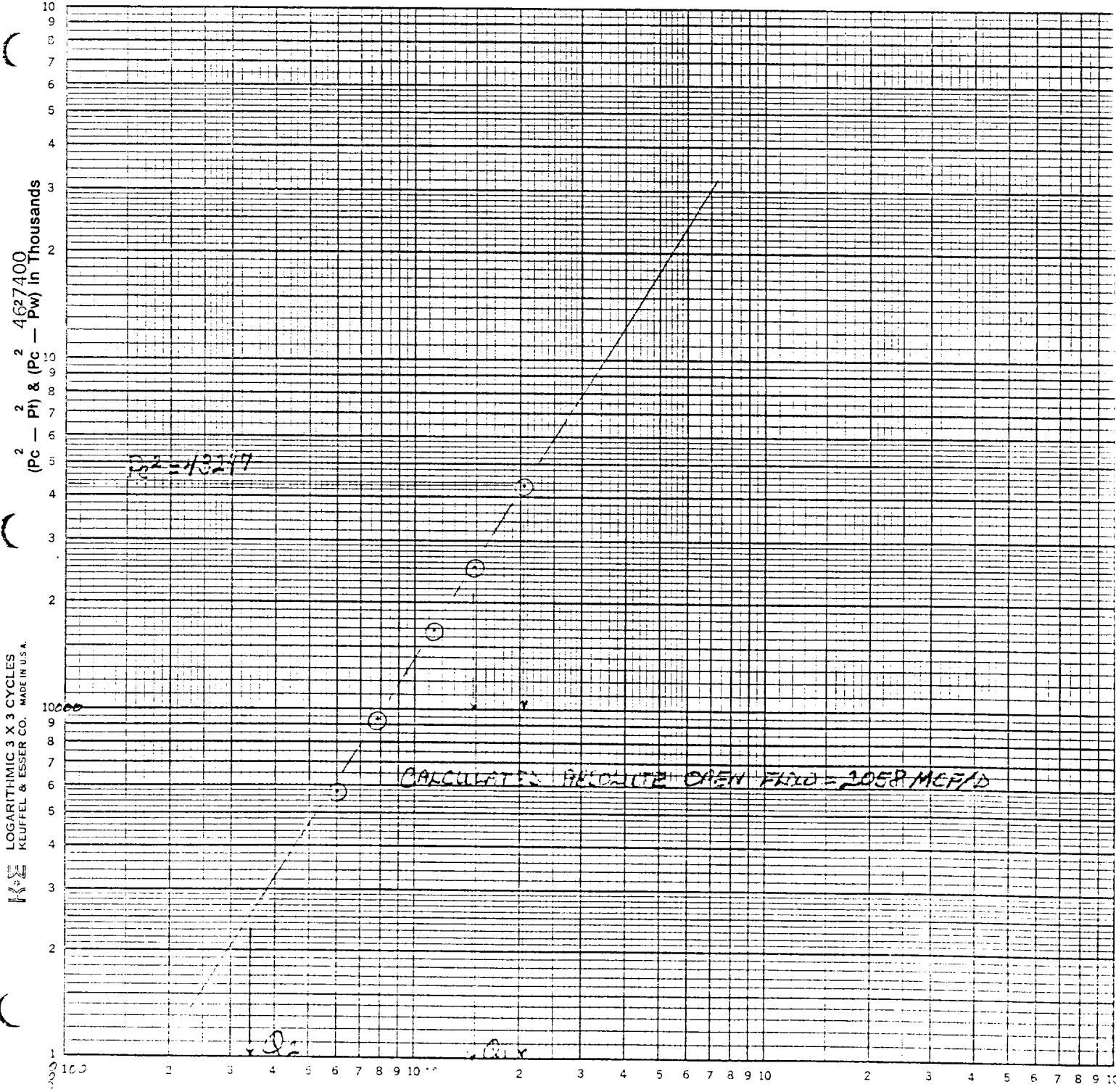


C & W WIRELINE, INC. d/b/a BENNETT-CATF WELL TESTING
BACK PRESSURE CURVE

Operator SANTA FE ENERGY Lease SALT DRAW 2P Well No. 1
 County EDDY Field UNLEIGH-2D Location 28-24S-28E
 Date of Test 1-8-70 Slope "n" .637 Angle of Slope 57.5°
 Calc. Abs. Potential 2052 MCF/D



$\overline{\Delta P}_1^2 \quad P_c^2 - P_w^2 = 25000$
 $\overline{\Delta P}_2^2 \quad P_c^2 - P_w^2 = 2500$
 $Q_1 = 1472$
 $Q_2 = 340$

Q, Mcfd

LOG $Q_1 = 3.167$
 LOG $Q_2 = 2.531$
 $n = 0.637$