

Submit to Appropriate
District Office
State Lease - 6 copies
Fee Lease - 5 copies

State of New Mexico
Energy, Minerals and Natural Resources Department

State Fee	
BLM	
Land Office	
BoM	
Operator	

Form C-101
Revised 1-1-89

DISTRICT I
P.O. Box 1980, Hobbs, NM 88240

DISTRICT II
P.O. Drawer DD, Artesia, NM 88210

DISTRICT III
1000 Rio Brazos Rd., Aztec, NM 87410

OIL CONSERVATION DIVISION
P.O. Box 2088
Santa Fe, New Mexico 87504-2088

JUL 17 '89

O. C. D.

API NO. (assigned by OCD on New Wells)

30-05-26151

5. Indicate Type of Lease

STATE ☐

FEE ☒

6. State Oil & Gas Lease No.

7. Lease Name or Unit Agreement Name

RGA

8. Well No.

1

9. Pool name or Wildcat

Undesignated

APPLICATION FOR PERMIT TO DRILL, DEEPEN, OR PLUG BACK

1a. Type of Work:

DRILL ☒

RE-ENTER ☐

DEEPEN ☐

PLUG BACK ☐

b. Type of Well:

OIL WELL ☒

GAS WELL ☐

OTHER ☐

SINGLE ZONE ☒

MULTIPLE ZONE ☐

2. Name of Operator

Bird Creek Resources, Inc. ✓

3. Address of Operator

1412 S. Boston, Ste. 550, Tulsa, Ok. 74119

4. Well Location

Unit Letter K : 2080 Feet From The South Line and 2180 Feet From The West Line

Section 14 Township 23S Range 28E NMPM Eddy County

10. Proposed Depth

6250'

11. Formation

Delaware

12. Rotary or C.T.

Rotary

13. Elevations (Show whether DF, RT, GR, etc.)

3003.2' GR

14. Kind & Status Plug Bond

Blanket

15. Drilling Contractor

Rod Ric Corp.

16. Approx. Date Work will start

July 20, 1989

17.

PROPOSED CASING AND CEMENT PROGRAM

SIZE OF HOLE	SIZE OF CASING	WEIGHT PER FOOT	SETTING DEPTH	SACKS OF CEMENT	EST. TOP
11"	8 5/8"	24#	500'	550	Surface
7 7/8"	5 1/2"	15#	6250'	2500	450'

Cement to be circulated to surface using DV tool at 3100'.

POSTED-1
NL & API
7-21-89

APPROVAL VALID FOR 180 DAYS
PERMIT EXPIRES 1-18-90
UNLESS DRILLING UNDERWAY

IN ABOVE SPACE DESCRIBE PROPOSED PROGRAM: IF PROPOSAL IS TO DEEPEN OR PLUG BACK, GIVE DATA ON PRESENT PRODUCTIVE ZONE AND PROPOSED NEW PRODUCTIVE ZONE. GIVE BLOWOUT PREVENTER PROGRAM, IF ANY.

I hereby certify that the information above is true and complete to the best of my knowledge and belief.

SIGNATURE

TITLE President

DATE July 12, 1989

TYPE OR PRINT NAME

Gary C. Adams

TELEPHONE NO. 918-582-4242

(This space for State Use)

ORIGINAL SIGNED BY
MIKE WILLIAMS

APPROVED BY

SUPERVISOR, DISTRICT II

TITLE

DATE

JUL 18 1989

CONDITIONS OF APPROVAL, IF ANY:

Submit to Appropriate
District Office
State Lease - 4 copies
Fee Lease - 3 copies

State of New Mexico
Energy, Minerals and Natural Resources Department

Form C-102
Revised 1-1-89

RECEIVED

OIL CONSERVATION DIVISION

P.O. Box 2088
Santa Fe, New Mexico 87504-2088

JUL 17 '89

DISTRICT I
P.O. Box 1980, Hobbs, NM 88240

DISTRICT II
P.O. Drawer DD, Artesia, NM 88210

DISTRICT III
1000 Rio Brazos Rd., Aztec, NM 87410

WELL LOCATION AND ACREAGE DEDICATION PLAT

All Distances must be from the outer boundaries of the section

O. C. D.
ARTESIA OFFICE

Operator Bird Creek Resources, Inc.			Lease RGA		Well No. 1
Unit Letter K	Section 14	Township 23 South	Range 28 East	County NMPM	Eddy
Actual Footage Location of Well: 2080 feet from the South line and 2180 feet from the West line					
Ground level Elev. 3003.2	Producing Formation Delaware		Pool Undesignated	Dedicated Acreage: 40 Acres	

1. Outline the acreage dedicated to the subject well by colored pencil or hatchure marks on the plat below.

2. If more than one lease is dedicated to the well, outline each and identify the ownership thereof (both as to working interest and royalty).

3. If more than one lease of different ownership is dedicated to the well, have the interest of all owners been consolidated by communitization, unitization, force-pooling, etc.?



Yes

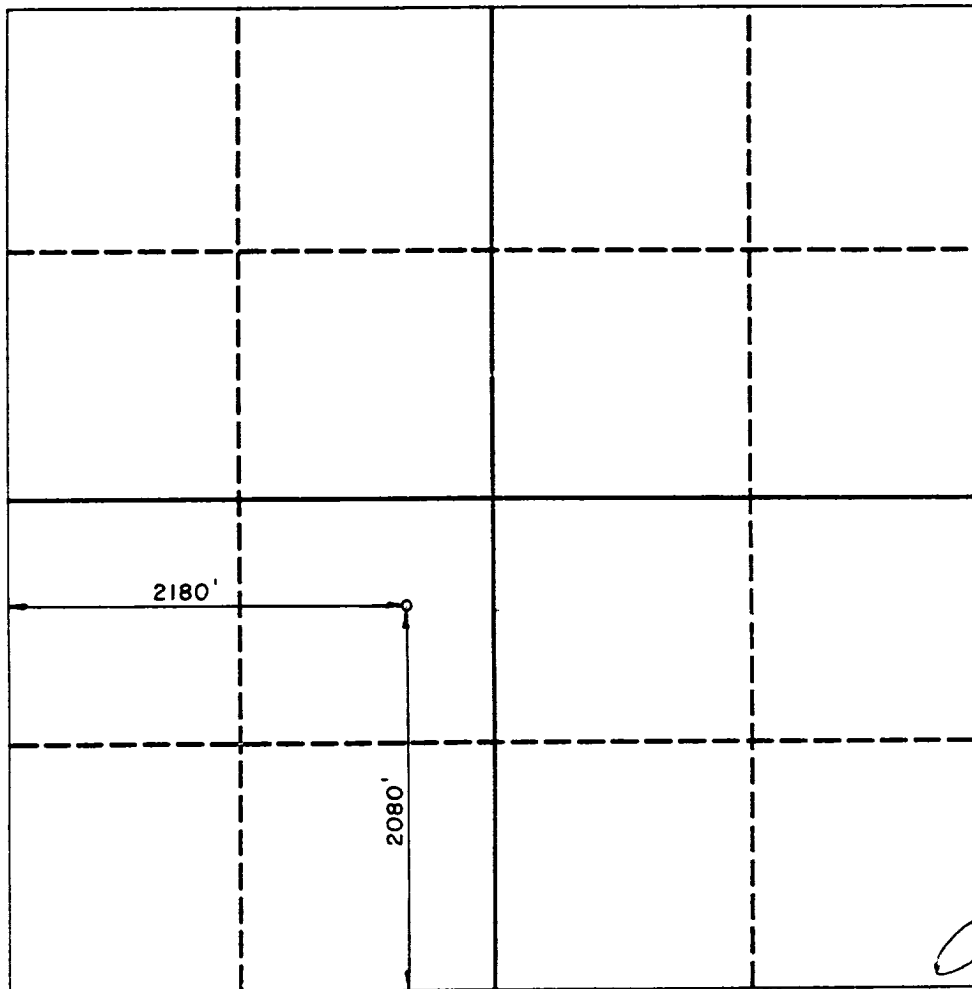


No

If answer is "yes" type of consolidation Unitization

If answer is "no" list the owners and tract descriptions which have actually been consolidated. (Use reverse side of this form if necessary).

No allowable will be assigned to the well until all interests have been consolidated (by communitization, unitization, forced-pooling, or otherwise) or until a non-standard unit, eliminating such interest, has been approved by the Division.



OPERATOR CERTIFICATION

I hereby certify that the information contained herein is true and complete to the best of my knowledge and belief.

Signature

Printed Name

Gary C. Adams

Position

President

Company

Bird Creek Resources, Inc.

Date

July 12, 1989

SURVEYOR CERTIFICATION

I hereby certify that the well location shown on this plat was plotted from field notes of actual surveys made by me or under my supervision, and that the same is true and correct to the best of my knowledge and belief.

Date Surveyed

July 10, 1989

Signature of Surveyor
Professional Surveyor

Certified to: JOHN M. WEST 676
ATMADEX 3239