

OIL CONSERVATION DIVISION

EXHIBIT "A"

DISTRICT I  
P.O. Box 1980, Hobbs, NM 88240

DISTRICT II  
P.O. Drawer DD, Aramis, NM 88210

DISTRICT III  
1000 Rio Brazos Rd., Aztec, NM 87410

P.O. Box 2088  
Santa Fe, New Mexico 87504-2088

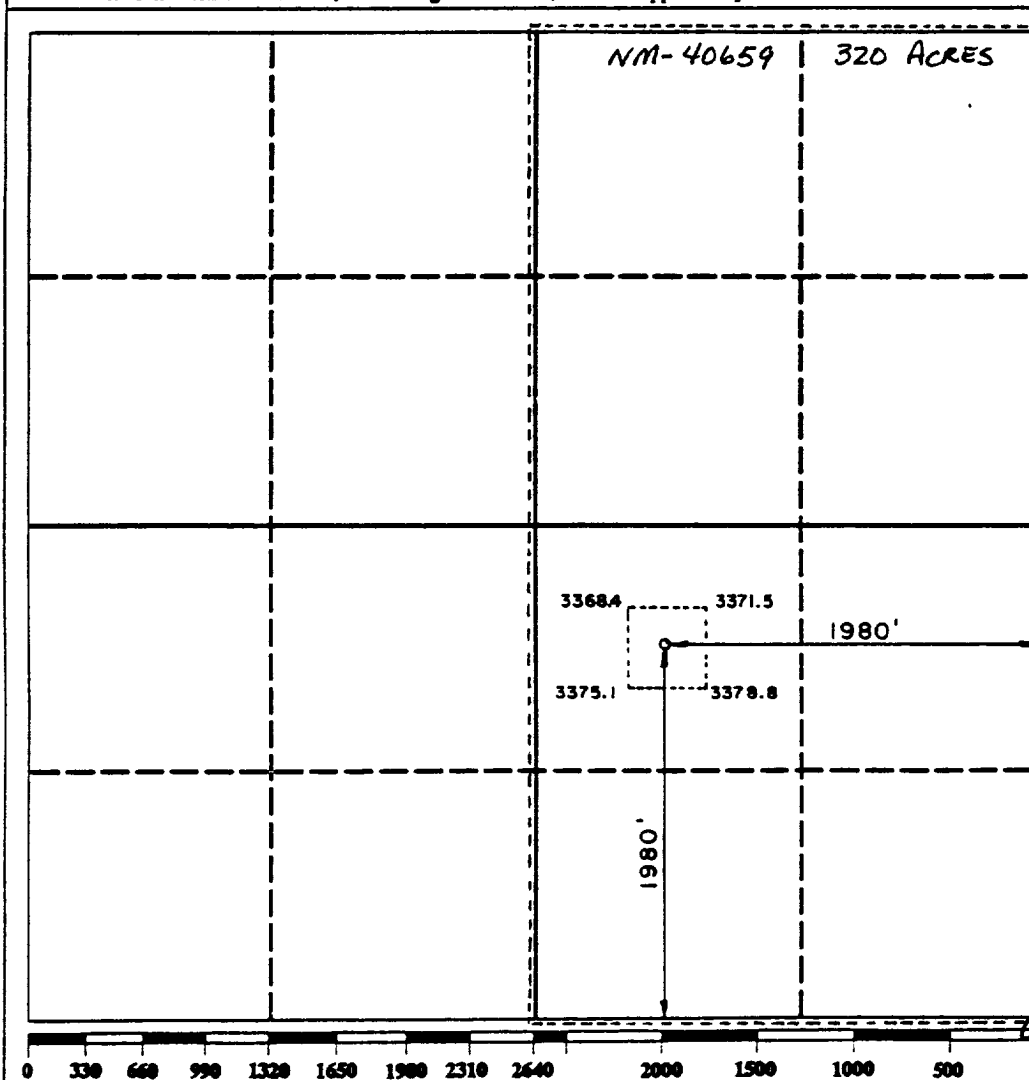
WELL LOCATION AND ACREAGE DEDICATION PLAT

All Distances must be from the outer boundaries of the section

Operator CNG Producing Company			Lease Sand Dunes Federal 28		Well No. 1
Unit Letter J	Section 28	Township 23 South	Range 31 East	County Eddy	

Actual Footage Location of Well:					
1980 feet from the South line and		1980 feet from the East line			
Ground level Elev. 3368.5	Producing Formation Morrow	Pool Und. W. Sand Dunes Morrow	Dedicated Acreage: 320 Acres		

- Outline the acreage dedicated to the subject well by colored pencil or hatchure marks on the plat below.
- If more than one lease is dedicated to the well, outline each and identify the ownership thereof (both as to working interest and royalty).
- If more than one lease of different ownership is dedicated to the well, have the interest of all owners been consolidated by communitization, unitization, force-pooling, etc.?  
☐ Yes ☐ No If answer is "yes" type of consolidation \_\_\_\_\_  
If answer is "no" list the owners and tract descriptions which have actually been consolidated. (Use reverse side of this form if necessary.)  
No allowable will be assigned to the well until all interests have been consolidated (by communitization, unitization, forced-pooling, or otherwise) or until a non-standard unit, eliminating such interest, has been approved by the Division.



<b>OPERATOR CERTIFICATION</b>	
I hereby certify that the information contained herein is true and complete to the best of my knowledge and belief.	
Signature Susan Lacy	
Printed Name SUSAN LACY	
Position ENGR. TECH.	
Company CNG PRODUCING CO-TULSA	
Date AUGUST 25, 1989	

<b>SURVEYOR CERTIFICATION</b>	
I hereby certify that the well location shown on this plat was plotted from field notes of actual surveys made by me or under my supervision, and that the same is true and correct to the best of my knowledge and belief.	
Date Surveyed August 17, 1989	
Signature & Seal of Professional Surveyor	
676 JOHN W. WEST 3239	