

Submit to Appropriate
District Office
State Lease - 6 copies
Fee Lease - 5 copies

State of New Mexico
Energy, Minerals and Natural Resources Department

Form C-101
Revised 1-1-89

DISTRICT I
P.O. Box 1980, Hobbs, NM 88240

DISTRICT II
P.O. Drawer DD, Artesia, NM 88210

DISTRICT III
1000 Rio Brazos Rd., Aztec, NM 87410

OIL CONSERVATION DIVISION
P.O. Box 2088
Santa Fe, New Mexico 87504-2088

JAN 20 1994

API NO. (assigned by OCD on New Wells)

30-015-26205

5. Indicate Type of Lease

STATE ☒

FEE ☐

6. State Oil & Gas Lease No.

VA-804

7. Lease Name or Unit Agreement Name

Angler "ANG" State

8. Well No.

1

9. Pool name or Wildcat

Undesignated Morrow

APPLICATION FOR PERMIT TO DRILL, DEEPEN, OR PLUG BACK

1a. Type of Work:

DRILL ☐ RE-ENTER ☒ DEEPEN ☐ PLUG BACK ☐

b. Type of Well:

OIL WELL ☐ GAS WELL ☒ OTHER ☐

SINGLE ZONE ☐

MULTIPLE ZONE ☐

2. Name of Operator

YATES PETROLEUM CORPORATION ✓

3. Address of Operator

105 South Fourth Street, Artesia, New Mexico 88210

4. Well Location

Unit Letter N : 990 Feet From The South Line and 1880 Feet From The West Line

Section 36

Township 23S

Range 23E

NMPM

Eddy

County

10. Proposed Depth

10,850'

11. Formation

Morrow

12. Rotary or C.T.

Pulling Unit

13. Elevations (Show whether DF, RT, GR, etc.)

4,333.7

14. Kind & Status Plug, Bond

Blanket

15. Drilling Contractor

Not Determined

16. Approx. Date Work will start

ASAP

17.

PROPOSED CASING AND CEMENT PROGRAM

SIZE OF HOLE	SIZE OF CASING	WEIGHT PER FOOT	SETTING DEPTH	SACKS OF CEMENT	EST. TOP
17 1/2	13 3/8"	48#	304'	500 sx	In place
12 1/4	8 5/8"	24#	2020'	1050 sx	In place
7 7/8	5 1/2"	17#	10850'	As warranted	

Yates Petroleum Corporation proposes to re-enter the well P & A'd by Oxy USA, Inc., on 12-29-89. We will clean out to original TD of 10,850', run 5 1/2", J-55 and N-80 casing and cement it to 7000 + with Class "H" cement. Then we will test the Morrow Sands from 10,270' to 10,530'.

Former: OXY - State EC #1

OTD- 10,850 P&A- 12-29-89

Posted IDI-NL
1-28-94

IN ABOVE SPACE DESCRIBE PROPOSED PROGRAM: IF PROPOSAL IS TO DEEPEN OR PLUG BACK, GIVE DATA ON PRESENT PRODUCTIVE ZONE AND PROPOSED NEW PRODUCTIVE ZONE. GIVE BLOWOUT PREVENTER PROGRAM, IF ANY.

I hereby certify that the information above is true and complete to the best of my knowledge and belief.

SIGNATURE

Ken Beardemphl

TITLE

LANDMAN

DATE

1-20-94

TYPE OR PRINT NAME

KEN BEARDEMPHL

TELEPHONE NO. 748-4348

(This space for State Use)

APPROVED BY

Mark Gehlert

TITLE

GEOLOGIST

DATE

1-27-94

CONDITIONS OF APPROVAL, IF ANY:

GOOD FOR 180 DAYS

EXPIRES 2-27-94

UNLESS DRILLING UNDERWAY

Submit to Appropriate
District Office
State Lease - 4 copies
Fee Lease - 3 copies

State of New Mexico
Energy, Minerals and Natural Resources Department

Form C-102
Revised 1-1-89

OIL CONSERVATION DIVISION

P.O. Box 2088
Santa Fe, New Mexico 87504-2088

DISTRICT I
P.O. Box 1980, Hobbs, NM 88240

DISTRICT II
P.O. Drawer DD, Artesia, NM 88210

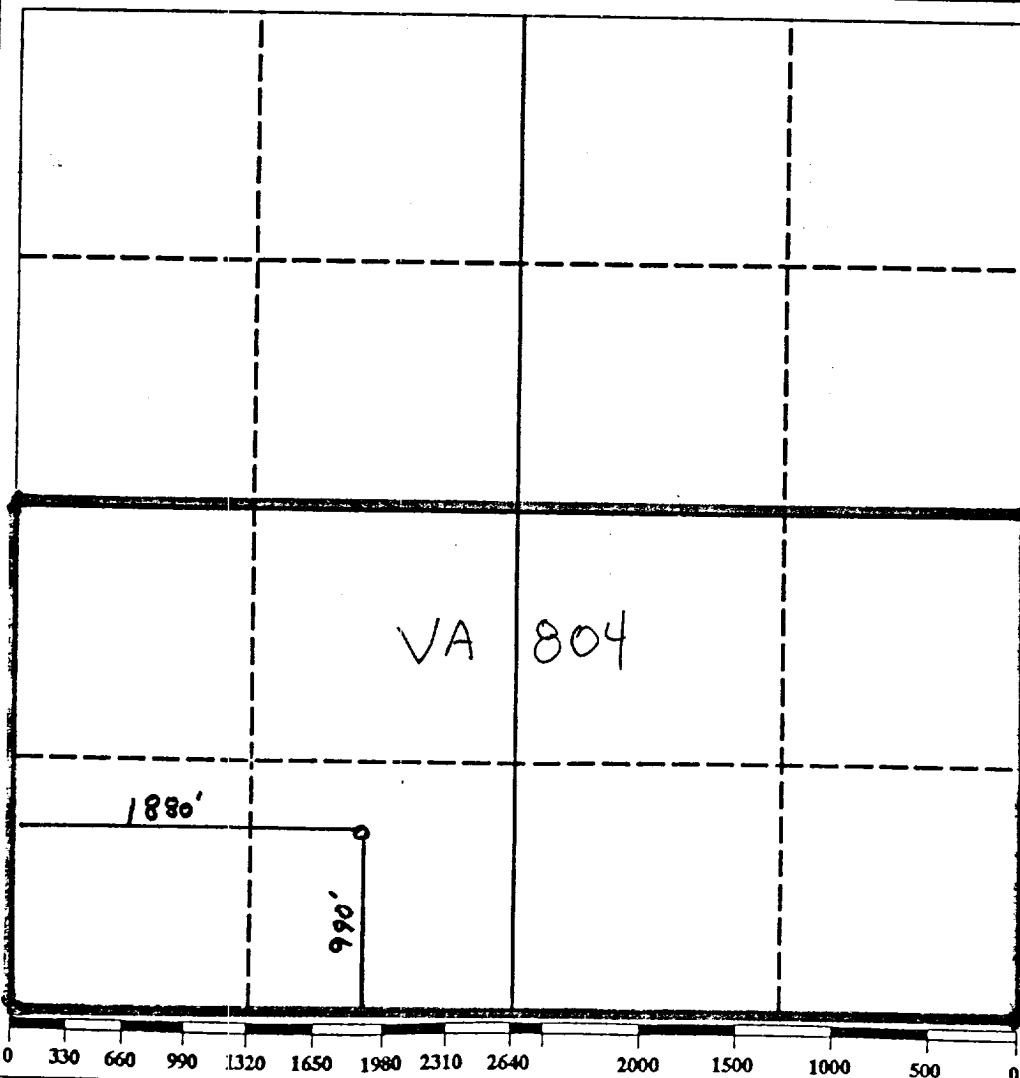
DISTRICT III
1000 Rio Brazos Rd., Aztec, NM 87410

WELL LOCATION AND ACREAGE DEDICATION PLAT

All Distances must be from the outer boundaries of the section

Operator Yates Petroleum Corporation			Lease Angler "ANG" St.		Well No. 1
Unit Letter N	Section 36	Township 23S	Range 23E	County Eddy	NMPM
Actual Footage Location of Well: 990 feet from the South line and 1880 feet from the West line					
Ground level Elev. 4333.7	Producing Formation Morrow		Pool Undesignated Morrow	Dedicated Acreage: 320 Acres	

1. Outline the acreage dedicated to the subject well by colored pencil or hatchure marks on the plat below.
2. If more than one lease is dedicated to the well, outline each and identify the ownership thereof (both as to working interest and royalty).
3. If more than one lease of different ownership is dedicated to the well, have the interest of all owners been consolidated by communitization, unitization, force-pooling, etc.?
☐ Yes ☐ No If answer is "yes" type of consolidation _____
If answer is "no" list the owners and tract descriptions which have actually been consolidated. (Use reverse side of this form if necessary.) _____
No allowable will be assigned to the well until all interests have been consolidated (by communitization, unitization, forced-pooling, or otherwise) or until a non-standard unit, eliminating such interest, has been approved by the Division.



OPERATOR CERTIFICATION

I hereby certify that the information contained herein is true and complete to the best of my knowledge and belief.

Signature
Ken Beardemphl
Printed Name
Ken Beardemphl
Position
Landman
Company
Yates Petroleum Corporation
Date
1/18/94

SURVEYOR CERTIFICATION

I hereby certify that the well location shown on this plat was plotted from field notes of actual surveys made by me or under my supervision, and that the same is true and correct to the best of my knowledge and belief.

Date Surveyed
Signature & Seal of
Professional Surveyor
Refer to Original Plat
Certificate No.

Submit to Appropriate
District Office
State Lease - 4 copies
Fee Lease - 3 copies

State of New Mexico
Energy, Minerals and Natural Resources Department

Form C-102
Revised 1-1-89

OIL CONSERVATION DIVISION

P.O. Box 2088

Santa Fe, New Mexico 87504-2088

DISTRICT I

P.O. Box 1980, Hobbs, NM 88240

DISTRICT II

P.O. Drawer DD, Artesia, NM 88210

DISTRICT III

1000 Rio Brazos Rd., Aztec, NM 87410

WELL LOCATION AND ACREAGE DEDICATION PLAT

All Distances must be from the outer boundaries of the section

Operator Oxy USA, Inc.			Lease State EC		Well No. 1
Unit Letter N	Section 36	Township 23 South	Range 23 East	County NMPM	Eddy
Actual Footage Location of Well: 990 feet from the South line and 1880 feet from the West line					
Ground level Elev. 4333.7	Producing Formation Morrow		Pool Undesignated Morrow	Dedicated Acreage: 320 Acres	

1. Outline the acreage dedicated to the subject well by colored pencil or hatchure marks on the plat below.
2. If more than one lease is dedicated to the well, outline each and identify the ownership thereof (both as to working interest and royalty).
3. If more than one lease of different ownership is dedicated to the well, have the interest of all owners been consolidated by communitization, unitization, forced-pooling, etc.?
☐ Yes ☐ No If answer is "yes" type of consolidation _____
If answer is "no" list the owners and tract descriptions which have actually been consolidated. (Use reverse side of this form if necessary).
No allowable will be assigned to the well until all interests have been consolidated (by communitization, unitization, forced-pooling, or otherwise) or until a non-standard unit, eliminating such interest, has been approved by the Division.

OPERATOR CERTIFICATION

I hereby certify that the information contained herein is true and complete to the best of my knowledge and belief.

Signature

F. A. Vitrano

Printed Name

F. A. Vitrano

Position

Dist. Oper. Mgr. - Prod.

Company

OXY USA Inc.

Date

8-10-89

SURVEYOR CERTIFICATION

I hereby certify that the well location shown on this plat was plotted from field notes of actual surveys made by me or under my supervision, and that the same is true and correct to the best of my knowledge and belief.

Date Surveyed

July 31, 1989

Signature & Seal of
Professional Surveyor

125630
0 330 660 990 1320 1650 1980 2310 2640 2000 1500 1000 500 0

1880'
990'

676
3239

JOHN W. WEST

YATES PETROLEUM CORPORATION

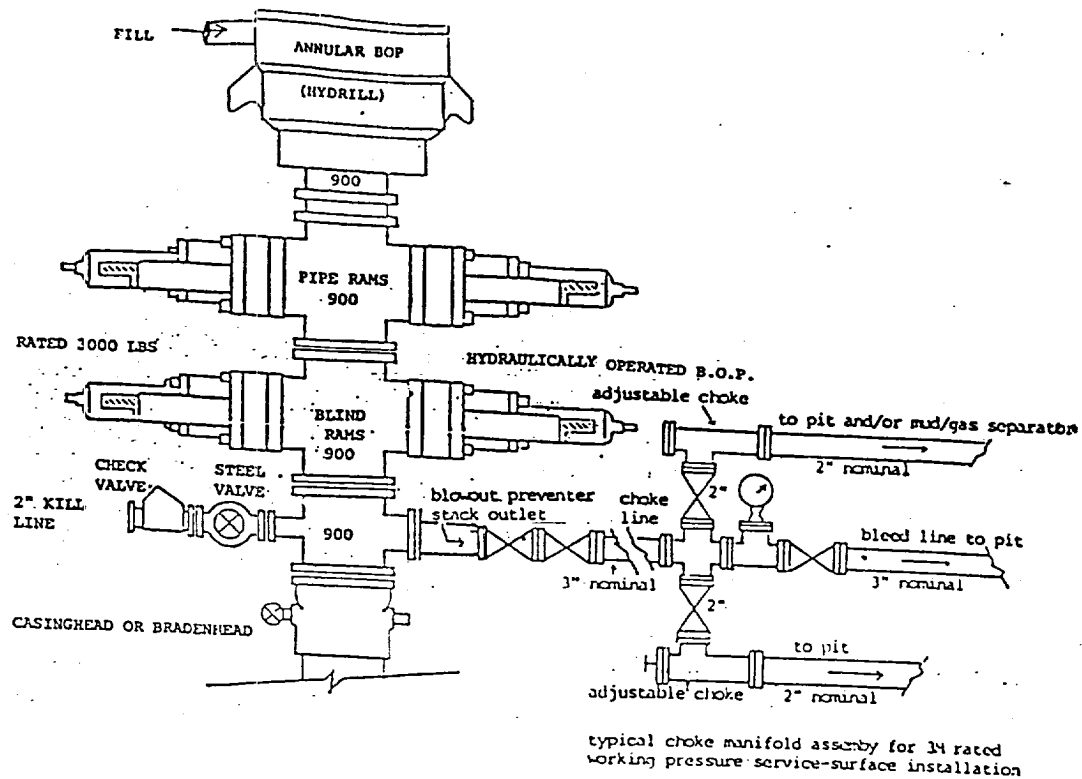


EXHIBIT B

THE FOLLOWING CONSTITUTES THE MINIMUM BLOWOUT PREVENTER
REQUIREMENTS FOR 3000 PSI WP SYSTEMS

1. All preventers to be hydraulically operated with secondary manual controls installed prior to drilling out from under casing.
2. Choke outlet to be a minimum of 3" diameter.
3. Kill line to be of all steel construction of 3" minimum diameter.
4. All connections from operating manifolds to preventers to be all steel. Hole or tube to be a minimum of one inch in diameter.
5. The available closing pressure shall be at least 15% in excess of that required with sufficient volume to operate the B.O.P.'s.
6. All connections to and from preventer to have a pressure rating equivalent to that of the B.O.P.'s.
7. Inside blowout preventer to be available on rig floor.
8. Operating controls to be located a safe distance from the rig floor.
9. Hole must be kept filled on trips below intermediate casing.