

Submit to Appropriate  
District Office  
State Lease - 6 copies  
Fee Lease - 5 copies

State of New Mexico  
Energy, Minerals and Natural Resources Department

Form C-101  
Revised 1-1-89

OIL CONSERVATION DIVISION

DISTRICT I  
P.O. Box 1980, Hobbs, NM 88240

DISTRICT II  
P.O. Drawer DD, Artesia, NM 88210

DISTRICT III  
1000 Rio Brazos Rd., Aztec, NM 87410

P.O. Box 2088  
Santa Fe, New Mexico 87504-2088

MAR 29 '90

API NO. (assigned by OCD on New Wells)

30-015-26321

5. Indicate Type of Lease

STATE ☐

FEE ☒

6. State Oil & Gas Lease No.

APPLICATION FOR PERMIT TO DRILL, DEEPEN, OR PLUG BACK

1a. Type of Work:

DRILL ☒

RE-ENTER ☐

DEEPEN ☐

PLUG BACK ☐

b. Type of Well:

OIL  
WELL ☒

GAS  
WELL ☐

OTHER ☐

SINGLE  
ZONE ☒

MULTIPLE  
ZONE ☐

2. Name of Operator

Bird Creek Resources, Inc. ✓

3. Address of Operator

1412 S. Boston, Ste. 550, Tulsa, Okla. 74119

4. Well Location

Unit Letter F : 2105' Feet From The South Line and 560' Feet From The East Line

Section 15 Township 23S Range 28E NMPM Eddy County

10. Proposed Depth  
6250'

11. Formation  
Delaware

12. Rotary or C.T.  
Rotary

13. Elevations (Show whether DF, RT, GR, etc.)  
2996.7' GR

14. Kind & Status Plug. Bond  
Blanket

15. Drilling Contractor  
Larue

16. Approx. Date Work will start  
6-1-90

17.

PROPOSED CASING AND CEMENT PROGRAM

SIZE OF HOLE	SIZE OF CASING	WEIGHT PER FOOT	SETTING DEPTH	SACKS OF CEMENT	EST. TOP
12 1/4"	8 5/8"	24#	500'	350sx C	Circ to surf
7 7/8"	5 1/2"	15.5#	6250'	2stg-1100sx H	"
				1250sx Lite	

APPROVAL VALID FOR 180 DAYS  
PERMIT EXPIRES 9/30/90  
UNLESS DRILLING UNDERWAY

IN ABOVE SPACE DESCRIBE PROPOSED PROGRAM: IF PROPOSAL IS TO DEEPEN OR PLUG BACK, GIVE DATA ON PRESENT PRODUCTIVE ZONE AND PROPOSED NEW PRODUCTIVE ZONE. GIVE BLOWOUT PREVENTER PROGRAM, IF ANY.

I hereby certify that the information above is true and complete to the best of my knowledge and belief.

SIGNATURE Bill M. Burks TITLE Agent DATE 3-22-90

TYPE OR PRINT NAME Bill M. Burks

TELEPHONE NO 918-582-3855

(This space for State Use)

ORIGINAL SIGNED BY  
MIKE WILLIAMS  
SUPERVISOR, DISTRICT II

APPROVED BY \_\_\_\_\_ TITLE \_\_\_\_\_ DATE MAR 30 1990

CONDITIONS OF APPROVAL, IF ANY:

## OIL CONSERVATION DIVISION

P.O. Box 2088  
Santa Fe, New Mexico 87504-2088

DISTRICT I  
P.O. Box 1980, Hobbs, NM 88240

DISTRICT II  
P.O. Drawer DD, Artesia, NM 88210

DISTRICT III  
1000 Rio Brazos Rd., Aztec, NM 87410

### WELL LOCATION AND ACREAGE DEDICATION PLAT

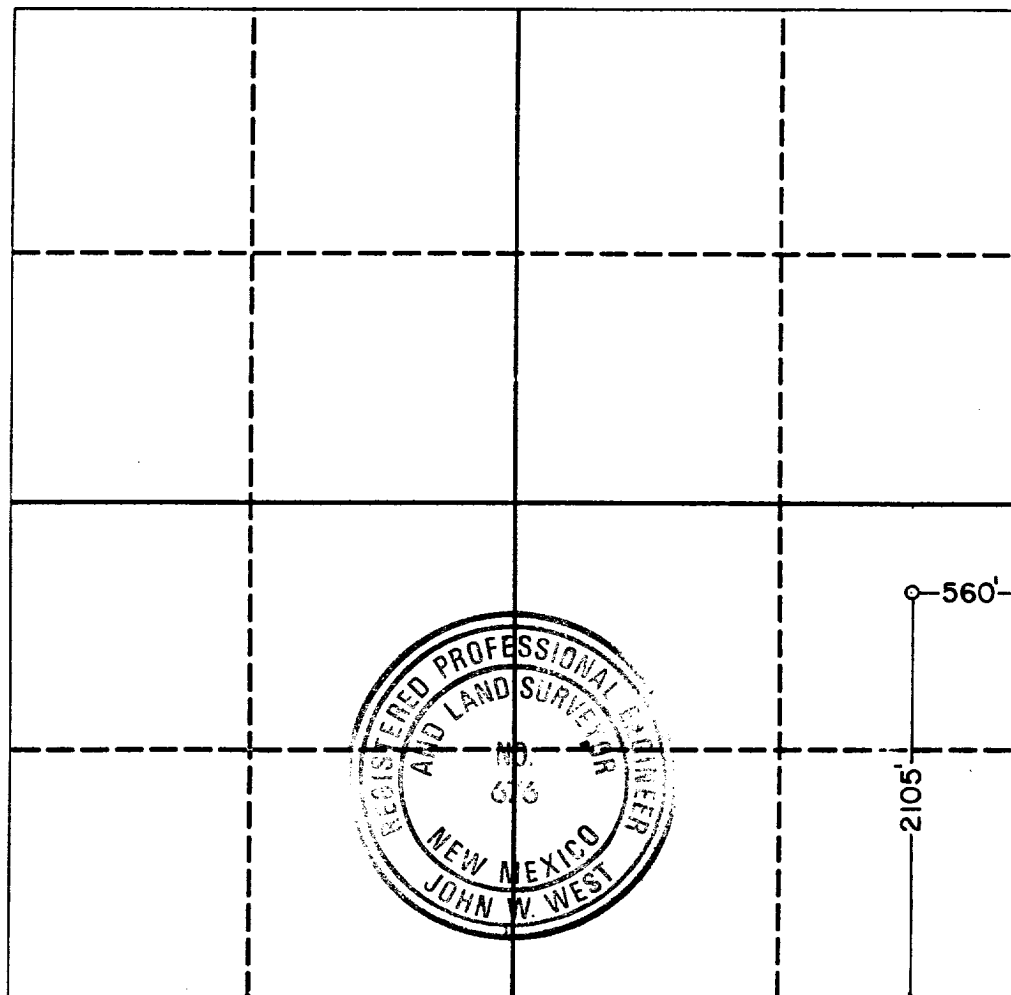
All Distances must be from the outer boundaries of the section

Operator Bird Creek Resources			Lease Caviness-Payne		Well No. 1
Unit Letter I	Section 15	Township 23 South	Range 28 East	County Eddy	

#### Actual Footage Location of Well:

2105 feet from the South line and		560 feet from the East line	
Ground level Elev. 2996.7	Producing Formation Delaware	Pool East Loving Delaware	Dedicated Acreage: 40 Acres

- Outline the acreage dedicated to the subject well by colored pencil or hatchure marks on the plat below.
- If more than one lease is dedicated to the well, outline each and identify the ownership thereof (both as to working interest and royalty).
- If more than one lease of different ownership is dedicated to the well, have the interest of all owners been consolidated by communitization, unitization, force-pooling, etc.?  
☐ Yes ☐ No If answer is "yes" type of consolidation \_\_\_\_\_  
If answer is "no" list the owners and tract descriptions which have actually been consolidated. (Use reverse side of this form if necessary).  
No allowable will be assigned to the well until all interests have been consolidated (by communitization, unitization, forced-pooling, or otherwise) or until a non-standard unit, eliminating such interest, has been approved by the Division.



#### OPERATOR CERTIFICATION

I hereby certify that the information contained herein is true and complete to the best of my knowledge and belief.

Signature  
Bill M. Burks  
Printed Name  
Bill M. Burks  
Position  
Agent  
Company  
Bird Creek Resources, Inc.  
Date  
3-26-90

#### SURVEYOR CERTIFICATION

I hereby certify that the well location shown on this plat was plotted from field notes of actual surveys made by me or under my supervision, and that the same is true and correct to the best of my knowledge and belief.

Date Surveyed  
2-21-1990  
Signature & Seal of Professional Surveyor  
John W. West  
Certificate No. JOHN W. WEST, 676  
RONALD J. EIDSON, 3239

# BOP STACK

