

Submit to Appropriate  
District Office  
State Lease - 4 copies  
Fee Lease - 3 copies

State of New Mexico  
Energy, Minerals and Natural Resources Department

Form C-102  
Revised 1-1-89

OIL CONSERVATION DIVISION

P.O. Box 2088  
Santa Fe, New Mexico 87504-2088

DISTRICT I  
P.O. Box 1980, Hobbs, NM 88240

DISTRICT II  
P.O. Drawer DD, Artesia, NM 88210

DISTRICT III  
1000 Rio Brazos Rd., Aztec, NM 87410

WELL LOCATION AND ACREAGE DEDICATION PLAT

All Distances must be from the outer boundaries of the section

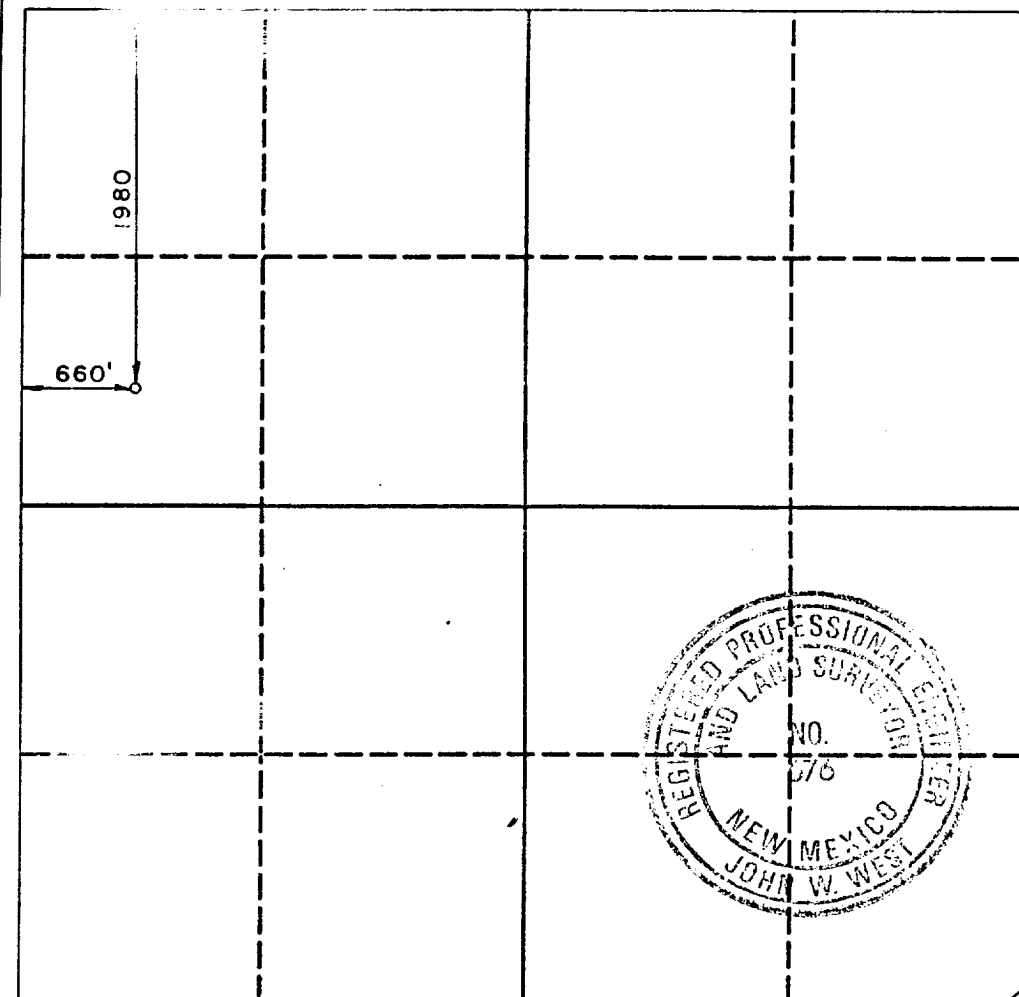
Operator BIRD CREEK RESOURCES, INC			Lease TRACTA		Well No. 2
Unit Letter E	Section 14	Township 23-S	Range 28-E	County NMPM EDDY	

Actual Footage Location of Well:

1980 feet from the NORTH line and 660 feet from the WEST line

Ground level Elev. 2997.1	Producing Formation Delaware	Pool East Loving Delaware	Dedicated Acreage: 40 Acres
------------------------------	---------------------------------	------------------------------	--------------------------------

- Outline the acreage dedicated to the subject well by colored pencil or hatchure marks on the plat below.
- If more than one lease is dedicated to the well, outline each and identify the ownership thereof (both as to working interest and royalty).
- If more than one lease or ownership is dedicated to the well, have the interest of all owners been consolidated by communitization, unitization, or otherwise?  
☐ Yes ☐ No If answer is "yes" type of consolidation \_\_\_\_\_  
If "yes" list the owners and tract descriptions which have actually been consolidated. (Use reverse side of this plat if necessary.)  
Name of unit will be assigned to the well until all interests have been consolidated (by communitization, unitization, forced-pooling, or otherwise) or until a unit standard unit, eliminating such interest, has been approved by the Division.



OPERATOR CERTIFICATION

I hereby certify that the information contained herein is true and complete to the best of my knowledge and belief.

Signature  
Bill M. Burks  
Printed Name  
Bill M. Burks  
Position  
Agent  
Company  
Bird Creek Resources Inc  
Date  
4-2-90

SURVEYOR CERTIFICATION

I hereby certify that the well location shown on this plat was plotted from field notes of actual surveys made by me or under my supervision, and that the same is true and correct to the best of my knowledge and belief.

Date Surveyed  
MARCH 30, 1990  
Signature & Seal of  
Professional Surveyor

Certificate No. JOHN W. WEST, 676  
RONALD J. EIDSON, 3239