

Submit to Appropriate
District Office
State Lease - 6 copies
Fee Lease - 5 copies

State of New Mexico
Energy, Minerals and Natural Resources Department

Form 1-101
Revised 1-1-89

file

OIL CONSERVATION DIVISION

DISTRICT I
P.O. Box 1980, Hobbs, NM 88240

DISTRICT II
P.O. Drawer DD, Artesia, NM 88210

DISTRICT III
1000 Rio Brazos Rd., Aztec, NM 87410

P.O. Box 2088
Santa Fe, New Mexico 87504-2088

APR 4 '90

O. C. D.
ARTESIA OFFICE

API NO. (assigned by OCD on New Wells)

30-015-26331

5. Indicate Type of Lease

STATE ☐

SEE ☒

6. State Oil & Gas Lease No.

7. Lease Name or Unit Agreement No.

RGA

8. Well No.

3

9. Pool name or Wildcat

East Loving Delaware

1a. Type of Work:

DRILL ☒

RE-ENTER ☐

DEEPEN ☐

PLUG BACK ☐

b. Type of Well:

OIL
WELL ☒

GAS
WELL ☐

OTHER ☐

SINGLE
ZONE ☒

MULTIPLE
ZONE ☐

2. Name of Operator

Bird Creek Resources, Inc. ✓

3. Address of Operator

1412 S. Boston, Ste. 550, Tulsa, Okla. 74119

4. Well Location

Unit Letter M

: 760'

Feet From The South

Line and 660

Feet From The West

Line

Section 14

Township 23S

Range 28E

NMPM

Eddy

County

10. Proposed Depth
6250'

11. Formation
Delaware

12. Rotary or C.T.
Rotary

13. Elevations (Show whether DF, RT, GR, etc.)
2991.7 GR

14. Kind & Status Plug. Bond
Blanket

15. Drilling Contractor
Larue

16. Approx. Date Work will start
7-1-90

17.

PROPOSED CASING AND CEMENT PROGRAM

SIZE OF HOLE

SIZE OF CASING

WEIGHT PER FOOT

SETTING DEPTH

SACKS OF CEMENT

EST. TOP

12 1/4"

8 5/8"

24#

500'

350sx C

Circ to surf

7 7/8"

5 1/2"

15.5#

6250'

2stg-1100sx_H
1250sx Lite

APPROVAL VALID FOR 180 DAYS
PERMIT EXPIRES 10/5/90
UNLESS DRILLING UNDERWAY

IN ABOVE SPACE DESCRIBE PROPOSED PROGRAM: IF PROPOSAL IS TO DEEPEN OR PLUG BACK, GIVE DATA ON PRESENT PRODUCTIVE ZONE AND PROPOSED NEW PRODUCTIVE ZONE. GIVE BLOWOUT PREVENTER PROGRAM, IF ANY.

I hereby certify that the information above is true and complete to the best of my knowledge and belief.

SIGNATURE Bill M. Burks TITLE Agent DATE 3-22-90

TYPE OR PRINT NAME Bill M. Burks

TELEPHONE NO 918-582-385

(This space for State Use)

ORIGINAL SIGNED BY

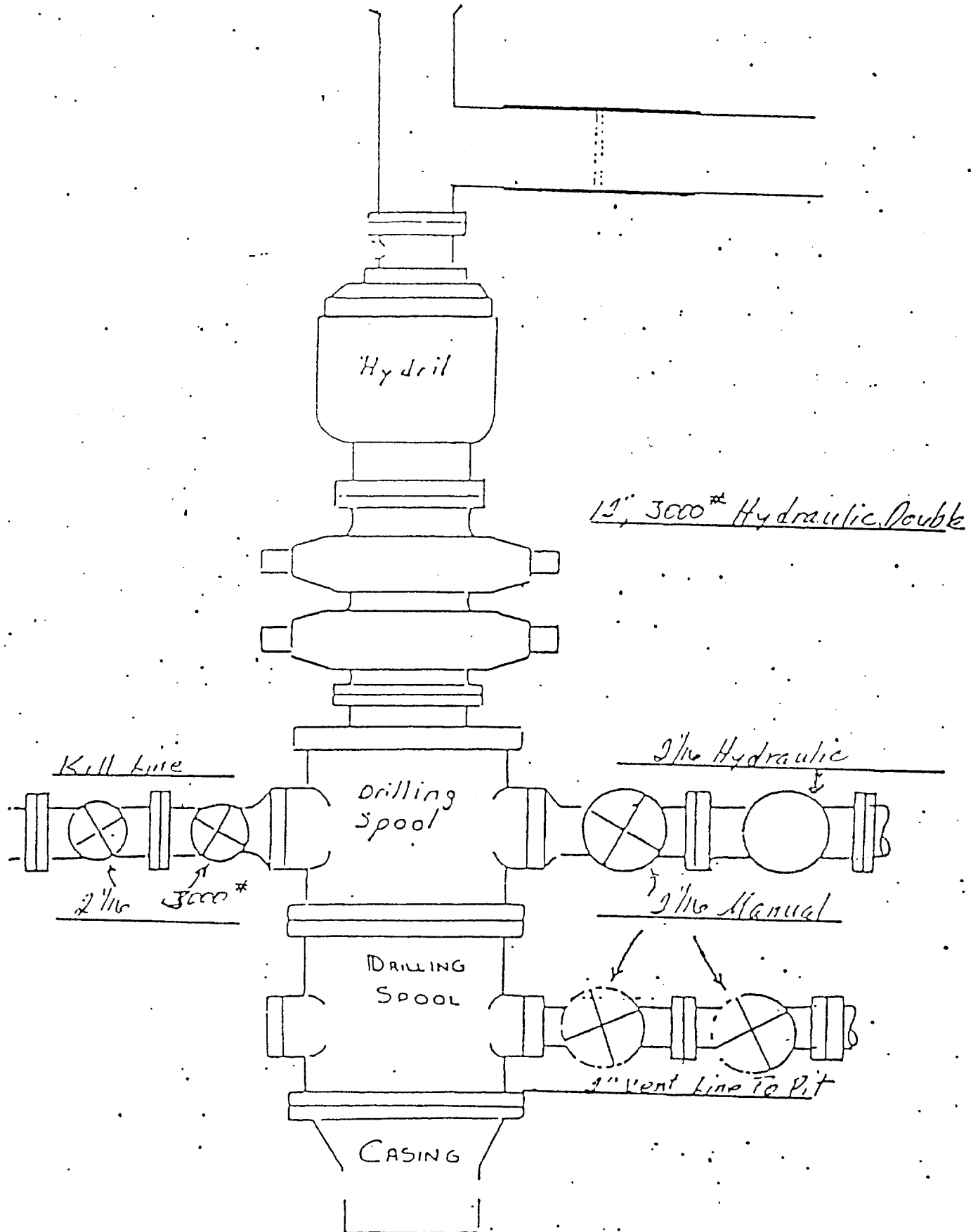
MIKE WILLIAMS

SUPERVISOR, DISTRICT II

APPROVED BY _____ TITLE _____ DATE APR 3 1990

CONDITIONS OF APPROVAL, IF ANY

BOP STACK



Submit to Appropriate
District Office
State Lease - 4 copies
Fee Lease - 3 copies

State of New Mexico
Energy, Minerals and Natural Resources Department

Form C-102
Revised 1-1-89

OIL CONSERVATION DIVISION

P.O. Box 2088

Santa Fe, New Mexico 87504-2088

DISTRICT I
P.O. Box 1980, Hobbs, NM 88240

DISTRICT II
P.O. Drawer DD, Artesia, NM 88210

DISTRICT III
1000 Rio Brazos Rd., Aztec, NM 87410

WELL LOCATION AND ACREAGE DEDICATION PLAT

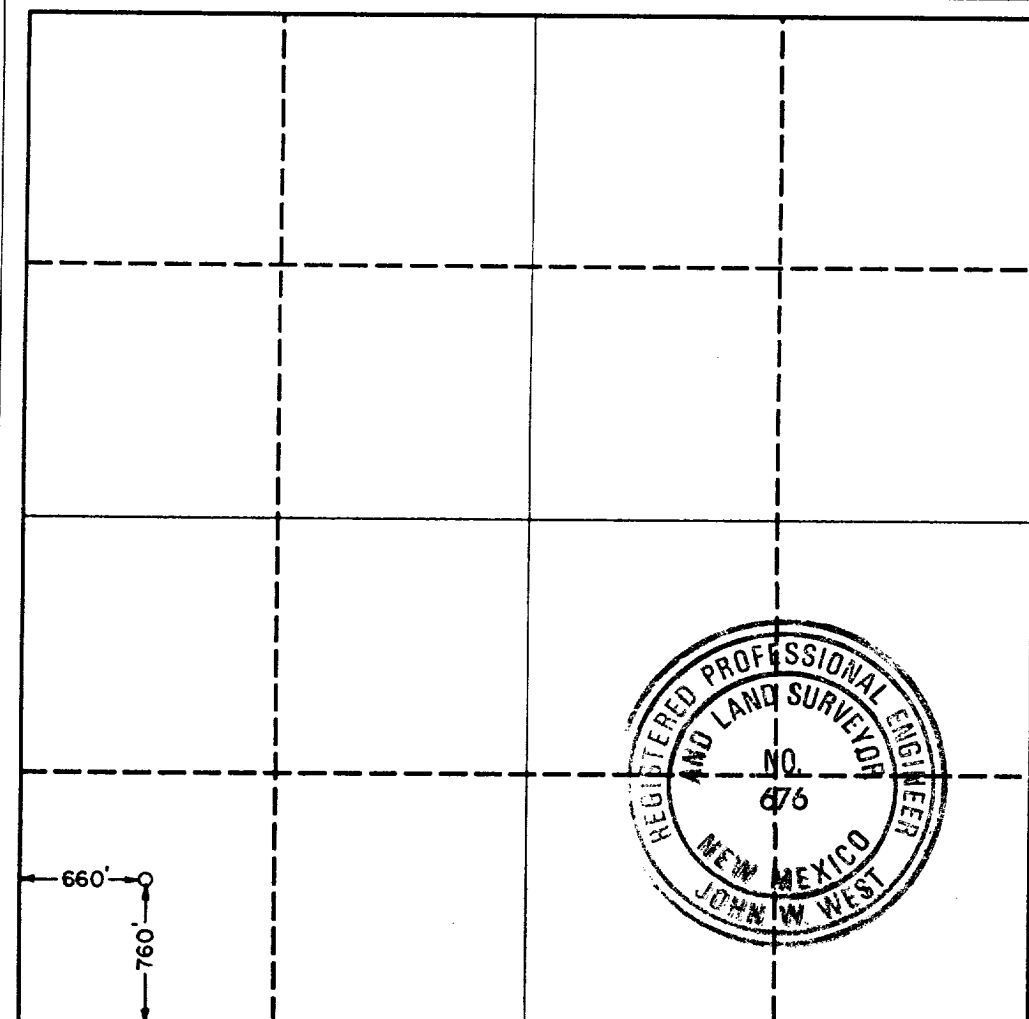
All Distances must be from the outer boundaries of the section

Operator Bird Creek Resources, Inc.			Lease R.G.A.		Well No. 3
Unit Letter M	Section 14	Township 23 South	Range 28 East	County Eddy	
Actual Footage Location of Well: 760 feet from the South line and 660 feet from the West line					
Ground level Elev. 2991.7	Producing Formation Delaware		Pool East Loving Delaware	Dedicated Acreage: 40 Acres	

1. Outline the acreage dedicated to the subject well by colored pencil or hatchure marks on the plat below.
2. If more than one lease is dedicated to the well, outline each and identify the ownership thereof (both as to working interest and royalty).
3. If more than one lease of different ownership is dedicated to the well, have the interest of all owners been consolidated by communitization, unitization, force-pooling, etc.?
☐ Yes ☐ No If answer is "yes" type of consolidation _____

If answer is "no" list the owners and tract descriptions which have actually been consolidated. (Use reverse side of this form if necessary.) _____

No allowable will be assigned to the well until all interests have been consolidated (by communitization, unitization, forced-pooling, or otherwise) or until a non-standard unit, eliminating such interest, has been approved by the Division.



OPERATOR CERTIFICATION

I hereby certify that the information contained herein is true and complete to the best of my knowledge and belief.

Signature
Bill M. Burks
Printed Name
Bill M. Burks
Position
Agent
Company
Bird Creek Resources Inc.
Date
4-2-90

SURVEYOR CERTIFICATION

I hereby certify that the well location shown on this plat was plotted from field notes of actual surveys made by me or under my supervision, and that the same is true and correct to the best of my knowledge and belief.

Date Surveyed
March 27, 1990

Signature & Seal of
Professional Surveyor

Signature
John W. West
Certificate No. JOHN W. WEST, 676
RONALD J. EIDSON, 3239