

Submit to Appropriate
District Office
State Lease - 6 copies
Fee Lease - 5 copies

State of New Mexico
Energy, Minerals and Natural Resources Department

Form C-101
Revised 1-1-89

OIL CONSERVATION DIVISION

DISTRICT I
P.O. Box 1980, Hobbs, NM 88240

P.O. Box 2088
Santa Fe, New Mexico 87504-2088

DISTRICT II
P.O. Drawer DD, Artesia, NM 88210

DISTRICT III
1000 Rio Brazos Rd., Aztec, NM 87410

APR 12 '90

API NO. (assigned by OCD on New Wells)

30-015-26348

5. Indicate Type of Lease

STATE ☐

FEE ☒

6. State Oil & Gas Lease No.

APPLICATION FOR PERMIT TO DRILL, DEEPEN, OR PLUG BACK

1a. Type of Work:

DRILL ☒

RE-ENTER ☐

DEEPEN ☐

PLUG BACK ☐

b. Type of Well:

OIL
WELL ☒

GAS
WELL ☐

OTHER ☐

SINGLE
ZONE ☒

MULTIPLE
ZONE ☐

2. Name of Operator

RB Operating Company

3. Address of Operator

2412 N. Grandview, Suite 201, Odessa, Texas 79761

4. Well Location

Unit Letter J : 1750 Feet From The East Line and 1950 Feet From The South

Section 23

Township 23S

Range 28E

NMPM

Eddy

County

10. Proposed Depth

6400'

11. Formation

Delaware

12. Rotary or C.T.

Rotary

13. Elevations (Show whether DF, RT, GR, etc.)

3002. GR.

14. Kind & Status Plug. Bond

Blanket

15. Drilling Contractor

Grace

16. Approx. Date Work will start

4/29/90

17.

PROPOSED CASING AND CEMENT PROGRAM

SIZE OF HOLE	SIZE OF CASING	WEIGHT PER FOOT	SETTING DEPTH	SACKS OF CEMENT	EST. TOP
12 1/4	8 5/8	24	525	400	Circ.
7 7/8	5 1/2	15 1/2	6400	2000	Circ.

1. Drill 12 1/4" hole to depth of 550'.
2. Set 8 5/8" casing to 550' and cement same to surface.
3. Test casing and B.O.P.'s to 1500 psi, prior to drilling out shoe joint.
4. Drill 7 7/8" hole to a depth of 6400', log and evaluate.

Per ID-1

4-27-90

New Loc & API

APPROVAL VALID FOR 180 DAYS
PERMIT EXPIRES 10/29/90
UNLESS DRILLING UNDERWAY

IN ABOVE SPACE DESCRIBE PROPOSED PROGRAM: IF PROPOSAL IS TO DEEPEN OR PLUG BACK, GIVE DATA ON PRESENT PRODUCTIVE ZONE AND PROPOSED NEW PRODUCTIVE ZONE. GIVE BLOWOUT PREVENTER PROGRAM, IF ANY.

I hereby certify that the information above is true and complete to the best of my knowledge and belief.

SIGNATURE

TITLE Area Manager

DATE 3/29/90

(915)

TYPE OR PRINT NAME

F.D. Schoch

TELEPHONE NO. 362-630

(This space for State Use)

ORIGINAL SIGNED BY
MIKE WILLIAMS
SUPERVISOR, DISTRICT II

APPROVED BY

TITLE

DATE

APR 24 1990

CONDITIONS OF APPROVAL, IF ANY:

Submit to Appropriate
District Office
State Lease - 4 copies
Fee Lease - 3 copies

State of New Mexico
Energy, Minerals and Natural Resources Department

RECEIVED

Form C-102
Revised 1-1-89

OIL CONSERVATION DIVISION

DISTRICT I
P.O. Box 1980, Hobbs, NM 88240

P.O. Box 2088

Santa Fe, New Mexico 87504-2088

APR 23 '90

DISTRICT II
P.O. Drawer DD, Artesia, NM 88210

DISTRICT III
1000 Rio Brazos Rd., Aztec, NM 87410

WELL LOCATION AND ACREAGE DEDICATION PLAT

All Distances must be from the outer boundaries of the section

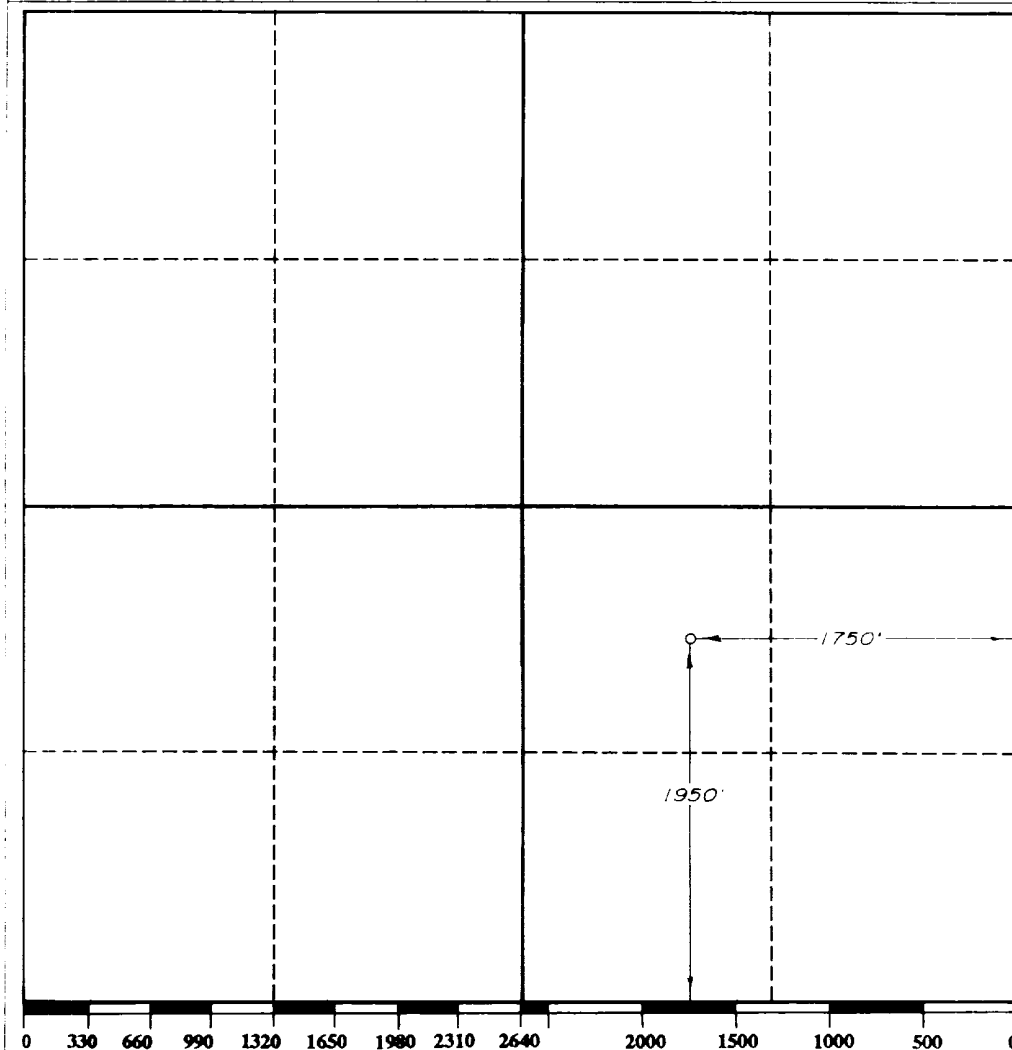
© C. D.
ARTESIA, OFFICE

Operator R B OPERATING COMPANY			Lease SOUTH CULEBRA BLUFF 23		Well No. 23-7
Unit Letter J	Section 23	Township 23-SOUTH	Range 28-EAST	County EDDY	

Actual Footage Location of Well:

1950 feet from the SOUTH line and	1750 feet from the EAST line
Ground level Elev. 3002'	Producing Formation Delaware
Pool E. Lewis Delaware	Dedicated Acreage: 10 Acres

- Outline the acreage dedicated to the subject well by colored pencil or hachure marks on the plat below.
- If more than one lease is dedicated to the well, outline each and identify the ownership thereof (both as to working interest and royalty).
- If more than one lease of different ownership is dedicated to the well, have the interest of all owners been consolidated by communitization, unitization, force-pooling, etc.?
☐ Yes ☐ No If answer is "yes" type of consolidation _____
If answer is "no" list the owners and tract descriptions which have actually been consolidated. (Use reverse side of this form if necessary.)
No allowable will be assigned to the well until all interests have been consolidated (by communitization, unitization, forced-pooling, or otherwise) or until a non-standard unit, eliminating such interest, has been approved by the Division.



OPERATOR CERTIFICATION

I hereby certify that the information contained herein is true and complete to the best of my knowledge and belief.

Signature
Printed Name

F.D. Schoch

Position

Area Manager

Company

RB Operating Company

Date

4/19/90

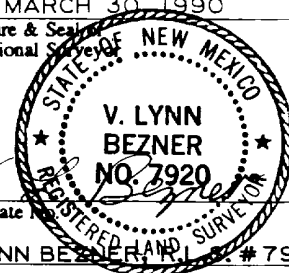
SURVEYOR CERTIFICATION

I hereby certify that the well location shown on this plat was plotted from field notes of actual surveys made by me or under my supervision, and that the same is true and correct to the best of my knowledge and belief.

Date Surveyed

MARCH 30, 1990

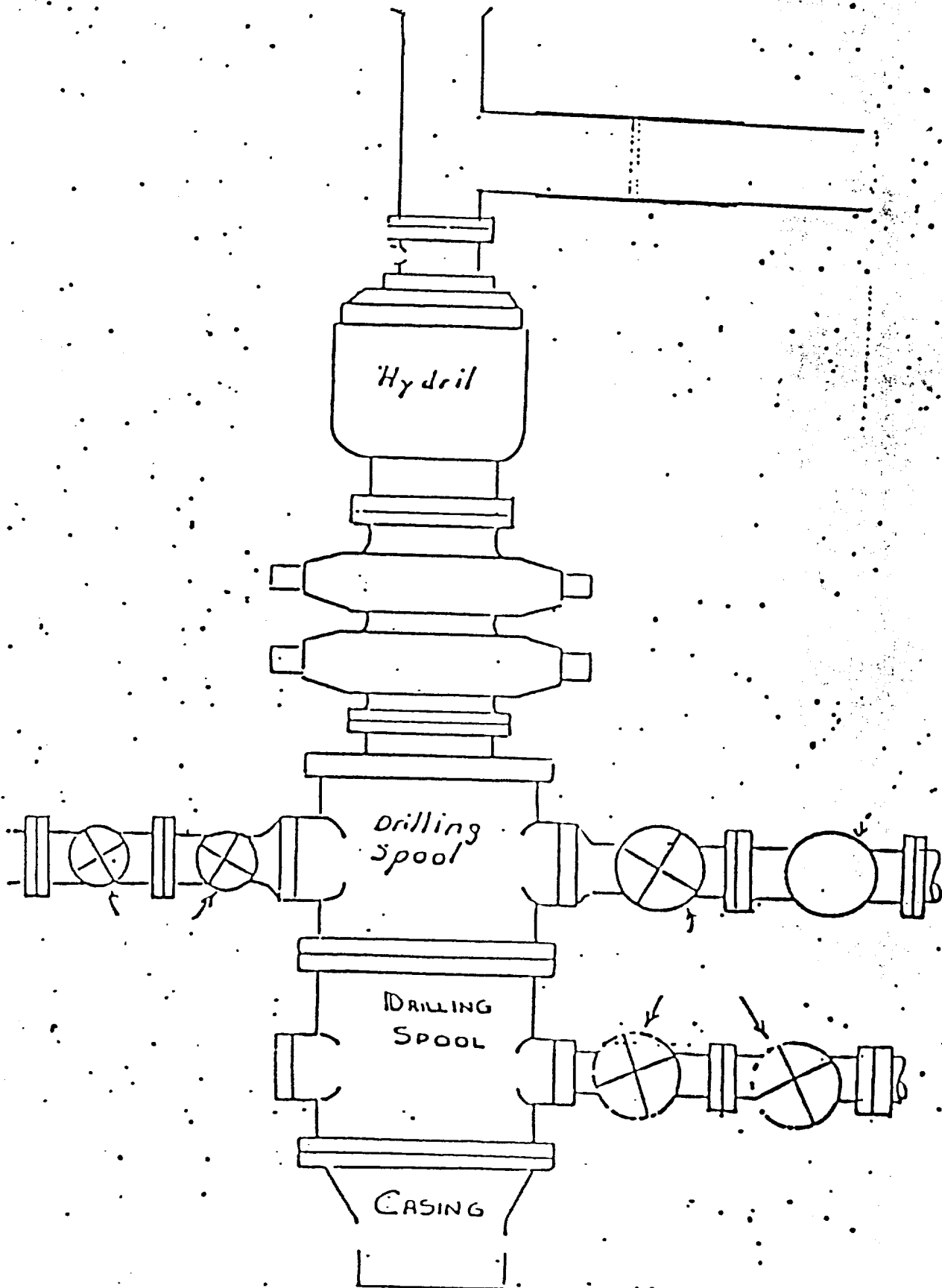
Signature & Seal
Professional Surveyor



Certificate

V. LYNN BEZNER, No. 7920

LOP STACK



[illegible]

CONTOUR INTERVAL 10'

LONG: W 104°03'17"



Review this plot and notify us immediately of any possible discrepancy.

Surveying & Mapping for the Oil & Gas Industry

215 E. TRAVIS
MARSHALL, TX 75670
(214) 938-9602