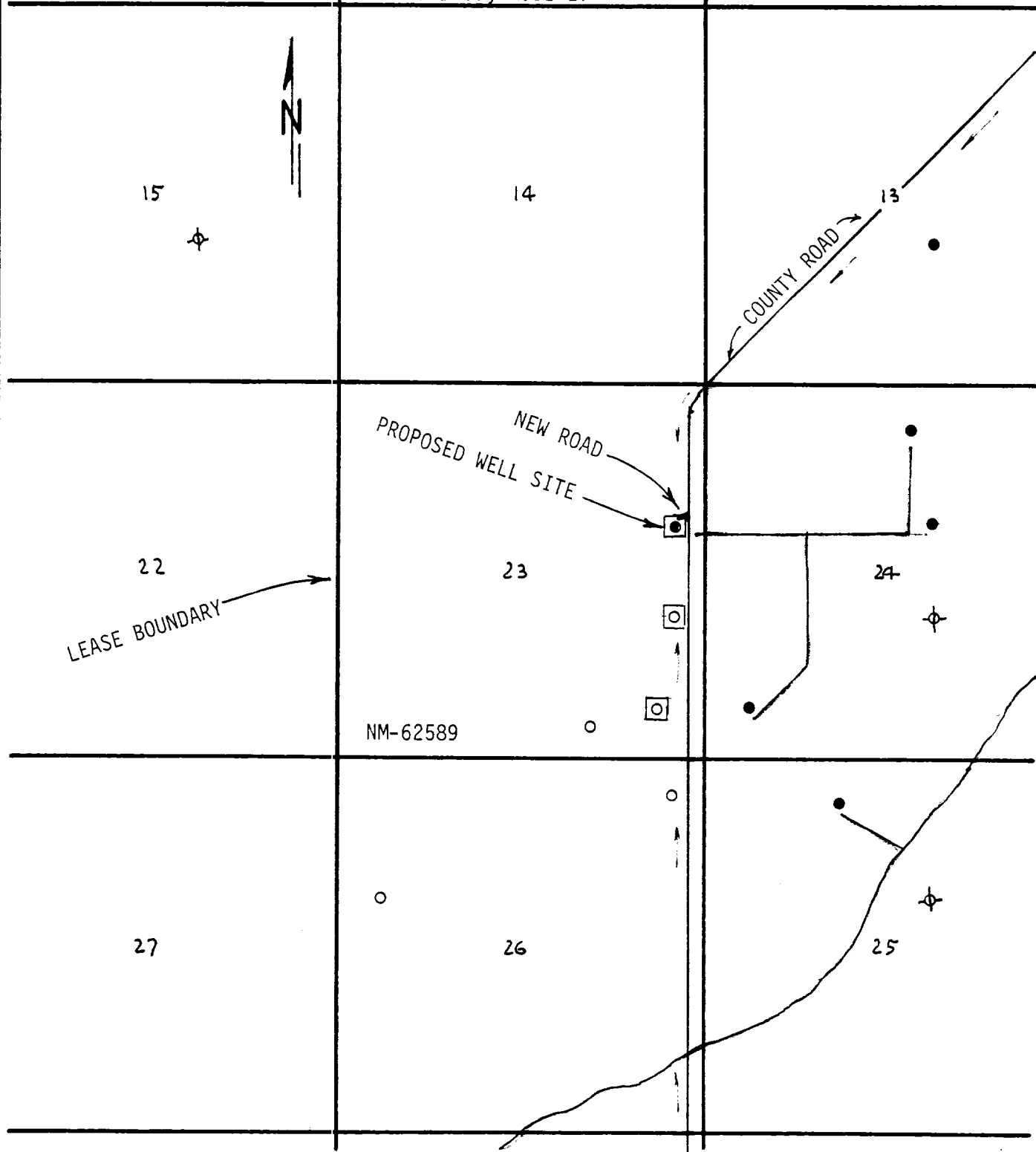


T.22 S., R.31 E.



LEGEND:

- Oil Well
- ⊕ Plugged Well
- Proposed Well
- Existing County Maintained Road
- Existing Caliche Road
- Proposed New Road

EXHIBIT "B"

POGO PRODUCING COMPANY  
 WELL NO.3 FEDERAL 23  
 1980'FNL & 470'FEL SEC.23, T.22 S., R.31 E.  
 EDDY COUNTY, N.M. SCALE: 1" = 2000'