

OIL CONS. COMMISSION
UNITED STATES
DEPARTMENT OF THE INTERIOR
BUREAU OF LAND MANAGEMENT

SUBMIT IN TRIPLICATE*
(Other instructions on
reverse side)

30-015-26799
Form approved.
Budget Bureau No. 1004-0136
Expires August 31, 1985

APPLICATION FOR PERMIT TO DRILL, DEEPEN, OR PLUG BACK

1a. TYPE OF WORK

DRILL ☒

DEEPEN ☐

PLUG BACK ☐

b. TYPE OF WELL

OIL WELL ☒

GAS WELL ☐

OTHER

SINGLE ZONE ☐

MULTIPLE ZONE ☐

2. NAME OF OPERATOR

Yates Petroleum Corporation

RECEIVED

3. ADDRESS OF OPERATOR

105 South Fourth Street, Artesia, NM 88210

JUL 23 1991

4. LOCATION OF WELL (Report location clearly and in accordance with any State requirements.)

At surface

Unit Letter O; 660'FSL & 2310'FEL (SWSE)

At proposed prod. zone

O. C. D.
ARTESIA OFFICE

14. DISTANCE IN MILES AND DIRECTION FROM NEAREST TOWN OR POST OFFICE*

25 miles northeast of Loving, NM

15. DISTANCE FROM PROPOSED*

LOCATION TO NEAREST
PROPERTY OR LEASE LINE, FT.
(Also to nearest drlg. unit line, if any)

330'

16. NO. OF ACRES IN LEASE

280

17. NO. OF ACRES ASSIGNED
TO THIS WELL

40

18. DISTANCE FROM PROPOSED LOCATION*
TO NEAREST WELL, DRILLING, COMPLETED,
OR APPLIED FOR, ON THIS LEASE, FT.

19. PROPOSED DEPTH

7800'

20. ROTARY OR CABLE TOOLS

Rotary

21. ELEVATIONS (Show whether DF, RT, GR, etc.)

3335' GR

22. APPROX. DATE WORK WILL START*

ASAP

23.

PROPOSED CASING AND CEMENTING PROGRAM Secretary's Potash/ R-111-P Potash

SIZE OF HOLE	SIZE OF CASING	WEIGHT PER FOOT	SETTING DEPTH	QUANTITY OF CEMENT
17 1/2"	13 3/8"	54.5# J-55	310'	Circulate - 500 sacks
11"	8 5/8"	32.0# J-55	3820'	Circulate - 1400 sacks
7 7/8"	5 1/2"	17 & 15.5# J-55	TD	Adequate cover (tie back)

Yates Petroleum Corporation proposes to drill and test the Delaware and intermediate formations. Approximately 310' of surface casing will be set and cement circulated. Approximately 3820' of intermediate casing will be set and cement circulated. If commercial, production casing will be run and cemented with adequate cover, perforated and stimulated as needed for production.

MUD PROGRAM: Native mud to 310'; Brine to 3820'; cut Brine to TD.

BOP PROGRAM: BOP will be installed at the offset and tested daily to good mechanical working order.

IN ABOVE SPACE DESCRIBE PROPOSED PROGRAM: If proposal is to deepen or plug back, give data on present productive zone and proposed new productive zone. If proposal is to drill or deepen directionally, give pertinent data on subsurface locations and measured and true vertical depths. Give blowout preventer program, if any.

24.

SIGNED

Clifton R. May

TITLE

Permit Agent

DATE

6-27-91

(This space for Federal or State office use)

PERMIT NO.

APPROVAL DATE

APPROVED BY

TITLE

DATE

7-22-91

CONDITIONS OF APPROVAL, IF ANY:

APPROVAL SUBJECT TO
GENERAL REQUIREMENTS AND
SPECIAL STIPULATIONS

*See Instructions On Reverse Side

ATTACHED
Title 18 U.S.C. Section 1001, makes it a crime for any person knowingly and willfully to make to any department or agency of the United States any false, fictitious or fraudulent statements or representations as to any matter within its jurisdiction.

Submit to Appropriate
District Office
State Lease - 4 copies
Fee Lease - 3 copies

State of New Mexico
Energy, Minerals and Natural Resources Department

Form C-102
Revised 1-1-89

OIL CONSERVATION DIVISION

DISTRICT I
P.O. Box 1980, Hobbs, NM 88240

P.O. Box 2088
Santa Fe, New Mexico 87504-2088

DISTRICT II
P.O. Drawer DD, Artesia, NM 88210

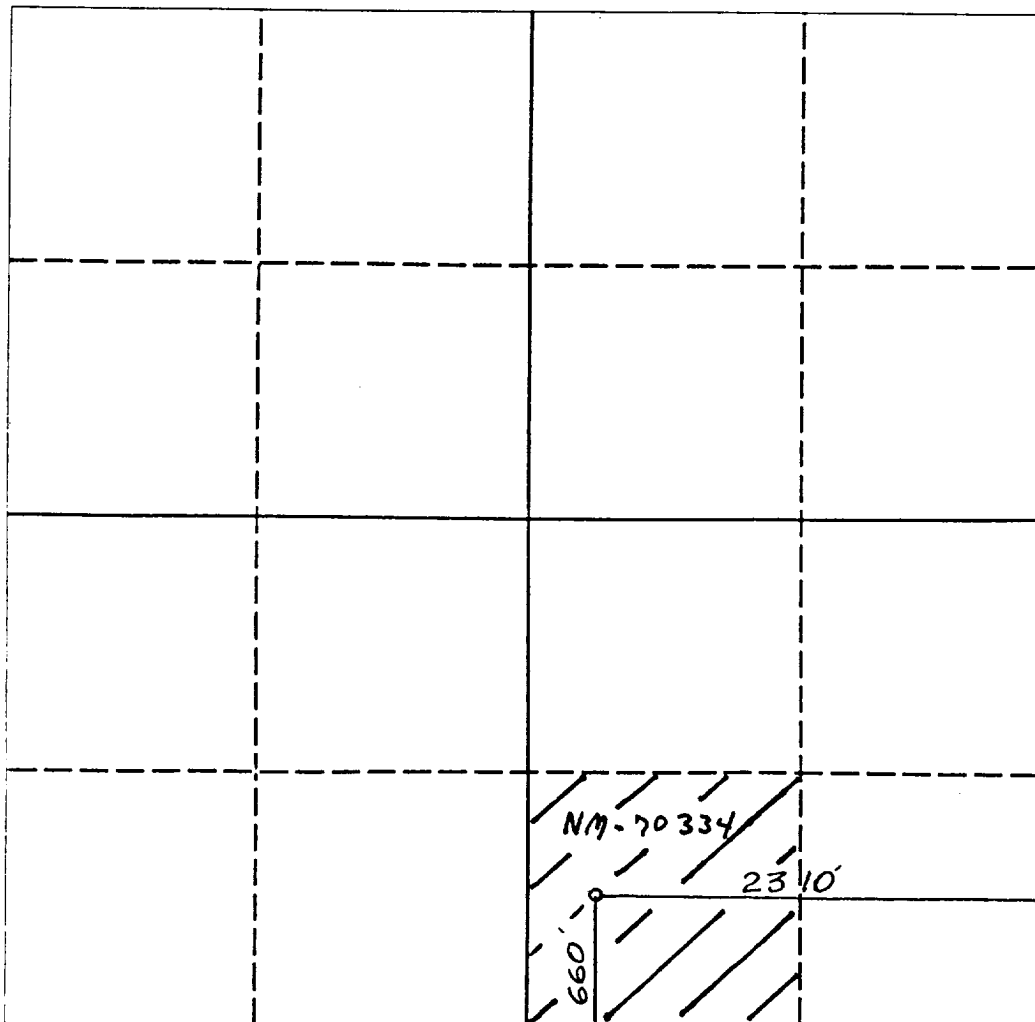
DISTRICT III
1000 Rio Brazos Rd., Aztec, NM 87410

WELL LOCATION AND ACREAGE DEDICATION PLAT

All Distances must be from the outer boundaries of the section

Operator YATES PETROLEUM CORPORATION			Lease JASMINE AJI FEDERAL		Well No. 1
Unit Letter 0	Section 1	Township 22 SOUTH	Range 30 EAST	County EDDY COUNTY, N.M.	
Actual Footage Location of Well: 660 feet from the SOUTH line and 2310 feet from the EAST line					
Ground level Elev. 3335.	Producing Formation DELAWARE		Pool UNDES. CABIN LAKE DELAWARE	Dedicated Acreage: 40 Acres	

- Outline the acreage dedicated to the subject well by colored pencil or hatchure marks on the plat below.
- If more than one lease is dedicated to the well, outline each and identify the ownership thereof (both as to working interest and royalty).
- If more than one lease of different ownership is dedicated to the well, have the interest of all owners been consolidated by communitization, unitization, force-pooling, etc.?
☐ Yes ☐ No If answer is "yes" type of consolidation _____
If answer is "no" list the owners and tract descriptions which have actually been consolidated. (Use reverse side of this form if necessary).
No allowable will be assigned to the well until all interests have been consolidated (by communitization, unitization, forced-pooling, or otherwise) or until a non-standard unit, eliminating such interest, has been approved by the Division.



0 330 660 990 1320 1650 1980 2310 2640 2000 1500 1000 500 0

OPERATOR CERTIFICATION

I hereby certify that the information contained herein is true and complete to the best of my knowledge and belief.

Signature
Clifton R. May
Printed Name
Clifton R. May
Position
Permit Agent
Company
Yates Petroleum Corporation
Date
6-27-91

SURVEYOR CERTIFICATION

I hereby certify that the well location shown on this plat was plotted from field notes of actual surveys made by me or under my supervision, and that the same is true and correct to the best of my knowledge and belief.

Date Surveyed
JUNE 18, 1991
Signature
Professional Surveyor
NEW MEXICO
5412
N.M. PEARS. NO. 5412

YATES PETROLEUM CORPORATION

**Jasmine "AJI" Federal #1
660' FSL and 2310' FEL
Section 1-T22S-R30E
Eddy County, New Mexico**

In conjunction with Form 3160-3, Application for Permit to Drill subject well, Yates Petroleum Corporation submits the following ten items of pertinent information in accordance with USGS requirements.

1. The geological surface formation is Sandy Alluvium:
2. The estimated tops of geologic markers are as follows:

Rustler	310'
Bell Canyon	3,820'
Cherry Canyon	4,760'
Brushy Canyon	6,700'
Bone Springs	7,700'
TD	7,800'

3. The estimated depths at which anticipated water, oil or gas formations are expected to be encountered:

Water:	150'
Oil or Gas:	4760' and 6700'

4. Proposed Casing Program:

<u>Hole Size</u>	<u>O.D.</u>	<u>Weight (lb/ft)</u>	<u>Grade</u>	<u>Type</u>	<u>Setting Depth</u>
17 1/2"	13 3/8"	54.5#	J-55	ST&C	310'
11"	8 5/8"	32.0#	J-55	LT&C	3820'
7 7/8"	5 1/2"	15.5# & 17#	J-55	LT&C	TD

Surface pipe (0' - 310') will be cemented with 300 sacks C-Lite + 2% CaCl + 1/4 lb/sk Celloseal. Yield 1.76 cu.ft./sk. Weight will be 12.9 lb/gal. Tailed in with 200 sacks C with 2% CaCl + 1/4 lb/sk Celloseal. Yield 1.33 cu.ft./sk. Weight will be 14.8 lb/gal. Quantity sufficient to circulate to surface.

Intermediate pipe (0' - 3820') will be cemented with 1200 sacks C-Lite + 10 lbs/sk salt + 1/4 lb/sk Celloseal. Yield 1.94 cu.ft./sk. Weight will be 12.9 lb/gal. Tailed in with 200 sacks C + 1% CaCl. Yield 1.32 cu.ft./sk. Weight will be 13.8 lb/gal. Quantity will be sufficient to circulate to surface.

Production pipe (0' - 7800') will be cemented with 200 sacks (or sufficient to cover zones of interest) Class H + 5 lb. CSE + .7% CF-14 + 10 lb/sk Gilsonite. Yield 1.45 cu.ft./sk. Weight will be 14.4 lb/gal.

5. Pressure Control Equipment: See Form 3160-3 and Exhibit B.
6. Mud Program: See Form 3160-3.
7. Auxiliary Equipment: Kelly Cock; pit level indicators and flow sensor equipment; sub with full-opening valve on floor, drill pipe connections.

8. Testing, Logging and Coring Program:

Samples: Out from under surface casing to TD.

DST's: As warranted.

Coring: None anticipated.

Logging: Dual Induction Laterolog, Gamma Ray/Litho Density, Gamma Ray/Compensated Neutron with Caliper Log.

9. No abnormal pressures or temperatures are anticipated.

10. Anticipated starting date: As soon as possible after approval.

MULTI-POINT SURFACE USE AND OPERATIONS PLAN

Yates Petroleum Corporation

Jasmine "AJI" Federal #1

660' FSL and 2310' FEL

Section 1-T22S-R30E

Eddy County, New Mexico

This plan is submitted with Form 3160-3, Application for Permit to Drill, covering the above described well. The purpose of this plan is to describe the location of the proposed well, the proposed construction activities and operations plan, the magnitude of the surface disturbance involved and the procedures to be followed in rehabilitating the surface after completion of the operations, so that a complete appraisal can be made of the environmental effect associated with the operations.

1. EXISTING ROADS:

Exhibit A is a portion of BLM map showing the well and roads in the vicinity of the proposed location. The proposed wellsite is located approximately 25 miles northeast of Loving, New Mexico and the access route to the location is indicated in red and green on Exhibit A.

DIRECTIONS:

Go out of Carlsbad, New Mexico on Hobbs Highway (62-180) to Road 31. Go south for approximately 8 miles to Cimarron Road (736). Go east approximately 5.5 miles thru cattle guard past ranch house. County Road goes south. Continue east on lease road approximately 1.5 miles (road forks past trailer house). Turn right and go up ridge on road with yellow pipe rails. Continue east approximately .75 of a mile (leave location on ranch road with sign "No Truck Beyond This Point"). New access will start here and go north approximately 1000' to the southeast corner of pad.

Note: Yates Petroleum Corporation is applying for approximately 500' of new off-lease access road and approximately 2.25 miles of existing lease road. (See Exhibit A).

2. PLANNED ACCESS ROAD

- A. The proposed new access will be approximately 1000' in length from point of origin to the southeast edge of the drilling pad. The road will lie in a northerly direction.
- B. The new road will be 14 feet in width (driving surface) and will be adequately drained to control runoff and soil erosion.
- C. The new road will be bladed with drainage on both sides. One traffic turnout will be built.
- D. The route of the road is visible.

3. LOCATION OF EXISTING WELL

- A. There is drilling activity within one-mile radius of the wellsite.
- B. Exhibit D shows existing wells within a one-mile radius of the proposed wellsite.

4. LOCATION OF EXISTING AND/OR PROPOSED FACILITIES

- A. There are production facilities on this lease at the present time.
- B. In the event that the well is productive, the necessary production facilities will be installed on the drilling pad. If the well is productive oil, a gas or diesel self-contained unit will be used to provide the necessary power. No power will be required if the well is productive of gas.

5. LOCATION AND TYPE OF WATER SUPPLY:

- A. It is planned to drill the proposed well with a fresh water system. The water will be obtained from commercial sources and will be hauled to the location by truck over the existing and proposed roads shown in Exhibit A.

6. SOURCE OF CONSTRUCTION MATERIALS:

Request that BLM provide a pit in that area.

7. METHODS OF HANDLING WASTE DISPOSAL:

- A. Drill cuttings will be disposed of in the reserve pits.
- B. Drilling fluids will be allowed to evaporate in the reserve pits until the pits are dry.
- C. Water produced during operations will be collected in tanks until hauled to an approved disposal system, or separate disposal application will be submitted.
- D. Oil produced during operations will be stored in tanks until sold.
- E. Current laws and regulations pertaining to the disposal of human waste will be complied with.
- F. Trash, waste paper, garbage and junk will be buried in a separate trash pit and covered with a minimum of 24 inches of dirt. All waste material will be contained to prevent scattering by the wind.
- G. All trash and debris will be buried or removed from the wellsite within 30 days after finishing drilling and/or completion operations.

8. ANCILLARY FACILITIES:

- A. None required.

9. WELLSITE LAYOUT:

- A. Exhibit C shows the relative location and dimensions of the well pad, the reserve pits, the location of the drilling equipment, rig orientation and access road approach.
- B. The reserve pits will be plastic lined.
- C. A 400' x 400' area has been staked and flagged.

10. PLANS FOR RESTORATION

- A. After finishing drilling and/or completion operations, all equipment and other material not needed for further operations will be removed. The location will be cleaned of all trash and junk to leave the wellsite in as aesthetically pleasing a condition as possible.
- B. Unguarded pits, if any, containing fluids will be fenced until they have dried and been levelled.
- C. If the proposed well is non-productive, all rehabilitation and/or vegetation requirements of the Bureau of Land Management will be complied with and will be accomplished as expeditiously as possible. All pits will be filled level within 90 days after abandonment.

11. SURFACE OWNERSHIP: Federal surface administered by the Bureau of Land Management.

12. OTHER INFORMATION:

- A. Topography: Refer to the existing archaeological report for a description of the topography, flora, fauna, soil characteristics, dwellings, historical and cultural sites.
- B. The primary surface use is for grazing.

13. OPERATOR'S REPRESENTATIVE

A. Through A.P.D. Approval:

Clifton R. May, Permit Agent
Yates Petroleum Corporation
105 South Fourth Street
Artesia, New Mexico 88210
Phone (505) 748-1471

B. Through Drilling Operations,
Completions and Production:

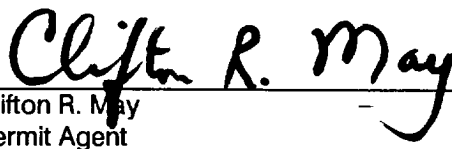
Mike Slater, Operations Manager
Yates Petroleum Corporation
105 South Fourth Street
Artesia, New Mexico 88210
Phone (505) 748-1471

14. CERTIFICATION:

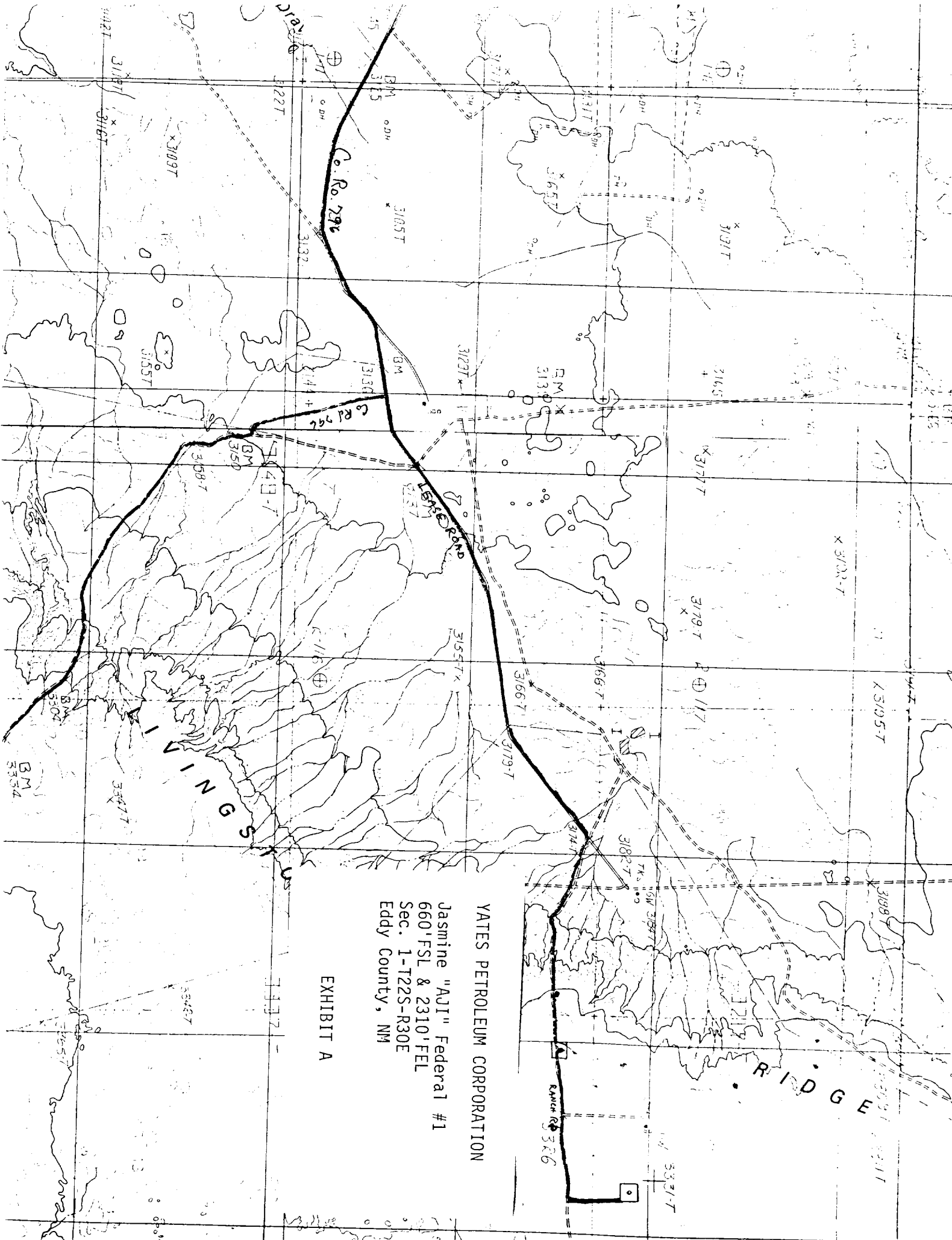
I hereby certify that I, or persons under my direct supervision, have inspected the proposed drillsite and access route, that I am familiar with the conditions which presently exist; that the statements made in this plan are to the best of my knowledge, true and correct; and , that the work associated with the operations proposed herein will be performed by Yates Petroleum Corporation and its contractors and subcontractors in conformity with this plan and the terms and conditions under which it is approved. This statement is subject to the provisions of 18 U.S.C. 1001 for the filing of a false statement.

6-27-91

Date



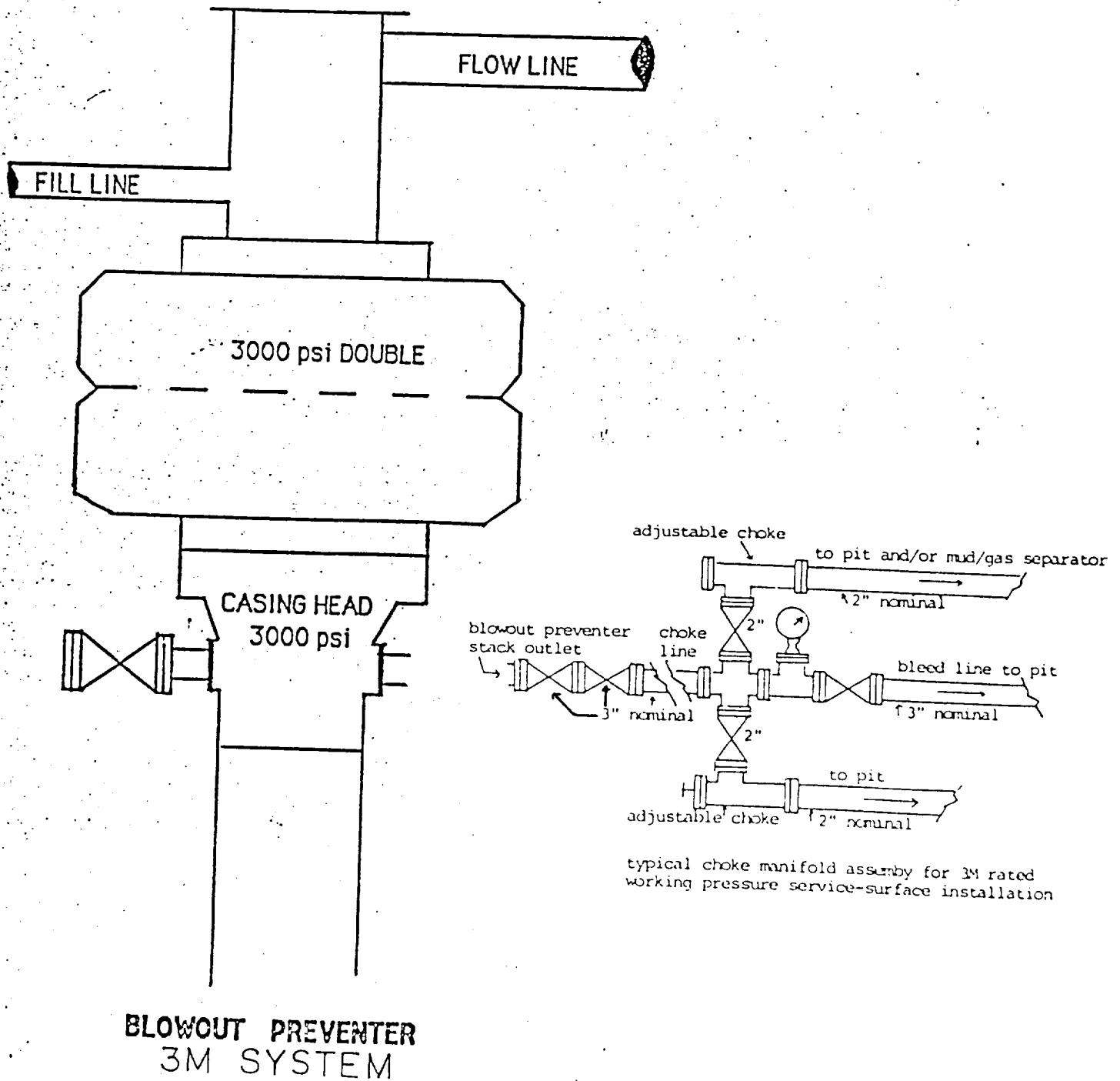
Clifton R. May
Permit Agent



YATES PETROLEUM CORPORATION
Jasmine "AJI" Federal #1
660' FSL & 2310' FEL
Sec. 1-T22S-R30E
Eddy County, NM

EXHIBIT A

YATES PETROLEUM CORPORATION



YATES PETROLEUM CORPORATION

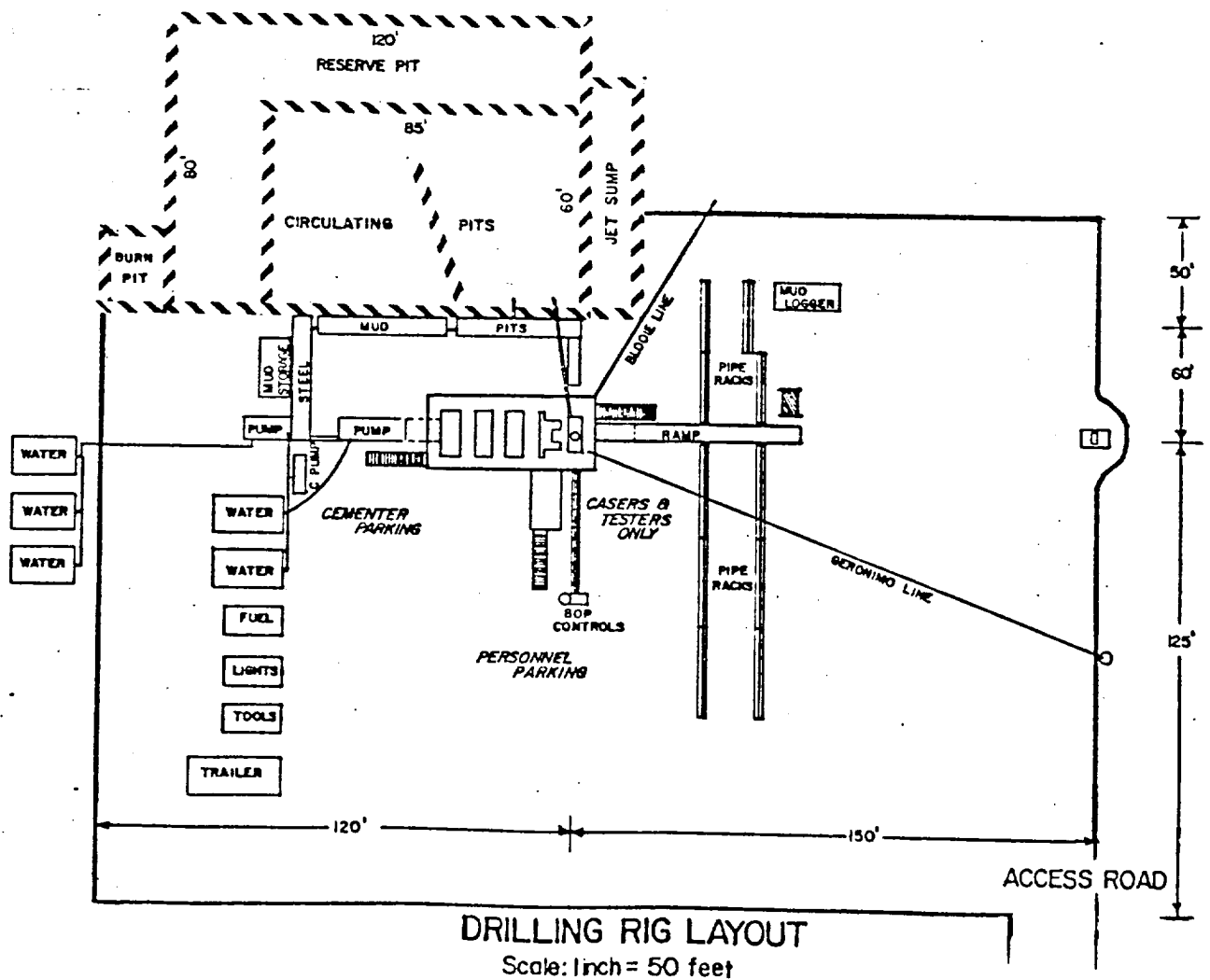


EXHIBIT C

