

UNITED STATES  
DEPARTMENT OF THE INTERIOR  
BUREAU OF LAND MANAGEMENT

SUBMIT IN 1. LOCATE\*  
Other instructions on  
reverse side)

Form approved.  
Budget Bureau No. 1004-0136  
Expires August 31, 1985

30-015-26828

44

APPLICATION FOR PERMIT TO DRILL, DEEPEN, OR PLUG BACK

1a. TYPE OF WORK

DRILL ☒

DEEPEN ☐

PLUG BACK ☐

b. TYPE OF WELL

OIL  
WELL ☒

GAS  
WELL ☐

OTHER

SINGLE  
ZONE ☒

MULTIPLE  
ZONE ☐

2. NAME OF OPERATOR

POGO PRODUCING COMPANY

SEP - 5 1991

3. ADDRESS OF OPERATOR

P.O. BOX 10340, MIDLAND, TEXAS 79702

4. LOCATION OF WELL (Report location clearly and in accordance with any State requirements.)

At surface

2310' FSL AND 1980' FEL OF SECTION 1

At proposed prod. zone

14. DISTANCE IN MILES AND DIRECTION FROM NEAREST TOWN OR POST OFFICE\*

28 MILES EAST OF CARLSBAD, NEW MEXICO

15. DISTANCE FROM PROPOSED\*

LOCATION TO NEAREST  
PROPERTY OR LEASE LINE, FT.  
(Also to nearest drlg. unit line, if any)

330'

16. NO. OF ACRES IN LEASE

647.58

17. NO. OF ACRES ASSIGNED  
TO THIS WELL

40

18. DISTANCE FROM PROPOSED LOCATION\*  
TO NEAREST WELL, DRILLING, COMPLETED,  
OR APPLIED FOR, ON THIS LEASE, FT.

1980'

19. PROPOSED DEPTH

8500'

20. ROTARY OR CABLE TOOLS

ROTARY

21. ELEVATIONS (Show whether DF, RT, GR, etc.)

3584.7 GR

22. APPROX. DATE WORK WILL START\*

UPON APPROVAL

23.

PROPOSED CASING AND CEMENTING PROGRAM

R-111-P Potash

Secretary's Potash

SIZE OF HOLE	SIZE OF CASING	WEIGHT PER FOOT	SETTING DEPTH	QUANTITY OF CEMENT
17-1/2"	13-3/8"	54.5#	800'	SUFFICIENT TO CIRCULATE
11"	8-5/8"	24#, 28#, 32#	4300'	SUFFICIENT TO CIRCULATE
7-7/8"	5-1/2"	15.5# & 17#	8500'	1000 SACKS - SEE STIPS.

AFTER SETTING PRODUCTION CASING, PAY ZONE WILL BE PERFORATED AND  
STIMULATED AS NECESSARY.

SEE ATTACHED FOR: SUPPLEMENTAL DRILLING DATA  
BOP SKETCH  
SURFACE USE AND OPERATIONS PLAN

Post ID-1  
9-13-91  
New Loc & ARE

IN ABOVE SPACE DESCRIBE PROPOSED PROGRAM: If proposal is to deepen or plug back, give data on present productive zone and proposed new productive zone. If proposal is to drill or deepen directionally, give pertinent data on subsurface locations and measured and true vertical depths. Give blowout preventer program, if any.

24.

SIGNED Richard L. Wright TITLE Drilling and Production Supt. DATE August 9, 1991

(This space for Federal or State office use)

PERMIT NO.

APPROVAL DATE

Drig Signed by Richard L. Wright

AREA MANAGER

CARLSBAD RESOURCE AREA

APPROVED BY

TITLE

DATE

9-4-91

CONDITIONS OF APPROVAL, IF ANY:

APPROVAL SUBJECT TO  
GENERAL REQUIREMENTS AND  
SPECIAL STIPULATIONS

ATTACHED

\*See Instructions On Reverse Side

Submit to Appropriate  
District Office  
State Lease - 4 copies  
Fee Lease - 3 copies

State of New Mexico  
Energy, Minerals and Natural Resources Department

Form C-102  
Revised 1-1-89

OIL CONSERVATION DIVISION

DISTRICT I  
P.O. Box 1980, Hobbs, NM 88240

P.O. Box 2088  
Santa Fe, New Mexico 87504-2088

DISTRICT II  
P.O. Drawer DD, Artesia, NM 88210

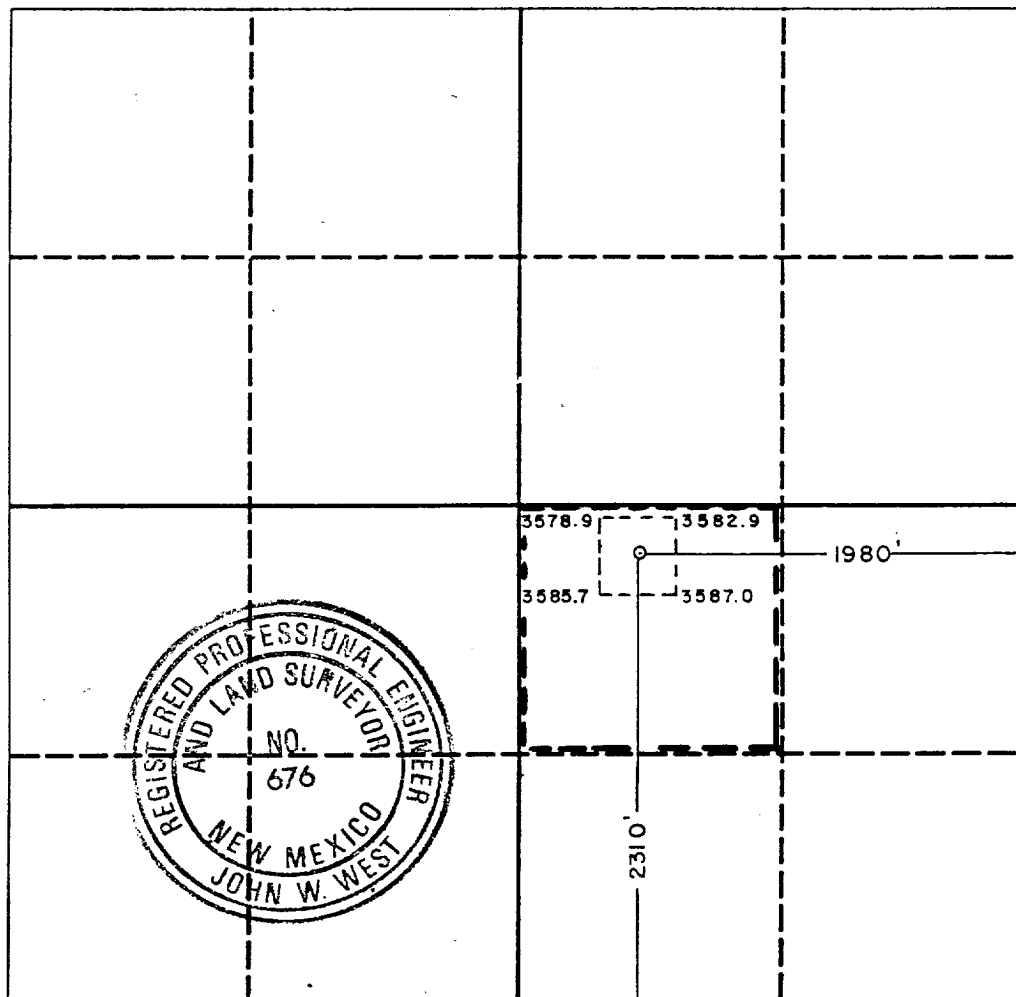
DISTRICT III  
1000 Rio Brazos Rd., Aztec, NM 87410

WELL LOCATION AND ACREAGE DEDICATION PLAT

All Distances must be from the outer boundaries of the section

Operator POGO PRODUCING CO.			Lease FEDERAL 1		Well No. 2
Unit Letter J	Section 1	Township 22 SOUTH	Range 31 EAST	County EDDY	
Actual Footage Location of Well: 2310 feet from the SOUTH line and 1980 feet from the EAST line					
Ground level Elev. 3584.7	Producing Formation DELAWARE (BRUSHY CANYON)		Pool LIVINGSTON RIDGE DELAWARE	Dedicated Acreage: 40 Acres	

1. Outline the acreage dedicated to the subject well by colored pencil or hatchure marks on the plat below.
2. If more than one lease is dedicated to the well, outline each and identify the ownership thereof (both as to working interest and royalty).
3. If more than one lease of different ownership is dedicated to the well, have the interest of all owners been consolidated by communitization, unitization, force-pooling, etc.?  
☐ Yes ☐ No If answer is "yes" type of consolidation \_\_\_\_\_  
If answer is "no" list the owners and tract descriptions which have actually been consolidated. (Use reverse side of this form if necessary).  
No allowable will be assigned to the well until all interests have been consolidated (by communitization, unitization, forced-pooling, or otherwise) or until a non-standard unit, eliminating such interest, has been approved by the Division.



OPERATOR CERTIFICATION

I hereby certify that the information contained herein is true and complete to the best of my knowledge and belief.

Signature  
*Richard L. Wright*

Printed Name  
Richard L. Wright

Position  
Drilling and Production Supt.

Company  
POGO PRODUCING COMPANY

Date  
August 8, 1991

SURVEYOR CERTIFICATION

I hereby certify that the well location shown on this plat was plotted from field notes of actual surveys made by me or under my supervision, and that the same is true and correct to the best of my knowledge and belief.

Date Surveyed  
8-6-91

Signature & Seal of  
Professional Surveyor

Signature  
*Ronald J. Eidson*

Certificate No. JOHN W. WEST, 676  
RONALD J. EIDSON, 3239

## SUPPLEMENTAL DRILLING DATA

### POGO PRODUCING COMPANY

### FEDERAL 1 WELL NO. 2

1. SURFACE FORMATION: Quaternary.

2. ESTIMATED TOPS OF GEOLOGIC MARKERS:

Rustler Anhydrite	750'
Delaware	4450'
Bell Canyon	4550'
Cherry Canyon	5450'
Brushy Canyon	7200'

3. ANTICIPATED POSSIBLE HYDROCARBON BEARING ZONES:

Brushy Canyon	Oil
---------------	-----

4. PROPOSED CASING AND CEMENTING PROGRAM:

13-3/8" 54.5# K-55 ST&C casing is to be set at approximately 800 feet in 17-1/2" hole. Casing to be cemented with 500 sacks of Light cement tailed in with 200 sacks of Class "C" with 2% CaCl. Cement to circulate.

8-5/8" 24#, 28#, and 32# J-55 and S-80 ST&C casing is to be set at approximately 4300 feet in 11" hole. Casing is to be cemented with 1200 sacks of Light cement tailed in with 200 sacks of Class "C" with 1% CaCl. Cement to circulate.

5-1/2" 15.5# and 17# K-55 and N-80 LT&C casing is to be set at 8500 feet in 7-7/8" hole. Casing is to be cemented with 1000 sacks of Class H cement. Cement to tie-back.

5. PRESSURE CONTROL EQUIPMENT:

Blowout prevention equipment, while drilling the 11" hole, will be either a 3000 psi working pressure double ram type preventer or a 3000 psi working pressure annular type preventer.

Blow out prevention equipment, while drilling below the 8-5/8" casing seat, will be a 3000 psi working pressure BOP stack. A BOP sketch is attached.

6. CIRCULATING MEDIUM:

Surface to 800 feet: Fresh water spud mud. Viscosity 30 to 36 as required for hole cleaning.

800 feet to 4300 feet: Brine conditioned as necessary for control of viscosity. Weight 9.8 to 10. pH 9 to 10. Viscosity 32 to 36.

4300 feet to T.D.: Water base drilling fluid conditioned as necessary for control of weight, viscosity, pH and water-loss. Weight 9 to 10. Viscosity 38-45. pH 9 to 10. Filtrate while drilling pay zone 6 to 15.

7. AUXILIARY EQUIPMENT:

A mud logging trailer will be in use while drilling below the intermediate casing.

8. TESTING, LOGGING, AND CORING PROGRAMS:

No drill stem tests are planned.

Compensated Neutron - Litho Density Log and Phasor Induction Log/GR from total depth back to intermediate casing. Gamma Ray log will be continued back to surface.

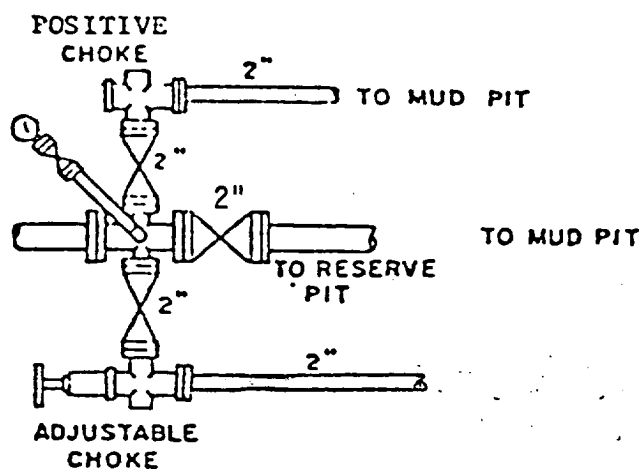
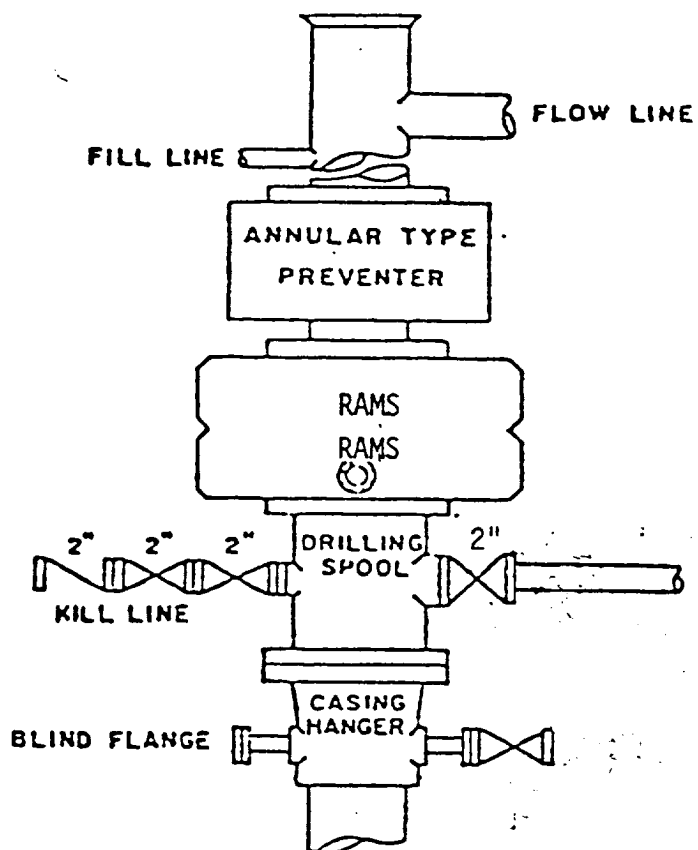
No coring is planned.

9. ABNORMAL PRESSURES, TEMPERATURES, OR HYDROGEN SULFIDE GAS:

None anticipated.

10. ANTICIPATED STARTING DATE:

It is planned that operations will commence upon approval of this application, with drilling and completion operations lasting about 45 days.



BOP STACK

3000 PSI WORKING PRESSURE

BOP ARRANGEMENT