

Submit to Appropriate
District Office
State Lease - 6 copies
Fee Lease - 5 copies

State of New Mexico
Energy, Minerals and Natural Resources Department

Form C-101
Revised 1-1-89

OIL CONSERVATION DIVISION

DISTRICT I
P.O. Box 1980, Hobbs, NM 88240

DISTRICT II
P.O. Drawer DD, Artesia, NM 88210

DISTRICT III
1000 Rio Brazos Rd., Aztec, NM 87410

P.O. Box 2088
Santa Fe, New Mexico 87504-2088

OCT 15 1991

O. C. D.

API NO. (assigned by OCD on New Wells)

30-015-26843

5. Indicate Type of Lease

STATE ☐

FEE ☒

6. State Oil & Gas Lease No.

APPLICATION FOR PERMIT TO DRILL, DEEPEN, OR PLUG BACK

1a. Type of Work:

DRILL ☒

RE-ENTER ☐

DEEPEN ☐

PLUG BACK ☐

b. Type of Well:

OIL
WELL ☒

GAS
WELL ☐

OTHER ☐

SINGLE
ZONE ☒

MULTIPLE
ZONE ☐

7. Lease Name or Unit Agreement Name

Pardue Farms 27

2. Name of Operator

Parker & Parsley Development Company ✓

8. Well No.

9

3. Address of Operator

P.O. Box 3178, Midland, Texas 79702

9. Pool name or Wildcat

✓ East Loving Delaware

4. Well Location

Unit Letter G : 2080 Feet From The East Line and 1880 Feet From The North Line

Section 27 Township 23S Range 28E NMPM Eddy County

10. Proposed Depth

6800'

11. Formation

Brushy Canyon

12. Rotary or C.T.

Rotary

13. Elevations (Show whether DF, RT, GR, etc.)

3044 GR

14. Kind & Status Plug. Bond

Blanket Bond

15. Drilling Contractor

N/A

16. Approx. Date Work will start

ASAP

17. PROPOSED CASING AND CEMENT PROGRAM

SIZE OF HOLE	SIZE OF CASING	WEIGHT PER FOOT	SETTING DEPTH	SACKS OF CEMENT	EST. TOP
12-1/4"	8-5/8"	24	500	475	Surface
7-7/8"	4-1/2"	11.6	6800	875	2300'

BOP's - 500' to 6800': 10" 3000 psi double ram preventers.

Post IO-1
10-25-91
New Loc + API

APPROVAL VALID FOR 180 DAYS
PERMIT EXPIRES 9/24/92
UNLESS DRILLING UNDERWAY

IN ABOVE SPACE DESCRIBE PROPOSED PROGRAM: IF PROPOSAL IS TO DEEPEN OR PLUG BACK, GIVE DATA ON PRESENT PRODUCTIVE ZONE AND PROPOSED NEW PRODUCTIVE ZONE. GIVE BLOWOUT PREVENTER PROGRAM, IF ANY.

I hereby certify that the information above is true and complete to the best of my knowledge and belief.

SIGNATURE

Randy R. Johnson

TITLE Sr. Operations Engineer

DATE 10/11/91

TYPE OR PRINT NAME

Randy R. Johnson

915-683-4768
TELEPHONE NO.

(This space for State Use)

ORIGINAL SIGNED BY
MIKE WILLIAMS
SUPERVISOR, DISTRICT II

APPROVED BY

TITLE

DATE

OCT 24 1991

CONDITIONS OF APPROVAL, IF ANY:

Submit to Appropriate
District Office
State Lease - 4 copies
Fee Lease - 3 copies

State of New Mexico
Energy, Minerals and Natural Resources Department

Form C-102
Revised 1-1-89

OIL CONSERVATION DIVISION

P.O. Box 2088
Santa Fe, New Mexico 87504-2088

DISTRICT I
P.O. Box 1980, Hobbs, NM 88240

DISTRICT II
P.O. Drawer DD, Artesia, NM 88210

DISTRICT III
1000 Rio Brazos Rd., Aztec, NM 87410

WELL LOCATION AND ACREAGE DEDICATION PLAT

All Distances must be from the outer boundaries of the section

Operator PARKER & PARSLEY PETROLEUM CO.			Lease PARDUE FARMS 27-9		Well No. 9
Unit Letter G	Section 27	Township 23 SOUTH	Range 28 EAST	County EDDY COUNTY, N.M.	
Actual Footage Location of Well: 2080 feet from the EAST line and 1880 feet from the NORTH line					
Ground level Elev. 3044.	Producing Formation Brushy Canyon		Pool East Loving Delaware	Dedicated Acreage: 40 Acres	

1. Outline the acreage dedicated to the subject well by colored pencil or hatchure marks on the plat below.

2. If more than one lease is dedicated to the well, outline each and identify the ownership thereof (both as to working interest and royalty).

3. If more than one lease of different ownership is dedicated to the well, have the interest of all owners been consolidated by communization, unitization, force-pooling, etc.?

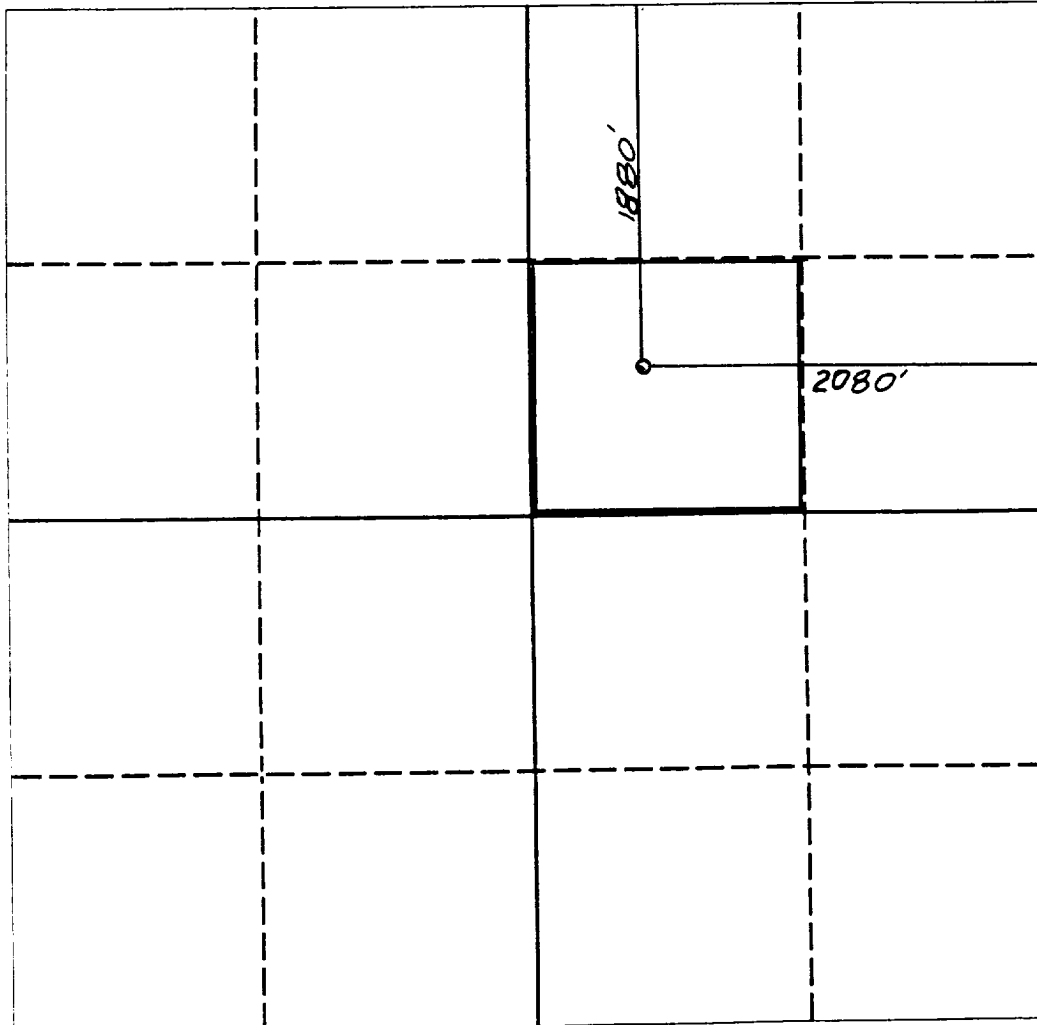
☒ Yes

☐ No

If answer is "yes" type of consolidation Designation of pooled or unitized area

If answer is "no" list the owners and tract descriptions which have actually been consolidated. (Use reverse side of this form if necessary.)

No allowable will be assigned to the well until all interests have been consolidated (by communization, unitization, forced-pooling, or otherwise) or until a non-standard unit, eliminating such interest, has been approved by the Division.



OPERATOR CERTIFICATION

I hereby certify that the information contained herein is true and complete to the best of my knowledge and belief.

Signature

Randy R. Johnson

Printed Name

Randy R. Johnson

Position

Sr. Operations Engineer

Company

Parker & Parsley Dev. Co.

Date

10/11/91

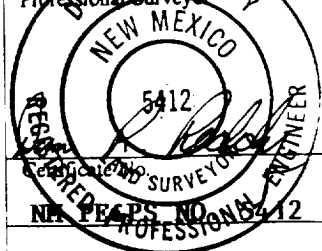
SURVEYOR CERTIFICATION

I hereby certify that the well location shown on this plat was plotted from field notes of actual surveys made by me or under my supervision, and that the same is true and correct to the best of my knowledge and belief.

Date Surveyed

AUGUST 21, 1991

Signature & Seal of Professional Surveyor



0 330 660 990 1320 1650 1980 2310 2640 2000 1500 1000 500 0

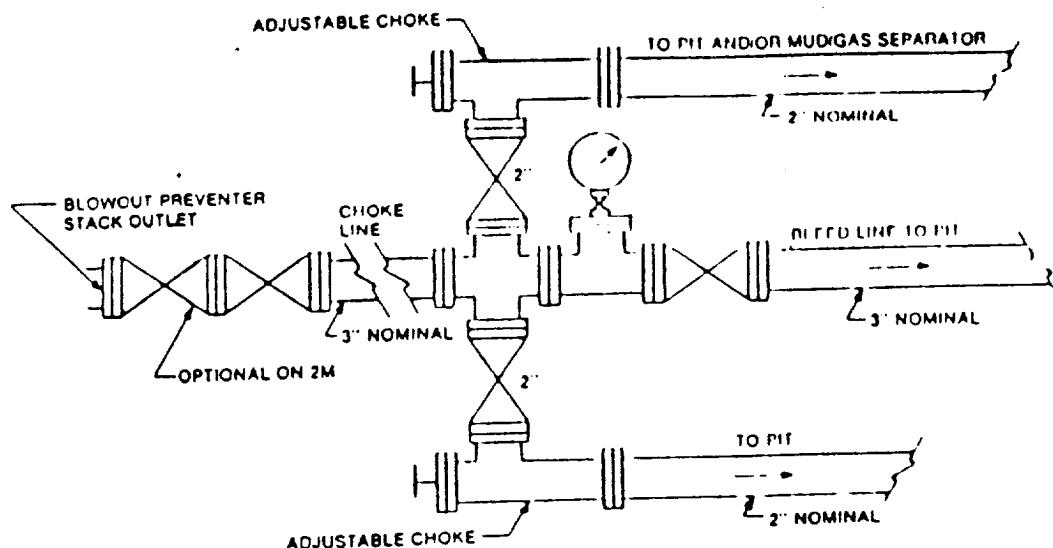


FIGURE K4-1. Typical choke manifold assembly for working pressure service — surface installation.

3M rated

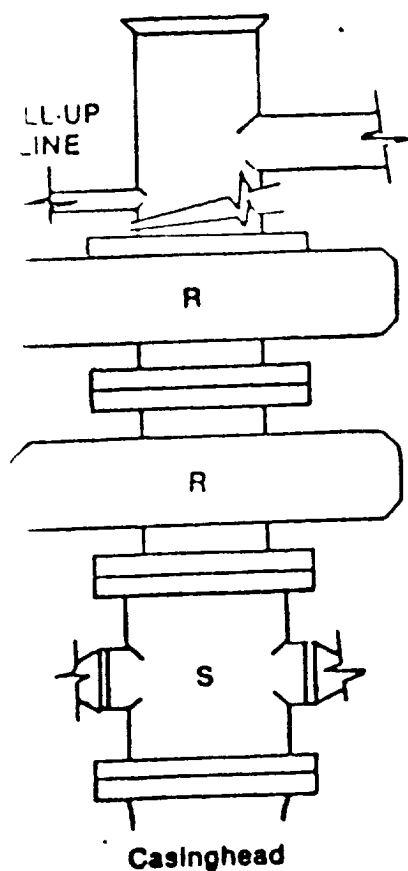


FIGURE K1-1. Recommended IADC Class 2 BOP stack; 3000 psi WP. Either SRd (left) or SA (right) arrangement is acceptable and drilling spool is optional.