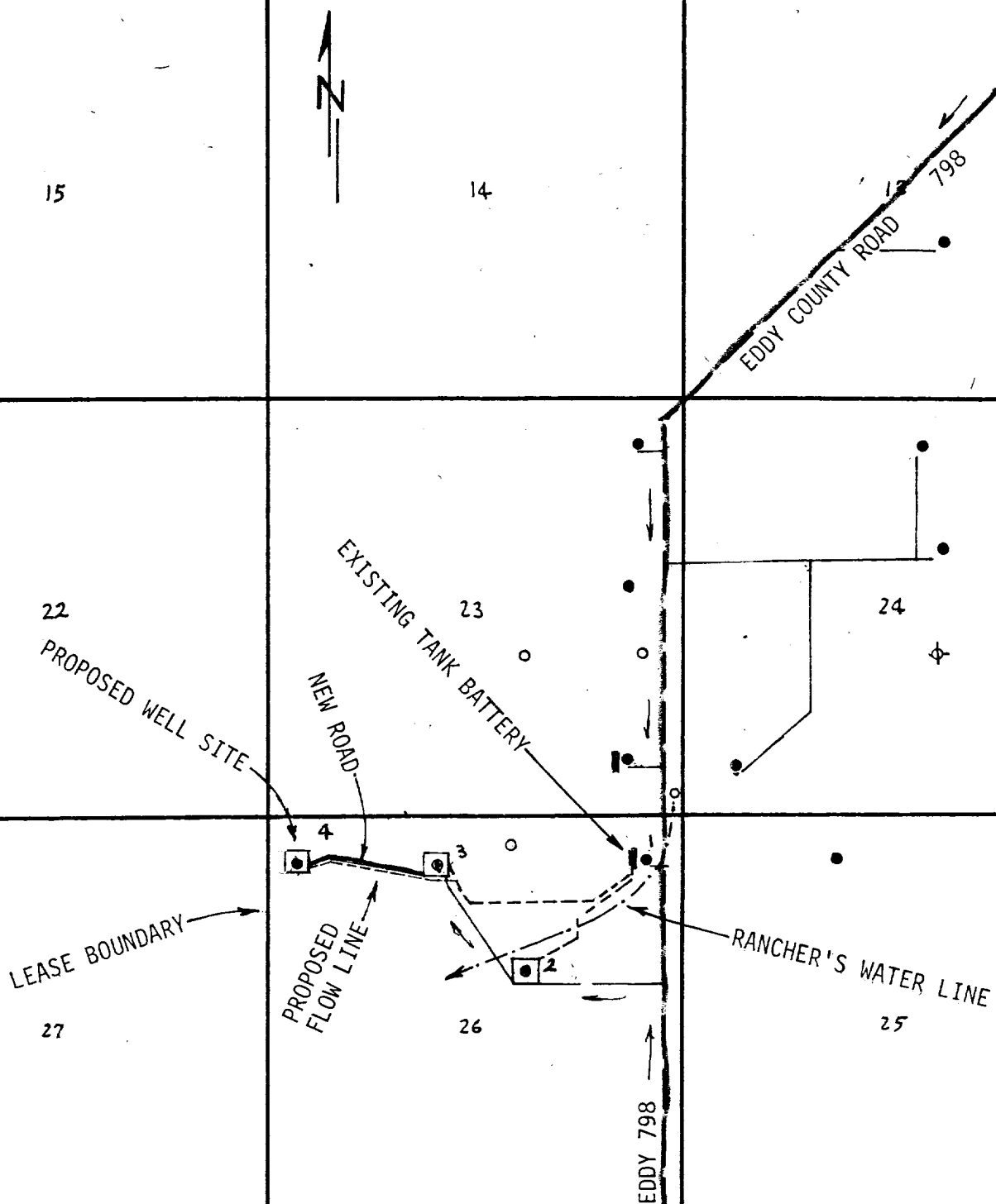


T.22 S., R.31 E.



LEGEND:

- Oil Well
- Proposed Well
- Existing County Road
- Existing Caliche Road
- Proposed New Road
- - - Flow Line

EXHIBIT "B"

POGO PRODUCING COMPANY  
FEDERAL 26 WELL NO.4  
600'FNL & 330'FWL SEC.26, T.22 S., R.31 E.  
EDDY COUNTY, N.M. SCALE: 1" = 2000'