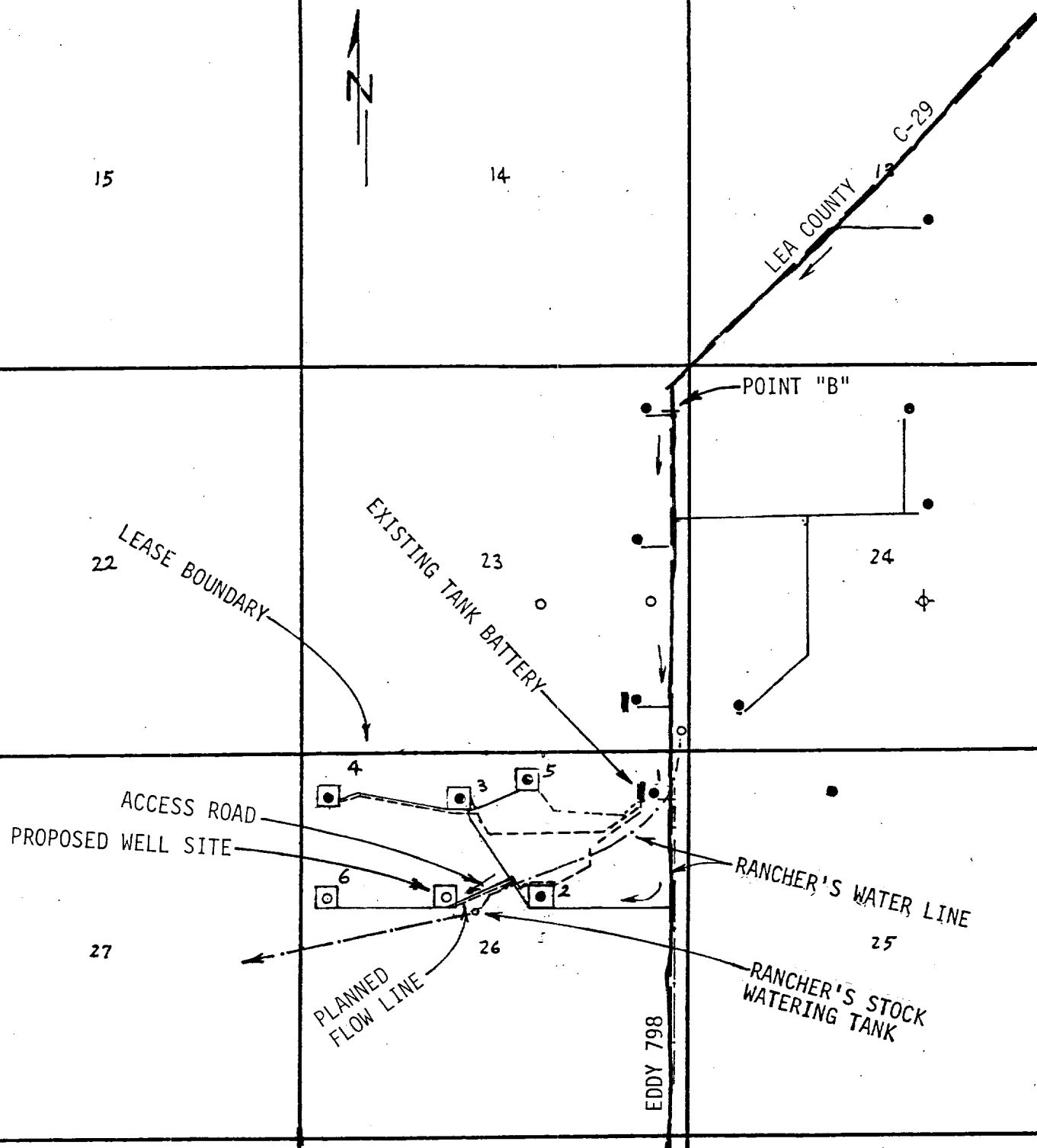


T.22 S., R.31 E.



LEGEND:

- Oil Well
- Proposed Well
- Existing County Road
- Existing Caliche Road
- - - - - Flow Line

EXHIBIT "B"

POGO PRODUCING COMPANY
FEDERAL 26 WELL NO.7
1980' FNL & 1980' FWL SEC.26, T.22 S., R.31 E.
EDDY COUNTY, N.M. SCALE: 1" = 2000'