

Submit to Appropriate
District Office
State Lease - 6 copies
Fee Lease - 5 copies

State of New Mexico
Energy, Minerals and Natural Resources Department

Form C-101
Revised 1-1-89

OIL CONSERVATION DIVISION

DISTRICT I
P.O. Box 1980, Hobbs, NM 88240

DISTRICT II
P.O. Drawer DD, Artesia, NM 88210

DISTRICT III
1000 Rio Brazos Rd., Aztec, NM 87410

P.O. Box 2088
Santa Fe, New Mexico 87504-2088

RECEIVED
FEB 17 1992

O. C. D.

API NO. (assigned by OCD on New Wells)

30-015-26954

5. Indicate Type of Lease

STATE ☐

FEE ☒

6. State Oil & Gas Lease No.

7. Lease Name or Unit Agreement Name

31
Harroun Trust Fed Com ~~31~~

8. Well No.

1

9. Pool name or Wildcat

South Culebra Bluff (Atoka)

APPLICATION FOR PERMIT TO DRILL, DEEPEN, OR PLUG BACK

1a. Type of Work:

DRILL ☒

RE-ENTER ☐

DEEPEN ☐

PLUG BACK ☐

b. Type of Well:

OIL

GAS

WELL ☐

WELL ☒

OTHER

SINGLE
ZONE ☐

MULTIPLE
ZONE ☐

2. Name of Operator

Santa Fe Energy Operating Partners, L.P.

3. Address of Operator

550 W. Texas, Suite 1330, Midland, Texas 79701

4. Well Location

Unit Letter

L

: 660

Feet From The West

Line and

1980

Feet From The

South

Line

Section

31

Township

23S

Range

29E

NMPM

Eddy

County

10. Proposed Depth

12,300'

11. Formation

Atoka Bank & Sand

12. Rotary or C.T.

Rotary

13. Elevations (Show whether DF, RT, GR, etc.)

2962.4' GR

14. Kind & Status Plug. Bond

Blanket - current

15. Drilling Contractor

To be selected

16. Approx. Date Work will start

March 30, 1992

17.

PROPOSED CASING AND CEMENT PROGRAM

SIZE OF HOLE	SIZE OF CASING	WEIGHT PER FOOT	SETTING DEPTH	SACKS OF CEMENT	EST. TOP
17-1/2"	13-3/8"	48.0	600'	650	Surface
12-1/4"	9-5/8"	36.0	2600'	1600	Surface
8-3/4"	7"	26.0	10,000'	800	6000'
6-1/8"	4 1/2" Liner	13.50	9700'-12,300'	350	Line Top

Move in & rig up rotary tools. Drill 17 1/2" hole to 600'. Run 13-3/8" casing and cement w/ 650 sx Cl C + 2% CaCl₂. WOC 12 hours and NU diverter w/ 1 annular preventer, test casing to 600 psi. Drill 12 1/4" hole to 2600'. Run 9-5/8" casing. Cement w/ 1300 sx Cl C Lite + 5% salt and tail-in w/ 300 sx Cl C + 2% CaCl₂. WOC 12 hours and NU 10M WP triple ram BOP w/ hydril. Pressure test casing to 1500 psi. Pressure test BOP to 1500 psi. Drill 8-3/4" hole to 10,000'. Log and run 7" casing. Cement w/ 800 sx Cl H 50/50 POZ + 6 pps salt, if a productive Delaware zone is present, will cover it w/ cement. Install rotating head and test BOP stack to 10,000 psi. Test casing to 3000 psi. Drill shoe and 10' of formation. Test formation to 13.0 ppg mud weight equivalent. Drill 6-1/8" hole to 12,300', log. Either P&A or run 4-1/2" liner and cement w/ 350 sx Cl H containing 0.6% friction reducer, 0.4% fluid loss additive, 5# KCl per sack.

IN ABOVE SPACE DESCRIBE PROPOSED PROGRAM: IF PROPOSAL IS TO DEEPEN OR PLUG BACK, GIVE DATA ON PRESENT PRODUCTIVE ZONE AND PROPOSED NEW PRODUCTIVE ZONE. GIVE BLOWOUT PREVENTER PROGRAM, IF ANY.

I hereby certify that the information above is true and complete to the best of my knowledge and belief.

SIGNATURE

Darrell Roberts

TITLE

Senior Drilling Engineer

DATE Feb. 13, 1992

TYPE OR PRINT NAME

Darrell Roberts

915/

TELEPHONE NO. 687-3551

(This space for State Use)

ORIGINAL SIGNED BY
MIKE WILLIAMS

SUPERVISOR, DISTRICT I

APPROVED BY

TITLE

DATE

FEB 20 1992

CONDITIONS OF APPROVAL, IF ANY:

Submit to Appropriate
District Office
State Lease - 4 copies
Fee Lease - 3 copies

State of New Mexico
Energy, Minerals and Natural Resources Department

Form C-102
Revised 1-1-89

OIL CONSERVATION DIVISION

P.O. Box 2088
Santa Fe, New Mexico 87504-2088

DISTRICT I

P.O. Box 1980, Hobbs, NM 88240

DISTRICT II

P.O. Drawer DD, Artesia, NM 88210

DISTRICT III

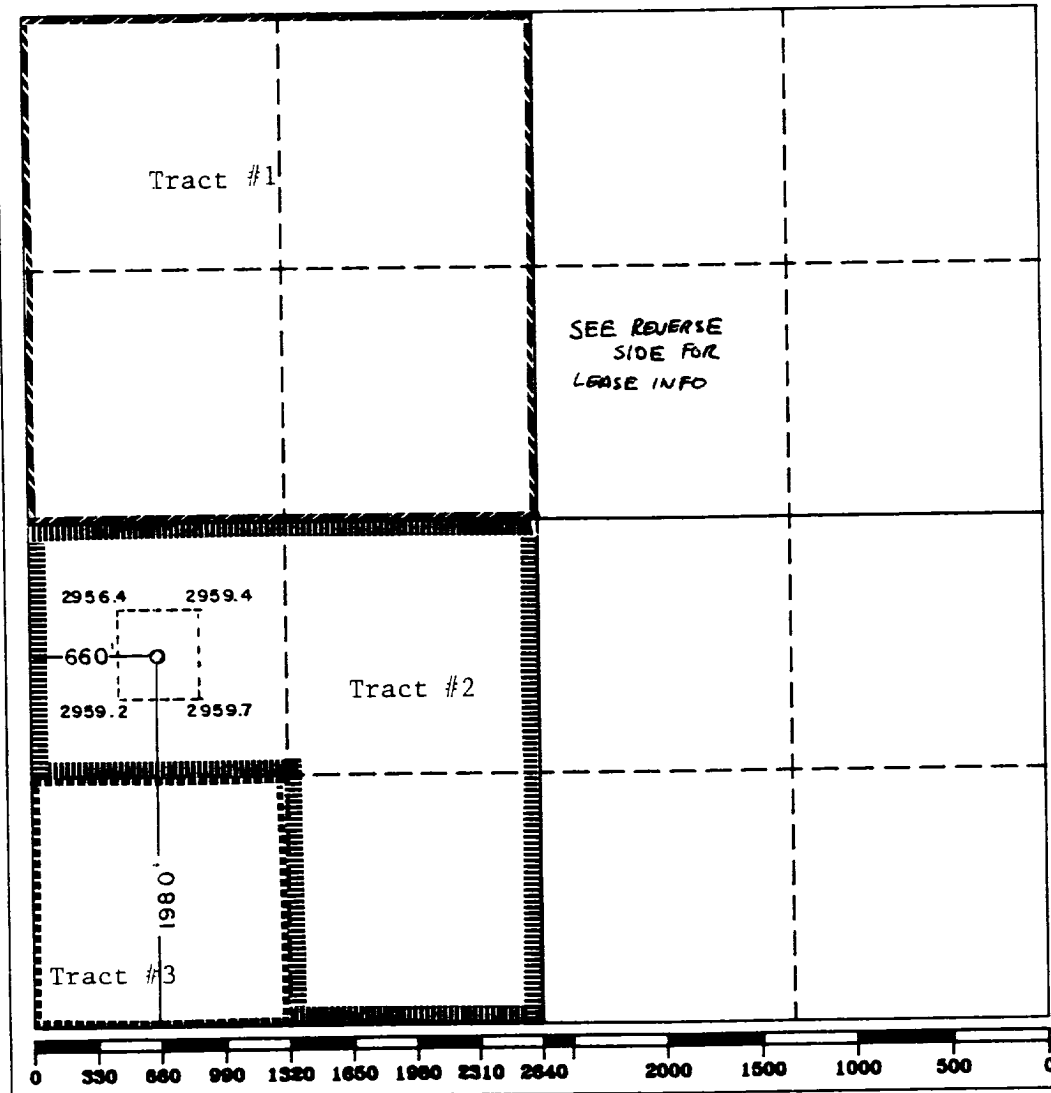
1000 Rio Brazos Rd., Artesia, NM 87410

WELL LOCATION AND ACREAGE DEDICATION PLAT

All Distances must be from the outer boundaries of the section

Operator Santa Fe Energy Operating Partners LP			Lease Harroun Trust Fed. Com. 31		Well No. 1
Unit Letter L	Section 31	Township 23 South	Range 29 East	County NMPM	Eddy
Actual Footage Location of Well: 660 feet from the West line and 1980 feet from the South line					
Ground Level Elev. 2962.4	Producing Formation Atoka	Pool South Culebra Bluff (Atoka)	Dedicated Acreage: 317.28 Acres		

- Outline the acreage dedicated to the subject well by colored pencil or hatchure marks on the plat below.
 - If more than one lease is dedicated to the well, outline each and identify the ownership thereof (both as to working interest and royalty).
 - If more than one lease of different ownership is dedicated to the well, have the interest of all owners been consolidated by communitization, unitization, force-pooling, etc.?
☐ Yes ☒ No If answer is "yes" type of consolidation Will be consolidated by communitization
- If answer is "no" list of owners and tract descriptions which have actually been consolidated. (Use reverse side of this form necessary.)
No allowable will be assigned to the well unit all interests have been consolidated (by communitization, unitization, forced-pooling, otherwise) or until a non-standard unit, eliminating such interest, has been approved by the Division.



OPERATOR CERTIFICATION

I hereby certify the information contained herein is true and complete to the best of my knowledge and belief.

Signature
Darrell Roberts
Printed Name
Darrell Roberts
Position
Sr. Drilling Engineer
Company
Santa Fe Energy Operating Partners, L.P.
Date
February 13, 1992

SURVEYOR CERTIFICATION

I hereby certify that the well location shown on this plat was plotted from field notes of actual surveys made by me or under my supervision, and that the same is true and correct to the best of my knowledge and belief.

Date Surveyed
February 6, 1992
Signature & Seal of Professional Surveyor
Ronald J. Jones
No. 10002
Certification No. 10002
RONALD J. JONES
W.O. 92-11-0151

Tract #1
(W/2 NW)
Lots 1, 2 & E/2 NW/4,
Sec. 31, (158.28 acres)

<u>WI Ownership</u>	<u>WI Percentage</u>
SFEOP,LP	50%
CNG Producing Co.	33%
Fortson Oil & Gas	17%
	<u>100%</u>
<u>Royalty Ownership</u>	<u>Royalty Percentage</u>
Carlsbad Nation Bank	20%
Trustee of M.V. Geer	
Kenocable Trust	

Tract #2
(NESW)
Lot 3 of E/2 SW/4,
Sec. 31, (119.41 acres)

<u>WI Ownership</u>	<u>WI Percentage</u>
Texaco Producing, Inc.	71.144185%
Amoco Production Co.	12.900394%
Quinoco Consolidated	4.647414%
Concise Oil & Gas	4.647414%
El Paso Natl Gas	1.567484%
Meridian Oil Prod	1.567484%
Roden Participation,Ltd	1.602557%
Roden Exploration Co.	1.602557%
Roden Associates, Inc.	0.320511%
	<u>100%</u>
<u>Royalty Ownership</u>	<u>Royalty Percentage</u>
D. Stewart, Jr.,	18.75%
Trustee et al	

Tract #3 (NM-82886)
Lot 4 (SWSW), Sec. 31
(39.59 acres)

<u>WI Ownership</u>	<u>WI Percentage</u>
SFEOP,LP	50%
CNG Producing Co.	33%
Fortson Oil & Gas	17%
	<u>100%</u>
<u>Royalty Ownership</u>	<u>Royalty Percentage</u>
USA (NM-82886)	12.5%