

UNITED STATES  
DEPARTMENT OF THE INTERIOR  
BUREAU OF LAND MANAGEMENT

RECEIVED  
SUBMITTAL TO BUREAU OF LAND MANAGEMENT  
(Other instructions on reverse side)

JUN - 5 1992

30-015-27026  
Form approved.  
Budget Bureau No. 1004-0136  
Expires August 31, 1985

APPLICATION FOR PERMIT TO DRILL, DEEPEN, OR PLUG BACK

1a. TYPE OF WORK  
DRILL ☒ DEEPEN ☐ PLUG BACK ☐

b. TYPE OF WELL  
OIL WELL ☒ GAS WELL ☐ OTHER ☐  
SINGLE ZONE ☒ MULTIPLE ZONE ☐

2. NAME OF OPERATOR  
Ray Westall

3. ADDRESS OF OPERATOR  
Box 4, Loco Hills, NM 88255

4. LOCATION OF WELL (Report location clearly and in accordance with any State requirements.)  
At surface 1946 FSL & 626 FEL

At proposed prod. zone Same

14. DISTANCE IN MILES AND DIRECTION FROM NEAREST TOWN OR POST OFFICE\*  
12 miles SE of Carlsbad NM

16. DISTANCE FROM PROPOSED\* LOCATION TO NEAREST PROPERTY OR LEASE LINE, FT.  
(Also to nearest drlg. unit line, if any) 626'

18. DISTANCE FROM PROPOSED LOCATION\* TO NEAREST WELL, DRILLING, COMPLETED, OR APPLIED FOR, ON THIS LEASE, FT. 2000

21. ELEVATIONS (Show whether DF, RT, GR, etc.)

3107 gr.

23. PROPOSED CASING AND CEMENTING PROGRAM

| SIZE OF HOLE | SIZE OF CASING | WEIGHT PER FOOT | SETTING DEPTH |
|--------------|----------------|-----------------|---------------|
| 13 3/8"      | 8 5/8"         | 24#             | 450           |
| 7 7/8"       | 5 1/2"         | 15.5            | 6400          |

Carlsbad Controlled Water Basin

QUANTITY OF CEMENT  
400 sxs circulated  
1500 sxs circulated

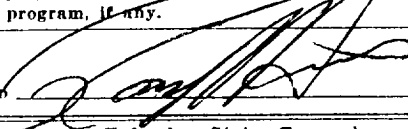
We propose to drill surface to 450' using fresh water

450-TD with cut brine

A series 900 BOP will be installed on 8 5/8" casing and tested to 5000# prior to drilling the Delaware formation.

ATTACHED

IN ABOVE SPACE DESCRIBE PROPOSED PROGRAM: If proposal is to deepen or plug back, give data on present productive zone and proposed new productive zone. If proposal is to drill or deepen directionally, give pertinent data on subsurface locations and measured and true vertical depths. Give blowout preventer program, if any.

24. SIGNED  TITLE Geologist DATE 5/18/92  
(This space for Federal or State office use)

PERMIT NO. APPROVAL DATE

APPROVED BY TITLE DATE 6-3-

CONDITIONS OF APPROVAL, IF ANY:

\*See Instructions On Reverse Side

Submit to Appropriate  
District Office  
State Lease - 4 copies  
Fee Lease - 3 copies

State of New Mexico  
Energy, Minerals and Natural Resources Department

Form C-102  
Revised 1-1-89

OIL CONSERVATION DIVISION

P.O. Box 2088  
Santa Fe, New Mexico 87504-2088

DISTRICT I  
P.O. Box 1980, Hobbs, NM 88240

DISTRICT II  
P.O. Drawer DD, Artesia, NM 88210

DISTRICT III  
1000 Rio Brazos Rd., Aztec, NM 87410

WELL LOCATION AND ACREAGE DEDICATION PLAT

All Distances must be from the outer boundaries of the section

|   |                                 |                                    |                           |                                |               |
|---|---------------------------------|------------------------------------|---------------------------|--------------------------------|---------------|
| Operator<br>Ray Westall   |                                 |                                    | Lease<br>Santa Fe Federal |                                | Well No.<br>3 |
| Unit Letter<br>I  | Section<br>35                   | Township<br>22 South               | Range<br>28 East          | County<br>Eddy                 |               |
| Actual Footage Location of Well:<br>1946 feet from the South line and 626 feet from the East line |                                 |                                    |                           |                                |               |
| Ground level Elev.<br>3107  | Producing Formation<br>Delaware | Pool<br>E. Herradura Bend Delaware |                           | Dedicated Acreage:<br>40 Acres |               |

1. Outline the acreage dedicated to the subject well by colored pencil or hatchure marks on the plat below.

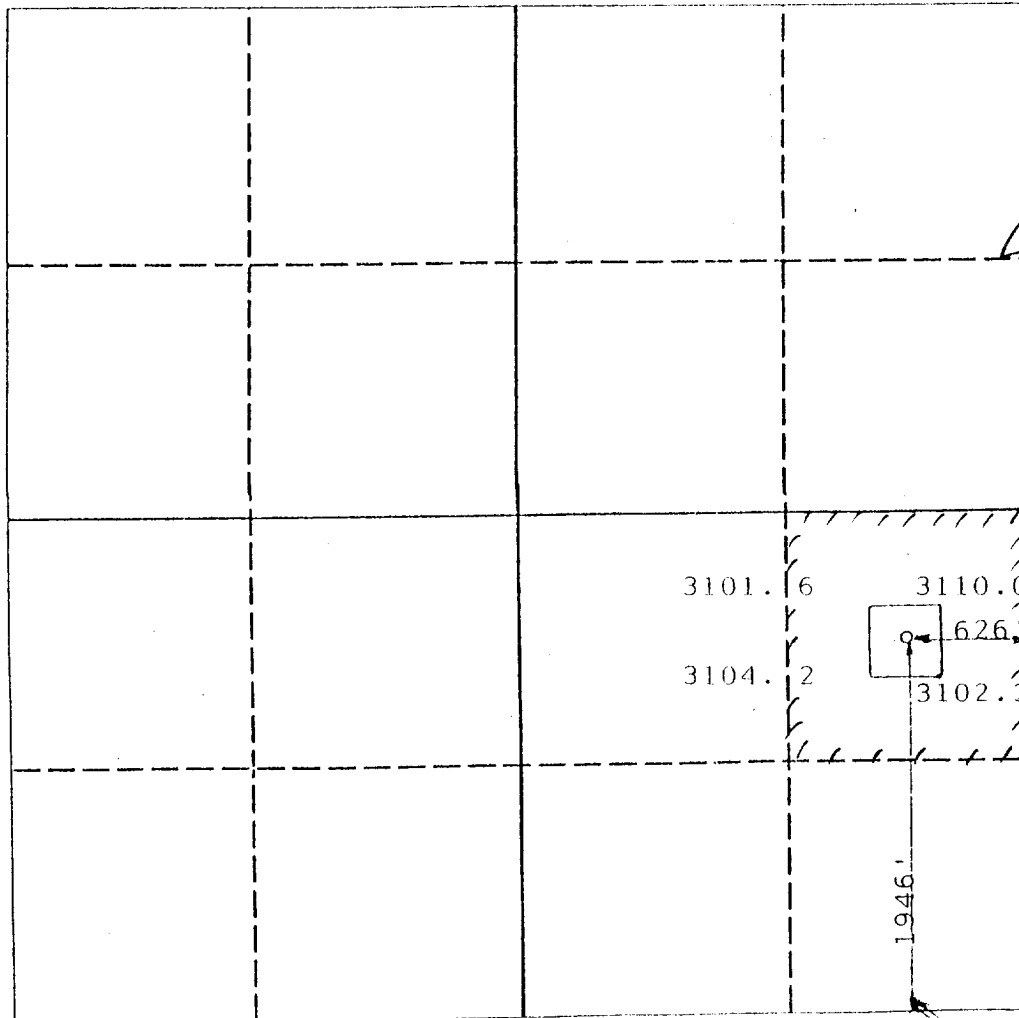
2. If more than one lease is dedicated to the well, outline each and identify the ownership thereof (both as to working interest and royalty).

3. If more than one lease of different ownership is dedicated to the well, have the interest of all owners been consolidated by communitization, unitization, force-pooling, etc.?

☐ Yes ☐ No If answer is "yes" type of consolidation

If answer is "no" list the owners and tract descriptions which have actually been consolidated. (Use reverse side of this form if necessary.)

No allowable will be assigned to the well until all interests have been consolidated (by communitization, unitization, forced-pooling, or otherwise) or until a non-standard unit, eliminating such interest, has been approved by the Division.



OPERATOR CERTIFICATION

I hereby certify that the information contained herein is true and complete to the best of my knowledge and belief.

Signature

Printed Name

Randall L. Harris

Position

Geologist

Company

Ray Westall

Date

5/18/92

SURVEYOR CERTIFICATION

I hereby certify that the well location shown on this plat was plotted from field notes of actual surveys made by me or under my supervision, and that the same is true and correct to the best of my knowledge and belief.

Date Surveyed

April 21, 1992

Signature & Seal of  
Professional Surveyor

P. R. Patton

Certificate No.

8112

0 330 660 990 1320 1650 1980 2310 2640 2000 1500 1000 500 0

## APPLICATION FOR DRILLING

Ray Westall  
Santa Fe Federal #3  
1946 FSL & 626 FEL  
Section 35, T22S-R28E  
Eddy County, New Mexico  
NM-67980

In conjunction with Form 9-331-c, Application for Permit to Drill subject well, Ray Westall submits the following ten items of pertinent information in accordance with BLM requirements:

1. The geological surface formation is quaternary.
2. The estimated tops of geologic markers are as follows:  
Bell Canyon 2800  
Cherry Canyon 3750  
Brushy Canyon 4800  
Bone Springs 6325
3. The estimated depths at which anticipated water, oil & gas formations are expected to be encountered:  
Water 0-180'  
Oil and Gas zones listed in item #2
4. Proposed casing program: See 9-331-c
5. Pressure Control Equipment: See 9-331-c and exhibit E.
6. Mud Program: Fresh water in surface hole, brine water to TD
7. Auxiliary Equipment: None
8. Logging Program: CNL/FDC/GR, DLL.
9. No abnormal pressures or temperatures are anticipated.
10. Anticipated Starting Date: As soon as possible.

## MULTI-POINT SURFACE USE AND OPERATIONS PLAN

RAY WESTALL

This plan is submitted with form 9-331-c, Application for Permit to Drill, covering the above described well. The purpose of this plan is to describe the location of the proposed well, the proposed construction activities and operations plan, the magnitude of surface disturbance involved, and the procedures to be followed in rehabilitating the surface after completion of the operations, so that a complete appraisal can be made of the environmental effect associated with the operation.

### 1. EXISTING ROADS.

Exhibit A is a portion of a USGS topographic map showing the wells and roads in the vicinity of the proposed location.

### 2. PLANNED ACCESS ROAD.

No access road is required.

### 3. LOCATION OF EXISTING WELLS.

There is no existing wells on this 40 acres.

### 4. LOCATION OF EXISTING/OR PROPOSED FACILITIES

There is production facilities on the lease located on the Santa Fe Federal #1 location in the SWNE sec. 35. If productive a flow line will be laid to this facility along existing right-of-way.

### 5. LOCATION AND TYPE OF WATER SUPPLY.

It is planned to drill the proposed well with a brine water system. The water will be obtained from commercial sources and will be hauled to the location by truck.

### 6. SOURCE OF CONSTRUCTION MATERIALS.

The location and road will be scraped out to caliche.

7. METHODS OF HANDLING WASTE DISPOSAL.

- A. Drill cuttings will be disposed of in the reserve pit.
- B. Drilling fluids will be allowed to evaporate in the reserve pits until the pits are dry.
- C. Produced water during operations will be stored in reserve pits until dry.
- D. Oil produced during operations will be stored in tanks until sold.
- E. Current laws and regulations pertaining to the disposal of human waste will be complied with.
- F. Trash, waste paper, garbage and junk will be kept in a approved trash trailer and removed to an approved disposal facility All waste material will be contained to prevent scattering by the wind.
- G. All trash and debris will be removed from the wellsite within 30 days after finishing drilling and or completion of operations.

8. ANCILLARY FACILITIES

None required.

9. WELLSITE LAYOUT.

Exhibit C shows the relative location and dimensions of the well pad, the reserve pits, a 400' X 400' area has been staked and flagged.

10. PLANS FOR RESTORATION OF THE SURFACE.

- A. After finishing drilling and completion operations, all equipment and other material not needed for further operations will be removed. The location will be cleaned of all trash and junk to leave the wellsite in as aesthetically pleasing a condition as possible.
- B. Unguarded pits, if any containing fluids will be fenced until they have been filled.
- C. If the proposed well is non-productive, all rehabilitation and or vegetation requirements of the BLM and USGS will be complied with and will be accomplished as expeditiously as possible. All pits will be filled and leveled within 90 days after abandonment.

11. OTHER INFORMATION.


- A. Topography: The land surface in the vicinity of the wellsite is on a caliche hill.
- B. Flora and Fauna: The vegetation cover consists of prairie grass, greasewood and miscellaneous desert growth. No wildlife was observed, but wildlife in the area probably includes those typical of semi-arid desert land. The area is used for cattle grazing
- C. There are no ponds, lakes or rivers in the area.
- D. There are no inhabited dwelling in the vicinity of the proposed well.
- E. Surface Ownership: The wellsite is on federal surface.
- F. Evidence of archeological sites has been reported and previously filed.

12. OPERATOR' REPRESENTATIVE

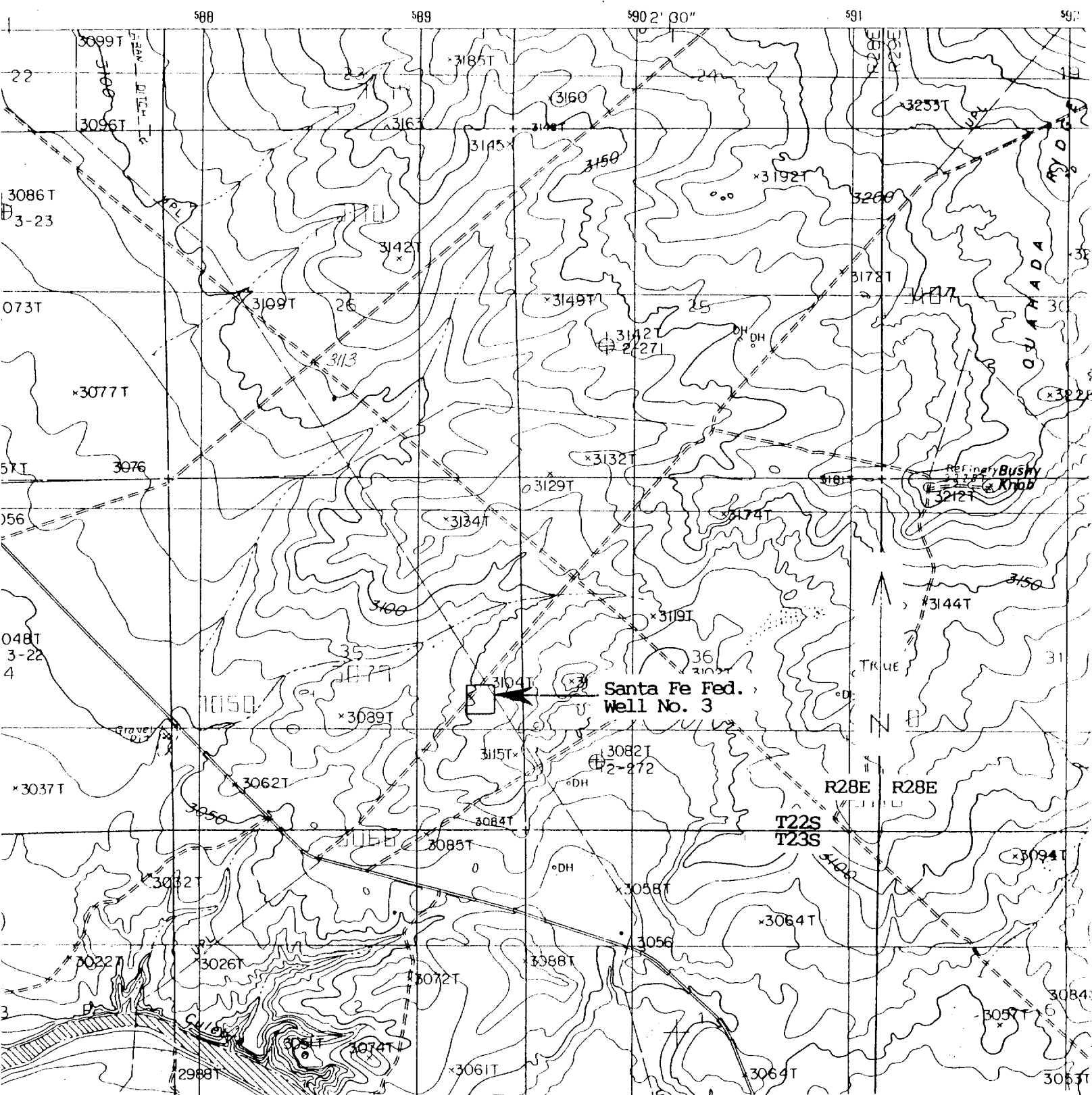
Ray Westall  
P.O. Box 4,  
Loco Hills, NM 88255  
(505) 677-2370

13. CERTIFICATION.

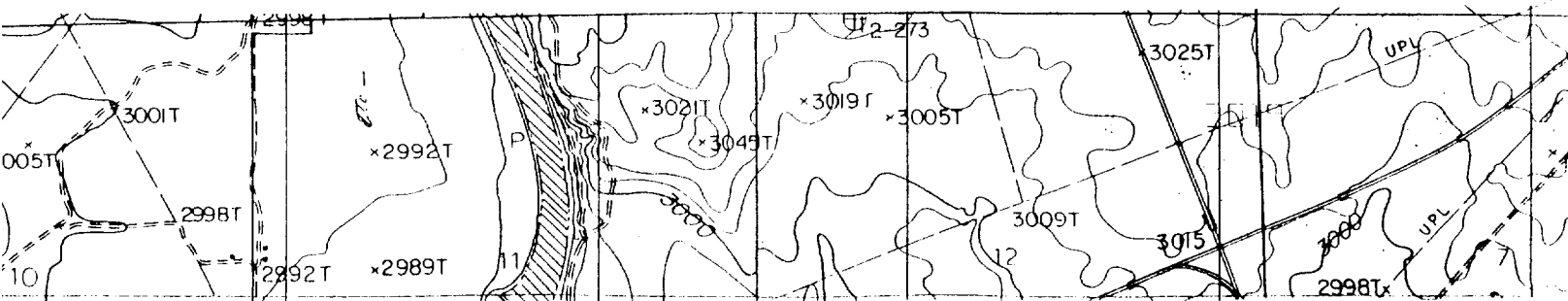
I hereby certify that I, or persons under my direct supervision, have inspected the proposed drillsite and access route, that I am familiar with the conditions which presently exist; that the statements made in this plan are to the best of my knowledge true and correct; and that the work associated with the operations proposed herein will be performed by the operator and it's subcontractors in conformity with this plan and the terms and conditions under which it is approved.



Randall L. Harris



Map showing the location of the Ray Westall Santa Fe Federal Well No. 3. T22S, R28E, Section 35, Eddy County, N.M. [BLM, Roswell District, Carlsbad Resource Area, N.M.]. Square shows location of well pad. U.S.G.S. 7.5 minute series, LOVING, NEW MEXICO, 1985. ASC Project 92-48.

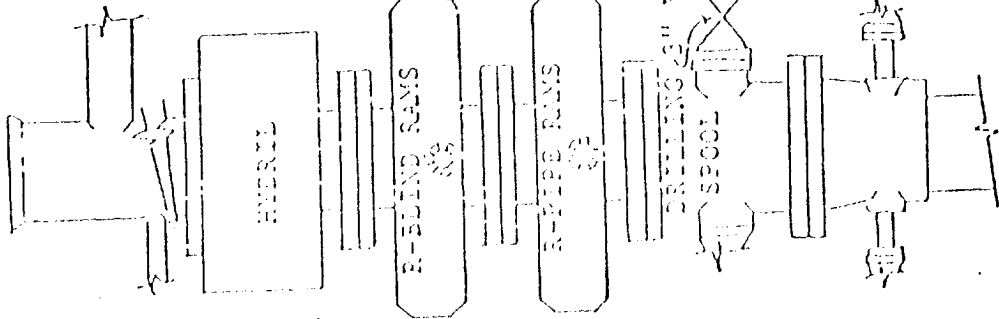


Ray Westall

Santa Fe Federal #1

Section 35, T22South-R28East

Eddy County, New Mexico



|   |   |   |   |   |   |   |   |   |    |    |    |    |    |    |    |    |    |    |    |    |    |    |    |    |    |    |    |    |    |    |    |    |    |    |    |    |    |    |    |    |    |    |    |    |    |    |    |    |    |    |    |    |    |    |    |    |    |    |    |    |    |    |    |    |    |    |    |    |    |    |    |    |    |    |    |    |    |    |    |    |    |    |    |    |    |    |    |    |    |    |    |    |    |    |    |    |    |    |     |
|---|---|---|---|---|---|---|---|---|----|----|----|----|----|----|----|----|----|----|----|----|----|----|----|----|----|----|----|----|----|----|----|----|----|----|----|----|----|----|----|----|----|----|----|----|----|----|----|----|----|----|----|----|----|----|----|----|----|----|----|----|----|----|----|----|----|----|----|----|----|----|----|----|----|----|----|----|----|----|----|----|----|----|----|----|----|----|----|----|----|----|----|----|----|----|----|----|----|----|-----|
| 1 | 2 | 3 | 4 | 5 | 6 | 7 | 8 | 9 | 10 | 11 | 12 | 13 | 14 | 15 | 16 | 17 | 18 | 19 | 20 | 21 | 22 | 23 | 24 | 25 | 26 | 27 | 28 | 29 | 30 | 31 | 32 | 33 | 34 | 35 | 36 | 37 | 38 | 39 | 40 | 41 | 42 | 43 | 44 | 45 | 46 | 47 | 48 | 49 | 50 | 51 | 52 | 53 | 54 | 55 | 56 | 57 | 58 | 59 | 60 | 61 | 62 | 63 | 64 | 65 | 66 | 67 | 68 | 69 | 70 | 71 | 72 | 73 | 74 | 75 | 76 | 77 | 78 | 79 | 80 | 81 | 82 | 83 | 84 | 85 | 86 | 87 | 88 | 89 | 90 | 91 | 92 | 93 | 94 | 95 | 96 | 97 | 98 | 99 | 100 |
|---|---|---|---|---|---|---|---|---|----|----|----|----|----|----|----|----|----|----|----|----|----|----|----|----|----|----|----|----|----|----|----|----|----|----|----|----|----|----|----|----|----|----|----|----|----|----|----|----|----|----|----|----|----|----|----|----|----|----|----|----|----|----|----|----|----|----|----|----|----|----|----|----|----|----|----|----|----|----|----|----|----|----|----|----|----|----|----|----|----|----|----|----|----|----|----|----|----|----|-----|

FOR GOES ALL PLANGED CONNECTIONS

600,000  
-  
50,000

550,000

FOR THE  
FEDERAL  
OFFICE OF  
ENVIRONMENTAL  
PROTECTION