

OIL CONSERVATION DIVISION

EXHIBIT #2

DISTRICT I

P.O. Box 1980, Hobbs, NM 88240

P.O. Box 2088

Santa Fe, New Mexico 87504-2088

DISTRICT II

P.O. Drawer DD, Artesia, NM 88210

DISTRICT III

1000 Rio Brazos Rd., Artec, NM 87410

WELL LOCATION AND ACREAGE DEDICATION PLAT

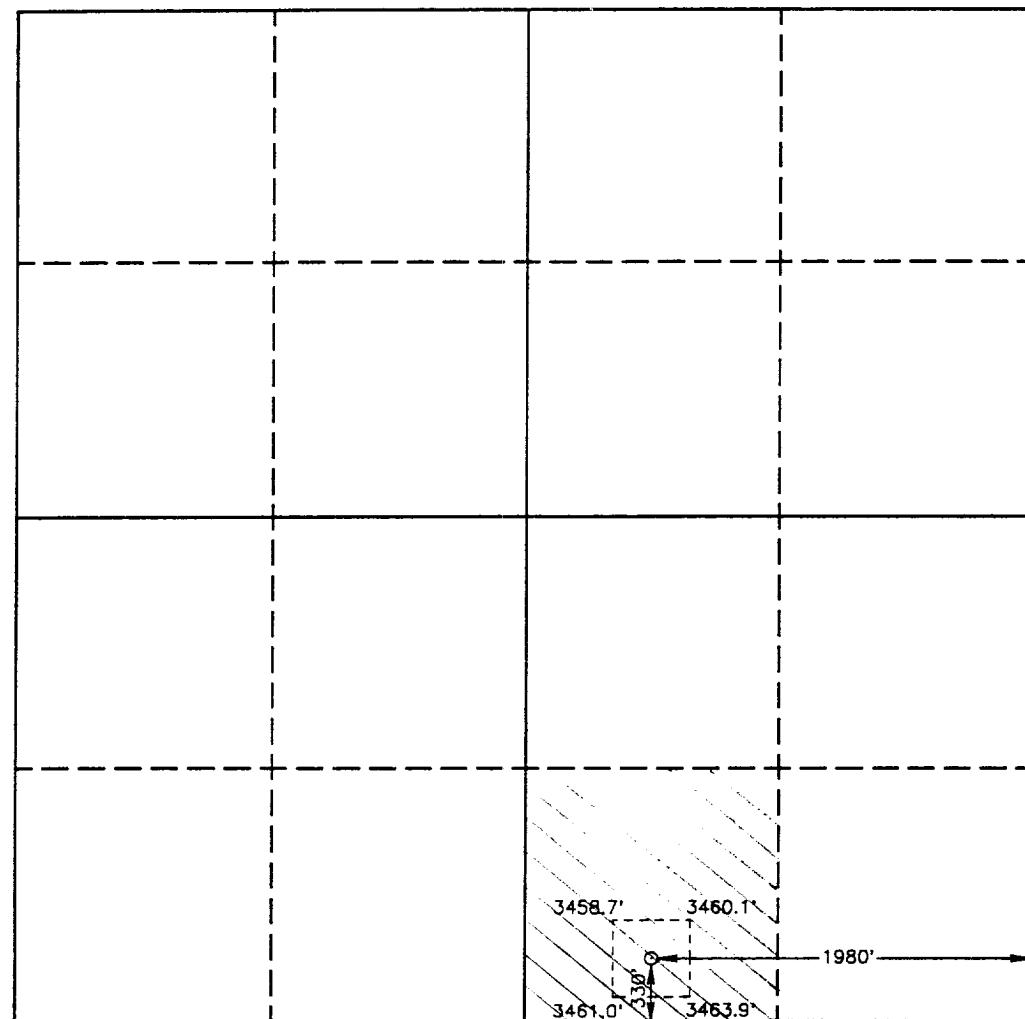
All Distances must be from the outer boundaries of the section

Operator DEVON ENERGY CORPORATION			Lease TODD 26 FEDERAL		Well No. 15
Unit Letter 0	Section 26	Township 23 SOUTH	Range 31 EAST	County EDDY	
Actual Footage Location of Well: 330' feet from the SOUTH line and 1980 feet from the EAST line					
Ground Level Elev. 3462.4'	Producing Formation Delaware		Pool Undesignated		Dedicated Acreage: 40 Acres

1. Outline the acreage dedicated to the subject well by colored pencil or hachure marks on the plat below.
2. If more than one lease is dedicated to the well, outline each and identify the ownership thereof (both as to working interest and royalty).
3. If more than one lease of different ownership is dedicated to the well, have the interest of all owners been consolidated by communitization, unitization, force-pooling, etc.?
☐ Yes ☐ No If answer is "yes" type of consolidation _____

If answer is "no" list of owners and tract descriptions which have actually been consolidated. (Use reverse side of this form necessary.)

No allowable will be assigned to the well unit all interests have been consolidated (by communitization, unitization, forced-pooling, otherwise) or until a non-standard unit, eliminating such interest, has been approved by the Division.



OPERATOR CERTIFICATION

I hereby certify the the information contained herein is true and complete to the best of my knowledge and belief.

Signature

Printed Name

Charles W. Horsman

Position

District Engineer

Company Devon Energy Corporation (Nevada)

Date

July 31, 1992

SURVEYOR CERTIFICATION

I hereby certify that the well location shown on this plat was plotted from field notes of actual surveys made by me or under my supervision and that the same is true and correct to the best of my knowledge and belief.

Date Surveyed

JULY 17, 1992

Signature & Seal of Professional Surveyor

Certificate No. JOHN W. WEST, 676

RONALD J. EIDSON, 3239

GARY L. JONES, 7877

92-11-0991