

OIL CONSERVATION DIVISION

P.O. Box 2088
Santa Fe, New Mexico 87504-2088

DISTRICT I
P.O. Box 1980, Hobbs, NM 88240

DISTRICT II
P.O. Drawer DD, Artesia, NM 88210

DISTRICT III
1000 Rio Bratos Rd., Aztec, NM 87410

WELL LOCATION AND ACREAGE DEDICATION PLAT

All Distances must be from the outer boundaries of the section

| | | | | | |
|---|--------------------------------------|-----------------------------|---|------|--|
| Operator SANTA FE ENERGY RESOURCES, INC. | | | Lease MOSLEY CANYON | | Well No. 1 |
| Unit Letter C | Section 9 | Township 24 SOUTH | Range 25 EAST | NMPM | County EDDY |
| Actual Footage Location of Well: 860 feet from the NORTH line and 1980 feet from the WEST line | | | | | |
| Ground Level Elev. 3821.6' | Producing Formation Strawn | | Pool Baldrige Canyon (Strawn) | | Dedicated Acreage: 320 Acres |

1. Outline the acreage dedicated to the subject well by colored pencil or hatchure marks on the plat below.

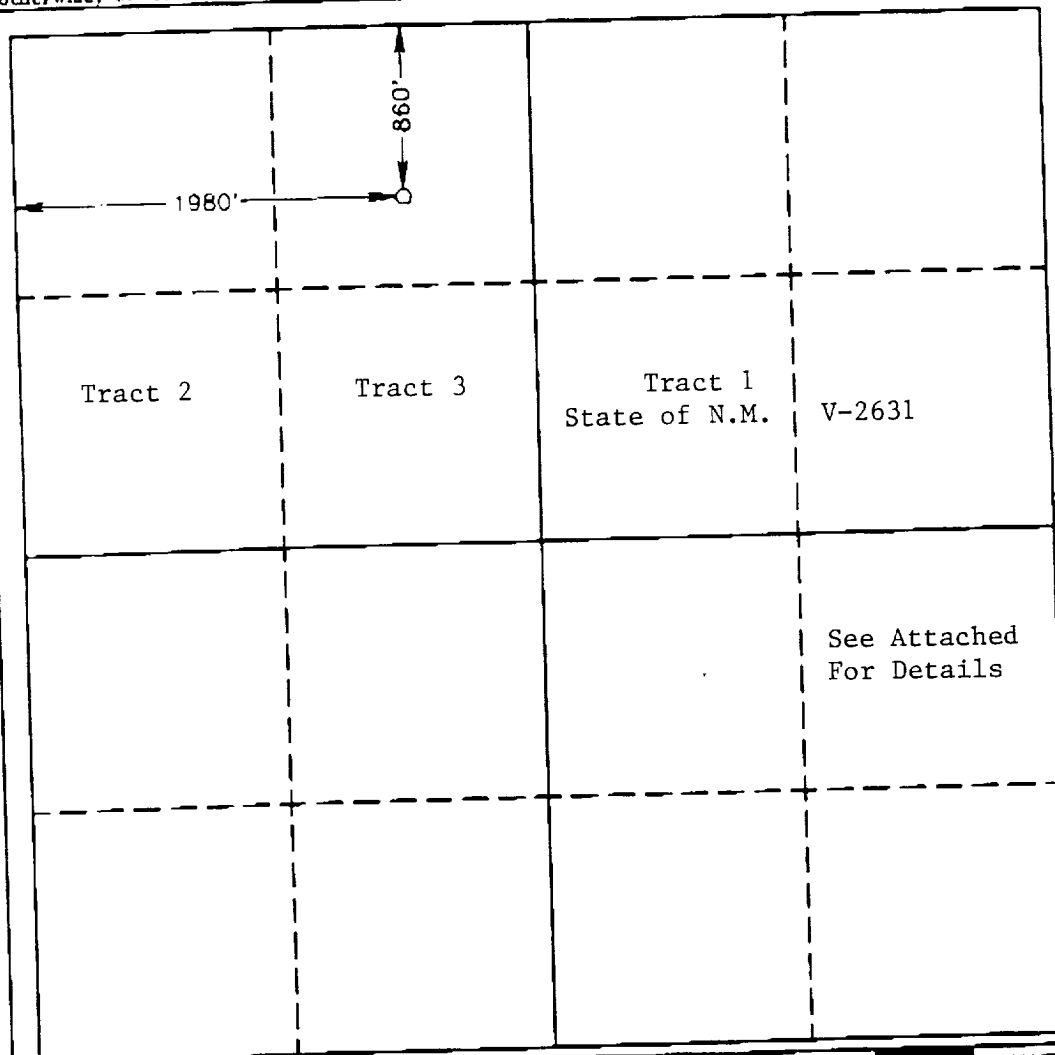
2. If more than one lease is dedicated to the well, outline each and identify the ownership thereof (both as to working interest and royalty).

3. If more than one lease of different ownership is dedicated to the well, have the interest of all owners been consolidated by communitization, unitization, forced-pooling, etc.?
Communitization

☒ Yes ☐ No If answer is "yes" type of consolidation

If answer is "no" list of owners and tract descriptions which have actually been consolidated. (Use reverse side of this form necessary.)

No allowable will be assigned to the well unit all interests have been consolidated (by communitization, unitization, forced-pooling, otherwise) or until a non-standard unit, eliminating such interest, has been approved by the Division.



OPERATOR CERTIFICATION

I hereby certify the the information contained herein is true and complete to the best of my knowledge and belief.

Signature

Darrell Roberts

Printed Name

Darrell Roberts

Position

Senior Drilling Engineer

Company Santa Fe Energy

Operating Partners, L.P.

Date

July 9, 1993

SURVEYOR CERTIFICATION

I hereby certify that the well location shown on this plat was plotted from field notes of actual surveys made by me or under my supervision, and that the same is true or correct to the best of my knowledge and belief.

Date Surveyed

JUNE 29, 1993

Signature & Seal of
Professional Surveyor

Daryl J. Jones
Certificate No. **JOHN W. WEST, 6**
RONALD J. EIDSON, 3:
GARY L. JONES, 7:

93-11-122U