

OIL CONSERVATION DIVISION

P.O. Box 2088
Santa Fe, New Mexico 87504-2088

DISTRICT I

P.O. Box 1980, Hobbs, NM 88240

DISTRICT II

P.O. Drawer DD, Artesia, NM 88210

DISTRICT III

1000 Rio Brazos Rd., Artec, NM 87410

WELL LOCATION AND ACREAGE DEDICATION PLAT

All Distances must be from the outer boundaries of the section

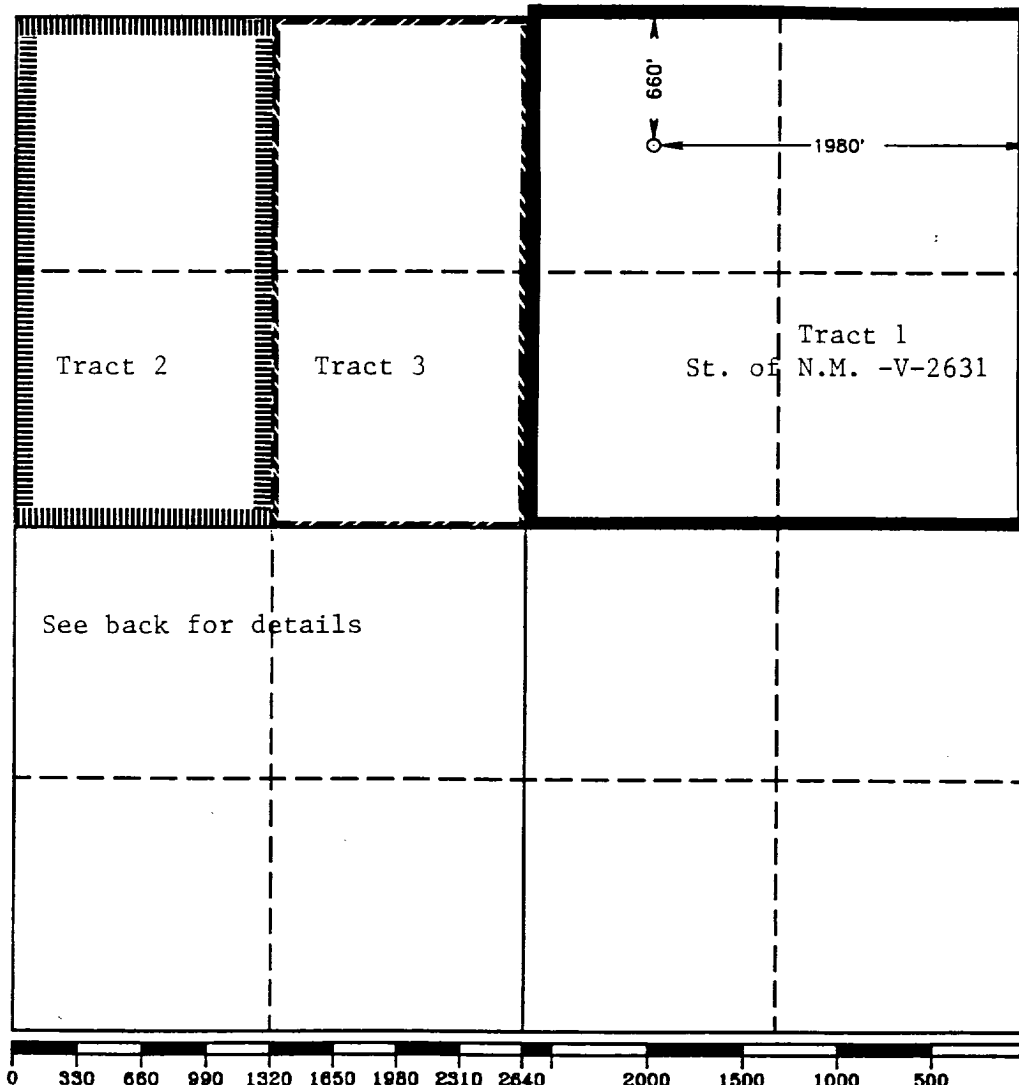
Operator Santa Fe Energy Operating Partners, LP			Lease MOSLEY CANYON "9" STATE COM.		Well No. 1
Unit Letter B	Section 9	Township 24 SOUTH	Range 25 EAST	NMPM	County EDDY
Actual Footage Location of Well: 660 feet from the NORTH line and 1980 feet from the EAST line					
Ground Level Elev. 3867.3'	Producing Formation Strawn	Pool Baldrige Canyon (Strawn)	Dedicated Acreage: 320 Acres		

- Outline the acreage dedicated to the subject well by colored pencil or hachure marks on the plat below.
- If more than one lease is dedicated to the well, outline each and identify the ownership thereof (both as to working interest and royalty).
- If more than one lease of different ownership is dedicated to the well, have the interest of all owners been consolidated by communitization, unitization, force-pooling, etc.?

☒ Yes ☐ No If answer is "yes" type of consolidation Communitization

If answer is "no" list of owners and tract descriptions which have actually been consolidated. (Use reverse side of this form necessary.)

No allowable will be assigned to the well unit all interests have been consolidated (by communitization, unitization, forced-pooling, otherwise) or until a non-standard unit, eliminating such interest, has been approved by the Division.



OPERATOR CERTIFICATION

I hereby certify the the information contained herein is true and complete to the best of my knowledge and belief.

Signature

Darrell Roberts

Printed Name

Darrell Roberts

Position

Senior Drilling Engineer

Company Santa Fe Energy Operating Partners, L.P.

Date

September 21, 1992

SURVEYOR CERTIFICATION

I hereby certify that the well location shown on this plat was plotted from field notes of actual surveys made by me or under my supervision, and that the same is true and correct to the best of my knowledge and belief.

Date Surveyed

JULY 31, 1992

Signature & Seal of Professional Surveyor

Ronald J. Edson
Certificate No. JOHN W. WEST. 676
RONALD J. EDSON. 3239
GARY L. JONES. 7977
92-49-1510

Tr. #1 WI Ownership
 NE/4 *SFEOP, LP
 Sec. 9 *EXXON

WI%
 .60
 .40
1.00

*Operating Rights from the
 surface down to 10,306'
 beneath the surface

St. of NM-V-2631

**SFEOP, LP

1.00
1.00

**Operating Rights below 10,306'
 beneath the surface

Royalty
 St. of N.M.

Royalty %
 16.667%

Tr. #2
 W/2 NW/4
 Sec. 9

WI Ownership
 SFEOP, LP

WI%
1.00
1.00

Royalty
 Ridley Gardner, et al

Royalty %
 18.75%

Tr. #3
 E/ NW/4
 Sec. 9

WI Ownership
 SFEOP, LP
 Unleased

WI%
 .9375
 .0625
1.0000

Royalty
 Pardue Farms, et al

Royalty %
 25.00%