

Submit to Appropriate
District Office
State Lease - 4 copies
Fee Lease - 3 copies

State of New Mexico
Energy, Minerals and Natural Resources Department

Form C-102
Revised 1-1-89

OIL CONSERVATION DIVISION

P.O. Box 2088
Santa Fe, New Mexico 87504-2088

DISTRICT I
P.O. Box 1980, Hobbs, NM 88240

DISTRICT II
P.O. Drawer DD, Artesia, NM 88210

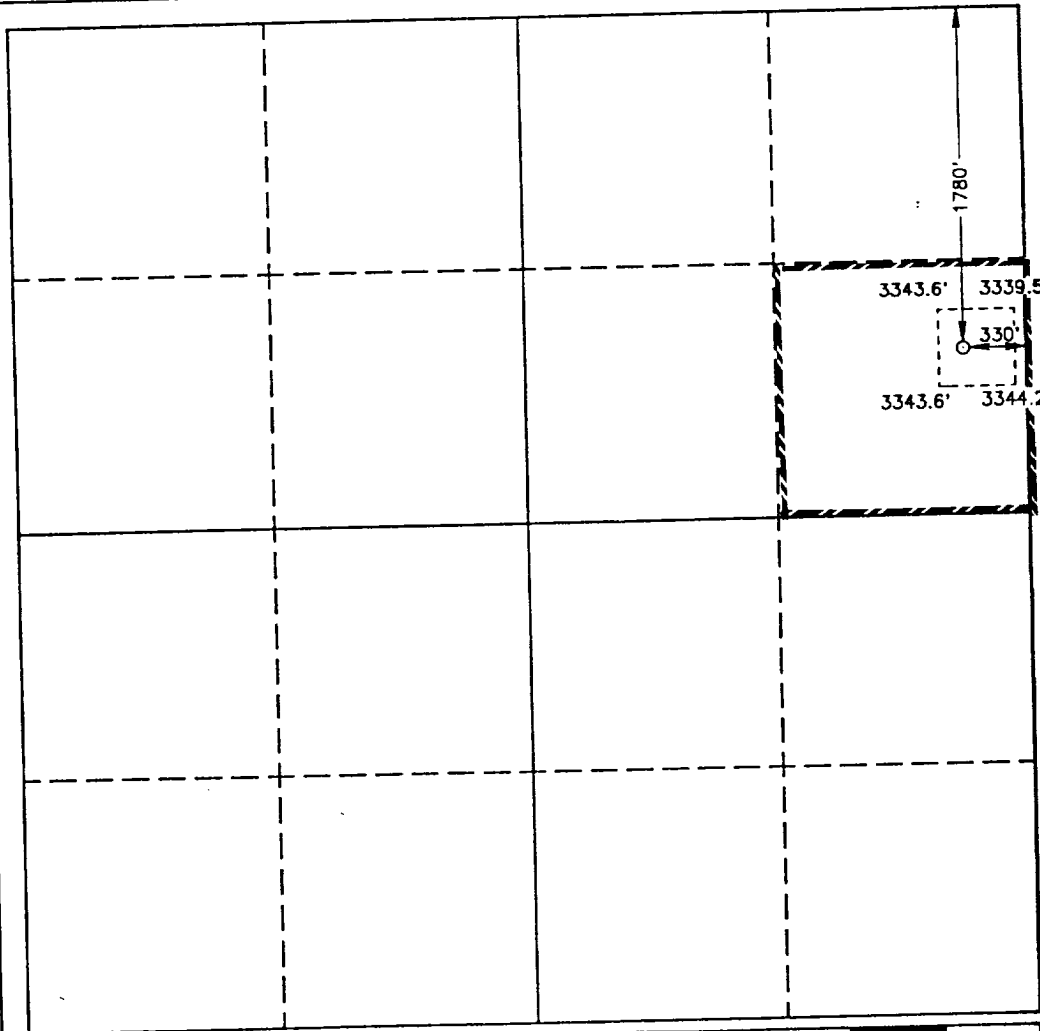
DISTRICT III
1000 Rio Brazos Rd., Artec, NM 87410

WELL LOCATION AND ACREAGE DEDICATION PLAT

All Distances must be from the outer boundaries of the section

Operator SANTA FE ENERGY RESOURCES, INC.			Lease PURE GOLD C-17		Well No. 4
Unit Letter H	Section 17	Township 23 SOUTH	Range 31 EAST	County EDDY	
Actual Footage Location of Well: 1780 feet from the NORTH line and 330 feet from the EAST line					
Ground Level Elev. 3345.9'	Producing Formation DELAWARE	Pool SAND DUNES WEST DELAWARE		Dedicated Acreage: 40 Acres	

- Outline the acreage dedicated to the subject well by colored pencil or hachure marks on the plat below.
- If more than one lease is dedicated to the well, outline each and identify the ownership thereof (both as to working interest and royalty).
- If more than one lease of different ownership is dedicated to the well, have the interest of all owners been consolidated by communitization, unitization, force-pooling, etc.?
☐ Yes ☐ No If answer is "yes" type of consolidation _____
If answer is "no" list of owners and tract descriptions which have actually been consolidated. (Use reverse side of this form necessary.)
No allowable will be assigned to the well unit all interests have been consolidated (by communitization, unitization, forced-pooling, otherwise) or until a non-standard unit, eliminating such interest, has been approved by the Division.



OPERATOR CERTIFICATION

I hereby certify that the information contained herein is true and complete to the best of my knowledge and belief.

Signature
Darrell Roberts
Printed Name
DARRELL ROBERTS
Position
SR. DRILLING ENGINEER
Company
SANTA FE ENERGY OPERATING PARTNERS, L.P.
Date
8-28-92

SURVEYOR CERTIFICATION

I hereby certify that the well location shown on this plat was plotted from field notes of actual surveys made by me or under my supervision and that the same is true and correct to the best of my knowledge and belief.

Date Surveyed
JULY 22, 1992

Signature & Seal of
Professional Surveyor

Ronald J. Eidson
Certificate No. **JOHN W. WEST 876**
RONALD J. EIDSON 3239
GARY C. JONES 7877
92-11-0892