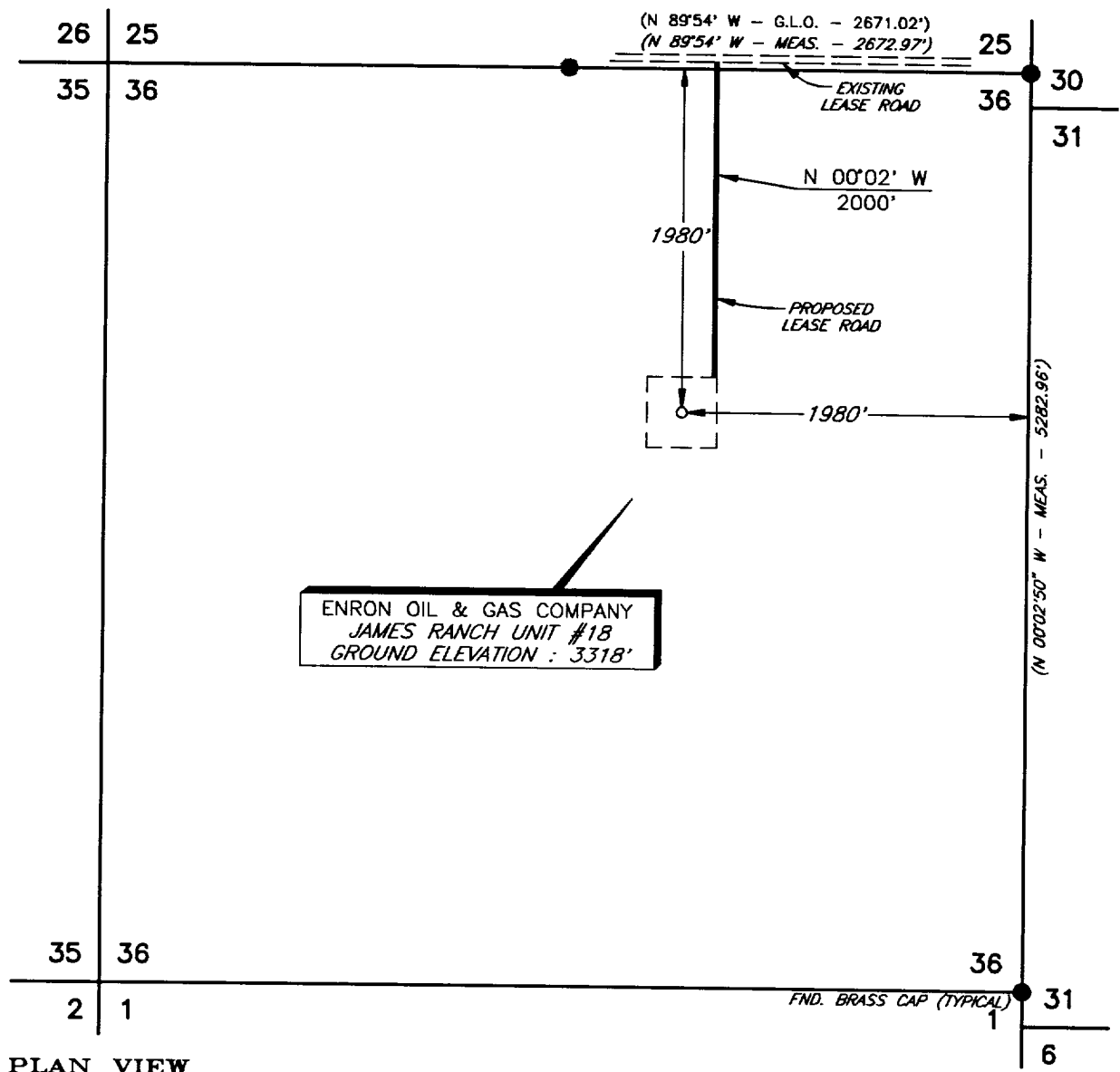
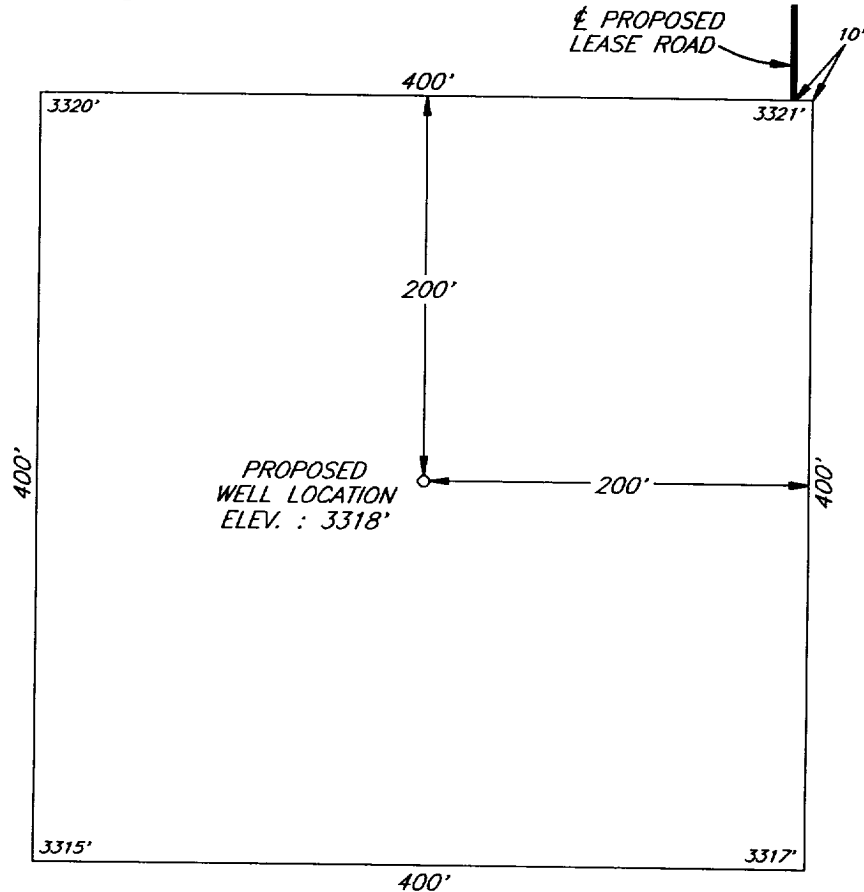


PLAT SHOWING PROPOSED
WELL LOCATION AND LEASE ROAD IN
SECTION 36, T-22-S, R-30-E, N.M.P.M.
EDDY COUNTY, NEW MEXICO



PLAN VIEW
1" = 1000'



DETAIL VIEW
1" = 100'

				ENRON OIL & GAS COMPANY <i>MIDLAND, TEXAS</i>	SCALE: AS SHOWN
NO.	REVISION	DATE	BY		DATE: AUGUST 10, 1992
SURVEYED BY: L.W.B.				SURVEYING AND MAPPING BY TOPOGRAPHIC LAND SURVEYORS <i>MIDLAND, TEXAS</i>	JOB NO.: 92138
DRAWN BY: V.H.B.					48 SE
APPROVED BY: L.W.B.					