

OIL CONSERVATION DIVISION

P.O. Box 2088
Santa Fe, New Mexico 87504-2088

DISTRICT I
P.O. Box 1980, Hobbs, NM 88240

DISTRICT II
P.O. Drawer DD, Artesia, NM 88210

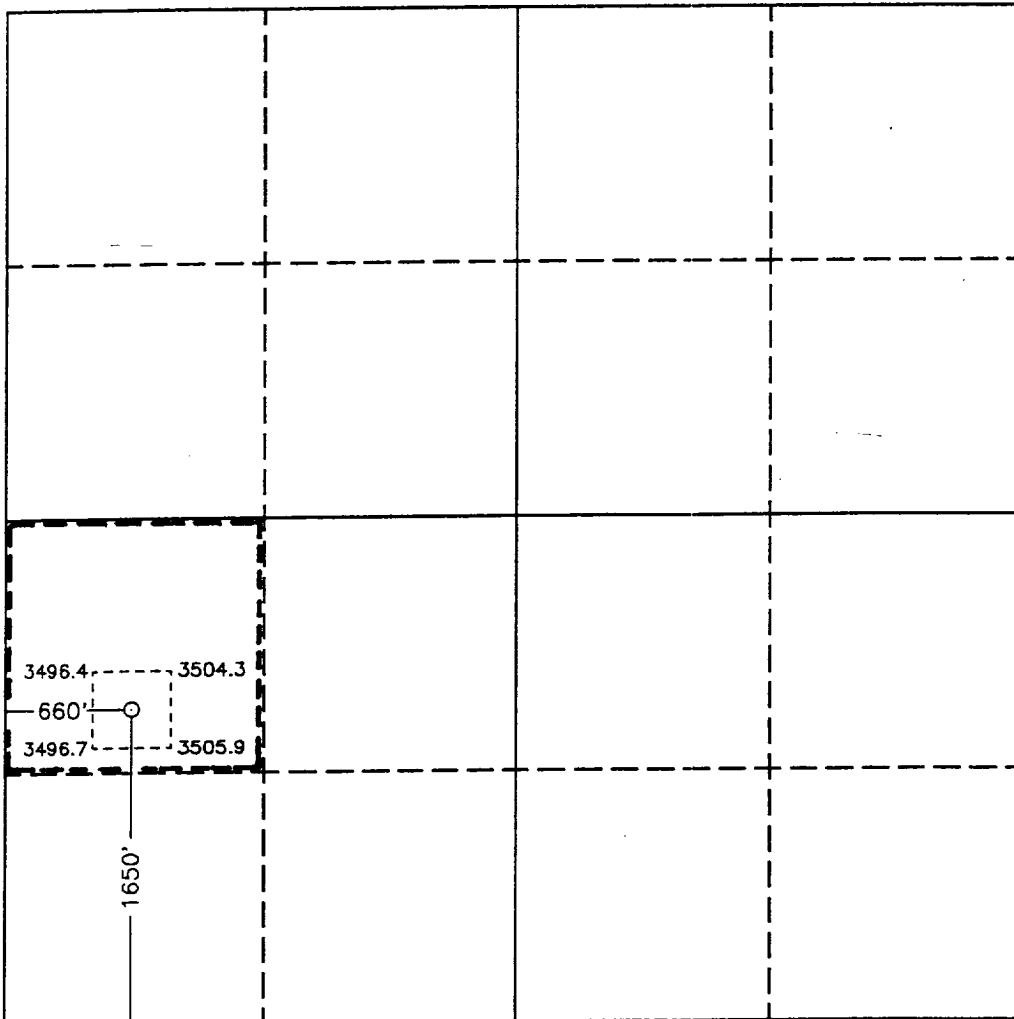
DISTRICT III
1000 Rio Brazos Rd., Artec, NM 87410

WELL LOCATION AND ACREAGE DEDICATION PLAT

All Distances must be from the outer boundaries of the section

Operator POGO PRODUCING COMPANY			Lease CAL-MON		Well No. 11
Unit Letter L	Section 35	Township 23 SOUTH	Range 31 EAST	NMPM	County EDDY
Actual Footage Location of Well: 1650 feet from the SOUTH line and 660 feet from the WEST line					
Ground Level Elev. 3501.1	Producing Formation DELAWARE	Pool UNDES. INGLE WELLS DELAWARE	Dedicated Acreage: 40 Acres		

1. Outline the acreage dedicated to the subject well by colored pencil or hachure marks on the plat below.
 2. If more than one lease is dedicated to the well, outline each and identify the ownership thereof (both as to working interest and royalty).
 3. If more than one lease of different ownership is dedicated to the well, have the interest of all owners been consolidated by communitization, unitization, force-pooling, etc.?
☐ Yes ☐ No If answer is "yes" type of consolidation _____
- If answer is "no" list of owners and tract descriptions which have actually been consolidated. (Use reverse side of this form necessary.) _____
- No allowable will be assigned to the well unit all interests have been consolidated (by communitization, unitization, forced-pooling, otherwise) or until a non-standard unit, eliminating such interest, has been approved by the Division.



OPERATOR CERTIFICATION

I hereby certify that the information contained herein is true and complete to the best of my knowledge and belief.

Signature
Richard L. Wright
Printed Name
Richard L. Wright
Position
Division Operations Supr.
Company
POGO PRODUCING COMPANY
Date
October 26, 1992

SURVEYOR CERTIFICATION

I hereby certify that the well location shown on this plat was plotted from field notes of actual surveys made by me or under my supervision, and that the same is true and correct to the best of my knowledge and belief.

Date Surveyed
SEPTEMBER 4, 1992
Signature & Seal of
Professional Surveyor

John W. West
Certificate No. JOHN W. WEST 678
RONALD J. EDECK 3289
BART L. JONES 7977
92-11-1307