

OIL CONSERVATION DIVISION

P.O. Box 2088
Santa Fe, New Mexico 87504-2088

DISTRICT I

P.O. Box 1980, Hobbs, NM 88240

DISTRICT II

P.O. Drawer DD, Artesia, NM 88210

DISTRICT III

1900 Rio Brazos Rd., Aztec, NM 87410

WELL LOCATION AND ACREAGE DEDICATION PLAT

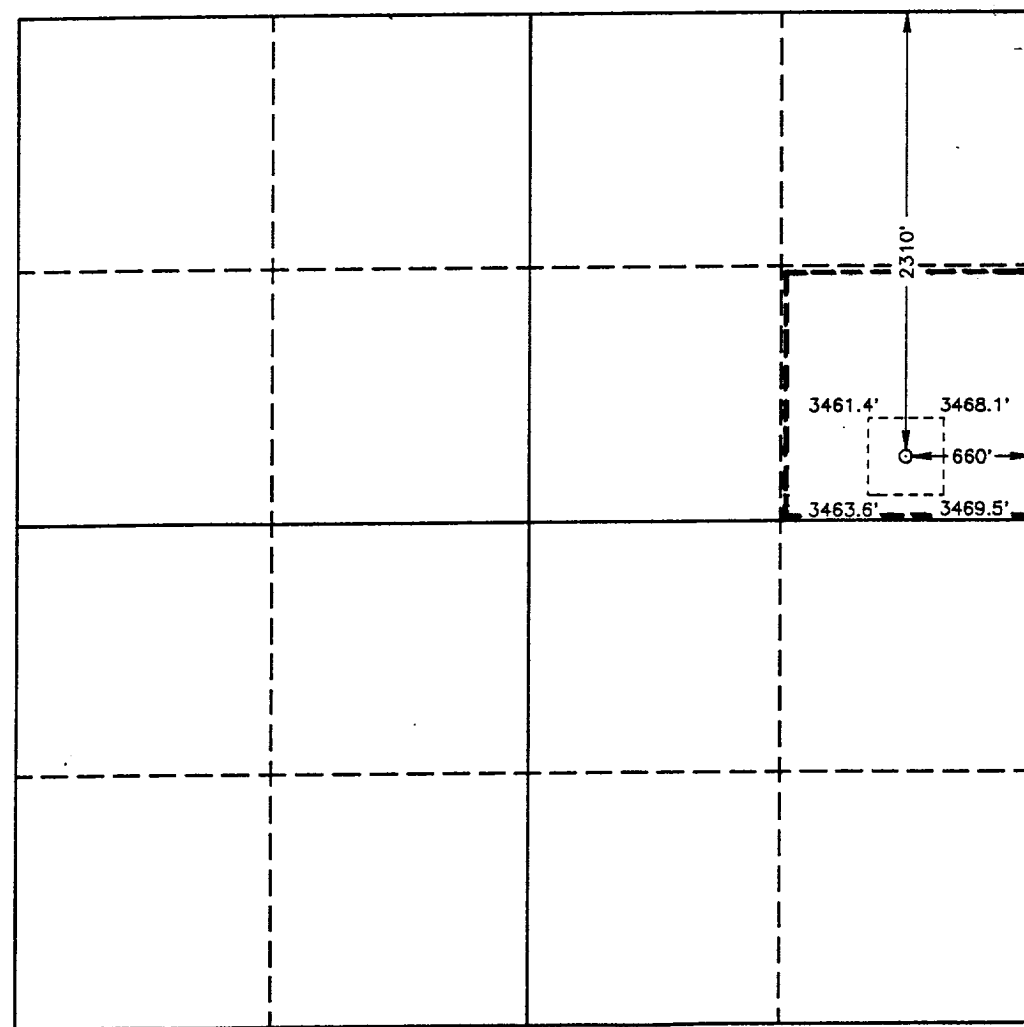
All Distances must be from the outer boundaries of the section

Operator POGO PRODUCING CO.		Lease SAND DUNES 34 FEDERAL		Well No. 2	
Unit Letter H	Section 34	Township 23 SOUTH	Range 31 EAST	County EDDY	
Actual Footage Location of Well: 2310 feet from the NORTH line and 660 feet from the EAST line					
Ground Level Elev. 3465.3'	Producing Formation DELAWARE	Pool UNDES. INGLE WELLS DELAWARE		Dedicated Acreage: 40 Acres	

- Outline the acreage dedicated to the subject well by colored pencil or hatchure marks on the plat below.
- If more than one lease is dedicated to the well, outline each and identify the ownership thereof (both as to working interest and royalty).
- If more than one lease of different ownership is dedicated to the well, have the interest of all owners been consolidated by communitization, unitization, force-pooling, etc.?
☐ Yes ☐ No If answer is "yes" type of consolidation _____

If answer is "no" list of owners and tract descriptions which have actually been consolidated. (Use reverse side of this form necessary.)

No allowable will be assigned to the well unit all interests have been consolidated (by communitization, unitization, forced-pooling, otherwise) or until a non-standard unit, eliminating such interest, has been approved by the Division.



0 330 660 990 1320 1650 1980 2310 2640 2000 1500 1000 500 0

OPERATOR CERTIFICATION

I hereby certify the the information contained herein is true and complete to the best of my knowledge and belief.

Signature *Richard L. Wright*

Printed Name **Richard L. Wright**

Position **Division Operations Supr**

Company **POGO PRODUCING COMPANY**

Date **October 15, 1992**

SURVEYOR CERTIFICATION

I hereby certify that the well location shown on this plat was plotted from field notes of actual surveys made by me or under my supervision and that the same is true and correct to the best of my knowledge and belief.

Date Surveyed **SEPTEMBER 28, 1992**

Signature & Seal of Professional Surveyor

Gary L. Jones
Certificate No. **JOHN W. WEST, 676**
RONALD J. EIDSON, 3239
GARY L. JONES, 7977
92-11-1452