

OIL CONSERVATION DIVISION

P.O. Box 2088  
Santa Fe, New Mexico 87504-2088

DISTRICT I  
P.O. Box 1980, Hobbs, NM 88240

DISTRICT II  
P.O. Drawer DD, Artesia, NM 88210

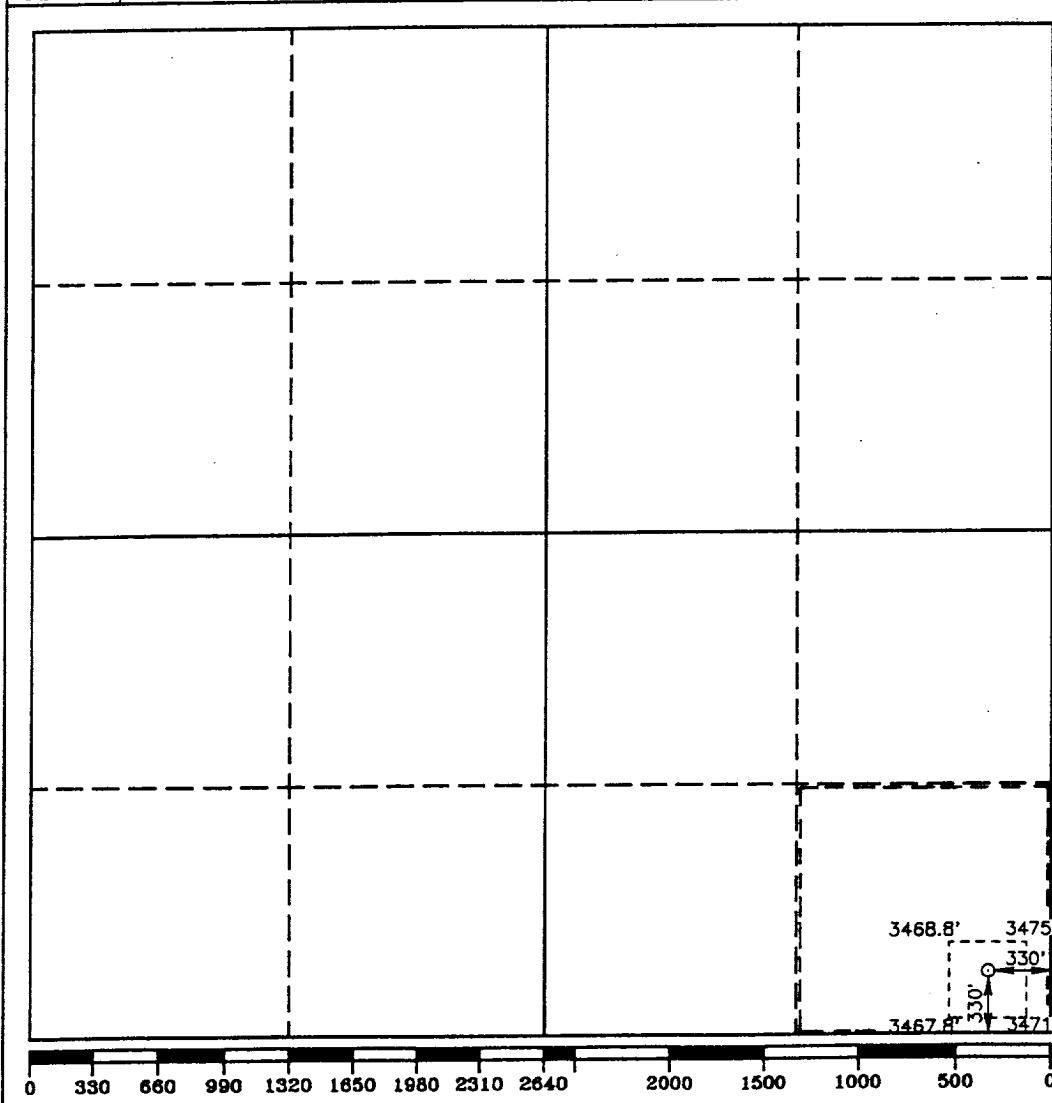
DISTRICT III  
1000 Rio Brazos Rd., Aztec, NM 87410

WELL LOCATION AND ACREAGE DEDICATION PLAT

All Distances must be from the outer boundaries of the section

Operator <b>POGO PRODUCING CO.</b>		Lease <b>SAND DUNES 34 FEDERAL</b>		Well No. <b>3</b>
Unit Letter <b>P</b>	Section <b>34</b>	Township <b>23 SOUTH</b>	Range <b>31 EAST</b> NMPM	County <b>EDDY</b>
Actual Footage Location of Well: <b>330</b> feet from the <b>SOUTH</b> line and <b>330</b> feet from the <b>EAST</b> line				
Ground Level Elev. <b>3471.3'</b>	Producing Formation <b>DELAWARE</b>	Pool <b>UNDES. INGLE WELLS DELAWARE</b>	Dedicated Acreage: <b>40</b> Acres	

- Outline the acreage dedicated to the subject well by colored pencil or hachure marks on the plat below.
  - If more than one lease is dedicated to the well, outline each and identify the ownership thereof (both as to working interest and royalty).
  - If more than one lease of different ownership is dedicated to the well, have the interest of all owners been consolidated by communitization, unitization, force-pooling, etc.?  
☐ Yes ☐ No If answer is "yes" type of consolidation \_\_\_\_\_
- If answer is "no" list of owners and tract descriptions which have actually been consolidated. (Use reverse side of this form necessary.) \_\_\_\_\_
- No allowable will be assigned to the well unit all interests have been consolidated (by communitization, unitization, forced-pooling, otherwise) or until a non-standard unit, eliminating such interest, has been approved by the Division.



<b>OPERATOR CERTIFICATION</b> I hereby certify that the information contained herein is true and complete to the best of my knowledge and belief.	
Signature	<i>Richard L. Wright</i>
Printed Name	Richard L. Wright
Position	Division Operations Supr.
Company	POGO PRODUCING COMPANY
Date	November 9, 1992
<b>SURVEYOR CERTIFICATION</b> I hereby certify that the well location shown on this plat was plotted from field notes of actual surveys made by me or under my supervision and that the same is true and correct to the best of my knowledge and belief.	
Date Surveyed	OCTOBER 2, 1992
Signature & Seal of Professional Surveyor	
Certificate No.	JONHEW WEST, 676 RONALD J. EIDSON, 3239 GARY L. JONES, 7977
92-11-1457	