

State of New Mexico
Energy, Minerals and Natural Resources Department.

Form C-101
Revised 1-1-89

OIL CONSERVATION DIVISION

P.O. Box 2088
Santa Fe, New Mexico 87504-2088

RECEIVED

1993

API NO. (assigned by OCD on New Wells)

30-016-27334

5. Indicate Type of Lease

STATE ☒

FEE ☐

6. State Oil & Gas Lease No.

V-3479

7. Lease Name or Unit Agreement Name

Pinnacle State

8. Well No.

14

9. Pool name or Wildcat

E. Herradura Bend, Delaware

APPLICATION FOR PERMIT TO DRILL, DEEPEN, OR PLUG BACK

1a. Type of Work:

DRILL ☒

RE-ENTER ☐

DEEPEN ☐

PLUG BACK ☐

b. Type of Well:

OIL
WELL ☒

GAS
WELL ☐

OTHER ☐

SINGLE
ZONE ☐

MULTIPLE
ZONE ☐

2. Name of Operator

Fortson Oil Company

3. Address of Operator

301 Commerce St., Suite 3301 Fort Worth, Texas 76102

4. Well Location

Unit Letter

H

: 1980

Feet From The

North

Line and

990

Feet From The

East

Line

Section

36

Township

22S

Range

28E

NMPM

Eddy

County

10. Proposed Depth

6500'

11. Formation

Delaware

12. Rotary or C.T.

Rotary

13. Elevations (Show whether DF, RT, GR, etc.)

3129' GL

14. Kind & Status Plug. Boon
State, Current

15. Drilling Contractor

Peterson Drilling

16. Approx. Date Work will start

2/15/93

17.

PROPOSED CASING AND CEMENT PROGRAM

SIZE OF HOLE	SIZE OF CASING	WEIGHT PER FOOT	SETTING DEPTH	SACKS OF CEMENT	EST. TOP
12-1/4"	8-5/8"	24	500'	400	Surf.
7-7/8"	5-1/2"	15.5	6500'	1425	Surf.

1. With a fresh water mud, drill a 12-1/4" hole to 500'.
2. Cement in 8-5/8" surf csg w/400 sx cmt, circ to surf. WOC 12 hrs.
3. With a 10-10.2 ppg salt mud, drill a 7-7/8" hole to 6500' TD.
4. After open hole logging, run 5-1/2" 15.5#/ft J-55 csg to 6500' & cmt w/1425 sx.
5. WOC 24 hrs. minimum.
6. Complete as a Delaware producer.

BOP sketch attached.

IN ABOVE SPACE DESCRIBE PROPOSED PROGRAM: IF PROPOSAL IS TO DEEPEN OR PLUG BACK, GIVE DATA ON PRESENT PRODUCTIVE ZONE AND PROPOSED NEW PRODUCTIVE ZONE. GIVE BLOWOUT PREVENTER PROGRAM, IF ANY.

I hereby certify that the information above is true and complete to the best of my knowledge and belief.

SIGNATURE John S. Tittel TITLE Geologist

DATE 1/13/93

(817)

TELEPHONE NO. 335-5641

TYPE OR PRINT NAME John S. Tittel

(This space for State Use)

APPROVED BY Mark Kelly TITLE Geologist

DATE 3-1-93

180 DAYS

3-26-93

UNDERWAY

CONDITIONS OF APPROVAL, IF ANY:

OIL CONSERVATION DIVISION

P.O. Box 2088
Santa Fe, New Mexico 87504-2088

DISTRICT I
P.O. Box 1980, Hobbs, NM 88240

DISTRICT II
P.O. Drawer DD, Artesia, NM 88210

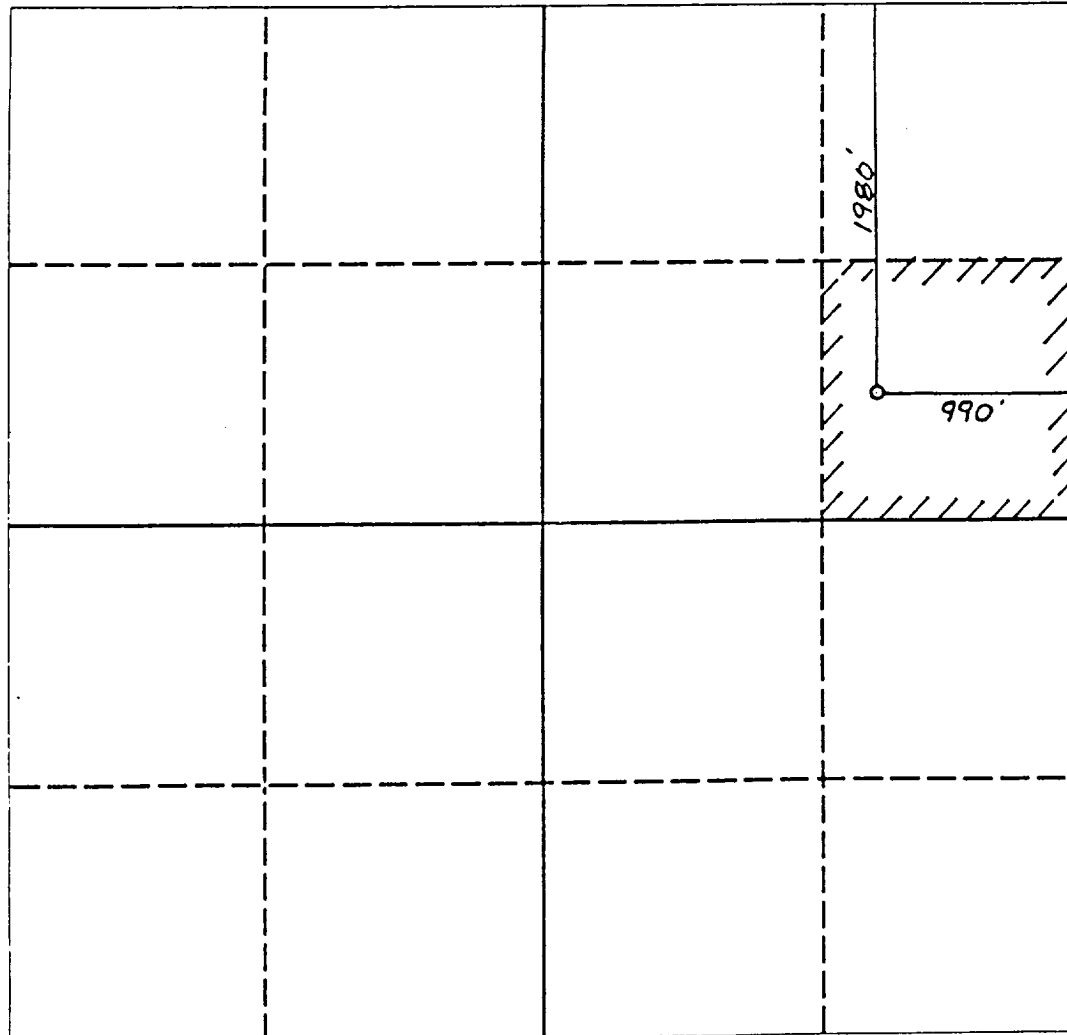
DISTRICT III
1000 Rio Brazos Rd., Aztec, NM 87410

WELL LOCATION AND ACREAGE DEDICATION PLAT

All Distances must be from the outer boundaries of the section

Operator FORTSON OIL COMPANY			Lease PINNACLE STATE		Well No. 14
Unit Letter H	Section 36	Township 22 SOUTH	Range 28 EAST	County EDDY COUNTY, NM	
Actual Footage Location of Well: 1980 feet from the NORTH line and 990 feet from the EAST line					
Ground level Elev. 3129.	Producing Formation DELAWARE	Pool E. HERRADURA BEND, DELAWARE		Dedicated Acreage: 40 Acres	

- Outline the acreage dedicated to the subject well by colored pencil or hatchure marks on the plat below.
- If more than one lease is dedicated to the well, outline each and identify the ownership thereof (both as to working interest and royalty).
- If more than one lease of different ownership is dedicated to the well, have the interest of all owners been consolidated by communitization, unitization, force-pooling, etc.?
☐ Yes ☐ No If answer is "yes" type of consolidation _____
If answer is "no" list the owners and tract descriptions which have actually been consolidated. (Use reverse side of this form if neccessary.)
No allowable will be assigned to the well until all interests have been consolidated (by communitization, unitization, forced-pooling, or otherwise) or until a non-standard unit, eliminating such interest, has been approved by the Division.



OPERATOR CERTIFICATION

I hereby certify that the information contained herein is true and complete to the best of my knowledge and belief.

Signature: *John S. Tittel*
Printed Name: **JOHN S. TITTL**
Position: **GEOLOGIST**
Company: **FORTSON OIL COMPANY**
Date: **1/13/93**

SURVEYOR CERTIFICATION

I hereby certify that the well location shown on this plat was plotted from field notes of actual surveys made by me or under my supervision, and that the same is true and correct to the best of my knowledge and belief.

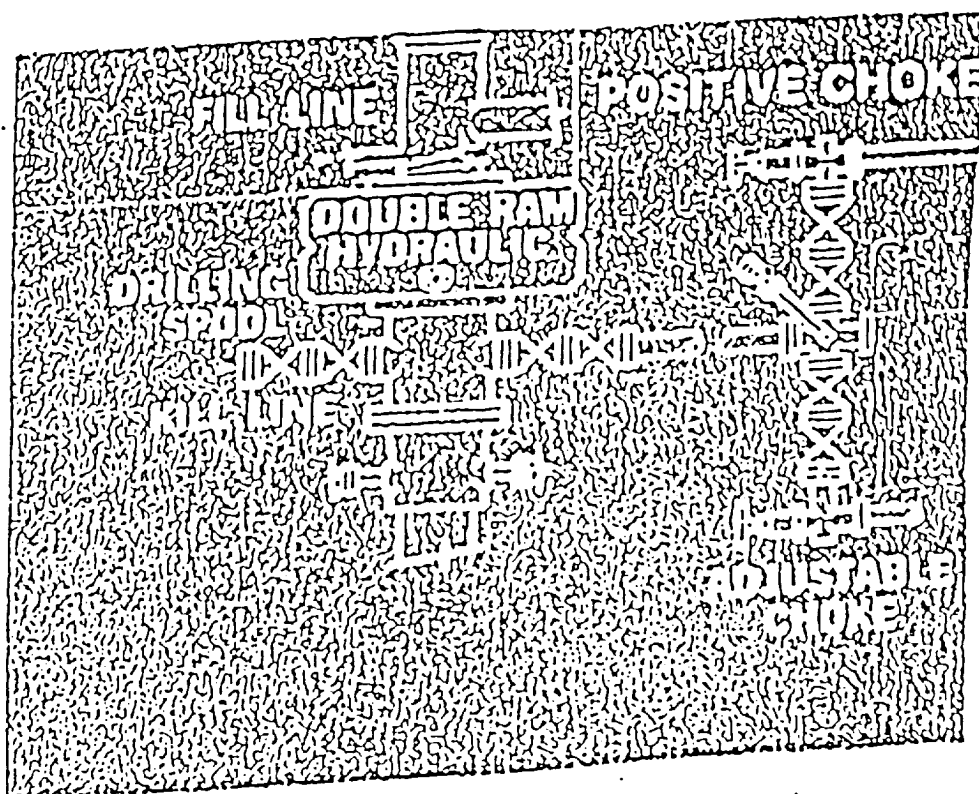
Date Surveyed
JANUARY 9, 1993

Signature & Seal of Professional Surveyor
John S. Tittel
NEW MEXICO
REGISTERED PROFESSIONAL SURVEYOR
NO. 5442

BOP Description

Peterson Drilling Company

Rig #2



Working Pressure - 3000 psi