

OIL CONSERVATION DIVISION

P.O. Box 2088
Santa Fe, New Mexico 87504-2088

DISTRICT I

P.O. Box 1980, Hobbs, NM 88240

DISTRICT II

P.O. Drawer DD, Artesia, NM 88210

DISTRICT III

1000 Rio Brazos Rd., Aztec, NM 87410

WELL LOCATION AND ACREAGE DEDICATION PLAT

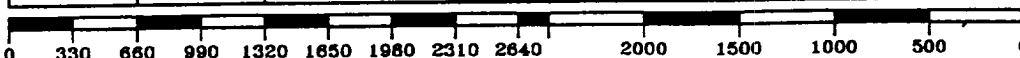
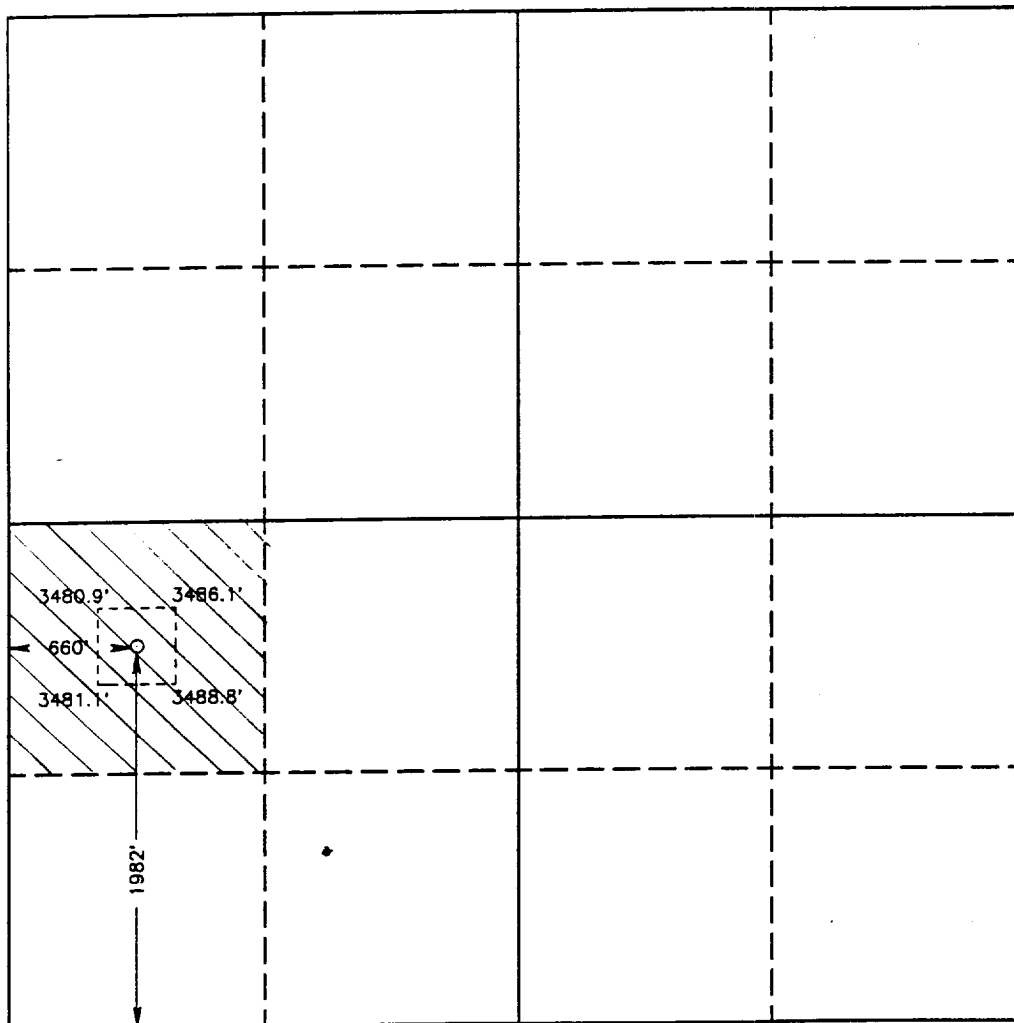
All Distances must be from the outer boundaries of the section

Operator DEVON ENERGY			Lease TODD "25L" FEDERAL		Well No. 12
Unit Letter L	Section 25	Township 23 SOUTH	Range 31 EAST	County EDDY	
Actual Footage Location of Well: 1982 feet from the SOUTH line and 660 feet from the WEST line					
Ground Level Elev. 3486.6'	Producing Formation Delaware	Pool Ingle Wells Delaware			Dedicated Acreage: 40 Acres

1. Outline the acreage dedicated to the subject well by colored pencil or hachure marks on the plat below.
2. If more than one lease is dedicated to the well, outline each and identify the ownership thereof (both as to working interest and royalty).
3. If more than one lease of different ownership is dedicated to the well, have the interest of all owners been consolidated by communitization, unitization, force-pooling, etc.?
☐ Yes ☐ No If answer is "yes" type of consolidation _____

If answer is "no" list of owners and tract descriptions which have actually been consolidated. (Use reverse side of this form necessary.)

No allowable will be assigned to the well unit all interests have been consolidated (by communitization, unitization, forced-pooling, otherwise) or until a non-standard unit, eliminating such interest, has been approved by the Division.



OPERATOR CERTIFICATION

I hereby certify the the information contained herein is true and complete to the best of my knowledge and belief.

Signature

Printed Name

Charles W. Horsman

Position

District Engineer

Company **Devon Energy Corporation (Nevada)**

Date

December 21, 1992

SURVEYOR CERTIFICATION

I hereby certify that the well location shown on this plat was plotted from field notes of actual surveys made by me or under my supervision, and that the same is true and correct to the best of my knowledge and belief.

Date Surveyed

DECEMBER 7, 1992

Signature & Seal of Professional Surveyor

GARY L. JONES
NEW MEXICO
1987
Certificate No. **JOHN W. WEST, 878**
RONALD EIDSON, 3239
GARY L. JONES, 7977

92-11-1907