

**OIL CONSERVATION DIVISION**

P.O. Box 2088

Santa Fe, New Mexico 87504-2088

**DISTRICT I**

P.O. Box 1980, Hobbs, NM 88240

**DISTRICT II**

P.O. Drawer DD, Artesia, NM 88210

**DISTRICT III**

1000 Rio Brazos Rd., Aztec, NM 87410

**WELL LOCATION AND ACREAGE DEDICATION PLAT**

All Distances must be from the outer boundaries of the section

Operator <b>DEVON ENERGY</b>			Lease <b>TODD "25M" FEDERAL</b>		Well No. <b>13</b>
Unit Letter <b>M</b>	Section <b>25</b>	Township <b>23 SOUTH</b>	Range <b>31 EAST</b>	County <b>NMPM</b>	<b>EDDY</b>

Actual Footage Location of Well:

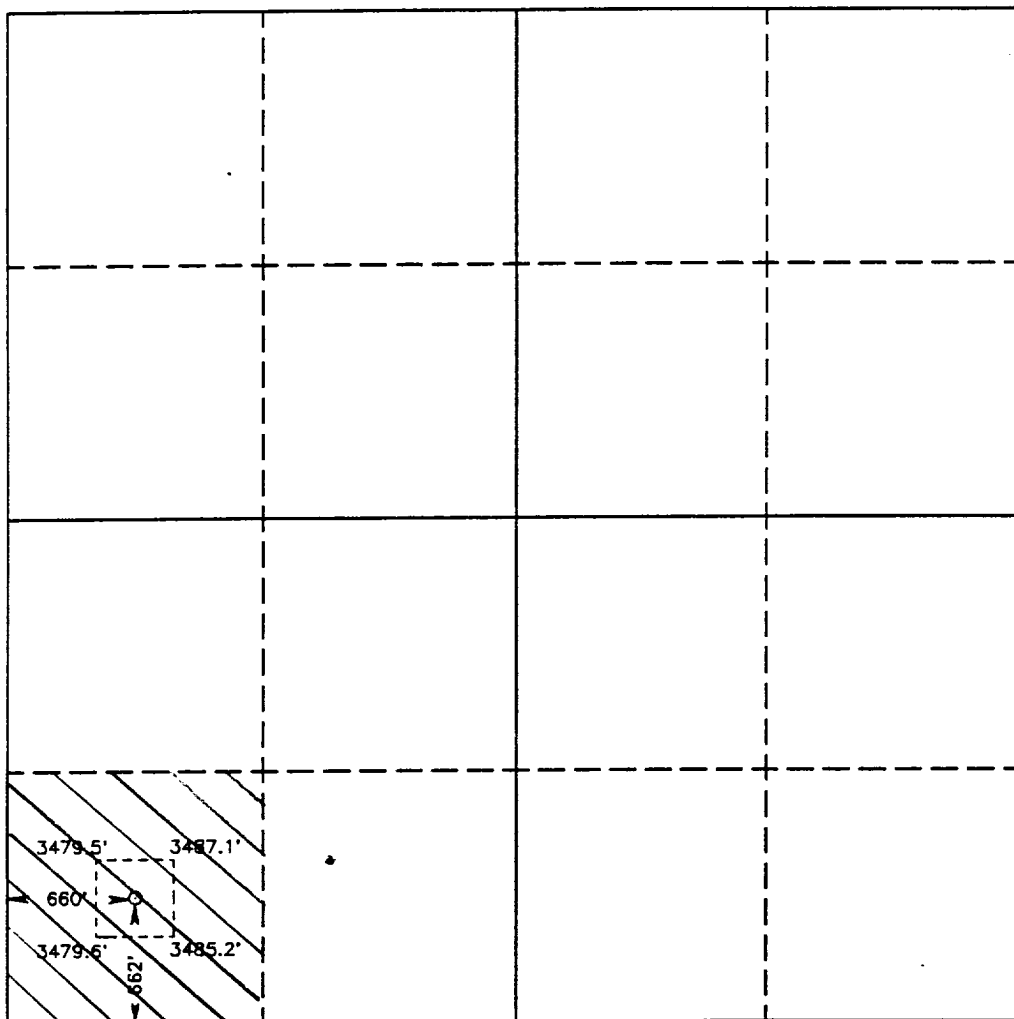
662 feet from the <b>SOUTH</b> line and		660 feet from the <b>WEST</b> line	
Ground Level Elev. <b>3480.3'</b>	Producing Formation <b>Delaware</b>	Pool <b>Ingle Wells Delaware</b>	Dedicated Acreage: <b>40 Acres</b>

1. Outline the acreage dedicated to the subject well by colored pencil or hatchure marks on the plat below.
2. If more than one lease is dedicated to the well, outline each and identify the ownership thereof (both as to working interest and royalty).
3. If more than one lease of different ownership is dedicated to the well, have the interest of all owners been consolidated by communitization, unitization, force-pooling, etc.?

☐ Yes ☐ No If answer is "yes" type of consolidation \_\_\_\_\_

If answer is "no" list of owners and tract descriptions which have actually been consolidated. (Use reverse side of this form necessary. \_\_\_\_\_)

No allowable will be assigned to the well unit all interests have been consolidated (by communitization, unitization, forced-pooling, otherwise) or until a non-standard unit, eliminating such interest, has been approved by the Division.



**OPERATOR CERTIFICATION**

I hereby certify the the information contained herein is true and complete to the best of my knowledge and belief.

Signature

Printed Name

**Charles W. Horsman**

Position

**District Engineer**

Company **Devon Energy Corporation (Nevada)**

Date

**December 21, 1992**

**SURVEYOR CERTIFICATION**

I hereby certify that the well location shown on this plat was plotted from field notes of actual surveys made by me or under my supervision, and that the same is true and correct to the best of my knowledge and belief.

Date Surveyed

**DECEMBER 7, 1992**

Signature & Seal of Professional Surveyor

Certificate No. **JOHN W. WEST 876**

**RONALD J. EIDSON 8238**

**GARY C. JONES 7977**

**92-11-1908**