

OIL CONSERVATION DIVISION

P.O. Box 2088
Santa Fe, New Mexico 87504-2088

DISTRICT I

P.O. Box 1980, Hobbs, NM 88240

DISTRICT II

P.O. Drawer DD, Artesia, NM 88210

DISTRICT III

1000 Rio Brazos Rd., Artec, NM 87410

WELL LOCATION AND ACREAGE DEDICATION PLAT

All Distances must be from the outer boundaries of the section

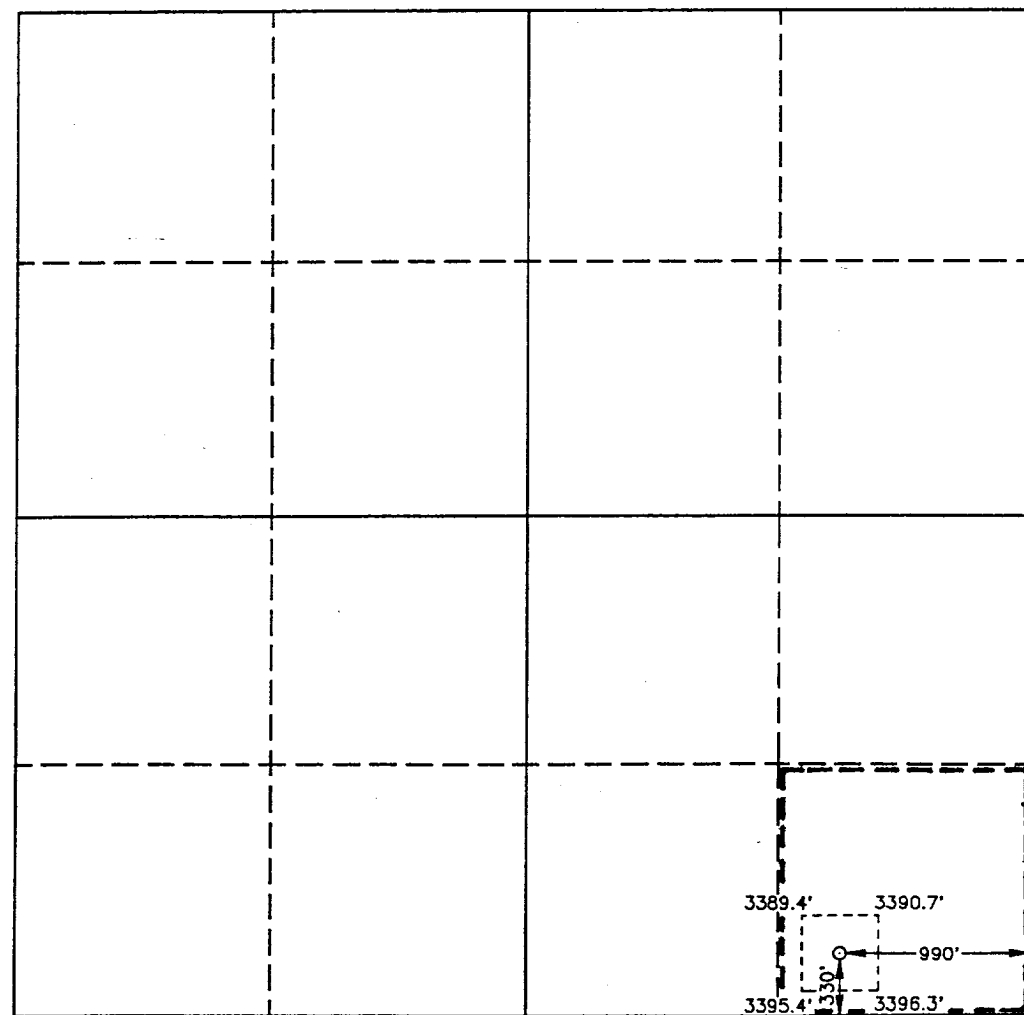
Operator POGO PRODUCING CO.			Lease PURE GOLD D		Well No. 16
Unit Letter P	Section 28	Township 23 SOUTH	Range 31 EAST	NMPM	County EDDY
Actual Footage Location of Well:					
330 feet from the SOUTH line and		990 feet from the EAST line			
Ground Level Elev. 3396.4'	Producing Formation DELAWARE	Pool UNDESIGNATED DELAWARE	Dedicated Acreage: 40 Acres		

- Outline the acreage dedicated to the subject well by colored pencil or hatchure marks on the plat below.
- If more than one lease is dedicated to the well, outline each and identify the ownership thereof (both as to working interest and royalty).
- If more than one lease of different ownership is dedicated to the well, have the interest of all owners been consolidated by communitization, unitization, force-pooling, etc.?

☐ Yes ☐ No If answer is "yes" type of consolidation _____

If answer is "no" list of owners and tract descriptions which have actually been consolidated. (Use reverse side of this form necessary.) _____

No allowable will be assigned to the well unit all interests have been consolidated (by communitization, unitization, forced-pooling, otherwise) or until a non-standard unit, eliminating such interest, has been approved by the Division.



OPERATOR CERTIFICATION

I hereby certify that the information contained herein is true and complete to the best of my knowledge and belief.

Signature
Richard L. Wright

Printed Name
Richard L. Wright

Position
Division Operations Supr.

Company
POGO PRODUCING COMPANY

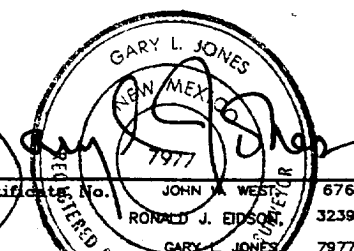
Date
FEBRUARY 25, 1993

SURVEYOR CERTIFICATION

I hereby certify that the well location shown on this plat was plotted from field notes of actual surveys made by me or under my supervision, and that the same is true and correct to the best of my knowledge and belief.

Date Surveyed
FEBRUARY 5, 1993

Signature & Seal of
Professional Surveyor


Certificate No. **JOHN A. WEST 676**
RONALD J. EIDSON 3239
GARY L. JONES 7977