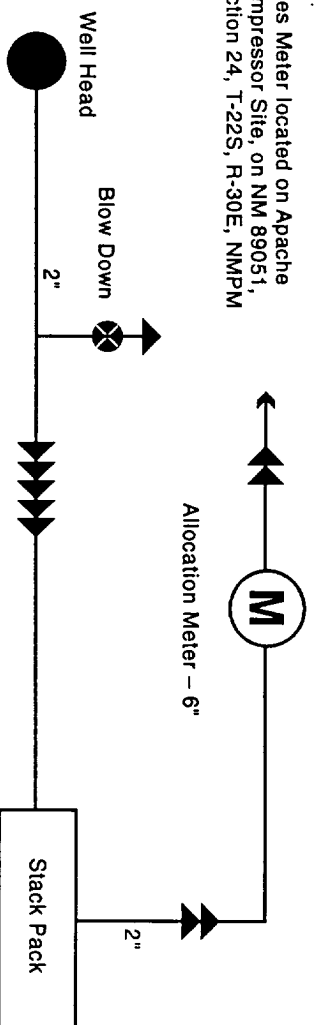


Sales Meter located on Apache Compressor Site, on NM 89051, Section 24, T-22S, R-30E, NMMPM



- PRODUCTION SYSTEM - OPEN**
- Oil sales by tank gauge to tank truck
 - Seal requirements:

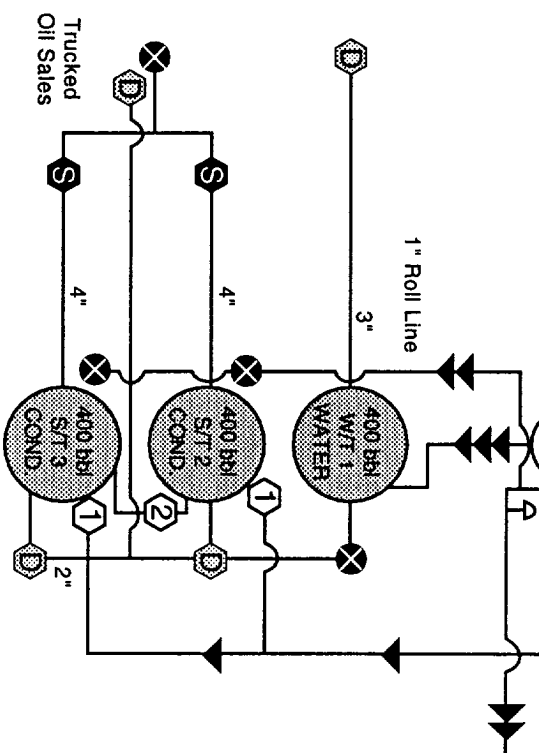
- PRODUCTION PHASE**
- 1 Fill Valves Open
 - 2 Equalizer Valve Open
 - 3 Tank Drain Valves Closed
 - 4 Sales Valves Sealed Closed

- SALES PHASE - SALES FROM ST-3**
- 1 Fill Valve ON ST-3 Sealed Closed
 - 2 Equalizer Valve Sealed Closed
 - 3 All Drain Valves Sealed Closed
 - 4 Sales Valve on ST-2 Sealed Closed

NOTE: Valves on Roll Line are 1"

LEGEND

- Sealed Valve
- Sales Valve
- Drain Valve
- Valve
- Oil
- Gas
- Water
- Oil & Water
- Well Head Fluids



Note: Site Security Plan Location:

MITCHELL ENERGY CORPORATION
P. O. BOX 4000
THE WOODLANDS, TX 77387-4000

NOTE: All lines are 2 inch unless otherwise specified. There are NO buried lines.

Revised 10-22-96

MITCHELL ENERGY CORPORATION
P.O. BOX 4000
THE WOODLANDS, TEXAS 77387-4000
(713) 377-5500

SITE FACILITY DIAGRAM
Lease NM - 89051
Apache 24 Fed #1
Los Medanos (Morrow) Field
Unit P, Sec. 24 T-22S/R-30E

SCALE: NOT TO SCALE DATE: 1-08-96