

OIL CONSERVATION DIVISION

P.O. Box 2088  
Santa Fe, New Mexico 87504-2088

DISTRICT I

P.O. Box 1980, Hobbs, NM 88240

DISTRICT II

P.O. Drawer DD, Artesia, NM 88210

DISTRICT III

1000 Rio Brazos Rd., Aztec, NM 87410

WELL LOCATION AND ACREAGE DEDICATION PLAT

All Distances must be from the outer boundaries of the section

Operator DEVON ENERGY CORP.			Lease BARCLAY 11-B FEDERAL		Well No. 2
Unit Letter B	Section 11	Township 23 SOUTH	Range 31 EAST	County EDDY	

Actual Footage Location of Well:

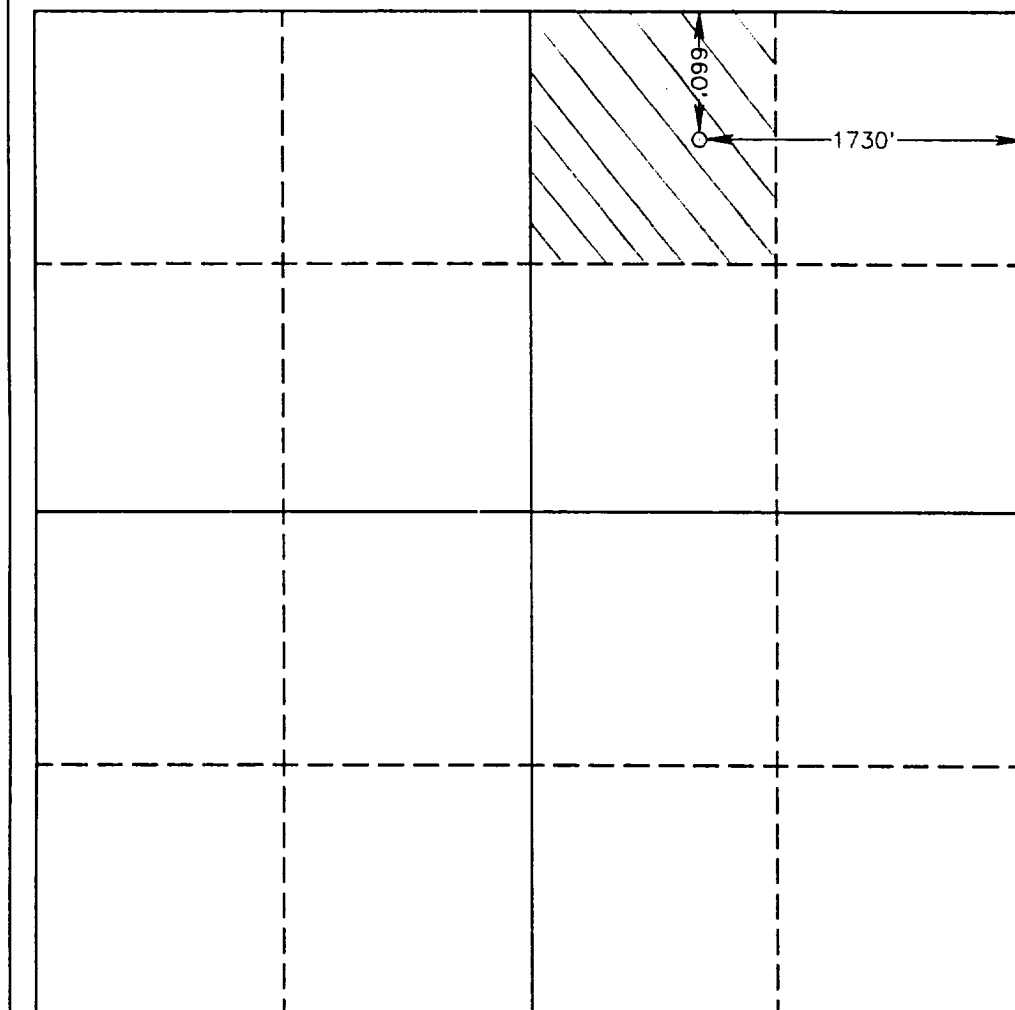
660 feet from the NORTH line and		1730 feet from the EAST line	
Ground Level Elev. 3445.3'	Producing Formation Delaware	Pool Ingle Wells Delaware	Dedicated Acreage: 40 Acres

1. Outline the acreage dedicated to the subject well by colored pencil or hachure marks on the plat below.
2. If more than one lease is dedicated to the well, outline each and identify the ownership thereof (both as to working interest and royalty).
3. If more than one lease of different ownership is dedicated to the well, have the interest of all owners been consolidated by communitization, unitization, force-pooling, etc.?

☐ Yes ☐ No If answer is "yes" type of consolidation \_\_\_\_\_

If answer is "no" list of owners and tract descriptions which have actually been consolidated. (Use reverse side of this form necessary.)

No allowable will be assigned to the well unit all interests have been consolidated (by communitization, unitization, forced-pooling, otherwise) or until a non-standard unit, eliminating such interest, has been approved by the Division.



0 330 660 990 1320 1650 1980 2310 2640 2000 1500 1000 500 0

OPERATOR CERTIFICATION

I hereby certify the the information contained herein is true and complete to the best of my knowledge and belief.

Signature  
*Charles W. Horsman*  
Printed Name  
Charles W. Horsman  
Position  
District Engineer  
Company  
Devon Energy Corporation (Nevada)  
Date  
June 15, 1993

SURVEYOR CERTIFICATION

I hereby certify that the well location shown on this plat was plotted from field notes of actual surveys made by me or under my supervision, and that the same is true and correct to the best of my knowledge and belief.

Date Surveyed  
JUNE 4, 1993

Signature & Seal of  
Professional Surveyor  
  
Certificate No. 876  
JOHN W. WEST, 876  
RONALD C. HEDSON, 3239  
JOHN W. GABRIEL JONES, 7977

93-11-0767