

Submit to Appropriate
District Office
State Lease - 4 copies
Fee Lease - 3 copies

State of New Mexico
Energy, Minerals and Natural Resources Department

EXHIBIT #2

Form C-102
Revised 1-1-89

OIL CONSERVATION DIVISION

P.O. Box 2088
Santa Fe, New Mexico 87504-2088

DISTRICT I

P.O. Box 1980, Hobbs, NM 88240

DISTRICT II

P.O. Drawer DD, Artesia, NM 88210

DISTRICT III

1000 Rio Brazos Rd., Aztec, NM 87410

WELL LOCATION AND ACREAGE DEDICATION PLAT

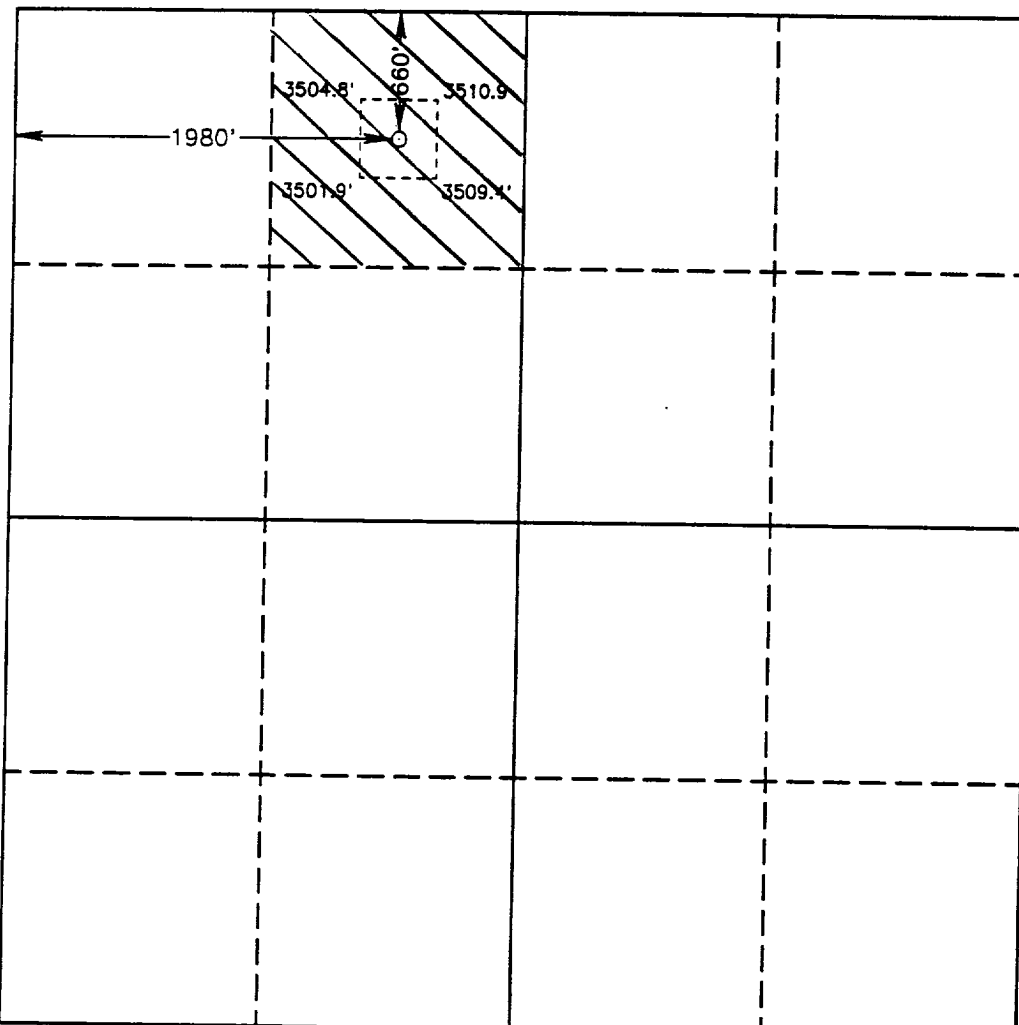
All Distances must be from the outer boundaries of the section

| | | | | | |
|---|---------------------------------|------------------------------|----------------------------|------|--------------------------------|
| Operator DEVON ENERGY CORP. | | | Lease TODD 25-C FEDERAL | | Well No. 3 |
| Unit Letter C | Section 25 | Township 23 SOUTH | Range 31 EAST | NMPM | County EDDY |
| Actual Footage Location of Well: 660 feet from the NORTH line and 1980 feet from the WEST line | | | | | |
| Ground Level Elev. 3508.1' | Producing Formation Delaware | Pool Ingle Wells Delaware | | | Dedicated Acreage: 40 Acres |

1. Outline the acreage dedicated to the subject well by colored pencil or hatchure marks on the plat below.
2. If more than one lease is dedicated to the well, outline each and identify the ownership thereof (both as to working interest and royalty).
3. If more than one lease of different ownership is dedicated to the well, have the interest of all owners been consolidated by communitization, unitization, force-pooling, etc.?
☐ Yes ☐ No If answer is "yes" type of consolidation _____

If answer is "no" list of owners and tract descriptions which have actually been consolidated. (Use reverse side of this form necessary.)

No allowable will be assigned to the well unit all interests have been consolidated (by communitization, unitization, forced-pooling, otherwise) or until a non-standard unit, eliminating such interest, has been approved by the Division.



OPERATOR CERTIFICATION

I hereby certify the the information contained herein is true and complete to the best of my knowledge and belief.

Signature

Charles W. Horsman

Printed Name

Charles W. Horsman

Position

District Engineer
Company Devon Energy
Corporation (Nevada)

Date

May 24, 1993

SURVEYOR CERTIFICATION

I hereby certify that the well location shown on this plat was plotted from field notes of actual surveys made by me or under my supervision, and that the same is true and correct to the best of my knowledge and belief.

Date Surveyed

MAY 13, 1993

Signature of Registered Professional Surveyor

REGISTERED LAND SURVEYOR
No. 3239
GARY L. JONES, 7977

Certificate No. 876

RENEWED BY GARY L. JONES, 3239

93-11-0792