

State of New Mexico  
Energy, Minerals and Natural Resources Department

Form C-102  
Revised 1-1-89

OIL CONSERVATION DIVISION

P.O. Box 2088  
Santa Fe, New Mexico 87504-2088

Submit to Appropriate  
District Office  
State Lease - 4 copies  
Fee Lease - 3 copies

DISTRICT I  
P.O. Box 1980, Hobbs, NM 88240

DISTRICT II  
P.O. Drawer DD, Artesia, NM 88210

DISTRICT III  
1000 Rio Brazos Rd., Aztec, NM 87410

WELL LOCATION AND ACREAGE DEDICATION PLAT

All Distances must be from the outer boundaries of the section

Operator <b>FORTSON OIL COMPANY</b>		Lease <b>PINNACLE STATE</b>		Well No. <b>13</b>
Unit Letter <b>0</b>	Section <b>36</b>	Township <b>22 SOUTH</b>	Range <b>28 EAST</b>	County <b>EDDY COUNTY, NM</b>
Actual Footage Location of Well: <b>2310</b> feet from the <b>EAST</b> line and <b>330</b> feet from the <b>SOUTH</b> line				
Ground level Elev. <b>3095.</b>	Producing Formation <b>Delaware</b>	Pool <b>E. Herradura Bend</b>	Dedicated Acreage: <b>40</b> Acres	

1. Outline the acreage dedicated to the subject well by colored pencil or hatchure marks on the plat below.

2. If more than one lease is dedicated to the well, outline each and identify the ownership thereof (both as to working interest and royalty).

3. If more than one lease of different ownership is dedicated to the well, have the interest of all owners been consolidated by communization, unitization, force-pooling, etc.?

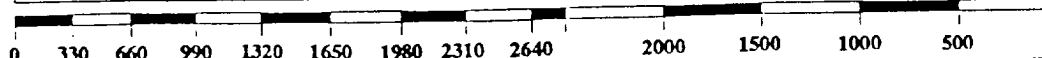
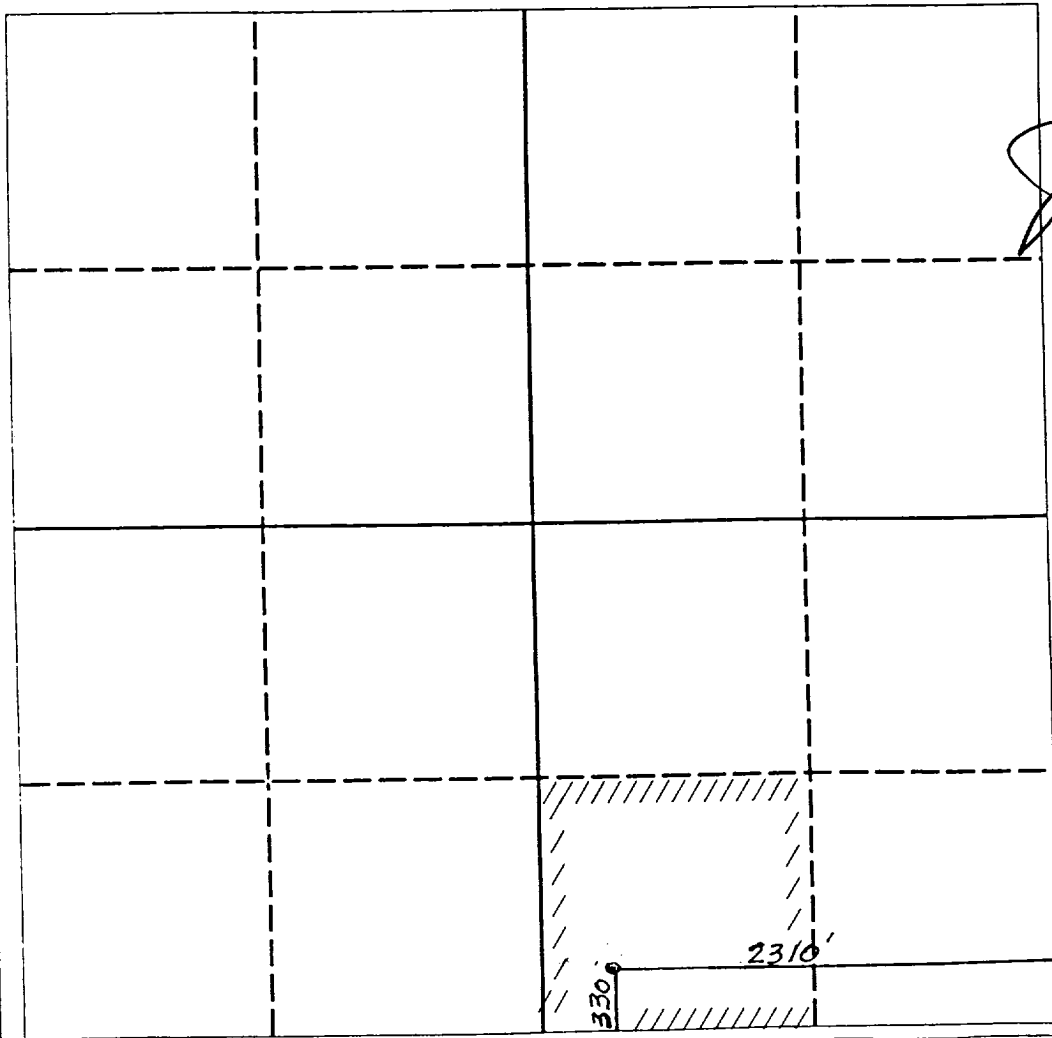
☐ Yes

☐ No

If answer is "yes" type of consolidation

If answer is "no" list the owners and tract descriptions which have actually been consolidated. (Use reverse side of this form if necessary.)

No allowable will be assigned to the well until all interests have been consolidated (by communization, unitization, forced-pooling, or otherwise) or until a non-standard unit, eliminating such interest, has been approved by the Division.



OPERATOR CERTIFICATION

I hereby certify that the information contained herein is true and complete to the best of my knowledge and belief.

Signature

Printed Name

Jude Dixon

Position

Production Technician

Company

Fortson Oil Company

Date

11/30/93

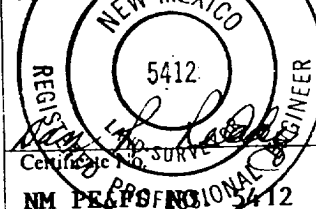
SURVEYOR CERTIFICATION

I hereby certify that the well location shown on this plat was plotted from field notes of actual surveys made by me or under my supervision, and that the same is true and correct to the best of my knowledge and belief.

Date Surveyed

NOVEMBER 20, 1993

Signature & Seal of  
Professional Surveyor



Certificate No. 5412  
NM PROFESSIONAL SURVEYOR