

DISTRICT I

P. O. Box 1980
Hobbs, NM 88240

DISTRICT II

P. O. Drawer DD
Artesia, NM 88210

DISTRICT III

1000 Rio Brazos Rd
Aztec, NM 87410

OIL CONSERVATION DIVISION

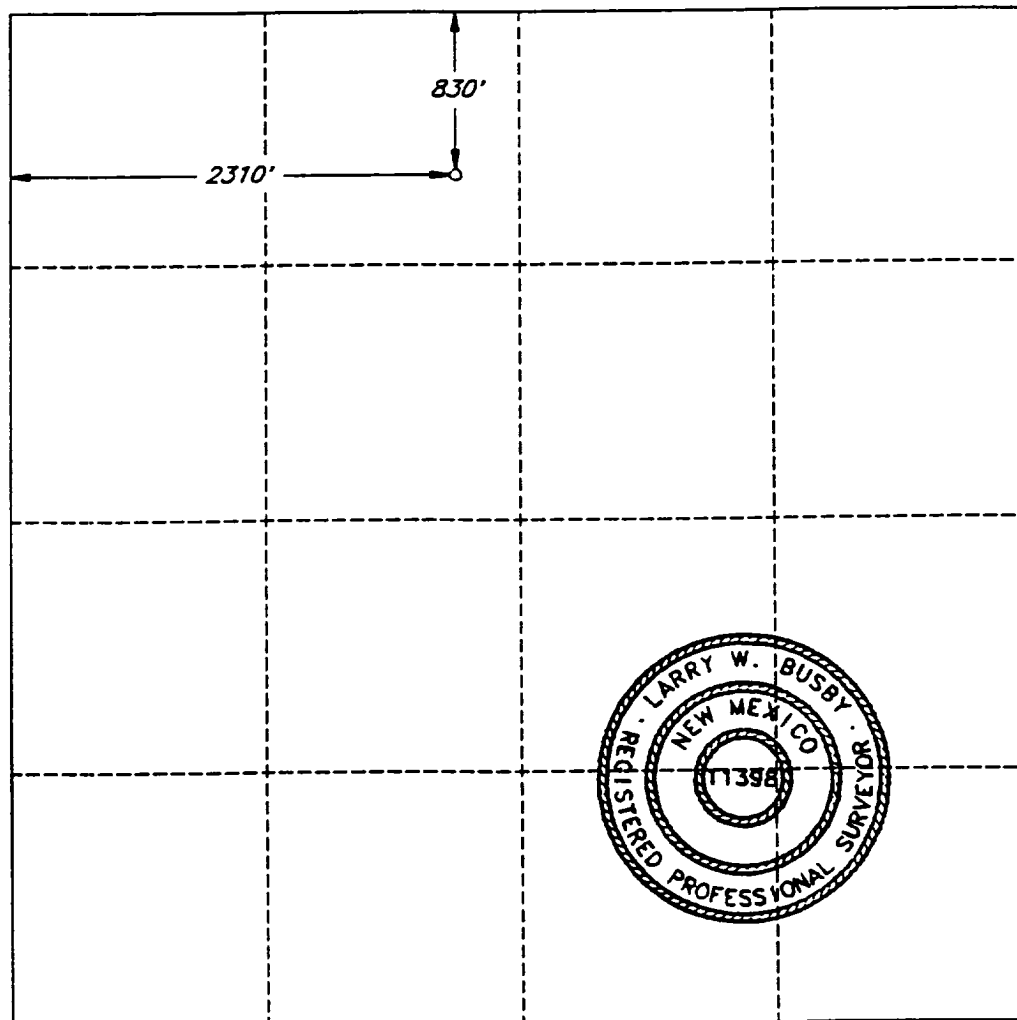
P. O. Box 2088
Santa Fe, New Mexico 87504-2088

WELL LOCATION AND ACREAGE DEDICATION PLAT

All distances must be from the outer boundaries of the section.

Operator SANTA FE ENERGY OPER. PARTNERS, L.P.			Lease James Ranch Unit		Well No. 56
Unit Letter C	Section 17	Township 23 SOUTH	Range 31 EAST, N.M.P.M.	County EDDY	
Actual Footage Location of Well 830 feet from the NORTH line and 2310 feet from the WEST line					
Ground Level Elev. 3321'	Producing Formation Delaware		Pool LOS MEDANOS Sand Dunes, West (Delaware)	40 Acres	

1. Outline the acreage dedicated to the subject well by colored pencil or hachure marks on the plat below.
2. If more than one lease is dedicated to the well, outline each and identify the ownership thereof (both as to working interest and royalty).
3. If more than one lease of different ownership is dedicated to the well, have the interest of all the owners been consolidated by communitization, unitization, forced-pooling, etc.?
☐ Yes ☐ No If answer is "yes", type of consolidation _____
If the answer is "no", list the owners and tract descriptions which have actually been consolidated. (Use the reverse side of this form if necessary.) _____
No allowable will be assigned to the well until all interests have been consolidated (by communitization, unitization, forced-pooling, or otherwise) or until a non-standard unit, eliminating such interest, has been approved by the division.



OPERATOR CERTIFICATION

I hereby certify that the information herein is true and complete to the best of my knowledge and belief.

Signature

Darrell Roberts MTD

Printed Name

Darrell Roberts

Position

Senior Drilling Engineer

Company

Santa Fe Energy Oper.Part.L.P.

Date

November 11, 1993

SURVEYOR CERTIFICATION

I hereby certify that the well location shown on this plat was plotted from field notes of actual surveys made by me or under my supervision, and that the same is true and correct to the best of my knowledge and belief.

Date Surveyed

SEPTEMBER 29, 1993

Signature and Seal of Professional Surveyor

Certificate No.

LARRY W. BUSBY R.P.S. #11398

JOB NO. 99306 / 48SE c/s