

DISTRICT I
P. O. Box 1980
Hobbs, NM 88240

OIL CONSERVATION DIVISION

P. O. Box 2088
Santa Fe, New Mexico 87504-2088

DISTRICT II
P. O. Drawer DD
Artesia, NM 88210

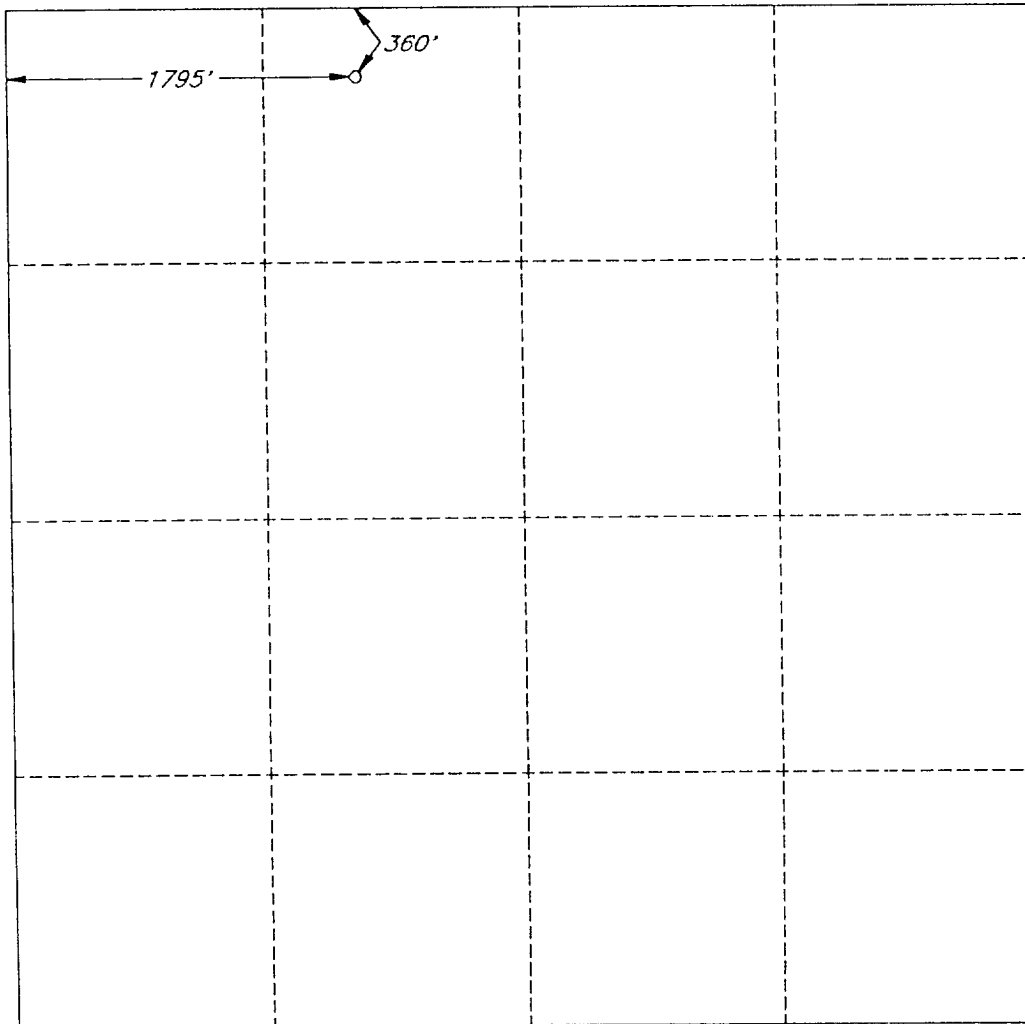
DISTRICT III
1000 Rio Brazos Rd
Aztec, NM 87410

WELL LOCATION AND ACREAGE DEDICATION PLAT

All distances must be from the outer boundaries of the section.

Operator KAISER - FRANCIS OIL COMPANY			Lease PURE GOLD 'B' FEDERAL		Well No. 14
Unit Letter C	Section 20	Township 23 SOUTH	Range 31 EAST, N.M.P.M.	County EDDY	
Actual Footage Location of Well 380 feet from the NORTH line and 1795 feet from the WEST line					
Ground Level Elev. 3325'	Producing Formation Delaware		Pool W. Sand Dunes <i>UNO</i>		Acres 40

1. Outline the acreage dedicated to the subject well by colored pencil or hatchure marks on the plat below.
2. If more than one lease is dedicated to the well, outline each and identify the ownership thereof (both as to working interest and royalty).
3. If more than one lease of different ownership is dedicated to the well, have the interest of all the owners been consolidated by communitization, unitization, forced-pooling, etc?
☐ Yes ☐ No If answer is "yes", type of consolidation _____
If the answer is "no", list the owners and tract descriptions which have actually been consolidated. (Use the reverse side of this form if necessary.) _____
No allowable will be assigned to the well until all interests have been consolidated (by communitization, unitization, forced-pooling, or otherwise) or until a non-standard unit, eliminating such interest, has been approved by the division.



OPERATOR CERTIFICATION

I hereby certify that the information herein is true and complete to the best of my knowledge and belief.

Signature *Milton Griffin*
Printed Name **Milton Griffin**
Position **Operations Engineer**
Company **Kaiser-Francis Oil Co.**
Date **February 25, 1994**

SURVEYOR CERTIFICATION

I hereby certify that the well location shown on this plat was plotted from field notes of actual surveys made by me or under my supervision, and that the same is true and correct to the best of my knowledge and belief.

Date Surveyed **FEBRUARY 15, 1994**
Signature and Seal of Professional Surveyor *Beznor*
BEZNER
NO. 7920
Certificate No. **V. L. BEZNER R.P.S. #7920**
JOB #31904 / 48 SE V.H.B.