

APPLICATION FOR PERMIT TO DRILL, DEEPEN, OR PLUG BACK

1a. TYPE OF WORK

DRILL ☒

DEEPEN ☐

PLUG BACK ☐

b. TYPE OF WELL

OIL  
WELL ☒

GAS  
WELL ☐

OTHER ☐

2. NAME OF OPERATOR

Santa Fe Energy Operating Partners, L.P.

3. ADDRESS OF OPERATOR

550 W. Texas, Suite 1330, Midland, Texas 79701

4. LOCATION OF WELL (Report location clearly and in accordance with any State requirements.)\*

At surface

(D), 1140' FNL and 990' FWL, Sec. 9, T-23S, R-31E

At proposed prod. zone

14. DISTANCE IN MILES AND DIRECTION FROM NEAREST TOWN OR POST OFFICE\*

19 miles East of Loving, New Mexico

15. DISTANCE FROM PROPOSED\*

LOCATION TO NEAREST  
PROPERTY OR LEASE LINE, FT. 990'  
(Also to nearest drlg. unit line, if any)

16. NO. OF ACRES IN LEASE

960

17. NO. OF ACRES ASSIGNED  
TO THIS WELL

40

18. DISTANCE FROM PROPOSED LOCATION\*  
TO NEAREST WELL, DRILLING, COMPLETED,  
OR APPLIED FOR, ON THIS LEASE, FT.

19. PROPOSED DEPTH

8100'

20. ROTARY OR CABLE TOOLS

Rotary

21. ELEVATIONS (Show whether DF, RT, GR, etc.)

3345' GR

22. APPROX. DATE WORK WILL START\*

March 31, 1994

23.

PROPOSED CASING AND CEMENTING PROGRAM

P 111-P Potash

SIZE OF HOLE	SIZE OF CASING	WEIGHT PER FOOT	SETTING DEPTH	QUANTITY OF CEMENT
17-1/2"	13-3/8"	48.0	600'	600 sx to circulate
12-1/4"	8-5/8"	32.0	4200'	2000 sx to circulate
7-7/8"	5-1/2"	15.5 & 17.5 SOS	8100'	TOC 200' inside 8-5/8" casing

We propose to drill to a depth sufficient to test the Delaware formation for oil. If productive, 5-1/2" casing will be cemented to TD. If non-productive, the well will be plugged and abandoned in a manner consistent with Federal Regulations. Specific programs as per Onshore Oil and Gas Order No. 1 are outlined in the following attachments:

Drilling Program

Exhibit A - Operations Plan

Exhibit B - BOP and Choke

Exhibit C - Drilling Fluid Program

Exhibit D - Auxiliary Equipment

Exhibit E - Topo Map of Location

Exhibit F - Plat showing existing wells

Exhibit G - Well location & lease roads

Exhibit H - Well Site Layout

Multi-point Surface Use and Operations Plan

This APD is being resubmitted after being denied at a location 150' North of the proposed location, due to Potash reserves. The present location was suggested by Craig Cranston. It is unorthodox, but has been administratively approved by the NMOCD.

IN ABOVE SPACE DESCRIBE PROPOSED PROGRAM: If proposal is to deepen or plug back, give data on present productive zone and proposed new productive zone. If proposal is to drill or deepen directly, give pertinent data on subsurface locations and measured and true vertical depths. Give blowout preventer program, if any.

24.

SIGNED

Danell Roberts

TITLE

Division Drilling Engineer

DATE Feb. 11, 1994

(This space for Federal or State office use)

PERMIT NO.

APPROVAL DATE

APPROVED BY

Malcolm J. Schnitker

TITLE

Acting ASOC

DATE

APR 5 1994

CONDITIONS OF APPROVAL, IF ANY:

APPROVAL SUBJECT TO  
GENERAL REQUIREMENTS AND  
SPECIAL STIPULATIONS  
ATTACHED

\*See Instructions On Reverse Side

**DISTRICT I**

P. O. Box 1980  
Hobbs, NM 88240

**DISTRICT II**

P. O. Drawer DD  
Artesia, NM 88210

**DISTRICT III**

1000 Rio Brazos Rd  
Aztec, NM 87410

**OIL CONSERVATION DIVISION**

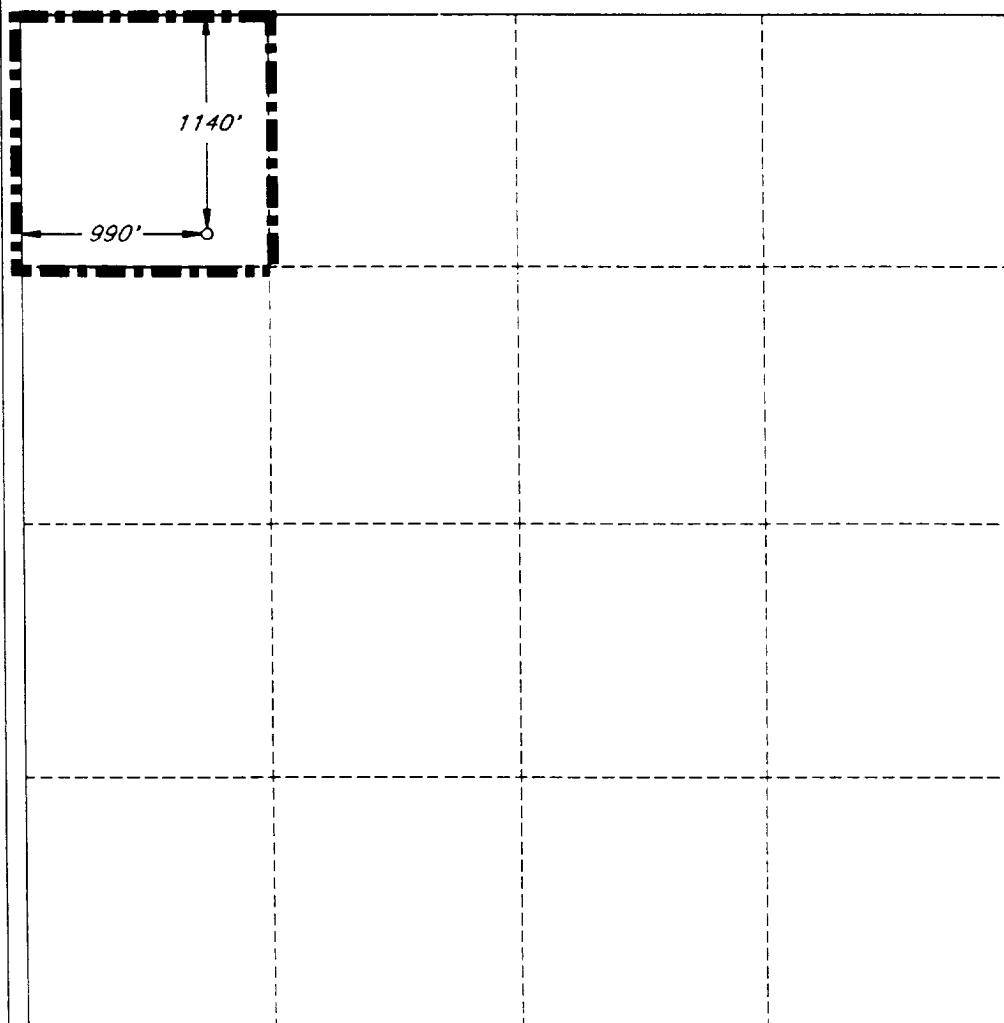
P. O. Box 2088  
Santa Fe, New Mexico 87504-2088

**WELL LOCATION AND ACREAGE DEDICATION PLAT**

All distances must be from the outer boundaries of the section.

Operator <b>SANTA FE ENERGY OPER. PART, L.P.</b>			Lease <b>N. PURE GOLD '9' FED.</b>		Well No. <b>5</b>
Unit Letter <b>D</b>	Section <b>9</b>	Township <b>23 SOUTH</b>	Range <b>31 EAST, N.M.P.M.</b>	County <b>EDDY</b>	
Actual Footage Location of Well <b>1140</b> feet from the <b>NORTH</b> line and <b>990</b> feet from the <b>WEST</b> line					
Ground Level Elev. <b>3345'</b>	Producing Formation <b>Delaware</b>		Pool <b>Los Medanos (Delaware)</b>		<b>40</b> Acres

- Outline the acreage dedicated to the subject well by colored pencil or hatchure marks on the plat below.
- If more than one lease is dedicated to the well, outline each and identify the ownership thereof (both as to working interest and royalty).
- If more than one lease of different ownership is dedicated to the well, have the interest of all the owners been consolidated by communitization, unitization, forced-pooling, etc.?  
☐ Yes ☐ No If answer is "yes", type of consolidation \_\_\_\_\_  
If the answer is "no", list the owners and tract descriptions which have actually been consolidated. (Use the reverse side of this form if necessary.) \_\_\_\_\_  
No allowable will be assigned to the well until all interests have been consolidated (by communitization, unitization, forced-pooling, or otherwise) or until a non-standard unit, eliminating such interest, has been approved by the division.



**OPERATOR CERTIFICATION**

I hereby certify that the information herein is true and complete to the best of my knowledge and belief.

Signature

*Darrell Roberts*

Printed Name

Darrell Roberts

Position

Division Drilling Engineer

Company Santa Fe Energy  
Operating Partners, L.P.

Date

February 11, 1994

**SURVEYOR CERTIFICATION**

I hereby certify that the well location shown on this plat was plotted from field notes of actual surveys made by me or under my supervision, and that the same is true and correct to the best of my knowledge and belief.

Date Surveyed

JANUARY 20, 1994

Signature and Seal of  
Professional Surveyor

*V. Lynn Bezner*

V. LYNN

BEZNER

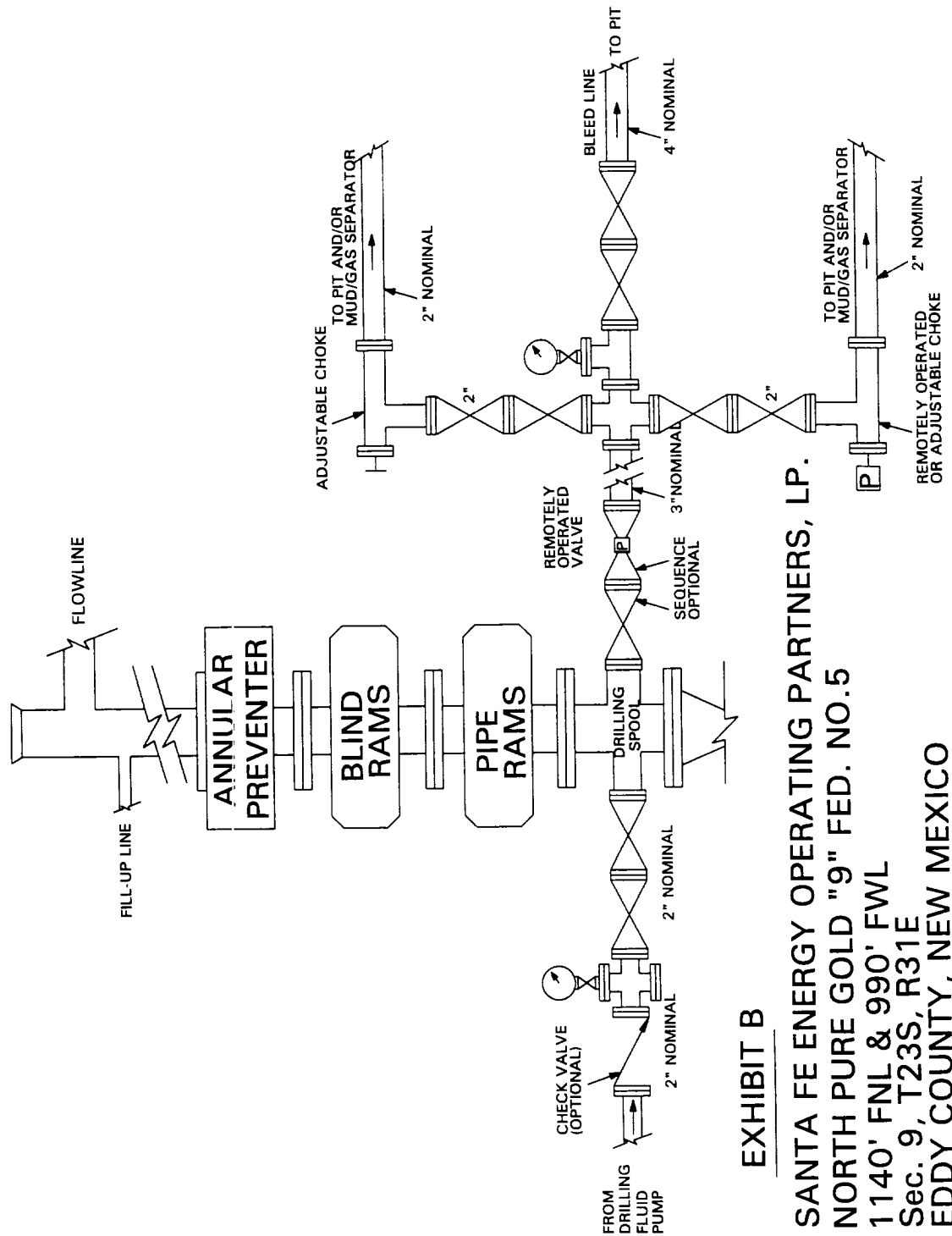
NO. 7920

Certificate No.

V. L. BEZNER, P.S. #7920

JOB #31254/48 SE c/s

# PROPOSED 3-M BOPE AND CHOKE ARRANGEMENT



## EXHIBIT B

SANTA FE ENERGY OPERATING PARTNERS, LP.

NORTH PURE GOLD "9" FED. NO.5

1140' FNL & 990' FWL

Sec. 9, T23S, R31E

EDDY COUNTY, NEW MEXICO