

**NM OIL CONS. COM. ASSON STATES**  
**DRAWER DEPARTMENT OF THE INTERIOR**  
**ARTESIA, NM 88210 OF LAND MANAGEMENT**

**APPLICATION FOR PERMIT TO DRILL OR DEEPEN**

1a. TYPE OF WORK  
DRILL ☒ DEEPEN ☐

b. TYPE OF WELL  
OIL WELL ☒ GAS WELL ☐ OTHER ☐ SINGLE ZONE ☐ MULTIPLE ZONE ☐

2. NAME OF OPERATOR  
Santa Fe Energy Operating Partners, L.P.

3. ADDRESS AND TELEPHONE NO.  
550 W. Texas, Suite 1330, Midland, Texas 79701

4. LOCATION OF WELL (Report location clearly and in accordance with any State requirements.)  
At surface  
(K) 1980' FSL & 2310' FWL, Sec 34, T-23-S, R-31-E  
At proposed prod. zone

14. DISTANCE IN MILES AND DIRECTION FROM NEAREST TOWN OR POST OFFICE\*  
21 miles East of Loving, New Mexico

10. DISTANCE FROM PROPOSED\* LOCATION TO NEAREST PROPERTY OR LEASE LINE, FT. (Also to nearest drilg. unit line, if any)  
1980'

16. NO. OF ACRES IN LEASE  
640

17. NO. OF ACRES ASSIGNED TO THIS WELL  
40

18. DISTANCE FROM PROPOSED LOCATION\* TO NEAREST WELL, DRILLING, COMPLETED, OR APPLIED FOR, ON THIS LEASE, FT.  
1400'

19. PROPOSED DEPTH  
8200

20. ROTARY OR CABLE TOOLS  
Rotary

21. ELEVATIONS (Show whether DF, RT, GR, etc.)  
3451 GR

22. APPROX. DATE WORK WILL START\*  
October 26, 1994

**PROPOSED CASING AND CEMENTING PROGRAM**

SIZE OF HOLE	GRADE SIZE OF CASING	WEIGHT PER FOOT	SETTING DEPTH	QUANTITY OF CEMENT
17-1/2"	H-40 13-3/8"	48.0	600'	600 sx to circulate
12-1/4"	K-55 8-5/8"	32.0	4200'	2000 sx to circulate
7-7/8"	K-55 5-1/2"	15.5 & 17.0	8200'	tie back to 4000'

We propose to drill to a depth sufficient to test the Delaware formation for oil. If productive 5-1/2" casing will be run to TD. If non-productive the well will be plugged and abandoned in a manner consistent with Federal Regulations. Specific programs as per Onshore Oil and Gas Order No. 1 are outlined in the following attachments:

Drilling Program

Exhibit A - Operations Plan  
Exhibit B - BOP and Choke Manifold  
Exhibit C - Drilling Fluid Program  
Exhibit D - Auxiliary Equipment

Exhibit E - Topo Map of Location  
Exhibit F - Map Showing Existing Wells  
Exhibit F (A) - Plat of Location  
Exhibit G - Well Site Layout  
Surface Use and Operations Plan

Post TD-1  
12-29-94  
New Loc & API

IN ABOVE SPACE DESCRIBE PROPOSED PROGRAM: If proposal is to deepen, give data on present productive zone and proposed new productive zone. If proposal is to drill or deepen directionally, give pertinent data on subsurface locations and measured and true vertical depths. Give blowout preventer program, if any.

SIGNED James P. Phil Stinson TITLE Agent for Santa Fe Energy DATE 9-19-94  
(This space for Federal or State office use)

PERMIT NO. \_\_\_\_\_ APPROVAL DATE \_\_\_\_\_  
Application approval does not warrant or certify that the applicant holds legal or equitable title to those rights in the subject lease which would entitle the applicant to conduct operations thereon.  
CONDITIONS OF APPROVAL, IF ANY:

APPROVED BY /s/ Edwin L. Robertson TITLE Acting S.D. DATE 12/1/94

\*See Instructions On Reverse Side

Title 18 U.S.C. Section 1001, makes it a crime for any person knowingly and willfully to make to any department or agency of the United States any false, fictitious or fraudulent statements or representations as to any matter within its jurisdiction.

DISTRICT I  
P. O. Box 1980  
Hobbs, NM 88241-1980

State of New Mexico  
Energy, Minerals, and Natural Resources Department

Form C-102  
Revised 02-10-94

Instructions on back

DISTRICT II  
P. O. Drawer DD  
Artesia, NM 88211-0719

Submit to the Appropriate  
District Office  
State Lease - 4 copies  
Fee Lease - 3 copies

DISTRICT III  
1000 Rio Brazos Rd.  
Aztec, NM 87410

**OIL CONSERVATION DIVISION**  
**P. O. Box 2088**  
**Santa Fe, New Mexico 87504-2088**

☐ AMENDED REPORT

DISTRICT IV  
P. O. Box 2088  
Santa Fe, NM 87507-2088

**WELL LOCATION AND ACREAGE DEDICATION PLAT**

1 API Number		2 Pool Code 53815		3 Pool Name Sand Dunes West (Delaware)		
4 Property Code K		5 Property Name STERLING SILVER '34' FEDERAL			6 Well Number 5	
7 OGRID No.		8 Operator Name SANTA FE ENERGY OPER. PART, L.P.			9 Elevation 3451'	

**10 SURFACE LOCATION**

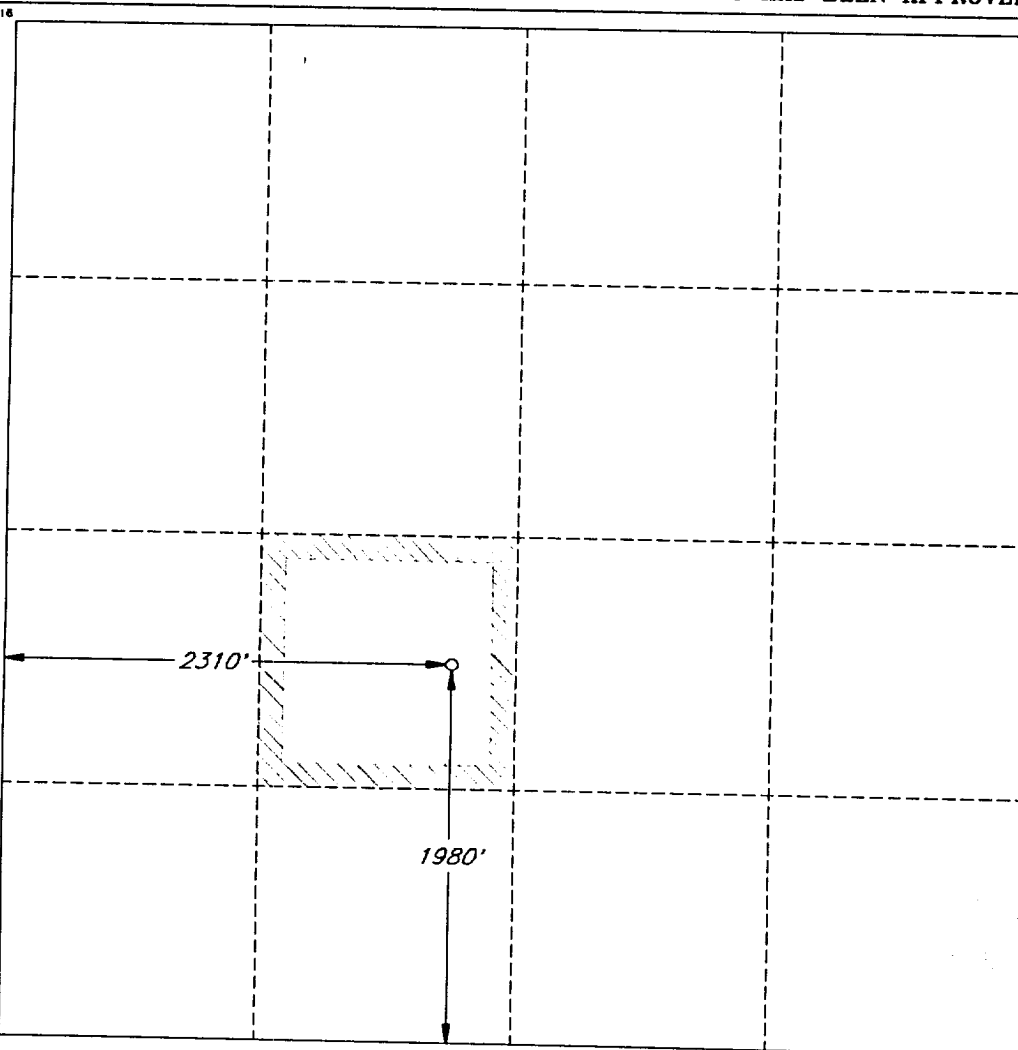
UL or lot no. K	Section 34	Township 23 SOUTH	Range 31 EAST, N.M.P.M.	Lot Ida	Feet from the 1980'	North/South line SOUTH	Feet from the 2310'	East/West line WEST	County EDDY
--------------------	---------------	----------------------	----------------------------	---------	------------------------	---------------------------	------------------------	------------------------	----------------

**"BOTTOM HOLE LOCATION IF DIFFERENT FROM SURFACE**

UL or lot no.	Section	Township	Range	Lot Ida	Feet from the	North/South line	Feet from the	East/West line	County
---------------	---------	----------	-------	---------	---------------	------------------	---------------	----------------	--------

12 Dedicated Acres 40	13 Joint or Infill	14 Consolidation Code	15 Order No.
--------------------------	--------------------	-----------------------	--------------

NO ALLOWABLE WELL BE ASSIGNED TO THIS COMPLETION UNTIL ALL INTERESTS HAVE BEEN CONSOLIDATED OR A NON-STANDARD UNIT HAS BEEN APPROVED BY THE DIVISION



**OPERATOR CERTIFICATION**

I hereby certify that the information contained herein is true and complete to the best of my knowledge and belief.

Signature *James P. (Phil) Stinson*  
Printed Name

James P. (Phil) Stinson

Title

Agent

Date

9-19-94

**SURVEYOR CERTIFICATION**

I hereby certify that the well location shown on this plat was plotted from field notes of actual surveys made by me or under my supervision, and that the same is true and correct to the best of my belief.

Date of Survey  
SEPTEMBER 1, 1994

Signature and Seal of Professional Surveyor  
*V. Lynn Bezner*  
V. LYNN BEZNER  
NO. 7920

Certification  
V. L. BEZNER LAND SURVEYOR #7920

JOB #35239 / 48 SE / V.H.B.

# EXHIBIT B

**BOP AND CHOKE ARRANGEMENT**  
**SANTA FE ENERGY OPERATING PARTNERS, L.P.**  
**STERLING SILVER "34" FED COM #5**  
**1980' FSL & 2310' FWL**  
**SEC 34, T-23-S, R-31-E**  
**EDDY COUNTY, NEW MEXICO**

