

UNITED STATES  
DEPARTMENT OF THE INTERIOR  
BUREAU OF LAND MANAGEMENT

APPLICATION FOR PERMIT TO DRILL OR DEEPEN

1a. TYPE OF WORK

DRILL ☒

DEEPEN ☐

b. TYPE OF WELL

OIL WELL ☒

GAS WELL ☐

OTHER ☐

SINGLE ZONE ☐

MULTIPLE ZONE ☐

2. NAME OF OPERATOR

MARALO INC.

3. ADDRESS AND TELEPHONE NO.

P.O. BOX 832 MIDLAND, TEXAS 79702 Ph. 915-684-7441

4. LOCATION OF WELL (Report location clearly and in accordance with any State requirements)  
At surface 1780' FNL & 1650' FWL SEC. 4 T24S-R29E EDDY CO. NEW MEXICO

At proposed prod. zone

SAME

Unit F

JUL 06 1995

14. DISTANCE IN MILES AND DIRECTION FROM NEAREST TOWN OR POST OFFICE\*

6 miles East Northeast of Malaga New Mexico

15. DISTANCE FROM PROPOSED\* LOCATION TO NEAREST PROPERTY OR LEASE LINE, FT.  
(Also to nearest drlg. unit line, if any)

990'

16. DISTANCE TO LEASE

880'

DIST. 2

18. DISTANCE FROM PROPOSED LOCATION\* TO NEAREST WELL, DRILLING, COMPLETED, OR APPLIED FOR, ON THIS LEASE, FT.

2500'

19. PROPOSED DEPTH

6900'

17. NO. OF ACRES ASSIGNED TO THIS WELL

40

20. ROTARY OR CABLE TOOLS

Rotary

21. ELEVATIONS (Show whether DF, RT, GR, etc.)

GR. 3075'

22. APPROX. DATE WORK WILL START\*

As soon as approved

23. PROPOSED CASING AND CEMENTING PROGRAM

Secretary's Potash

SIZE OF HOLE	GRADE, SIZE OF CASING	WEIGHT PER FOOT	SETTING DEPTH	QUANTITY OF CEMENT
17 1/2"	J-55 13 3/8"	54.5	650	800 Sx Class "C" circulate to surf
12 1/4"	J-55 8 5/8"	32	2700	900 Sx. circulate to surface
7 7/8"	J-55 5 1/2"	15.5	6900	450 sx (TIE BACK)

1. Drill 25" hole to 40' set 40' of conductor cement to suface with Redi-mix.
2. Drill 17 1/2" hole to 650', Run and set 650' of 13 3/8" J-55 54.5# 8-R ST&C casing cement with 800 Sx Class "C" cement. Circulate to surface.
3. Drill 12 1/4" hole to 2700', Run and set 2700' of 8 5/8" J-55 32# 8-R ST&C casing cement with 700 Sx of light cement tail in with 200 Sx Class "C" + 2% CaCl. Circulate cement to surface.
4. Drill 7 7/8" hole to 6900', Run and set 6900' of 5 1/2" J-55 15.5# 8-R LT&C casing cement with 250 Sx light cement tail in with 200 Sx of 50/50 POZ.

Post ID-1  
7-7-95  
New loc + API

IN ABOVE SPACE DESCRIBE PROPOSED PROGRAM: If proposal is to deepen, give data on present productive zone and proposed new productive zone. If proposal is to drill or deepen directionally, give pertinent data on subsurface locations and measured and true vertical depths. Give blowout preventer program, if any.

24.

SIGNED

*Joe T. Janica*

TITLE

Agent

DATE

05/03/95

(This space for Federal or State office use)

PERMIT NO.

APPROVAL DATE

APPROVAL SUBJECT TO  
GENERAL REQUIREMENTS AND  
SPECIAL STIPULATIONS  
ATTACHED

Application approval does not warrant or certify that the applicant holds legal or equitable title to those rights in the subject lease which would enable the applicant to conduct operations thereon.  
CONDITIONS OF APPROVAL, IF ANY:

APPROVED BY

*B. Gilbert J. Lucco*

TITLE

*Acting State Director*

DATE

*6-22-95*

\*See Instructions On Reverse Side

DISTRICT I  
P.O. Box 1980, Hobbs, NM 88240

State of New Mexico  
Energy, Minerals and Natural Resources Department

Form C-102  
Revised February 10, 1994  
Instruction on back  
Submit to Appropriate District Office  
State Lease - 4 Copies  
Fee Lease - 3 Copies

DISTRICT II  
P.O. Drawer DD, Artesia, NM 88210

DISTRICT III  
1000 Rio Brazos Rd., Aztec, NM 87410

DISTRICT IV  
PO BOX 2088, SANTA FE, NM 87504-2088

## OIL CONSERVATION DIVISION

P.O. Box 2088  
Santa Fe, New Mexico 87504-2088

☐ AMENDED REPORT

### WELL LOCATION AND ACREAGE DEDICATION PLAT

API Number <b>30-015-28577</b>	Pool Code <b>96034</b>	Pool Name <b>WILDCAT Group 3</b>
Property Code	Property Name <b>C.F. "4" FEDERAL</b>	Well Number <b>1</b>
OGRID No. <b>014007</b>	Operator Name <b>MARLO INC.</b>	Elevation <b>3075</b>

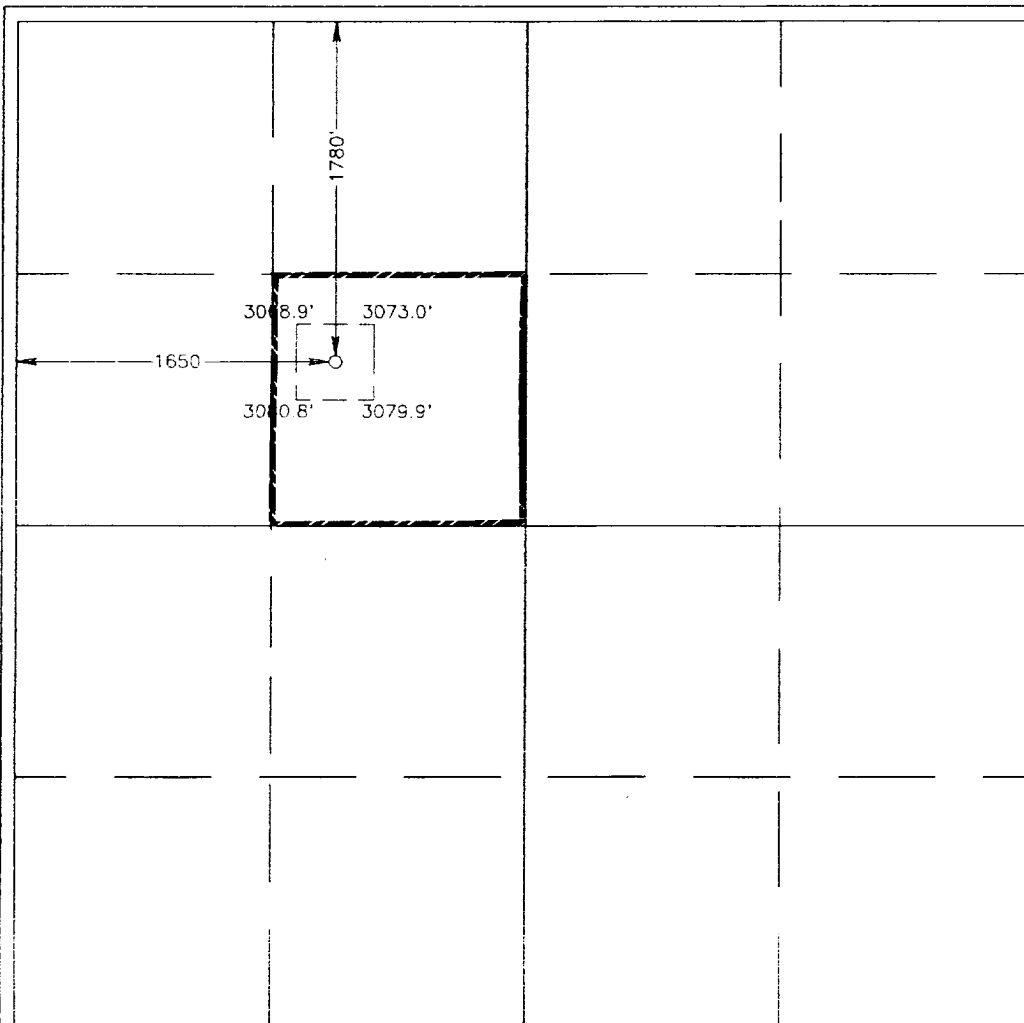
#### Surface Location

UL or lot No. <b>F</b>	Section <b>4</b>	Township <b>24 S</b>	Range <b>29 E</b>	Lot Idn	Feet from the <b>1780</b>	North/South line <b>NORTH</b>	Feet from the <b>1650</b>	East/West line <b>WEST</b>	County <b>EDDY</b>
---------------------------	---------------------	-------------------------	----------------------	---------	------------------------------	----------------------------------	------------------------------	-------------------------------	-----------------------

#### Bottom Hole Location If Different From Surface

UL or lot No.	Section	Township	Range	Lot Idn	Feet from the	North/South line	Feet from the	East/West line	County
Dedicated Acres <b>40</b>	Joint or Infill	Consolidation Code	Order No.						

NO ALLOWABLE WILL BE ASSIGNED TO THIS COMPLETION UNTIL ALL INTERESTS HAVE BEEN CONSOLIDATED  
OR A NON-STANDARD UNIT HAS BEEN APPROVED BY THE DIVISION



#### OPERATOR CERTIFICATION

I hereby certify that the information contained herein is true and complete to the best of my knowledge and belief.

*Joe T. Janica*  
Signature

Joe T. Janica

Printed Name

Agent

Title  
05/03/95

Date

#### SURVEYOR CERTIFICATION

I hereby certify that the well location shown on this plat was plotted from field notes of actual surveys made by me or under my supervision and that the same is true and correct to the best of my belief.

APRIL 25, 1995

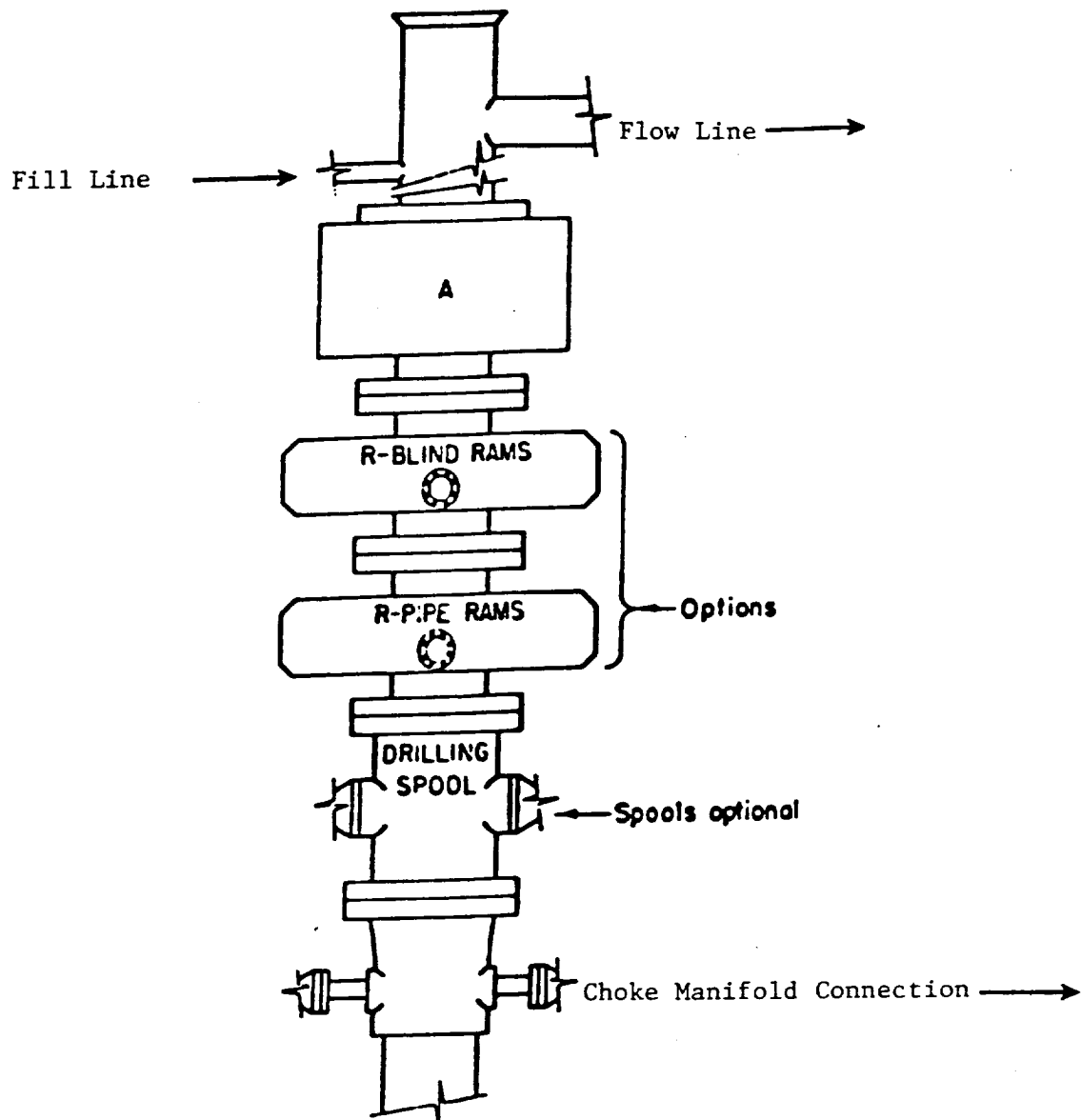
Date Surveyed SJA

Signature & Seal of Professional Surveyor

*David J. Eidson*  
David J. Eidson  
05-03-95  
0647

Certification of Professional Surveyor  
David J. Eidson  
05-03-95  
0647

EXHIBIT "A"



**ARRANGEMENT SRRA**

1500 Series  
5000 PSI WP

EXHIBIT "E"  
SKETCH OF BOP TO BE USED ON  
MARALO INC.  
C.F. "4" FEDERAL # 1  
1780' FNL & 1650' FWL SEC. 4  
T24S-R29E EDDY CO. NM

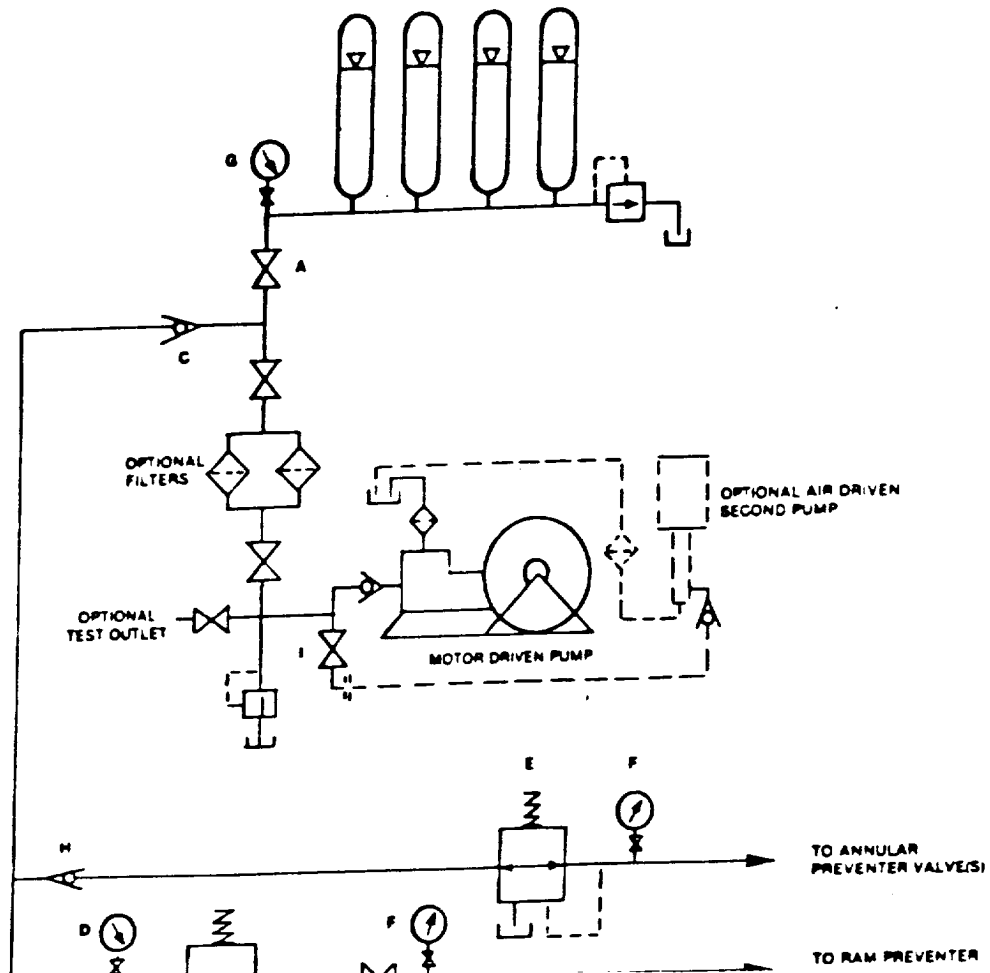
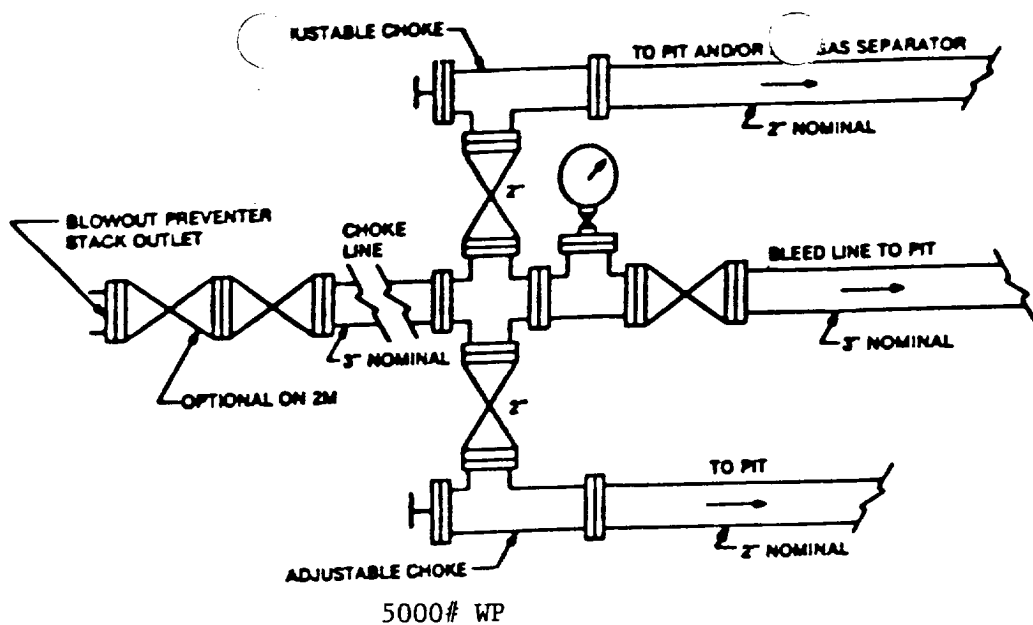


EXHIBIT "E-1"  
 CHOKE MANIFOLD & CLOSING UNIT  
 MARALO INC.  
 C.F. "4" FEDERAL # 1  
 1780' FNL & 1650' FWL SEC. 4  
 T24S-R29E EDDY CO. NM