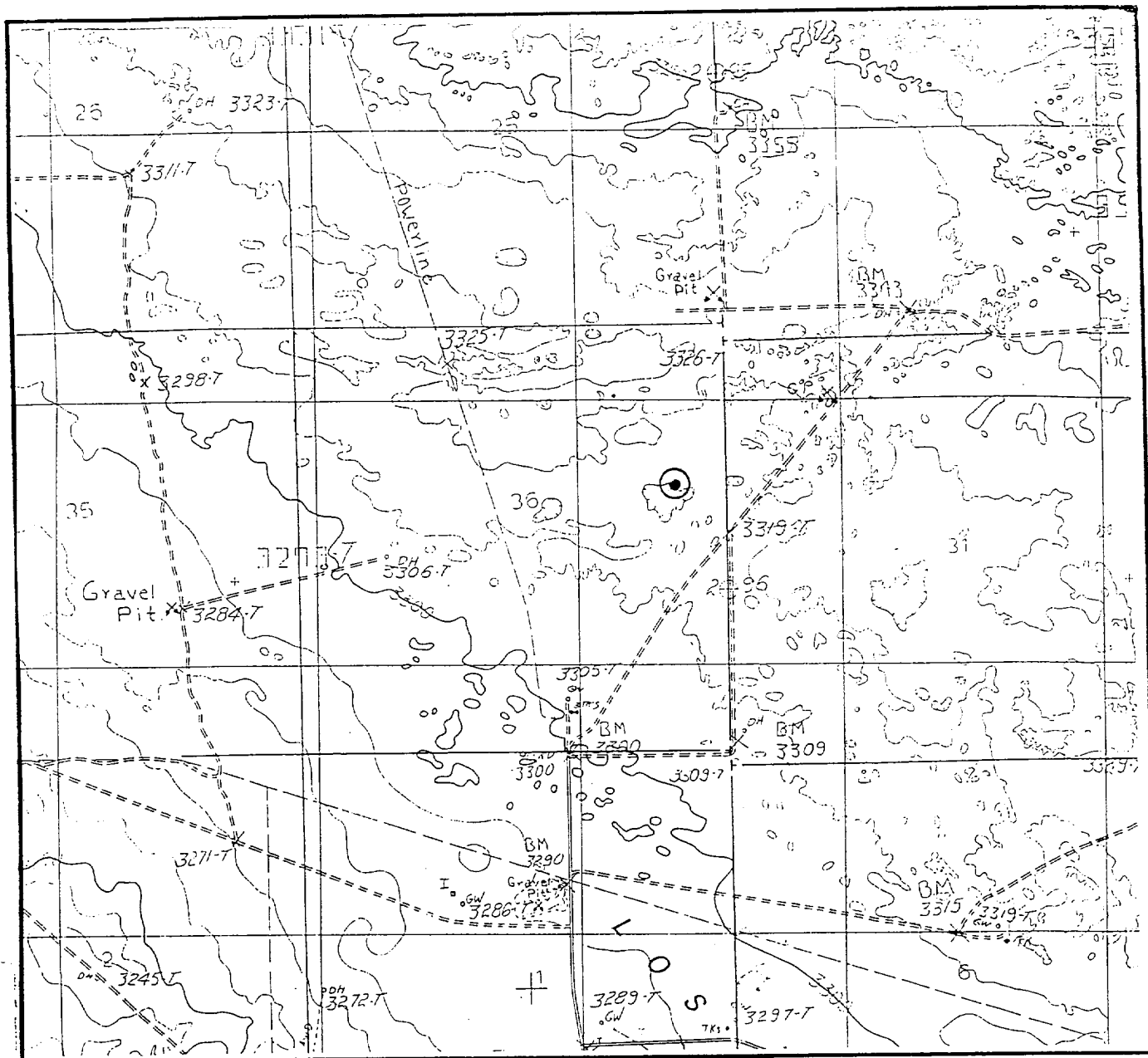


# LOCATION & ELEVATION VERIFICATION MAP



SCALE : 1" = 2000'

CONTOUR INTERVAL 10'

SECTION 36 TWP 22-S RGE 30-E

SURVEY NEW MEXICO PRINCIPAL MERIDIAN

COUNTY EDDY STATE NM

DESCRIPTION 1980' FNL & 660' FEL

ELEVATION 3313'

OPERATOR ENRON OIL & GAS COMPANY

LEASE JAMES RANCH UNIT #16

U.S.G.S. TOPOGRAPHIC MAP

LOS MEDANOS, NEW MEXICO

SCALED LAT. N 32°21'01"

LONG. W 103°49'38"

This location has been very carefully staked on the ground according to the best official survey records, maps, and other data available to us.

Review this plat and notify us immediately of any possible discrepancy.

## TOPOGRAPHIC LAND SURVEYORS

*Surveying & Mapping for the Oil & Gas Industry*

1307 N. HOBART  
PAMPA, TX. 79065  
(800) 658-6382

6709 N. CLASSEN BLVD.  
OKLAHOMA CITY, OK. 73116  
(800) 654-3219

2903 N. BIG SPRING  
MIDLAND, TX. 79705  
(800) 767-1653