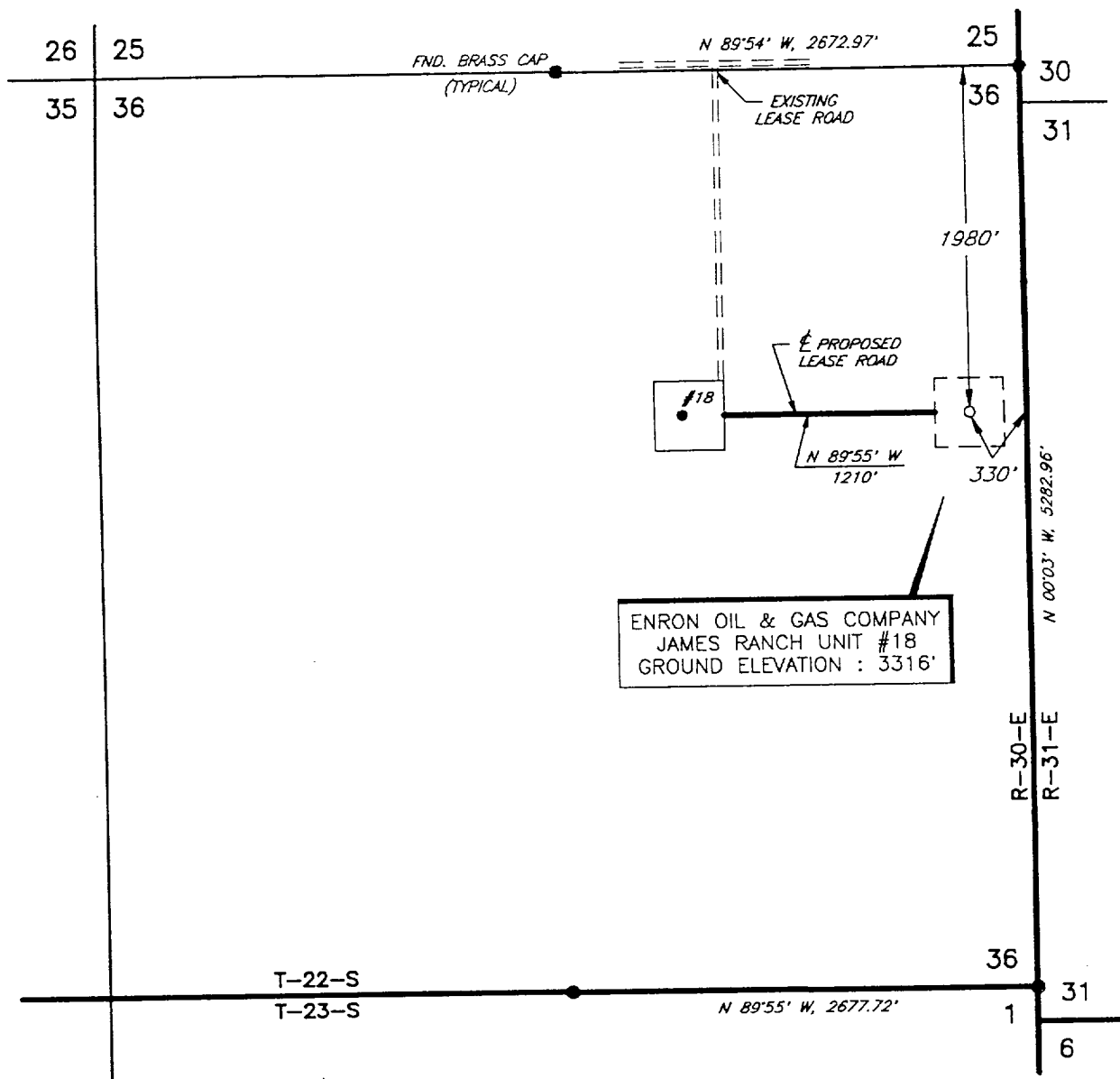
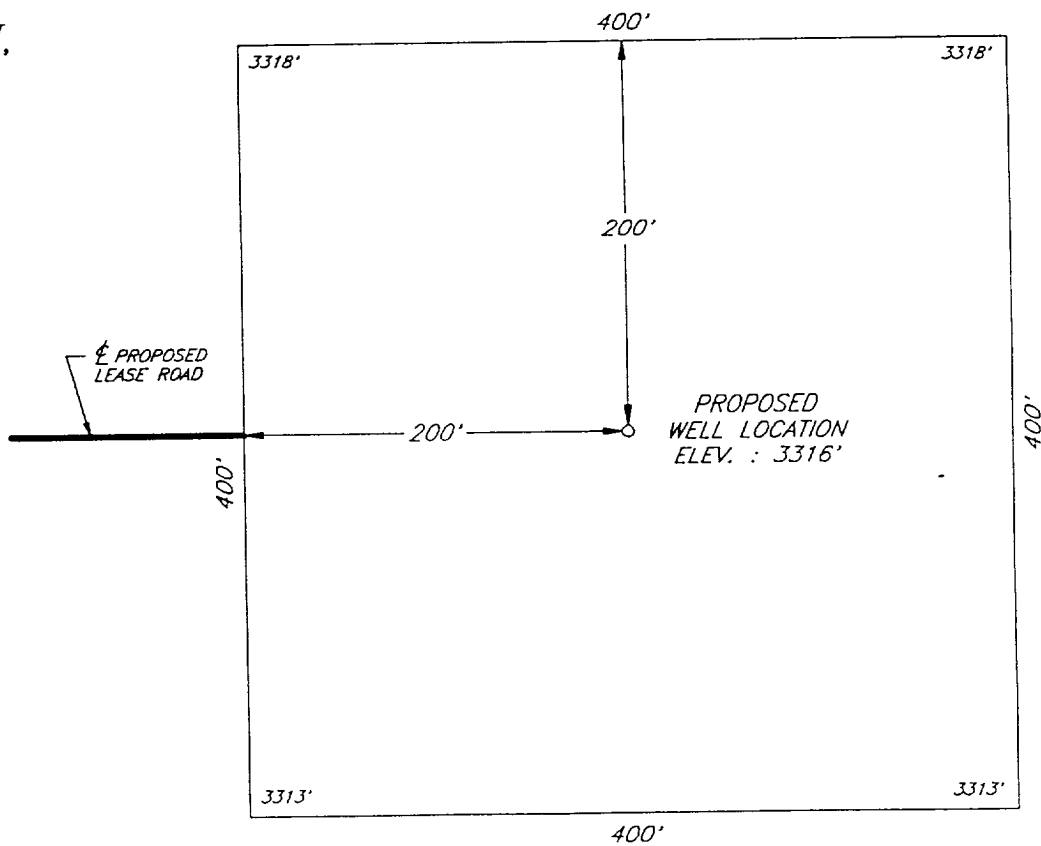


PLAT SHOWING PROPOSED  
WELL LOCATION AND LEASE OAD IN  
SECTION 36, T-22-S, R-30-E, N.M.P.M.  
EDDY COUNTY, NEW MEXICO



PLAN VIEW  
1" = 1000'



DETAIL VIEW  
1" = 100'

				<b>ENRON OIL &amp; GAS COMPANY</b> <i>MIDLAND, TEXAS</i>	SCALE: AS SHOWN
					DATE: OCTOBER 25, 1995
NO.	REVISION	DATE	BY		JOB NO.: 42122-F
SURVEYED BY: R.B. DRAWN BY: V.H.B. APPROVED BY: V.L.B.					<i>SURVEYING AND MAPPING BY</i> <b>TOPOGRAPHIC LAND SURVEYORS</b> <i>MIDLAND, TEXAS</i>
					48 SE SHEET : 1 OF 1