

UNITED STATES
DEPARTMENT OF THE INTERIOR
BUREAU OF LAND MANAGEMENTSUBMIT IN ONE COMMISSION
(See other instruction
reverse side)
Artesia, N.M. 8210

Form approved.

C/SF

APPLICATION FOR PERMIT TO DRILL OR DEEPEN

1a. TYPE OF WORK: DRILL ☒ DEEPEN ☐b. TYPE OF WELL: OIL WELL ☒ GAS WELL ☐ Other ☐ SINGLE ZONE ☐ MULTIPLE ZONE ☐

2. NAME OF OPERATOR DEVON ENERGY CORPORATION (NEVADA) 6137

3. ADDRESS AND TELEPHONE NO.
20 N. BROADWAY, SUITE 1500, OKC, OK 73102 (405) 235-36114. LOCATION OF WELL (Report location clearly and in accordance with any State requirements)*
At surface 1750' FSL & 990' FEL

At top proposed prod. zone (SAME)

Unit I

14. DISTANCE IN MILES AND DIRECTION FROM NEAREST TOWN OR POST OFFICE*
35 miles WNW of Jal, New Mexico15. DISTANCE FROM PROPOSED LOCATION TO NEAREST PROPERTY OR LEASE LINE, FT. 990'
(Also to nearest d.d.e. unit line if any)

16. NO. OF ACRES IN LEASE 800

17. NO. OF ACRES ASSIGNED TO THIS WELL 40

18. DISTANCE FROM PROPOSED LOCATION* TO NEAREST WELL, DRILLING, COMPLETED, OR APPLIED FOR, ON THIS LEASE, FT. 1016'

19. PROPOSED DEPTH 8750'

20. ROTARY OR CABLE TOOLS* Rotary

21. ELEVATIONS (Show whether DF, RT, GR, etc.) 3537', GL

22. APPROX. DATE WORK WILL START* 9/1/1995

23. PROPOSED CASING AND CEMENTING PROGRAM

Secretary's Potash

SIZE OF HOLE GRADE, SIZE OF CASING WEIGHT PER FOOT SETTING DEPTH QUANTITY OF CEMENT

17 1/2" 13 3/8" H-40 48# 850' CIRCULATE 500 sx 35/65 Poz and 200 sx "C"

11" 8 5/8" J-55 32# 4350' CIRCULATE 1600 sx 35/65 Poz and 200 sx "C"

7 7/8" 5 1/2" J-55 15.5 & 17# 8750' (TIE BACK) 1st Stage 525 sx Silica Lite H

DV Tool +/- 5500' 2nd Stage 225 sx 35/65 Poz and 400 sx H.

Devon Energy proposes to drill to approximately 8750' to test the Delaware for commercial quantities of oil. If the Delaware is deemed non-commercial, the wellbore will be plugged and abandoned as per Federal regulations. Programs to adhere to onshore oil and gas regulations are outlined in the following exhibits and attachments.

Drilling Program:
Surface Use and Operating Plan
Exhibit #1/1-A - Blowout Prevention Equipment
Exhibit #2 - Location and Elevation Plat
Exhibit #3 - Planned Access Roads
Exhibit #4 - Wells Within One Mile Radius
Exhibit #5 - Production Facilities Plat
Exhibit #6 - Rotary Rig Layout

IN ABOVE SPACE DESCRIBE PROPOSED PROGRAM: If proposal is to deepen, give data on present productive zone and proposed new productive zone. If proposal is to drill or deepen directionally, give pertinent data on subsurface locations and measured and true vertical depths. Give blowout prevention program, if any.

24. SIGNED [Signature] Gerald T. Pepper

TITLE District Engineer

DATE July 10, 1995

*(This space for Federal or State office use)

PERMIT NO. APPROVAL DATE

Application approval does not warrant or certify that the applicant holds legal or equitable title to those rights in the subject lease which would entitle the applicant to conduct operations thereon.

CONDITIONS OF APPROVAL, IF ANY:

APPROVED BY [Signature] TITLE Acting State Director DATE 9-6-95

See Instructions On Reverse Side

Title 18 U.S.C. Section 1001, makes it a crime for any person knowingly and willfully to make to any department or agency of the United States any false, fictitious or fraudulent statements or representations as to any matter within its jurisdiction

RECEIVED

SEP 20 1995

OIL CON. DIV.
DIST. 2Post ID-1
9-29-95
New Line & APZAPPROVAL SUBJECT TO
GENERAL REQUIREMENTS AND
SPECIAL STIPULATIONS
ATTACHED

DISTRICT I
P. O. Box 1980
Hobbs, NM 88241-1980

DISTRICT II
P. O. Drawer DD
Artesia, NM 88211-0719

DISTRICT III
1000 Rio Brazos Rd.
Aztec, NM 87410

DISTRICT IV
P. O. Box 2088
Santa Fe, NM 87507-2088

State of New Mexico
Energy, Minerals, and Natural Resources Department

Form C-102
Revised 02-10-94

Instructions on back

Submit to the Appropriate
District Office
State Lease - 4 copies
Fee Lease - 3 copies

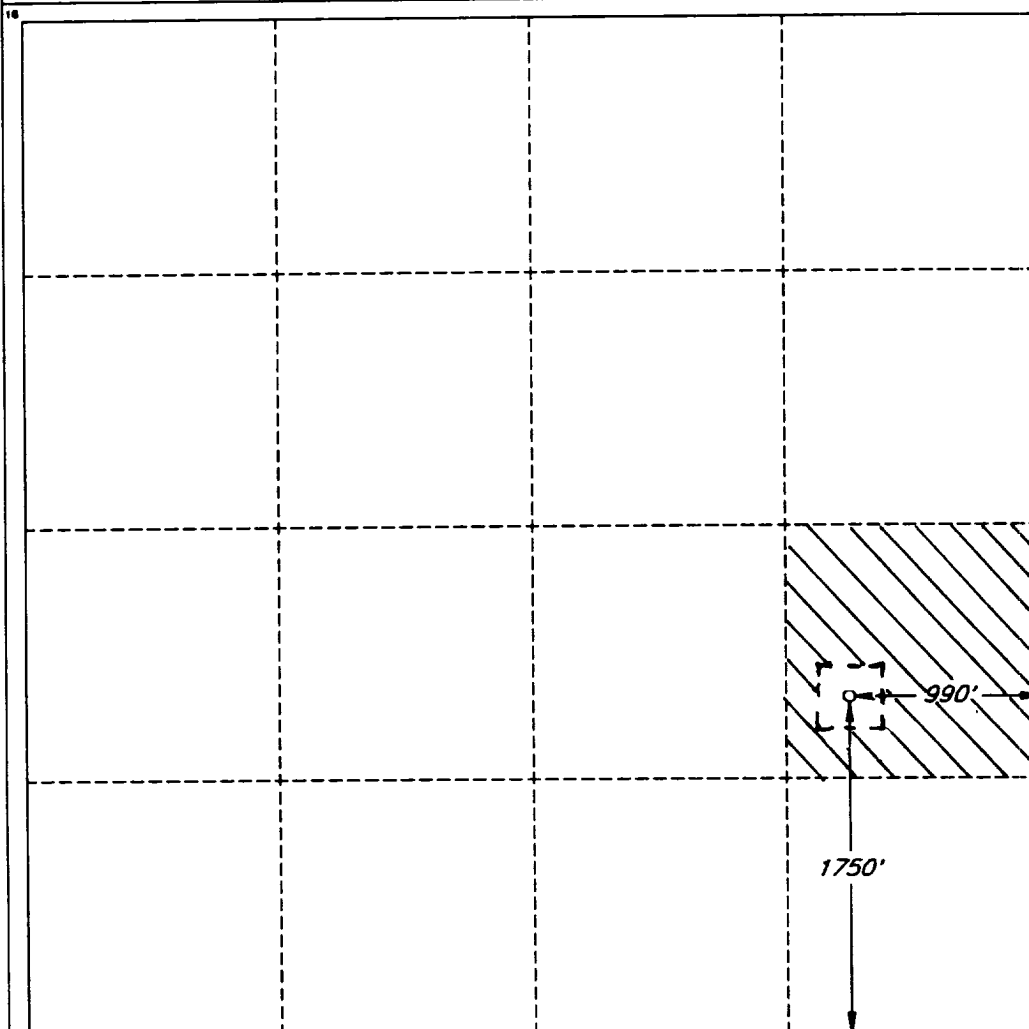
OIL CONSERVATION DIVISION
P. O. Box 2088
Santa Fe, New Mexico 87504-2088

☐ AMENDED REPORT

WELL LOCATION AND ACREAGE DEDICATION PLAT

1 API Number 30-015-28647		2 Pool Code 33745		3 Pool Name Ingle Wells (Delaware)					
4 Property Code		5 Property Name TODD '131' FEDERAL						6 Well Number 9	
7 OGRID No. 6137		8 Operator Name DEVON ENERGY CORPORATION (NEVADA)						9 Elevation 3537'	
10 SURFACE LOCATION									
UL or lot no. I	Section 13	Township 23 SOUTH	Range 31 EAST, N.M.P.M.	Lot Ida	Feet from the 1750'	North/South line SOUTH	Feet from the 990'	East/West line EAST	County EDDY
"BOTTOM HOLE LOCATION IF DIFFERENT FROM SURFACE"									
UL or lot no.	Section	Township	Range	Lot Ida	Feet from the	North/South line	Feet from the	East/West line	County
12 Dedicated Acres 40		13 Joint or Infill		14 Consolidation Code		15 Order No.			

NO ALLOWABLE WELL BE ASSIGNED TO THIS COMPLETION UNTIL ALL INTERESTS HAVE BEEN CONSOLIDATED OR A NON-STANDARD UNIT HAS BEEN APPROVED BY THE DIVISION



OPERATOR CERTIFICATION

I hereby certify that the information contained herein is true and complete to the best of my knowledge and belief.

Signature

Printed Name

Gerald T. Pepper

Title

District Engineer

Date

07-10-95

SURVEYOR CERTIFICATION

I hereby certify that the well location shown on this plat was plotted from field notes of actual surveys made by me or under my supervision, and that the same is true and correct to the best of my belief.

Date of Survey

MAY 8, 1995

Signature and Seal of Professional Surveyor

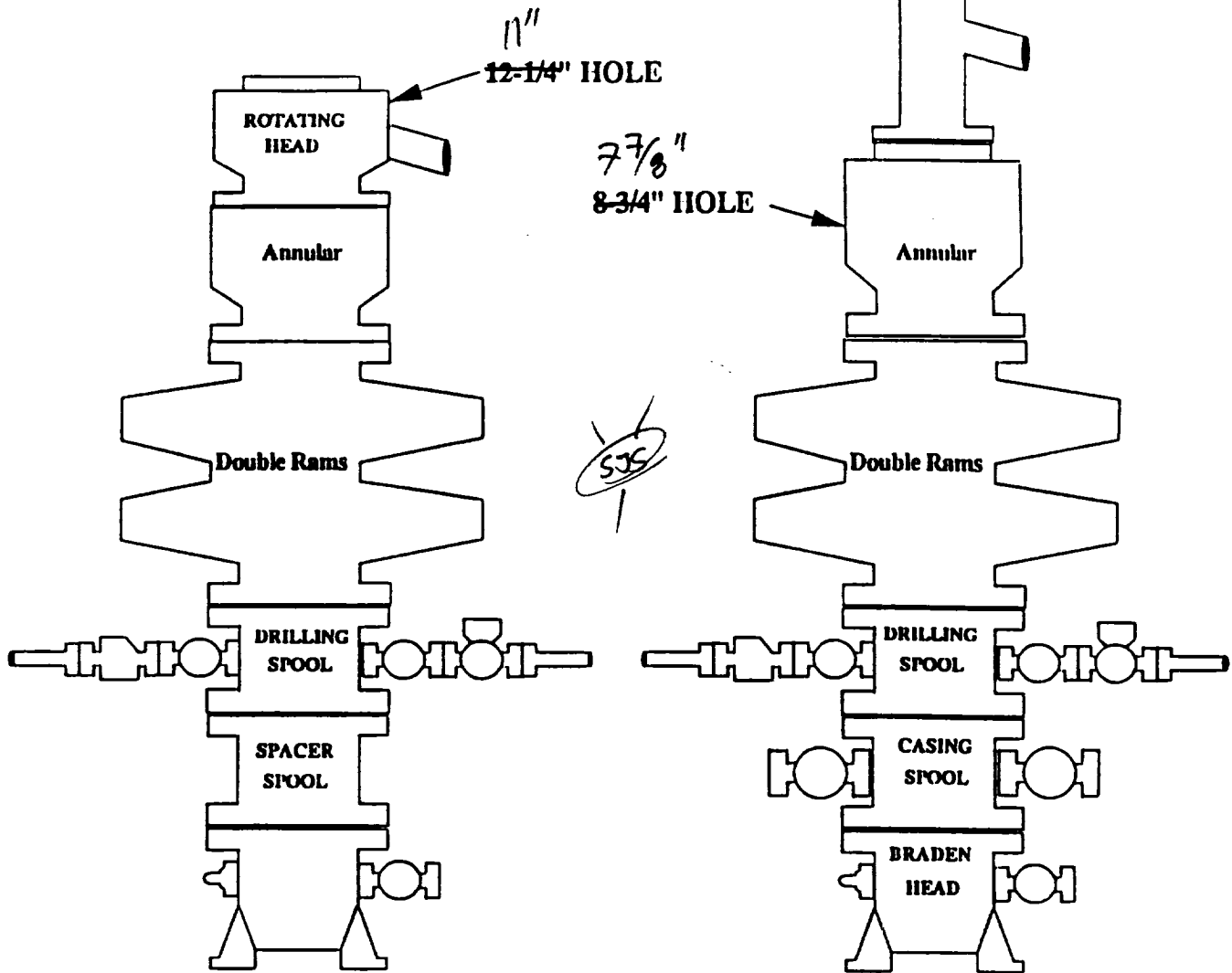
V. LYNN
BEZNER
NO. 7920

Certified by

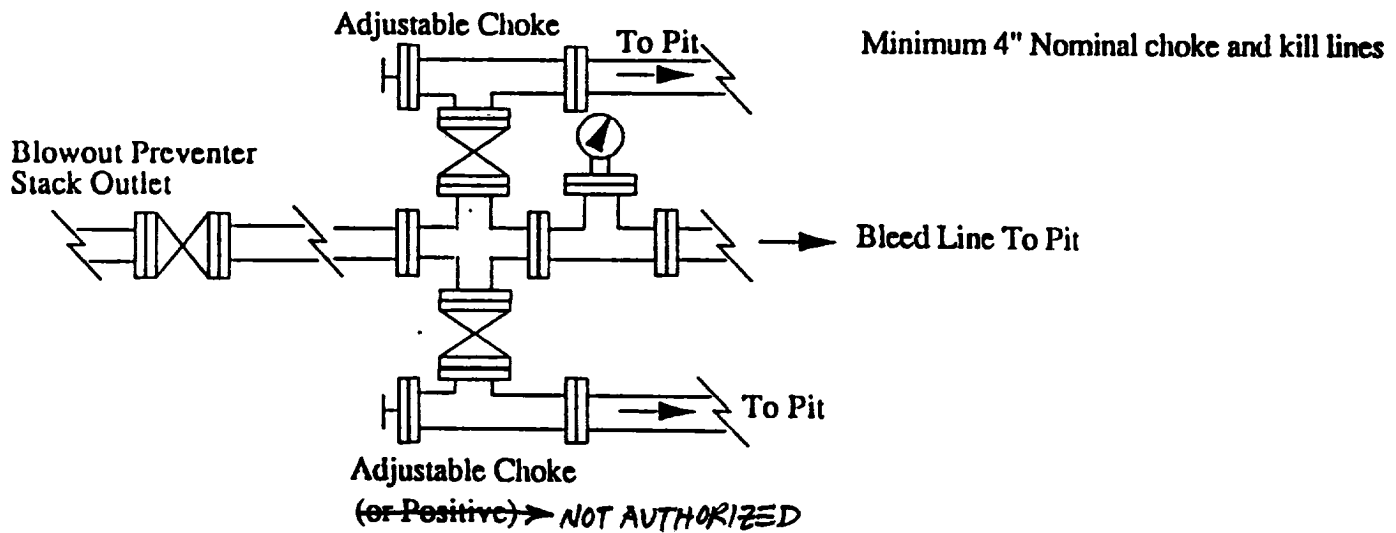
V. L. BEZNER AND S.S. #7920

JOB #39298-2747 SW / V.H.B.

BOPE SCHEMATIC



Choke Manifold Requirement (3000 psi WP)



TODD "13I" FEDERAL #9
Eddy County, New Mexico
Exhibit #1

SS

Exhibit #1A
NOTES REGARDING BLOWOUT PREVENTERS
Devon Energy Corporation (Nevada)
TODD "13I" FEDERAL #9
1750' FSL & 990' FEL
Section 13-T23S-R31E, Unit I
Eddy County, New Mexico

1. Drilling nipple will be constructed so it can be removed mechanically without the aid of a welder. The minimum internal diameter will equal BOP bore.
2. Wear ring will be properly installed in head.
3. Blowout preventer and all associated fittings will be in operable condition to withstand a minimum 3000 psi working pressure.
4. All fittings will be flanged.
5. A full bore safety valve tested to a minimum 3000 psi WP with proper thread connections will be available on the rotary rig floor at all times.
6. All choke lines will be anchored to prevent movement.
7. All BOP equipment will be equal to or larger in bore than the internal diameter of the last casing string.
8. Will maintain a kelly cock attached to the kelly.
9. Hand wheels and wrenches will be properly installed and tested for safe operation.
10. Hydraulic floor control for blowout preventer will be located as near in proximity to driller's controls as possible.
11. All BOP equipment will meet API standards and include a minimum 40 gallon accumulator having two independent means of power to initiate closing operation.

IMMUM BLOWOUT PREVENTER REQUIREMENTS

3,000 psi Working Pressure

3 MWP

TODD "13I" FEDERAL #9
Eddy County, New Mexico
Exhibit #1B

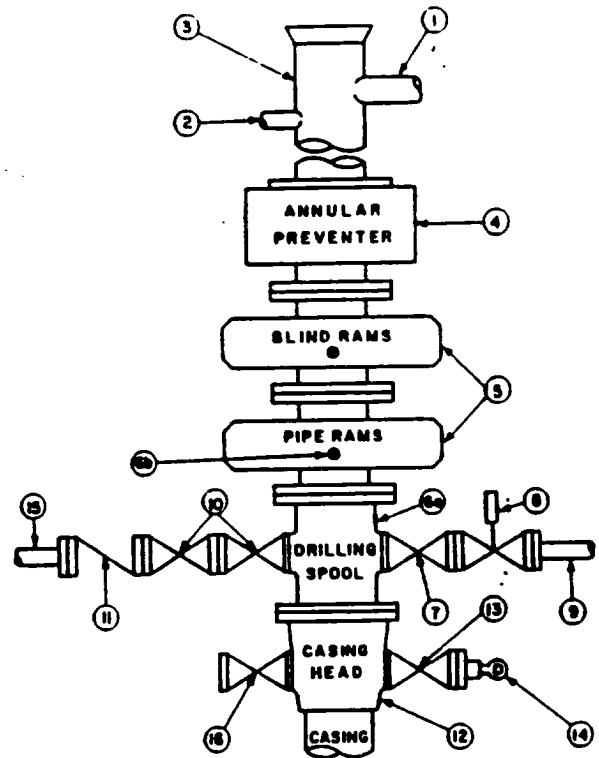
STACK REQUIREMENTS

No.	Item	Min. I.D.	Min. Nominal
1	Flowline		
2	Fill up line		2"
3	Drilling nipple		
4	Annular preventer		
5	Two single or one dual hydraulically operated rams		
6a	Drilling spool with 2" min. kill line and 3" min choke line outlets		
6b	2" min. kill line and 3" min. choke line outlets in ram. (Alternate to 6a above.)		
7	Valve Gate <input type="checkbox"/> Plug <input type="checkbox"/>	3-1/8"	
8	Gate valve—power operated	3-1/8"	
9	Line to choke manifold		3"
10	Valves Gate <input type="checkbox"/> Plug <input type="checkbox"/>	2-1/16"	
11	Check valve	2-1/16"	
12	Casing head		
13	Valve Gate <input type="checkbox"/> Plug <input type="checkbox"/>	1-13/16"	
14	Pressure gauge with needle valve		
15	Kill line to rig mud pump manifold		2"

OPTIONAL

16	Flanged valve	1-13/16"	
----	---------------	----------	--

CONFIGURATION A



CONTRACTOR'S OPTION TO FURNISH:

1. All equipment and connections above bradenhead or casinghead. Working pressure of preventers to be 3,000 psi, minimum.
2. Automatic accumulator (80 gallon, minimum) capable of closing BOP in 30 seconds or less and, holding them closed against full rated working pressure.
3. BOP controls, to be located near drillers position.
4. Kelly equipped with Kelly cock.
5. Inside blowout preventer or its equivalent on derrick floor at all times with proper threads to fit pipe being used.
6. Kelly saver-sub equipped with rubber casing protector at all times.
7. Plug type blowout preventer tester.
8. Extra set pipe rams to fit drill pipe in use on location at all times.
9. Type RX ring gaskets in place of Type R.

MEC TO FURNISH:

1. Bradenhead or casinghead and side valves.
2. Wear bushing, if required.

GENERAL NOTES:

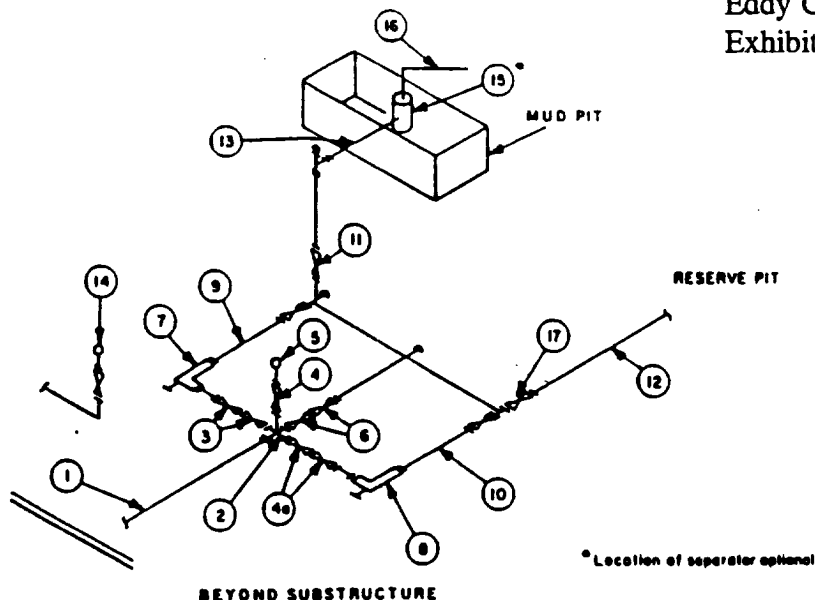
1. Deviations from this drawing may be made only with the express permission of MEC's Drilling Manager.
2. All connections, valves, fittings, piping, etc., subject to well or pump pressure must be flanged (suitable clamp connections acceptable) and have minimum working pressure equal to rated working pressure of preventers up through choke. Valves must be full opening and suitable for high pressure mud service.
3. Controls to be of standard design and each marked, showing opening and closing position.
4. Chokes will be positioned so as not to hamper or delay changing of choke beans. Replaceable parts for adjustable choke, other bean sizes, retainers, and choke wrenches to be conveniently located for immediate use.
5. All valves to be equipped with handwheels or handles ready for immediate use.
6. Choke lines must be suitably anchored.

7. Handwheels and extensions to be connected and ready for use.
8. Valves adjacent to drilling spool to be kept open. Use outside valves except for emergency.
9. All seamless steel control piping (3000 psi working pressure) to have flexible joints to avoid stress. Hoses will be permitted.
10. Casinghead connections shall not be used except in case of emergency.
11. Do not use kill line for routine fill-up operations.

MINIMUM CHOKE MANIFOLD
JO. 5,000 and 10,000 PSI Working Pressure

3 MWP - 5 MWP - 10 MWP

TODD "13I" FEDERAL #9
Eddy County, New Mexico
Exhibit #1C



MINIMUM REQUIREMENTS										
No		3,000 MWP			5,000 MWP			10,000 MWP		
		I.D.	NOMINAL	RATING	I.D.	NOMINAL	RATING	I.D.	NOMINAL	RATING
1	Line from drilling spool		3"	3,000		3"	5,000		3"	10,000
2	Cross 3"x3"x3"x2"			3,000			5,000			
	Cross 3"x3"x3"x3"									10,000
3	Valves(1) Gate <input type="checkbox"/> Plug <input type="checkbox"/> (2)	3-1/8"		3,000	3-1/8"		5,000	3-1/8"		10,000
4	Valve Gate <input type="checkbox"/> Plug <input type="checkbox"/> (2)	1-13/16"		3,000	1-13/16"		5,000	1-13/16"		10,000
4a	Valves(1)	2-1/16"		3,000	2-1/16"		5,000	3-1/8"		10,000
5	Pressure Gauge			3,000			5,000			10,000
6	Valves Gate <input type="checkbox"/> Plug <input type="checkbox"/> (2)	3-1/8"		3,000	3-1/8"		5,000	3-1/8"		10,000
7	Adjustable Choke(3)	2"		3,000	2"		5,000	2"		10,000
8	Adjustable Choke	1"		3,000	1"		5,000	2"		10,000
9	Line		3"	3,000		3"	5,000		3"	10,000
10	Line		2"	3,000		2"	5,000		3"	10,000
11	Valves Gate <input type="checkbox"/> Plug <input type="checkbox"/> (2)	3-1/8"		3,000	3-1/8"		5,000	3-1/8"		10,000
12	Lines		3"	1,000		3"	1,000		3"	2,000
13	Lines		3"	1,000		3"	1,000		3"	2,000
14	Remote reading compound standpipe pressure gauge			3,000			5,000			10,000
15	Gas Separator		2'x5'			2'x5'			2'x5'	
16	Line		4"	1,000		4"	1,000		4"	2,000
17	Valves Gate <input type="checkbox"/> Plug <input type="checkbox"/> (2)	3-1/8"		3,000	3-1/8"		5,000	3-1/8"		10,000

(1) Only one required in Class 3M.

(2) Gate valves only shall be used for Class 10M.

(3) Remote operated hydraulic choke required on 5,000 psi and 10,000 psi for drilling.

EQUIPMENT SPECIFICATIONS AND INSTALLATION INSTRUCTIONS

- All connections in choke manifold shall be welded, studded, flanged or Cameron clamp of comparable rating.
- All flanges shall be API 6B or 6BX and ring gaskets shall be API RX or BX. Use only BX for 10 MWP.
- All lines shall be securely anchored.
- Chokes shall be equipped with tungsten carbide seats and needles, and replacements shall be available.
- Choke manifold pressure and standpipe pressure gauges shall be available at the choke manifold to assist in regulating chokes. As an alternate with automatic chokes, a choke manifold pressure gauge shall be located on the rig floor in conjunction with the standpipe pressure gauge.
- Line from drilling spool to choke manifold should be as straight as possible. Lines downstream from chokes shall make turns by large bends or 90° bends using bull plugged tees.
- Discharge lines from chokes, choke bypass and from top of gas separator should vent as far as practical from the well.