

District I
PO Box 1980, Hobbs, NM 88241-1980

District II
PO Drawer DD, Artesia, NM 88211-0719

District III
1000 Rio Brazos Rd., Aztec, NM 87410

District IV
PO Box 2088, Santa Fe, NM 87504-2088

State of New Mexico
Energy, Minerals & Natural Resources Department

OIL CONSERVATION DIVISION
PO Box 2088
Santa Fe, NM 87504-2088

Form C-101
Revised February 10, 1994
Instructions on back
Submit to Appropriate District Office
State Lease - 6 Copies
Fee Lease - 5 Copies



AMENDED REPORT

APPLICATION FOR PERMIT TO DRILL, RE-ENTER, DEEPEN, PLUGBACK, OR ADD A ZONE

² Operator Name and Address. Devon Energy Corporation (Nevada) 1500 Mid America Tower 20 N. Broadway Oklahoma City, OK 73102-8260		¹ OGRID Number 6137
		³ API Number 28762
⁴ Property Code 18277	⁵ Property Name TODD "36N" STATE	⁶ Well No. 14

⁷ Surface Location

UL or lot no. N	Section 36	Township 23S	Range 31E	Lot Ids	Feet from the 990	North/South line SOUTH	East/West line WEST	County EDDY
--------------------	---------------	-----------------	--------------	---------	----------------------	---------------------------	------------------------	----------------

⁸ Proposed Bottom Hole Location If Different From Surface

UL or lot no.	Section	Township	Range	Lot Ids	Feet from the	North/South line	Feet from the	East/West line	County
⁹ Proposed Pool 1 INGLE WELLS (DELAWARE)						¹⁰ Proposed Pool 2			

¹¹ Work Type Code N	¹² Well Type Code O	¹³ Cable/Rotary R	¹⁴ Lease Type Code State (K-952)	¹⁵ Ground Level Elevation 3500'
¹⁶ Multiple No	¹⁷ Proposed Depth 8750'	¹⁸ Formation Delaware/Bone Spring	¹⁹ Contractor NOT YET SELECTED	²⁰ Spud Date March 1, 1996

²¹ Proposed Casing and Cement Program

Hole Size	Casing Size	Casing weight/foot	Setting Depth	Sacks of Cement	Estimated TOC
17 1/2"	13 3/8"	48	850'	700	SURFACE
12 1/4"	8 5/8"	32	4350'	1600	SURFACE
7 7/8"	5 1/2"	15.5 & 17	8750'	1200*	300'

²² Describe the proposed program. If this application is to DEEPEN or PLUG BACK give the data on the present productive zone and proposed new productive zone.

Describe the blowout prevention program, if any. Use additional sheets if necessary.

Devon plans to drill this well to a total depth of 8750 feet and complete it as a Delaware development well. If it is deemed non-commercial then it will be plugged and abandoned in accordance with the rules and regulations established by the New Mexico OCD or converted to salt water disposal after installing casing and obtaining the necessary disposal permits. Blowout prevention equipment will be installed while drilling the intermediate and production holes.

*DV tool will be positioned at approximately 5300'.

²³ I hereby certify that the information given above is true and complete to the best of my knowledge and belief.

Signature: *Gerald T. Pepper*

Printed name: Gerald T. Pepper

Title: District Engineer

Date: January 5, 1996

Phone: (405) 235-3611, X4513

OIL CONSERVATION DIVISION

Approved by: ORIGINAL SIGNED BY TIM W. GUM
DISTRICT II SUPERVISOR

Title:

Approval Date: 1-8-96

Expiration Date: 7-8-96

Conditions of Approval:

Attached ☐

DISTRICT I
P. O. Box 1980
Hobbs, NM 88241-1980

State of New Mexico
Energy, Minerals, and Natural Resources Department

Form C-102
Revised 02-10-94
Instructions on back

DISTRICT II
P. O. Drawer DD
Artesia, NM 88211-0719

OIL CONSERVATION DIVISION
P. O. Box 2088
Santa Fe, New Mexico 87504-2088

Submit to the Appropriate
District Office
State Lease - 4 copies
Fee Lease - 3 copies

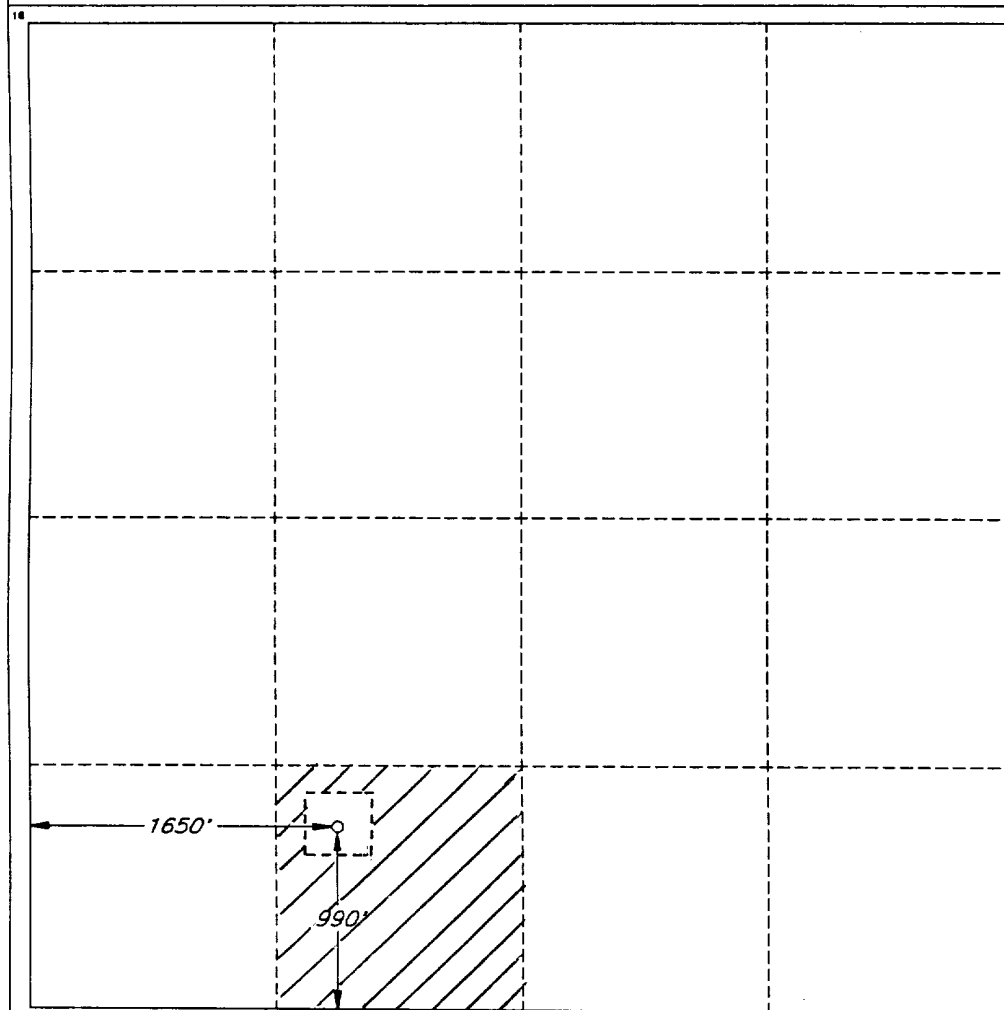
☐ AMENDED REPORT

DISTRICT IV
P. O. Box 2088
Santa Fe, NM 87507-2088

WELL LOCATION AND ACREAGE DEDICATION PLAT

¹ API Number 30-015-28762		² Pool Code 33745		³ Pool Name Ingle Wells (Delaware)					
⁴ Property Code		⁵ Property Name TODD '36' N STATE						⁶ Well Number 14	
⁷ OGRID No. 6137		⁸ Operator Name DEVON ENERGY CORPORATION (NEVADA)						⁹ Elevation 3500'	
¹⁰ SURFACE LOCATION									
UL or lot no. N	Section 38	Township 23 SOUTH	Range 31 EAST, N.M.P.M.	Lot Ida	Feet from the 990'	North/South line SOUTH	Feet from the 1650'	East/West line WEST	County EDDY
"BOTTOM HOLE LOCATION IF DIFFERENT FROM SURFACE									
UL or lot no.	Section	Township	Range	Lot Ida	Feet from the	North/South line	Feet from the	East/West line	County
¹² Dedicated Acres 40		¹³ Joint or Infill		¹⁴ Consolidation Code		¹⁵ Order No.			

NO ALLOWABLE WELL BE ASSIGNED TO THIS COMPLETION UNTIL ALL INTERESTS HAVE BEEN
CONSOLIDATED OR A NON-STANDARD UNIT HAS BEEN APPROVED BY THE DIVISION



OPERATOR CERTIFICATION

I hereby certify that the information
contained herein is true and complete
to the best of my knowledge and belief.

Signature

Printed Name
Gerald T. Pepper

Title
District Engineer

Date
January 5, 1996

SURVEYOR CERTIFICATION

I hereby certify that the well
location shown on this plat was
plotted from field notes of actual
surveys made by me or under
my supervision, and that the
same is true and correct to the
best of my belief.

Date of Survey
NOVEMBER 17, 1995

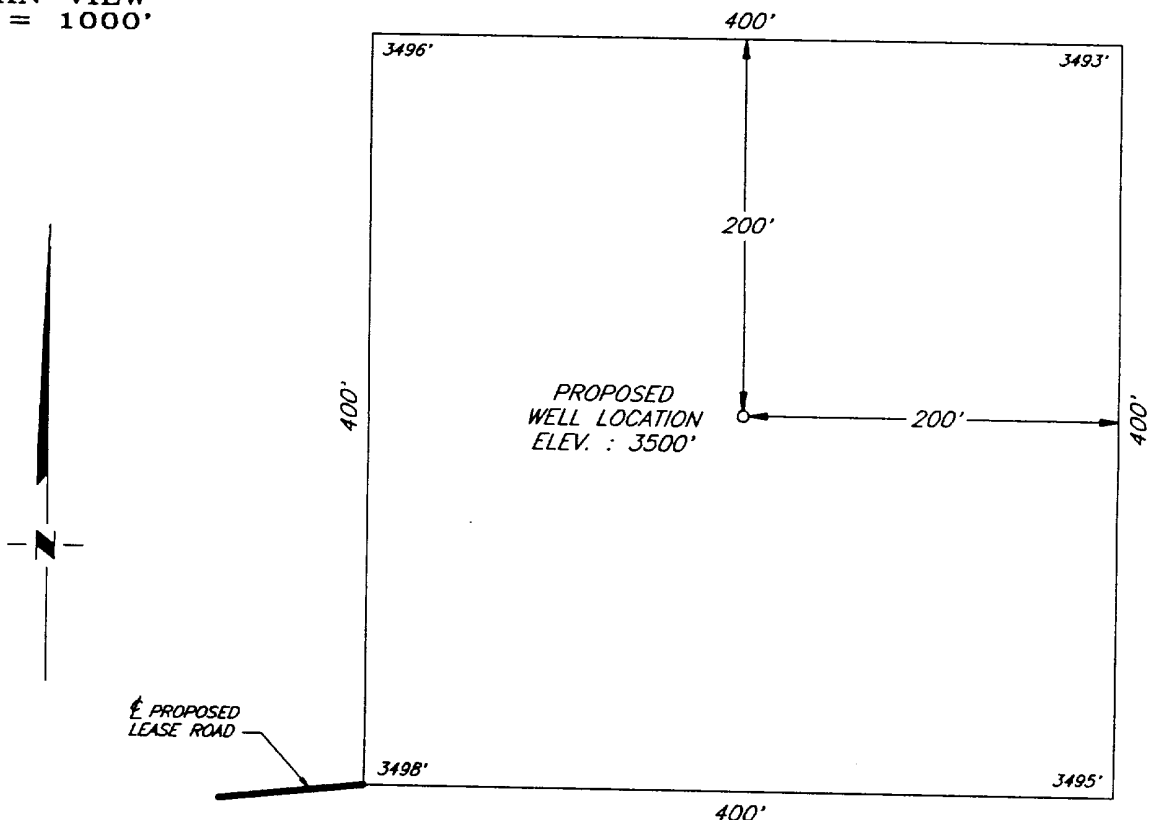
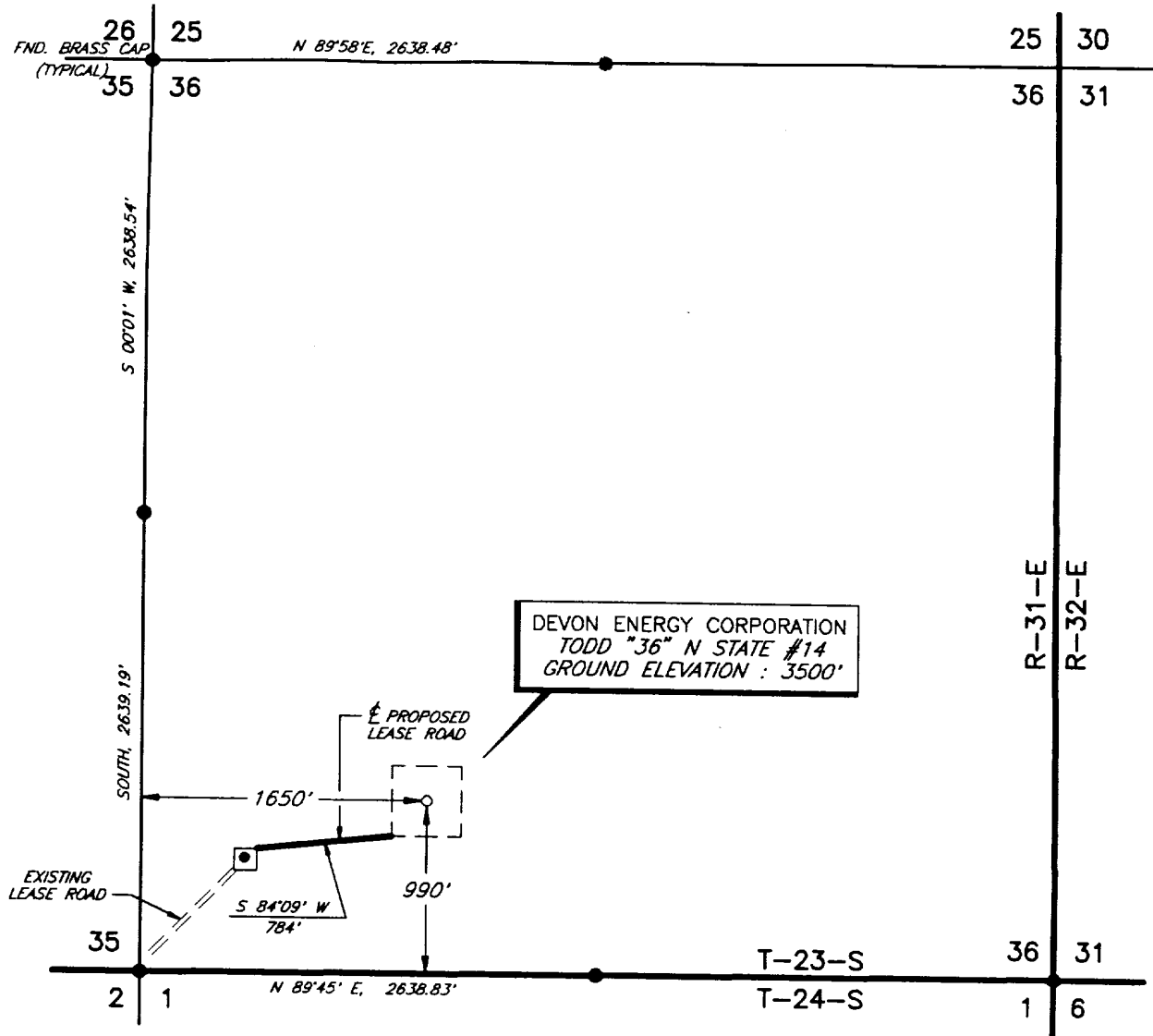
Signature and Seal of
Professional Surveyor

V. LYNN
BEZNER
NO. 7920

Certification
V. L. BEZNER P.E.S. #7920

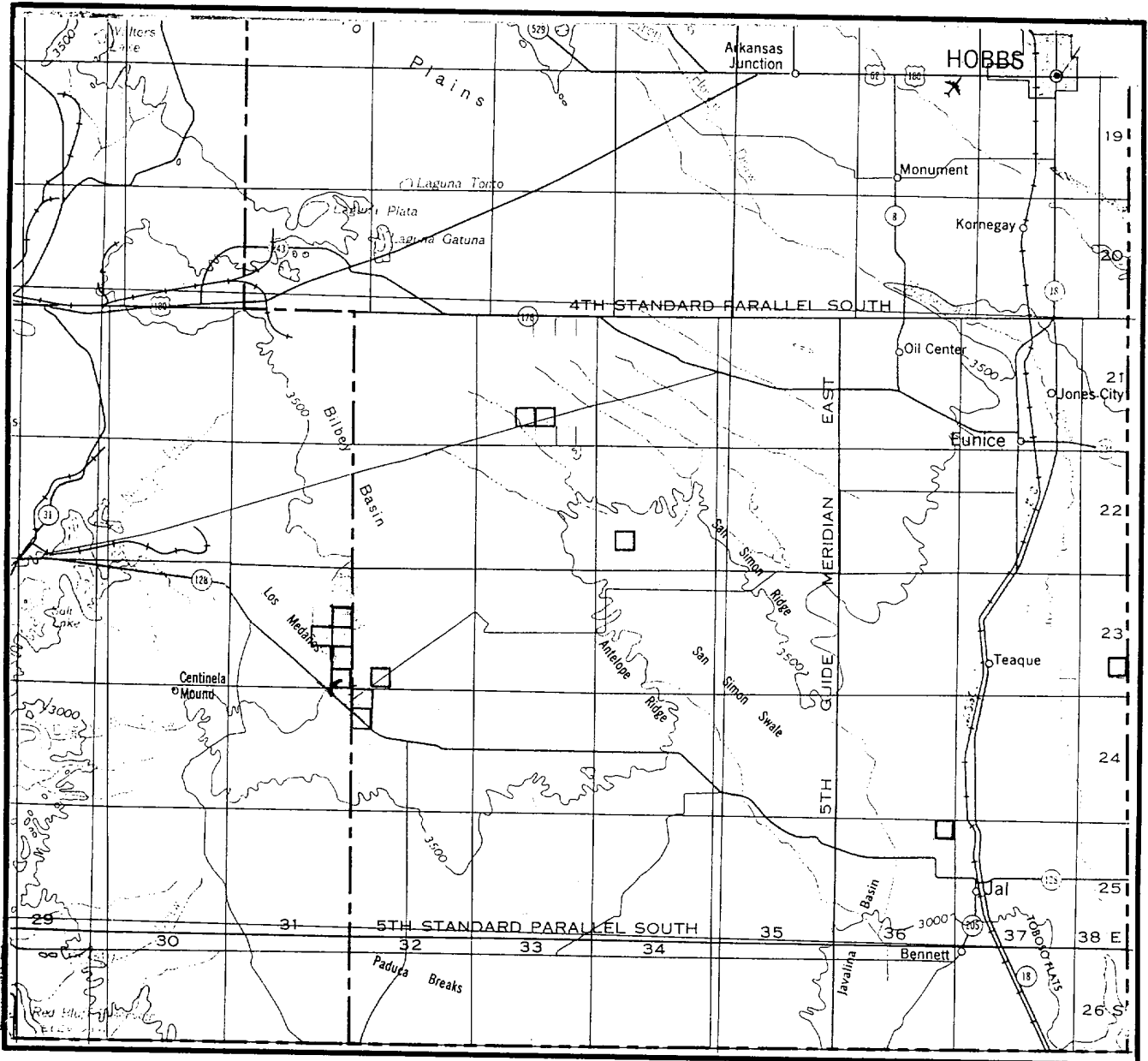
JOB #42471-47 SW / V.H.B.

PLAT SHOWING PROPOSED
WELL LOCATION AND LEASE ROAD IN
SECTION 36, T-23-S, R-31-E, N.M.P.M.
EDDY COUNTY, NEW MEXICO



				DEVON ENERGY CORPORATION <i>MIDLAND, TEXAS</i>	SCALE: AS SHOWN
NO.	REVISION	DATE	BY		DATE: DECEMBER 1, 1995
SURVEYED BY: B.R.B.		<i>SURVEYING AND MAPPING BY</i> TOPOGRAPHIC LAND SURVEYORS <i>MIDLAND, TEXAS</i>			JOB NO.: 42471-4F
DRAWN BY: V.H.B.					47 SW
APPROVED BY: V.L.B.					

VICINITY MAP



SECTION 36 TWP 23-S RGE 31-E
 SURVEY NEW MEXICO PRINCIPAL MERIDIAN
 COUNTY EDDY STATE NM
 DESCRIPTION 990' FSL & 1650' FWL

OPERATOR DEVON ENERGY CORPORATION
 LEASE TOOD "36" N STATE #14

DISTANCE & DIRECTION FROM THE JCT. OF STATE HWY.
128 & PAVED COUNTY ROAD, ±35 MILES WEST OF JAL,
GO NORTH 3.6 MILES ON PAVED COUNTY ROAD, THENCE
NORTHEAST 0.2 MILE ON ABANDONED LEASE ROAD TO
ABANDONED WELL #1 AND A POINT ±400' SOUTHEAST
OF THE LOCATION.



This location has been very carefully staked on the ground according to the best official survey records, maps, and other data available to us.
 Review this plat and notify us immediately of any possible discrepancy.

TOPOGRAPHIC LAND SURVEYORS

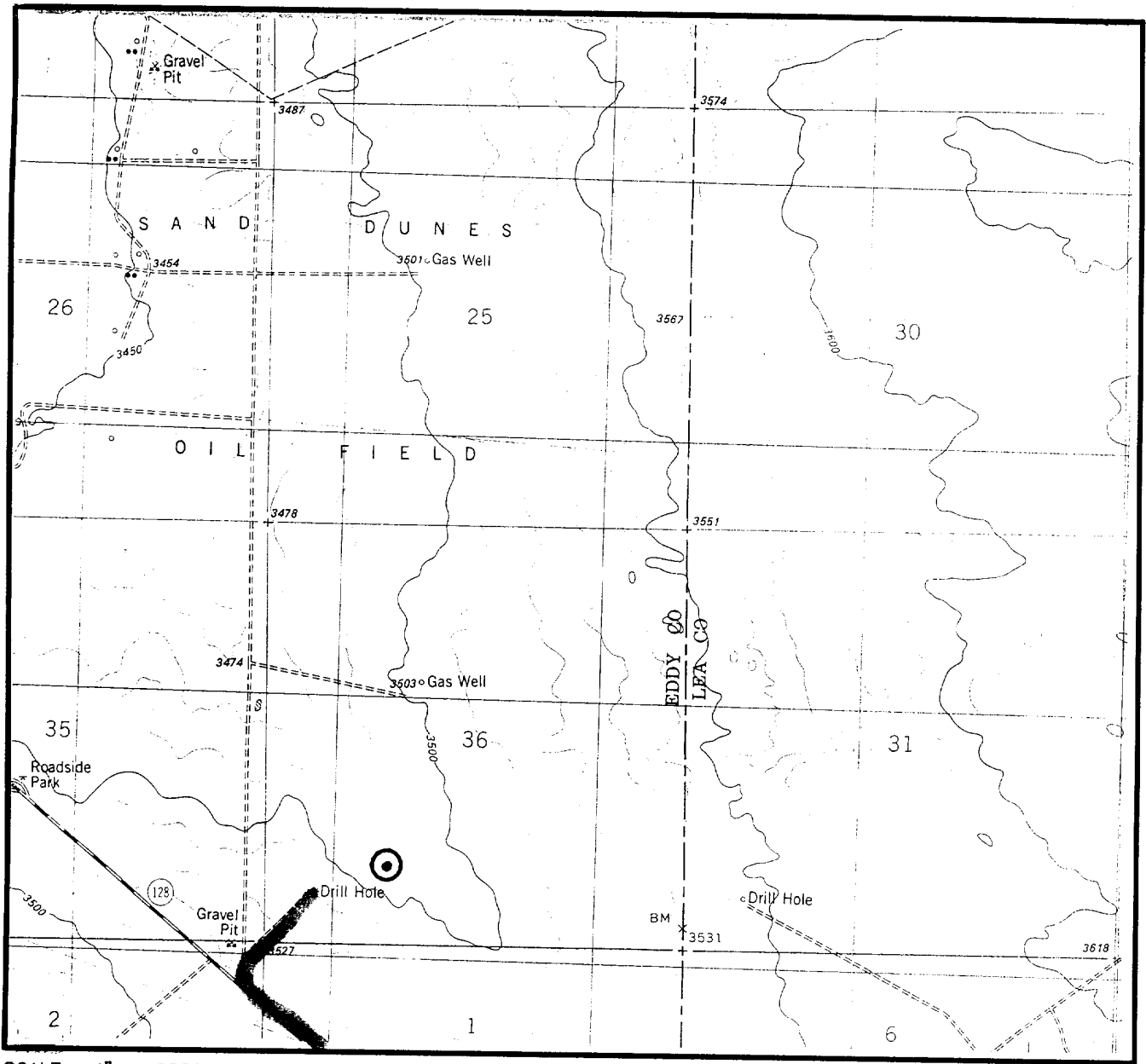
Surveying & Mapping for the Oil & Gas Industry

1307 N. HOBART
 PAMPA, TX. 79065
 (800) 658-6382

6709 N. CLASSEN BLVD.
 OKLAHOMA CITY, OK. 73116
 (800) 654-3219

2903 N. BIG SPRING
 MIDLAND, TX. 79705
 (800) 767-1653

LOCATION & ELEVATION VERIFICATION MAP



SCALE : 1" = 2000' CONTOUR INTERVAL 10'

SECTION 36 TWP 23-S RGE 31-E
SURVEY NEW MEXICO PRINCIPAL MERIDIAN
COUNTY EDDY STATE NM
DESCRIPTION 990' FSL & 1650' FWL
ELEVATION 3500'

OPERATOR DEVON ENERGY CORPORATION
LEASE TODD "36" N STATE #14

U.S.G.S. TOPOGRAPHIC MAP
BOOTLEG RIDGE, NEW MEXICO

SCALED LAT. N 32°15'23"
LONG. W 103°44'03"



This location has been very carefully staked on the ground according to the best official survey records, maps, and other data available to us.
Review this plat and notify us immediately of any possible discrepancy.

TOPOGRAPHIC LAND SURVEYORS

Surveying & Mapping for the Oil & Gas Industry

1307 N. HOBART
PAMPA, TX. 79065
(800) 658-6382

6709 N. CLASSEN BLVD.
OKLAHOMA CITY, OK. 73116
(800) 654-3219

2903 N. BIG SPRING
MIDLAND, TX. 79705
(800) 767-1653