

District I
PO Box 1980, Hobbs, NM 88241-1980
District II
PO Drawer DD, Artesia, NM 88211-0719
District III
1000 Rio Brazos Rd., Aztec, NM 87410
District IV
PO Box 2088, Santa Fe, NM 87504-2088

State of New Mexico
Energy, Minerals & Natural Resources Department

OIL CONSERVATION DIVISION
PO Box 2088
Santa Fe, NM 87504-2088

Form C-101
Revised February 10, 1994
Instructions on back
Submit to Appropriate District Office
State Lease - 6 Copies
Fee Lease - 5 Copies

C/SF
BEM
SL
BP

☐ AMENDED REPORT

APPLICATION FOR PERMIT TO DRILL, RE-ENTER, DEEPEN, PLUGBACK, OR ADD A ZONE

Operator Name and Address Pogo Producing Company P.O. Box 10340 Midland, Texas 79702		OGRID Number 017891
Property Code 18412		Property Name Gaines "28"
APR 7 1995 OIL CON. DIV. DIST. 2		API Number 30-015-28819
		Well No. 5

7 Surface Location

UL or lot no.	Section	Township	Range	Lot Ida	Feet from the	North/South line	Feet from the	East/West line	County
B	28	24S	29E		330'	North	1650'	East	Eddy

8 Proposed Bottom Hole Location If Different From Surface

UL or lot no.	Section	Township	Range	Lot Ida	Feet from the	North/South line	Feet from the	East/West line	County
Proposed Pool 1 UNDES CORRAL DRAW; Bone Spring					Proposed Pool 2				

Work Type Code N	Well Type Code O	Cable/Rotary R	Lease Type Code S	Ground Level Elevation 2925'
Multiple S	Proposed Depth 7800'	Formation Bone Springs	Contractor N/A	Spud Date Upon Approval

21 Proposed Casing and Cement Program

Hole Size	Casing Size	Casing weight/foot	Setting Depth	Sacks of Cement	Estimated TOC
14-3/4"	10 3/4"	40.5#	500'	suff to circ.	Surface
9-7/8"	7 5/8"	26.4#	2900'	" " "	"
6-3/4"	4 1/2"	11.60#	7800'	700	2000'

Describe the proposed program. If this application is to DEEPEN or PLUG BACK give the data on the present productive zone and proposed new productive zone. Describe the blowout prevention program, if any. Use additional sheets if necessary.

This proposed well is a Delaware/Bone Springs test.

B.O.P. Sketch is attached.

Posted ID-1
2-9-96
NL & API

I hereby certify that the information given above is true and complete to the best of my knowledge and belief. Signature: <i>James M.C. Ritchie, Jr.</i> Printed name: James M.C. Ritchie, Jr. Title: Agent Date: 2/6/96 Phone: (915) 682-6601		OIL CONSERVATION DIVISION Approved by: ORIGINAL SIGNED BY TIM W. GUM Title: DISTRICT II SUPERVISOR Approval Date: 2-7-96 Expiration Date: 8-7-96 Conditions of Approval: Attached <input type="checkbox"/>	
---	--	--	--

DISTRICT I

P.O. Box 1980, Hobbs, NM 88241-1980

DISTRICT II

P.O. Drawer DD, Artesia, NM 88211-0719

DISTRICT III

1000 Rio Brazos Rd., Aztec, NM 87410

DISTRICT IV

P.O. BOX 2088, SANTA FE, N.M. 87504-2088

State of New Mexico

Energy, Minerals and Natural Resources Department

Form C-102

Revised February 10, 1994

Submit to Appropriate District Office

State Lease - 4 Copies

Fee Lease - 3 Copies

OIL CONSERVATION DIVISION

P.O. Box 2088

Santa Fe, New Mexico 87504-2088

☐ AMENDED REPORT

WELL LOCATION AND ACREAGE DEDICATION PLAT

API Number 30-015-28819	Pool Code 96238	Pool Name UNDES Corral Draw (Bone Springs)
Property Code	Property Name GAINES "28"	Well Number 5
OGRID No. 017891	Operator Name POGO PRODUCING COMPANY	Elevation 2925

Surface Location

UL or lot No. B	Section 28	Township 24 S	Range 29 E	Lot Idn	Feet from the 330	North/South line NORTH	Feet from the 1650	East/West line EAST	County EDDY
---------------------------	----------------------	-------------------------	----------------------	---------	-----------------------------	----------------------------------	------------------------------	-------------------------------	-----------------------

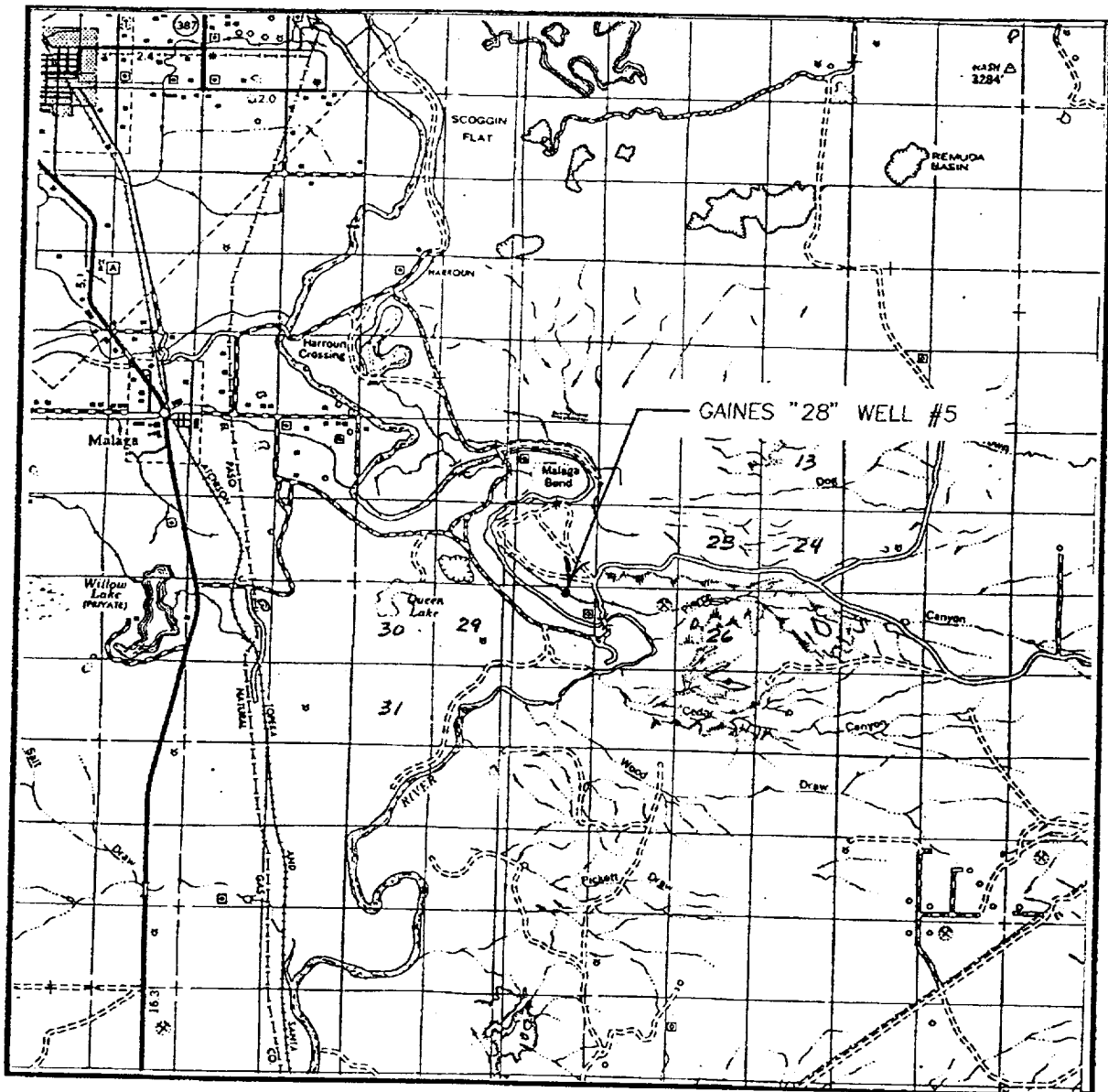
Bottom Hole Location If Different From Surface

UL or lot No.	Section	Township	Range	Lot Idn	Feet from the	North/South line	Feet from the	East/West line	County
Dedicated Acres 40	Joint or Infill	Consolidation Code	Order No.						

NO ALLOWABLE WILL BE ASSIGNED TO THIS COMPLETION UNTIL ALL INTERESTS HAVE BEEN CONSOLIDATED
OR A NON-STANDARD UNIT HAS BEEN APPROVED BY THE DIVISION

	OPERATOR CERTIFICATION	
	I hereby certify the the information contained herein is true and complete to the best of my knowledge and belief.	
	Signature <i>James M.C. Ritchie, Jr.</i>	
	Printed Name James M.C. Ritchie, Jr.	
	Title Agent	
	Date 2/06/96	
	SURVEYOR CERTIFICATION	
	I hereby certify that the well location shown on this plat was plotted from field notes of actual surveys made by me or under my supervision, and that the same is true and correct to the best of my belief.	
	Date Surveyed JAN 11 1996	
	Signature & Seal of Professional Surveyor <i>James M.C. Ritchie, Jr.</i>	
	Num. 96-0050	
	Certification WEST 676 EDDY 3239 CARRY EDSON 12641	

VICINITY MAP

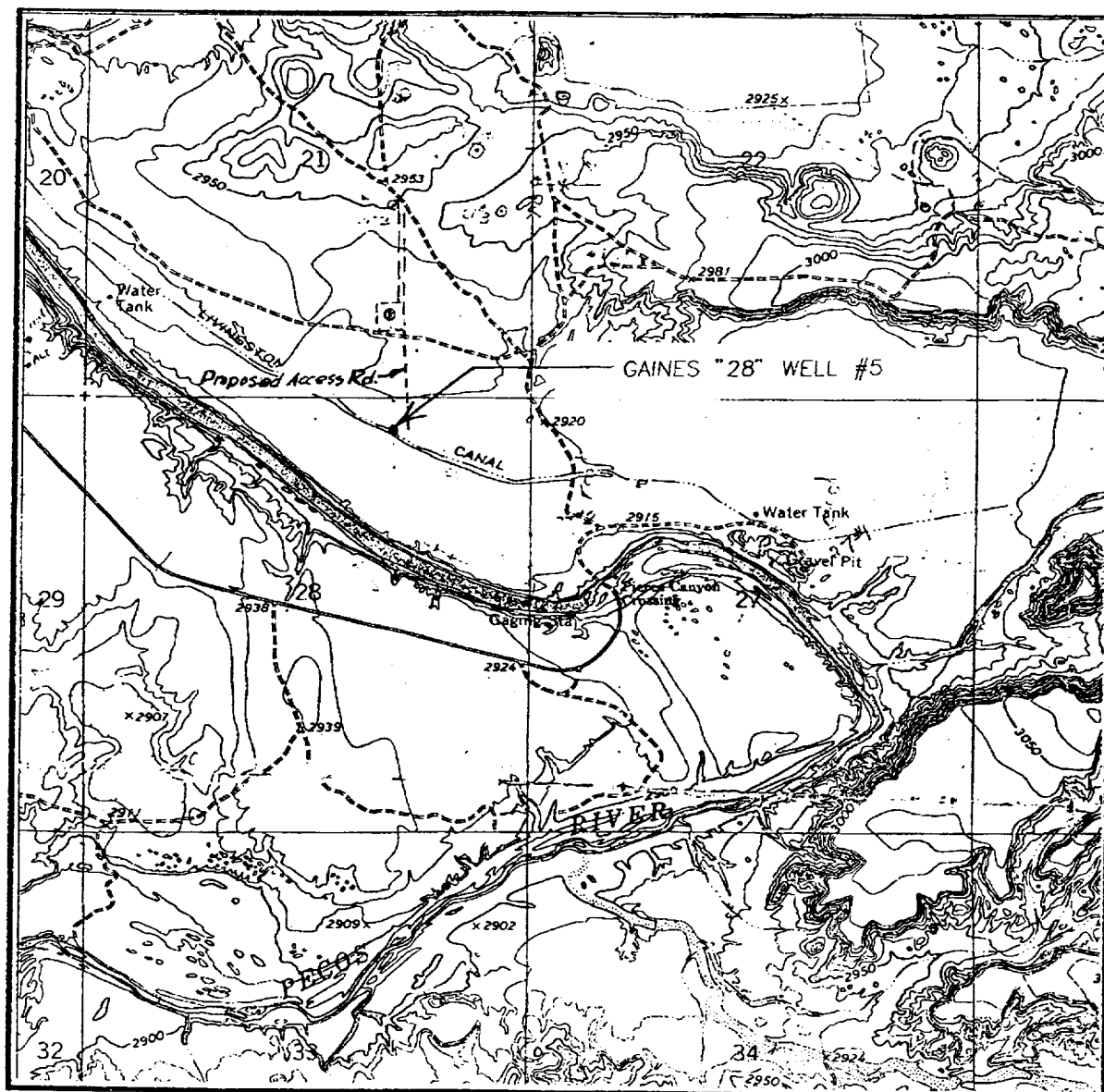


SCALE: 1" = 2 MILES

SEC. 28 TWP. 24-S RGE. 29-ESURVEY N.M.P.M.COUNTY EDDYDESCRIPTION 330' FNL & 1650' FELELEVATION 2925OPERATOR POGO PRODUCING COMPANYLEASE GAINES "28"

JOHN WEST ENGINEERING
HOBBS, NEW MEXICO
(505) 393-3117

LOCATION VERIFICATION MAP



SCALE: 1" = 2000'

CONTOUR INTERVAL - 10'

SEC. 28 TWP. 24-S RGE. 29-F

SURVEY N.M.P.M.

COUNTY EDDY

DESCRIPTION 330' FNL & 1650' FEL

ELEVATION 2925

OPERATOR POGO PRODUCING COMPANY

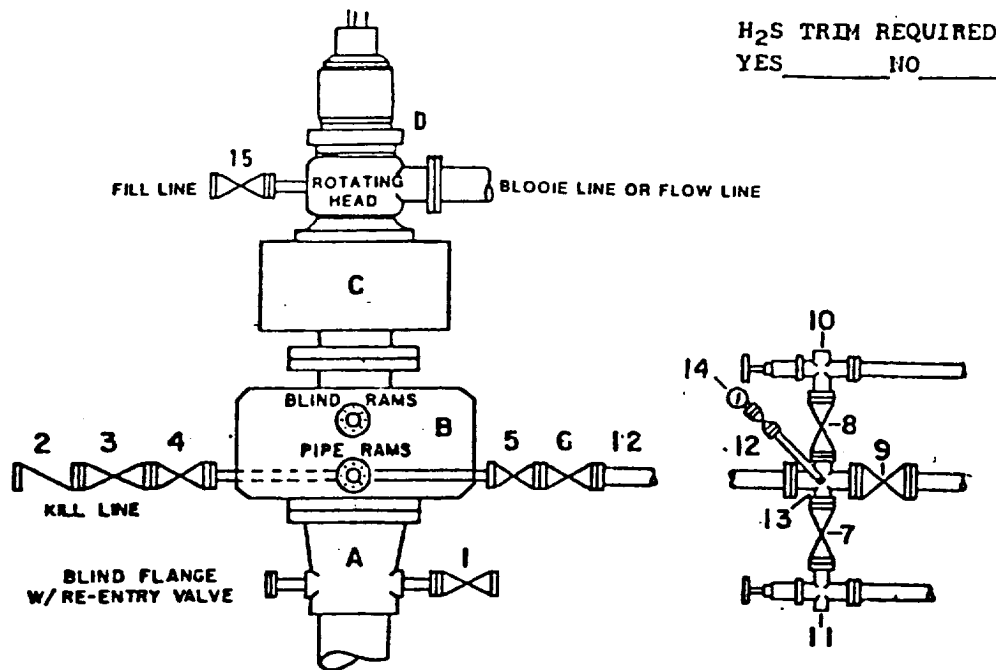
LEASE GAINES "28"

U.S.G.S. TOPOGRAPHIC MAP

PIERCE CANYON, N.M.

JOHN WEST ENGINEERING
HOBBS, NEW MEXICO
(505) 393-3117

DRILLING CONTROL **CONDITION III-B 3000 PSI WP**



H₂S TRIM REQUIRED
 YES _____ NO _____

DRILLING CONTROL

MATERIAL LIST - CONDITION III - B

- | | |
|----------------|---|
| A | Wellhead |
| B | 3000# W.P. Dual ram type preventer, hydraulic operated with 1" steel, 3000# W.P. control lines (where sub-structure height is adequate, 2 - 3000# W.P. single ram preventers may be utilized with 3000# W.P. drilling spool with 2" minimum flanged outlet for kill line and 3" minimum flanged outlet for choke line. The drilling spool is to be installed below the single ram type preventers). |
| C | 3000# W.P. Annular Preventer with 1" steel, 3000# W.P. control lines. |
| D | Rotating Head with fill up outlet and extended Bloopie line. |
| 1,3,4,
7,8, | 2" minimum 3000# W.P. flanged full opening steel gate valve, or Halliburton Lo Torc Plug valve. |
| 2 | 2" minimum 3000# W.P. back pressure valve. |
| 5,6,9 | 3" minimum 3000# W.P. flanged full opening steel gate valve, or Halliburton Lo Torc Plug valve. |
| 12 | 3" minimum Schedule 80, Grade B, seamless line pipe. |
| 13 | 2" minimum x 3" minimum 3000# W.P. flanged cross. |
| 10,11 | 2" minimum 3000# W.P. adjustable choke bodies. |
| 14 | Cameron Mud Gauge or equivalent (location optional in Choke line). |
| 15 | 2" minimum 3000# W.P. flanged or threaded full opening steel gate valve, or Halliburton Lo Torc Plug valve. |

SCALE:	DATE	EST. NO.	DRG NO.
DRAWN BY			
CHECKED BY			
APPROVED BY			

EXHIBIT E