

FIGURE K6-1. The schematic sketch of an accumulator system shows required and optional components.

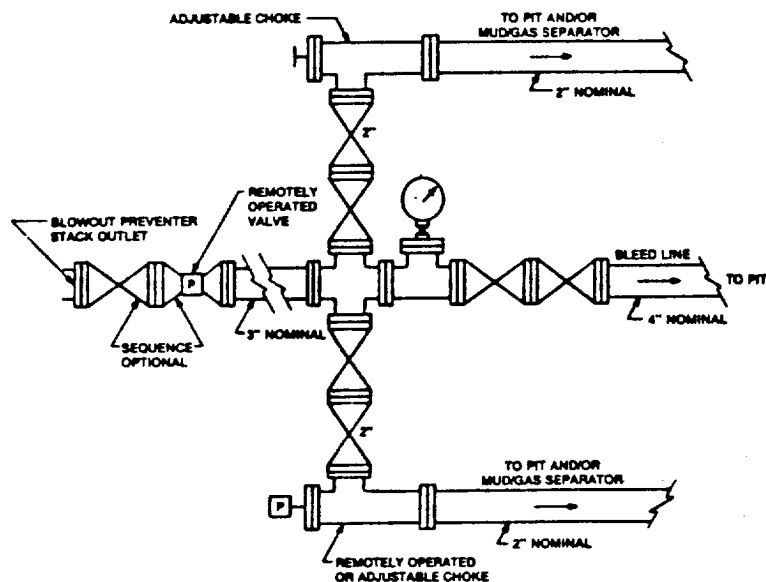


FIGURE K4-2. Typical choke manifold assembly for 5M rated working pressure service — surface installation.

EXHIBIT "E-1"
CHOKE MANIFOLD & CLOSING UNIT

MARALO INC.
GOLD RUSH "30" FEDERAL # 4
660' FEL & 1980' FSL SEC. 30
T23S-R30E EDDY CO. NM