

District I  
PO Box 1980, Hobbs, NM 88241-1980  
District II  
PO Drawer DD, Artesia, NM 88211-0719  
District III  
1000 Rio Brazos Rd., Aztec, NM 87410  
District IV  
PO Box 2088, Santa Fe, NM 87504-2088

State of New Mexico  
Energy, Minerals & Natural Resources Department

OIL CONSERVATION DIVISION  
PO Box 2088  
Santa Fe, NM 87504-2088

Form C-101  
Revised February 10, 1994  
Instructions on back  
Submit to Appropriate District Office  
AUG 05 1996 State Lease - 6 Copies  
Fee Lease - 5 Copies

OIL CON. DIV.  
AMENDED REPORT

APPLICATION FOR PERMIT TO DRILL, RE-ENTER, DEEPEN, PLUGBACK, OR ADD A ZONE

<sup>2</sup> Operator Name and Address. Devon Energy Corporation (Nevada) 1500 Mid America Tower 20 N. Broadway Oklahoma City, OK 73102-8260		<sup>1</sup> OGRID Number 6137
		<sup>3</sup> API Number 30-015- 29102
<sup>4</sup> Property Code 19396	<sup>5</sup> Property Name Todd "36B" State	<sup>6</sup> Well No. 15

<sup>7</sup> Surface Location

UL or lot no. B	Section 36	Township 23S	Range 31E	Lot Ids	Feet from the 330'	North/South line NORTH	Feet from the 2310'	East/West line EAST	County EDDY
--------------------	---------------	-----------------	--------------	---------	-----------------------	---------------------------	------------------------	------------------------	----------------

<sup>8</sup> Proposed Bottom Hole Location If Different From Surface

UL or lot no.	Section	Township	Range	Lot Ids	Feet from the	North/South line	Feet from the	East/West line	County
<sup>9</sup> Proposed Pool 1 UNDES INGLE WELLS (DELAWARE) 33745					<sup>10</sup> Proposed Pool 2				

<sup>11</sup> Work Type Code N	<sup>12</sup> Well Type Code O	<sup>13</sup> Cable/Rotary R	<sup>14</sup> Lease Type Code STATE	<sup>15</sup> Ground Level Elevation 3511'
<sup>16</sup> Multiple No	<sup>17</sup> Proposed Depth 8750'	<sup>18</sup> Formation Delaware\Bone Spring	<sup>19</sup> Contractor Not Yet Selected	<sup>20</sup> Spud Date September 12, 1996

<sup>21</sup> Proposed Casing and Cement Program

Hole Size	Casing Size	Casing weight/foot	Setting Depth	Sacks of Cement	Estimated TOC
17 1/2"	13 3/8"	48	850'	700	SURFACE
12 1/4"	8 5/8"	32	4350'	1600	SURFACE
7 7/8"	5 1/2"	15.5 & 17	8750'	1200*	300'

<sup>22</sup> Describe the proposed program. If this application is to DEEPEN or PLUG BACK give the data on the present productive zone and proposed new productive zone. Describe the blowout prevention program, if any. Use additional sheets if necessary.

Devon plans to drill this well to a total depth of 8750 feet and complete it as a Delaware development well. If it is deemed non-commercial then it will be plugged and abandoned in accordance with the rules and regulations established by the New Mexico OCD or converted to salt water disposal after installing casing and obtaining the necessary disposal permits. Blowout prevention equipment will be installed while drilling the intermediate and production holes.

\*DV tool will be positioned at approximately 5300'.

Post ID-1  
8-23-96

New Loc & API

<sup>23</sup> I hereby certify that the information given above is true and complete to the best of my knowledge and belief.		OIL CONSERVATION DIVISION	
Signature: Candace R. Graham		Approved by: ORIGINAL SIGNED BY TIM W. GUM	
Printed name: Candace R. Graham		Title: DISTRICT II SUPERVISOR	
Title: Engineer Technician		Approval Date: 8-19-96	
Date: August 2, 1996		Expiration Date: 8-19-97	
Phone: (405) 235-3611 X4515		Conditions of Approval:	
		Attached <input type="checkbox"/>	

DISTRICT I  
P. O. Box 1980  
Hobbs, NM 88241-1980

State of New Mexico  
Energy, Minerals, and Natural Resources Department

Form C-102  
Revised 02-10-94

Instructions on back

DISTRICT II  
P. O. Drawer DD  
Artesia, NM 88211-0719

OIL CONSERVATION DIVISION

P. O. Box 2088  
Santa Fe, New Mexico 87504-2088

Submit to the Appropriate  
District Office  
State Lease - 4 copies  
Fee Lease - 3 copies

☐ AMENDED REPORT

DISTRICT III  
1000 Rio Brazos Rd.  
Aztec, NM 87410

DISTRICT IV  
P. O. Box 2088  
Santa Fe, NM 87507-2088

WELL LOCATION AND ACREAGE DEDICATION PLAT

<sup>1</sup> API Number 30-015-29102	<sup>2</sup> Pool Code 33745	<sup>3</sup> Pool Name Ingle Wells (Delaware)
<sup>4</sup> Property Code	<sup>5</sup> Property Name TODD "36"-FEDERAL "36B" State	<sup>6</sup> Well Number 15
<sup>7</sup> OGRID No. 6137	<sup>8</sup> Operator Name DEVON ENERGY CORPORATION (Nevada)	<sup>9</sup> Elevation 3511'

" SURFACE LOCATION

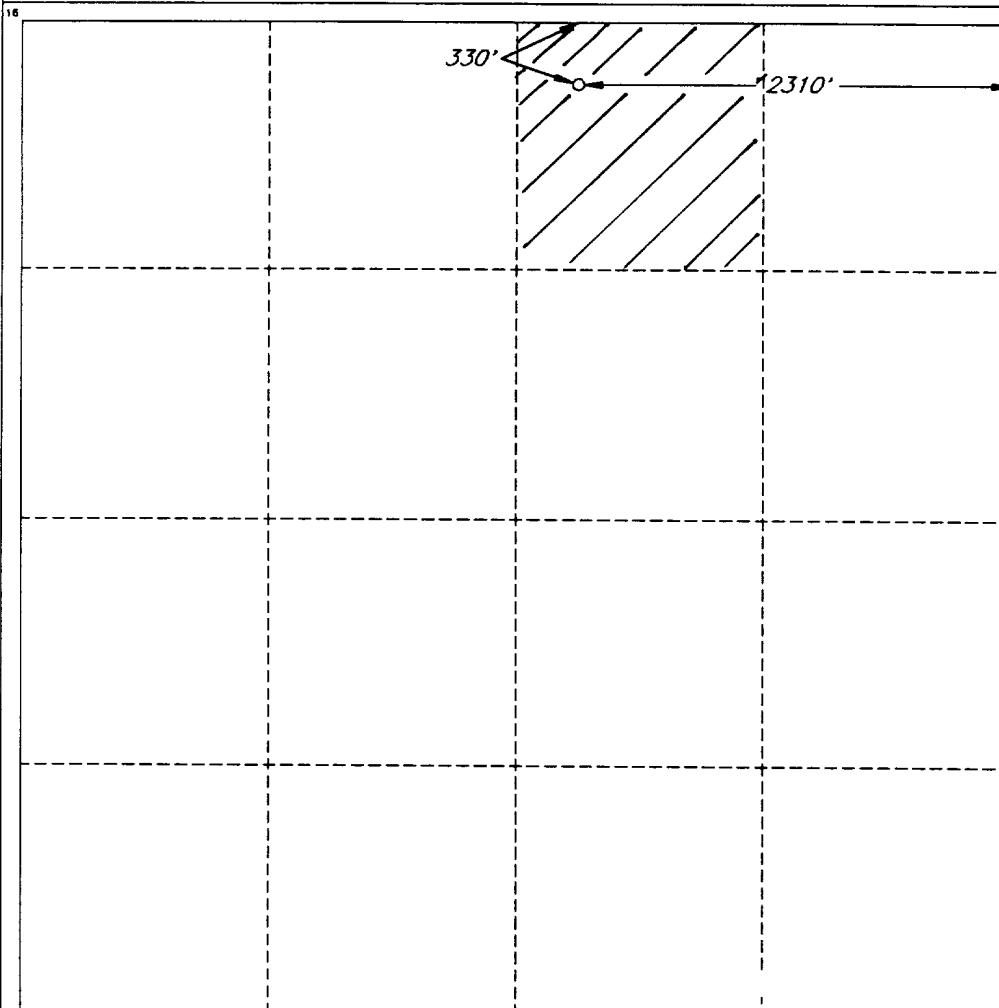
UL or lot no.	Section	Township	Range	Lot Ida	Feet from the	North/South line	Feet from the	East/West line	County
B	36	23 SOUTH	31 EAST, N.M.P.M.		330'	NORTH	2310'	EAST	EDDY

" BOTTOM HOLE LOCATION IF DIFFERENT FROM SURFACE

UL or lot no.	Section	Township	Range	Lot Ida	Feet from the	North/South line	Feet from the	East/West line	County

<sup>12</sup> Dedicated Acres 40	<sup>13</sup> Joint or Infill	<sup>14</sup> Consolidation Code	<sup>15</sup> Order No.
-------------------------------------	-------------------------------	----------------------------------	-------------------------

NO ALLOWABLE WELL BE ASSIGNED TO THIS COMPLETION UNTIL ALL INTERESTS HAVE BEEN  
CONSOLIDATED OR A NON-STANDARD UNIT HAS BEEN APPROVED BY THE DIVISION



OPERATOR CERTIFICATION

I hereby certify that the information  
contained herein is true and complete  
to the best of my knowledge and belief.

Signature

Candace R. Graham

Printed Name

Candace R. Graham

Title

Engineering Tech.

Date

August 2, 1996

SURVEYOR CERTIFICATION

I hereby certify that the well  
location shown on this plat was  
plotted from field notes of actual  
surveys made by me or under  
my supervision, and that the  
same is true and correct to the  
best of my belief.

Date of Survey

JULY 28, 1996

Signature and Seal of  
Professional Surveyor

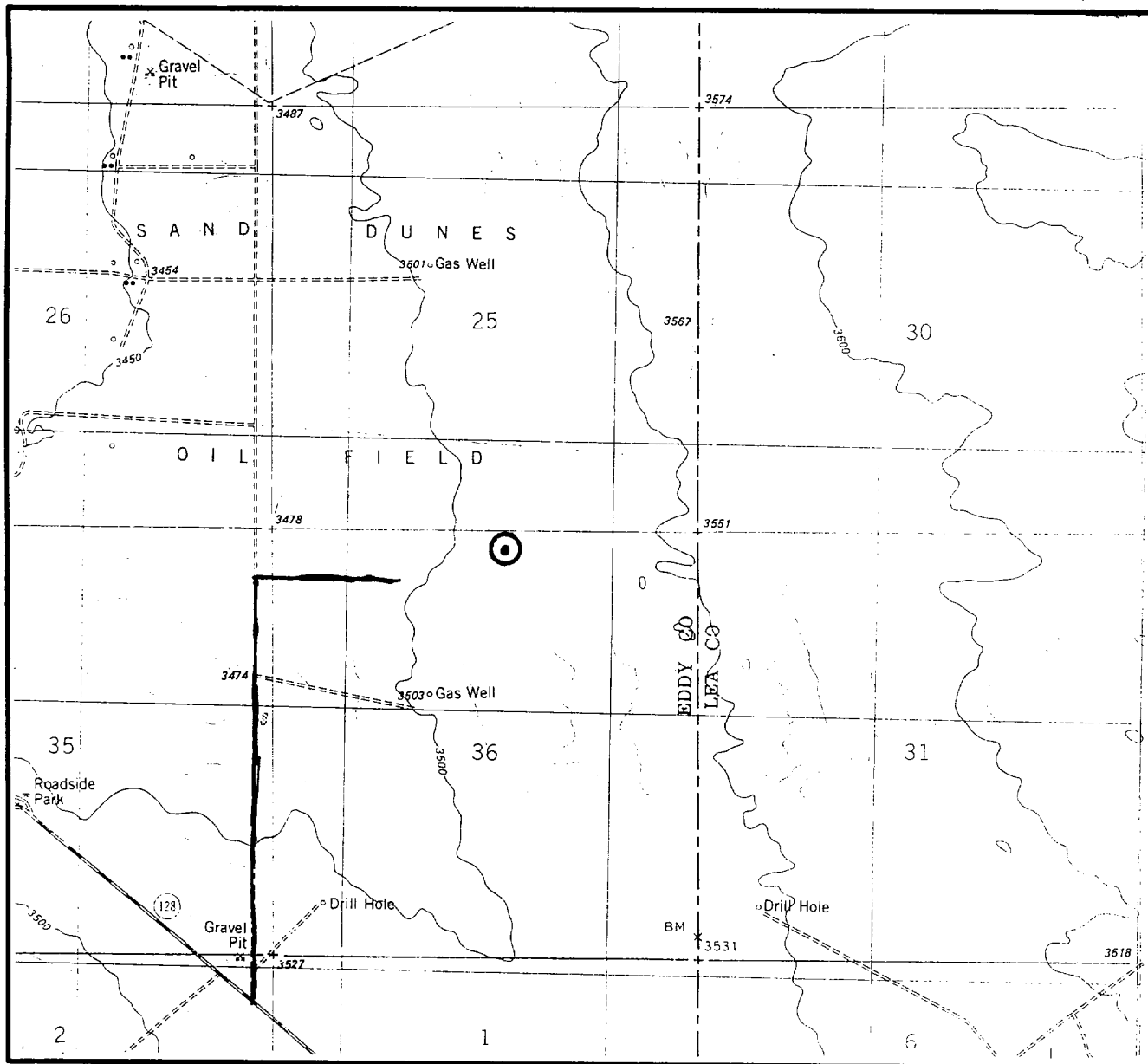
V. LYNN  
BEZNER  
NO. 7920

Certification No.

V. L. BEZNER, P.S. #7920

JOB #46648 / SW / V.H.B.

# LOCATION & ELEVATION VERIFICATION MAP



SCALE : 1" = 2000'

CONTOUR INTERVAL 10'

SECTION 36 TWP 23-S RGE 31-E  
SURVEY NEW MEXICO PRINCIPAL MERIDIAN  
COUNTY EDDY STATE NM  
DESCRIPTION 330' FNL & 2310' FEL  
ELEVATION 3511'

OPERATOR DEVON ENERGY CORPORATION  
LEASE TODD "36" FEDERAL #15

U.S.G.S. TOPOGRAPHIC MAP  
BOOTLEG RIDGE, NEW MEXICO

SCALED LAT. N 32°16'03"  
LONG. W 103°43'49"



This location has been very carefully staked on the ground according to the best official survey records, maps, and other data available to us.  
Review this plat and notify us immediately of any possible discrepancy.

## TOPOGRAPHIC LAND SURVEYORS

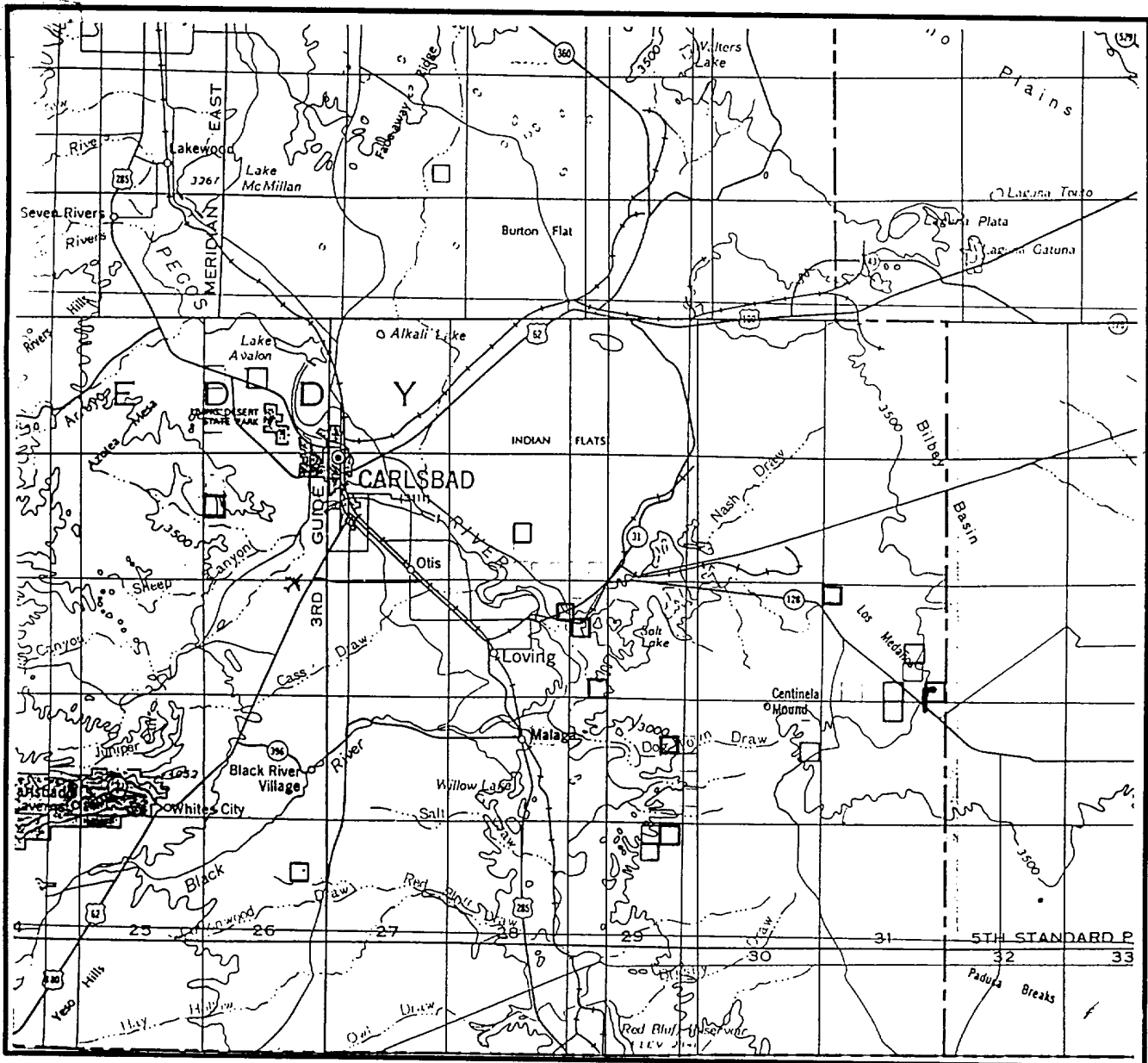
*Surveying & Mapping for the Oil & Gas Industry*

1307 N. HOBART  
PAMPA, TX. 79065  
(800) 658-6382

6709 N. CLASSEN BLVD.  
OKLAHOMA CITY, OK. 73116  
(800) 654-3219

2903 N. BIG SPRING  
MIDLAND, TX. 79705  
(800) 767-1653

# VICINITY MAP



SECTION 36 TWP 23-S RGE 31-E  
 SURVEY NEW MEXICO PRINCIPAL MERIDIAN  
 COUNTY EDDY STATE NM  
 DESCRIPTION 330' FNL & 2310' FEL

OPERATOR DEVON ENERGY CORPORATION  
 LEASE TODD "36" FEDERAL #15

DISTANCE & DIRECTION FROM THE JCT. OF STATE HWY.  
128 & PAVED COUNTY ROAD #298, ±35' MILES WEST  
OF JAL, GO NORTH 0.9 MILE ON COUNTY ROAD #798,  
THENCE EASTERLY 0.3 MILE ON LEASE ROAD TO WELL  
"36" #7 AND A POINT ±1200' SOUTHWEST OF  
THE LOCATION.



This location has been very carefully staked on the ground according to the best official survey records, maps, and other data available to us.  
 Review this plat and notify us immediately of any possible discrepancy.

## TOPOGRAPHIC LAND SURVEYORS

*Surveying & Mapping for the Oil & Gas Industry*

1307 N. HOBART  
 PAMPA, TX. 79065  
 (800) 658-6382

6709 N. CLASSEN BLVD.  
 OKLAHOMA CITY, OK. 73116  
 (800) 654-3219

2903 N. BIG SPRING  
 MIDLAND, TX. 79705  
 (800) 767-1653

26 25 25 30  
FND. BRASS CAP (TYPICAL) 35 36 36 31  
S 89°58' E, 2638.5'  
330'  
2310'  
S 69°30' W 997'  
PROPOSED LEASE ROAD  
DEVON ENERGY CORPORATION  
TODD #36 FEDERAL #15  
GROUND ELEVATION : 3511'  
FND. 1/2" I.R.  
S 00°01' W, 2638.5'  
S 00°00' W, 2639.2'  
36 31 36 31  
2 1 S 89°45' E, 2671.8' T-23-S T-24-S 1 6  
R-31-E R-32-E

PLAN VIEW  
1" = 1000'

400'  
3511' 3517'  
200'  
200'  
PROPOSED WELL LOCATION  
ELEV. : 3511'  
400'  
117'  
3507' 3512'  
400'  
PROPOSED LEASE ROAD

DETAIL VIEW  
1" = 100'

				<b>DEVON ENERGY CORPORATION</b> MIDLAND, TEXAS	SCALE: AS SHOWN
					DATE: JULY 26, 1996
NO.	REVISION	DATE	BY		JOB NO.: 46648-F
SURVEYED BY: R.R.				SURVEYING AND MAPPING BY <b>TOPOGRAPHIC LAND SURVEYORS</b> MIDLAND, TEXAS	47 SW SHEET : 1 OF 1
DRAWN BY: V.H.B.					
APPROVED BY: V.L.B.					

## STATE OF NEW MEXICO

## ENERGY, MINERALS AND NATURAL RESOURCES DEPARTMENT

GARY E. JOHNSON  
GOVERNOROIL CONSERVATION DIVISION  
ARTESIA DISTRICT OFFICEAUG 16 1996  
JENNIFER SALISBURY

CABINET SECRETARY

DATE 8 / 9 / 96Bureau of Land Management  
620 E. Greene St.  
Carlsbad, N.M. 88220-6292State Land Office  
P. O. Box 1148  
Santa Fe, N.M. 87405

Attn: Craig Cranston

Attn: Joe Mraz/Larry Kehoe

Re: APPLICATION FOR PERMIT TO DRILL IN POTASH AREA

OPERATOR Devon Energy Corp.LEASE NAME Todd "36B" State #15LOCATION: SEC. 36 TWP. 23 RGE. 31  
FOOTAGE 330' FNL / 2310' FBLPROPOSED DEPTH 8750

Gentleman:

The application for permit to drill identified above has been filed with this office of the New Mexico Oil Conservation Division. Pursuant to the provisions of Oil Conservation Division Order R-111-P, please advise this office whether or not this location is within an established Life-of-Mine-Reserve area filed with and approved by your office. If not, please advise whether it is within the buffer zone established by the order.

Thank you for your assistance.

Sincerely,

  
Bryan G. Arrant  
District Geologist, District IIIN LMR YES ☐  
IN BUFFER ZONE YES ☐NO ☒  
NO ☒JR. MRAZ  
13 Aug. 96

COMMENTS:

this tract is outside the R-111-P  
Area!

SIGNATURE \_\_\_\_\_

DATE \_\_\_\_\_

811 S. First St.

ARTESIA, NEW MEXICO 88210-2834

505-748-1283

Signature Larry Kehoe  
Oil, Gas and Minerals Division  
Date August 13, 1996

## STATE OF NEW MEXICO

## ENERGY, MINERALS AND NATURAL RESOURCES DEPARTMENT

GARY E. JOHNSON  
GOVERNOROIL CONSERVATION DIVISION  
ARTESIA DISTRICT OFFICEJENNIFER SALISBI  
CABINET SECRETARYDATE 8 / 9 / 96Bureau of Land Management  
620 E. Greene St.  
Carlsbad, N.M. 88220-6292State Land Office  
P. O. Box 1148  
Santa Fe, N.M. 87405

Attn: Craig Cranston

Attn: Joe Mraz/Larry Kehoe

Re: APPLICATION FOR PERMIT TO DRILL IN POTASH AREA

OPERATOR Devon Energy Corp.LEASE NAME Todd "36B" State #15LOCATION: SEC. 36 TWP. 23 RGE. 31  
FOOTAGE 330' ENL / 2310' EELPROPOSED DEPTH 8750

Gentleman:

The application for permit to drill identified above has been filed with this office of the New Mexico Oil Conservation Division. Pursuant to the provisions of Oil Conservation Division Order R-111-P, please advise this office whether or not this location is within an established Life-of-Mine-Reserve area filed with and approved by your office. If not, please advise whether it is within the buffer zone established by the order.

Thank you for your assistance.

Sincerely,

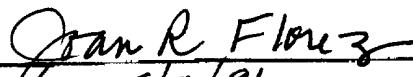
  
Bryan G. Arrant  
District Geologist, District IIIN LMR YES \_\_\_\_\_  
IN BUFFER ZONE YES \_\_\_\_\_NO ☒  
NO ☒

COMMENTS:

\* outside KPLA

SIGNATURE

DATE

  
8/9/96

811 S. First St.

ARTESIA, NEW MEXICO 88210-2834

505-748-1283

AUG 12 1996

OIL CON. DIV.