

Form 3180-3
(December 1990)

OIL CONSERVATION DIV
811 S. 1st ST.
ALBUQUERQUE, NM 88210-2834
UNITED STATES
DEPARTMENT OF THE INTERIOR
BUREAU OF LAND MANAGEMENT

FORM APPROVED
Budget Bureau No. 1004-0136
Expires: December 31, 1991

SUBMIT IN TRIPLICATE

01 OCT 25 1995
MAY 22 1995

1. Type of Work **DRILL** ☒ **DEEPEN** ☐
1b. Type of Well
OIL WELL ☒ GAS WELL ☐ OTHER ☐
2. Name of Operator **TEXACO EXPLORATION & PRODUCTION INC.**
3. Address and Telephone No. **P.O. Box 3109, Midland Texas 79702 688-4606**
4. Location of Well (Report location clearly and in accordance with any State requirements.)
At Surface
Unit Letter I : 1980 Feet From The SOUTH Line and 990 Feet From The EAST Line
At proposed prod. zone
SAME
14. Distance in Miles and Direction from Nearest Town or Post Office*
32 MILES NORTHEAST OF CARLSBAD, NM
15. Distance From Proposed* Location to Nearest Property or Lease Line, Ft. (also to nearest drlg. unit line, if any) 990'
16. No. of Acres in Lease 640
17. No. of Acres Assigned To This Well 40
18. Distance From Proposed Location* to Nearest Well, Drilling, Completed or Applied For, On This Lease, Ft. 990'
19. Proposed Depth 8550'
20. Rotary or Cable Tools
ROTARY
21. Elevations (Show whether DF, RT, GR, etc.)
GR-3595 Secretary's Potash
22. Approx. Date Work Will Start*
7/1/96

5. Lease Designation and Serial No.
NM 29233
6. If Indian, Allottee or Tribe Name
7. If Land or CA, Agreement Designation
8. Well Name and Number
NEFF '13' FEDERAL
9. API Well No.
30-015-29247
10. Field and Pool, Exploratory Area
LIVINGSTON RIDGE - DELAWARE
11. SEC., T., R., M., or BLK. and Survey or Area
Sec. 13, Township 22-S, Range 31-E
12. County or Parish
EDDY
13. State
NM

23. PROPOSED CASING AND CEMENT PROGRAM				
SIZE OF HOLE	GRADE, SIZE OF CASING	WEIGHT PER FOOT	SETTING DEPTH	QUANTITY OF CEMENT
14 3/4	WC50, 11 3/4	42#	800'	500 SACKS - CIRCULATE
11	WC50, J55, 8 5/8	32#	4400'	1050 SACKS - CIRCULATE
7 7/8	WC50, WC70, S95, 5 1/2	17#	8550'	1500 SACKS - CIRCULATE

CEMENTING PROGRAM:

SURFACE CASING - 500 SACKS CLASS C W/ 2% CACL2 (14.8 PPG, 1.34 CF/S, 6.3 GW/S).

INTERMEDIATE CASING - 900 SACKS 35/65 POZ CLASS H W/ 6% GEL, 5% SALT, 1/4# FLOCELE (12.4 PPG, 2.14 CF/S, 11.9 GW/S). F/B 150 SACKS CLASS H (15.6 PPG, 1.18 CF/S, 5.2 GW/S).

PRODUCTION CASING - 1st STG: 800 SACKS 50/50 POZ H w/ 2% GEL, 5% SALT, 1/4# FC (14.2 PPG, 1.35 CF/S, 6.3 GW/S).
DV TOOL @ 5500' - 2nd STG: 600 SACKS 35/65 POZ CLASS H W/ 6% GEL, 5% SALT, 1/4# FLOCELE (12.4 PPG, 2.14 CF/S, 11.9 GW/S). F/B 100 SACKS CLASS H (15.6 PPG, 1.18 CF/S, 5.2 GW/S)

DAYS TO DRILL: 15 DAYS. DAYS TO COMPLETE: 14 DAYS.

THERE ARE NO OTHER OPERATORS IN THIS QUARTER QUARTER SECTION.

In Above Space Describe Proposed Program: If proposal is to deepen, give data on present productive zone and proposed new productive zone. If proposal is to drill or deepen directionally, give pertinent data on subsurface locations and measured true verticle depths. Give blowout preventer program, if any.

24. I hereby certify that the foregoing is true and correct

SIGNATURE C. Wade Howard TITLE Eng. Assistant DATE 5/21/96
TYPE OR PRINT NAME C. Wade Howard

(This space for Federal or State office use)

PERMIT NO. _____ APPROVAL DATE _____
Application approval does not warrant or certify that the applicant holds legal or equitable title to those rights in the subject lease which would entitle the applicant to conduct operations thereon.
APPROVED BY Gilbert J. Lucero TITLE Acting State Director DATE 10-9-96
CONDITIONS OF APPROVAL, IF ANY:

Title 18 U.S.C. Section 1001, makes it a crime for any person knowingly and willfully to make to any department or agency of the United States any false, fictitious or fraudulent statements or representations as to any matter within its jurisdiction.

DISTRICT I
P. O. Box 1980, Hobbs, NM 88240

DISTRICT II
P. O. Drawer DD, Artesia, NM 88210

DISTRICT III
1000 Rio Brazos Rd., Aztec, NM 87410

DISTRICT IV
P. O. Box 2088, Santa Fe, NM 87504-2088

State of New Mexico
Energy, Minerals and Natural Resources Department

OIL CONSERVATION DIVISION

PO Box 2088
Santa Fe, NM 87504-2088

Form C-102
Revised February 10, 1994

Instructions on back

Submit to Appropriate District Office

State Lease-4 copies
Fee Lease-3 copies

☐ AMENDED REPORT

WELL LOCATION AND ACREAGE DEDICATION PLAT

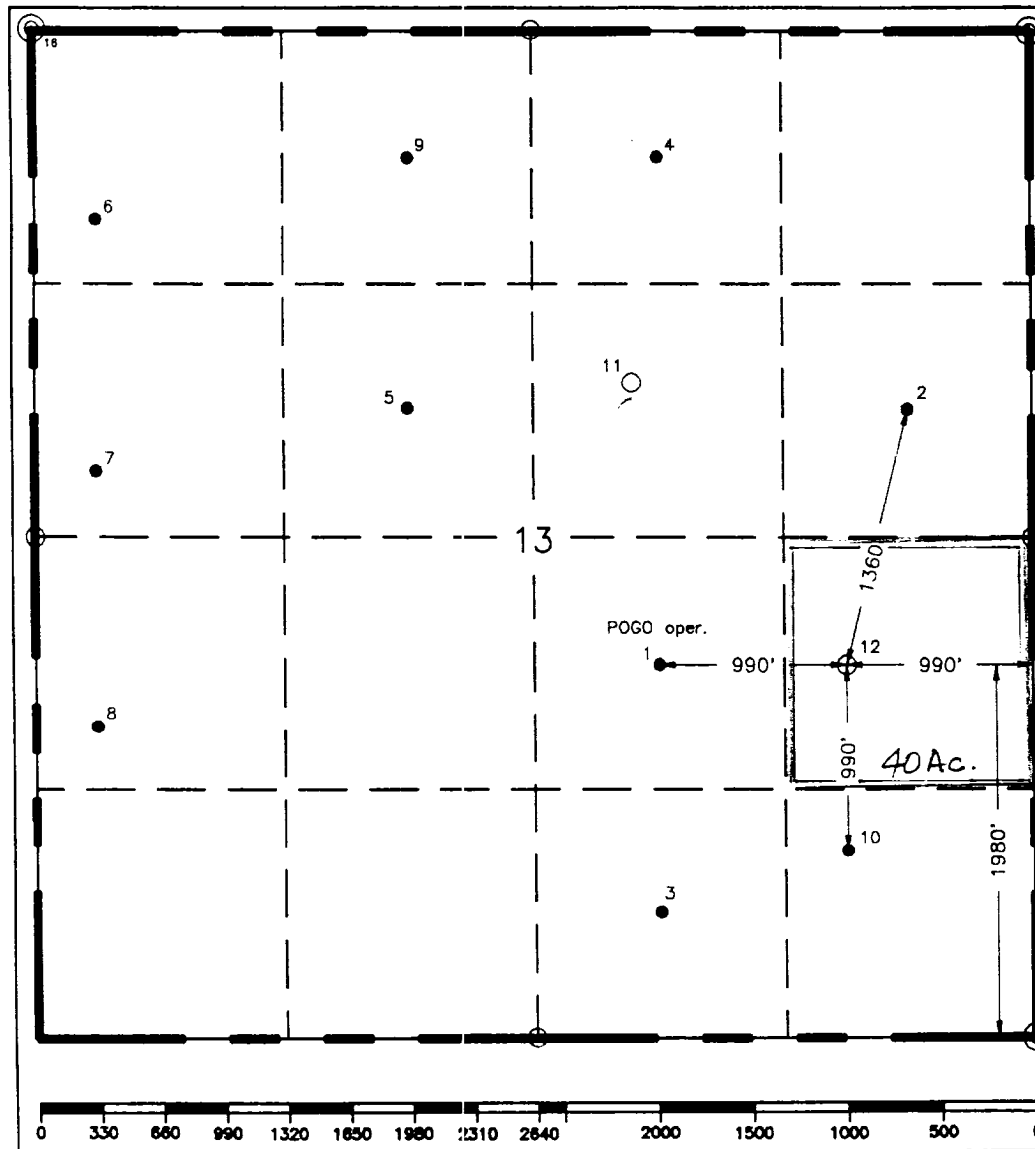
¹ API Number		² Pool Code 39360		³ Pool Name Livingston Ridge-Delaware	
⁴ Property Code 11008		⁵ Property Name Neff "13" FEDERAL			⁶ Well Number 12
⁷ GRID No. 22351		⁸ Operator Name TEXACO EXPLORATION & PRODUCTION, INC.			⁹ Elevation 3595'

¹⁰ Surface Location									
UL or lot no. 1	Section 13	Township 22-S	Range 31-E	Lot Idn	Feet from the 1980'	North/South line South	Feet from the 990'	East/West line East	⁷ County Eddy

¹¹ Bottom Hole Location If Different From Surface									
UL or lot no.	Section	Township	Range	Lot Idn	Feet from the	North/South line	Feet from the	East/West line	⁷ County

¹² Dedicated Acres 40	¹³ Joint or Infill	¹⁴ Consolidation Code	¹⁵ Order No.
-------------------------------------	-------------------------------	----------------------------------	-------------------------

NO ALLOWABLE WILL BE ASSIGNED TO THIS COMPLETION UNTIL ALL INTERESTS HAVE BEEN CONSOLIDATED
OR A NON-STANDARD UNIT HAS BEEN APPROVED BY THE DIVISION.



¹⁶ OPERATOR CERTIFICATION

I hereby certify that the information contained herein is true and complete to the best of my knowledge and belief.

Signature

C. Wade Howard

Printed Name

C. Wade Howard

Position

Engineer's Assistant

Company

Texaco Expl. & Prod. Inc.

Date

May 20, 1996

¹⁷ SURVEYOR CERTIFICATION

I hereby certify that the well location shown on this plat was plotted from field notes of actual surveys made by me or under my supervision, and that the same is true and correct to the best of my knowledge and belief.

Date Surveyed

May 15, 1996

Signature & Seal of Professional Surveyor

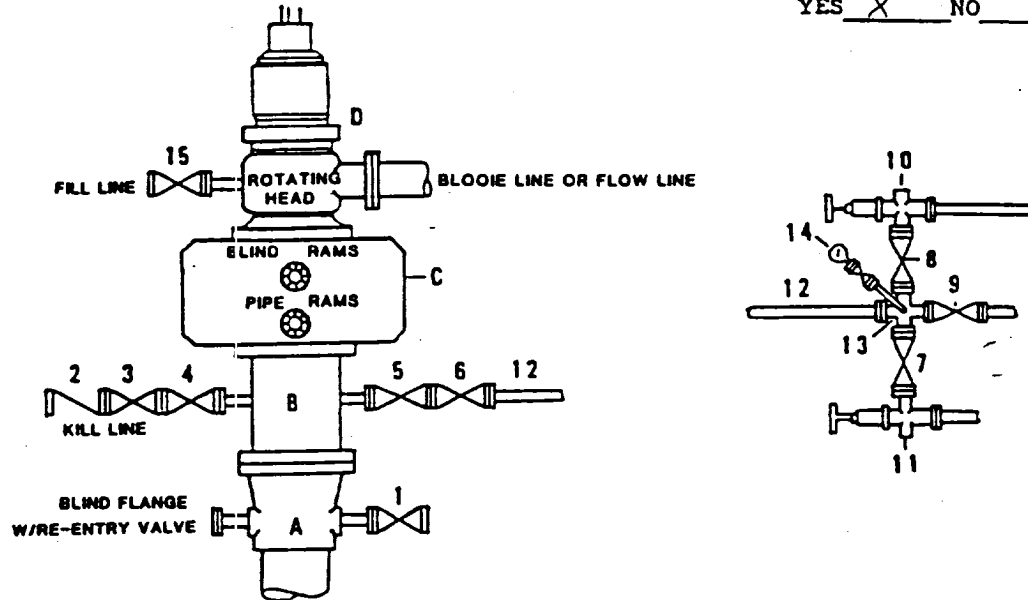
[Signature]

Certificate No.

7254 John S. Piper

**DRILLING CONTROL
CONDITION II-B 3000 WP
FOR AIR DRILLING OR
WHERE NITROGEN OR AIR BLOWS ARE EXPECTED**

H₂S TRIM REQUIRED
YES X NO



DRILLING CONTROL

MATERIAL LIST - CONDITION II - B

- | | |
|----------------|---|
| A | Texaco Wellhead |
| B | 3000# W.P. drilling spool with a 2" minimum flanged outlet for kill line and 3" minimum flanged outlet for choke line. |
| C | 3000# W.P. Dual ram type preventer, hydraulic operated with 1" steel, 3000# W.P. control lines (where sub-structure height is adequate, 2 - 3000# W.P. single ram type preventers may be utilized). |
| D | Rotating Head with fill up outlet and extended Blooie Line. |
| 1,3,4,
7,8, | 2" minimum 3000# W.P. flanged full opening steel gate valve, or Halliburton Lo Torc Plug valve. |
| 2 | 2" minimum 3000# W.P. back pressure valve. |
| 5,6,9 | 3" minimum 3000# W.P. flanged full opening steel gate valve, or Halliburton Lo Torc Plug valve. |
| 12 | 3" minimum schedule 80, Grade "B", seamless line pipe. |
| 13 | 2" minimum x 3" minimum 3000# W.P. flanged cross. |
| 10,11 | 2" minimum 3000# W.P. adjustable choke bodies. |
| 14 | Cameron Mud Gauge or equivalent (location optional in choke line). |
| 15 | 2" minimum 3000# W.P. flanged or threaded full opening steel gate valve, or Halliburton Lo Torc Plug valve. |



TEXACO, INC.
MIDLAND DIVISION
MIDLAND, TEXAS



SCALE	DATE	EST. NO.	DRG. NO.
DRAWN BY			
CHECKED BY			
APPROVED BY			

EXHIBIT C